

**Vale of White Horse Community Safety Partnership  
Strategic Intelligent Assessment  
Executive Summary**

**Introduction**

This document has been produced to inform partners on the key risks to the community safety agenda across of the Vale of White Horse area. It is intended to inform the 2008/9 annual tactical plan so that we can ensure the best use of our mainstream and financial resources.

The summary combines the key findings of the following three reports:

1. Oxfordshire strategic assessment 2007 – Created by Richard Crisp, Intelligence Analyst, Thames Valley Police, August 2007
2. Understanding Rural Oxfordshire – Community Safety – Created by Claire Young, Safer Communities Unit, Oxfordshire County Council
3. Demographic and Social Trend Analysis for the neighbourhoods of Vale of White Horse Local Police Area (LPA) - Created by Jo Durham and Andy Bartlett of Oxfordshire Basic Command Unit (BCU)

The next step is for the partnership to develop a three year annual rolling strategic plan for the period 2008 to 2011. The plan will be reviewed annually enabling the Partnership to tackle short, medium and long-term priorities. During this period, the priorities of the Partnership may change and when revising our plan annually we can reflect any new priorities that emerge.

The Partnership will publish a summary of the plan by 31 March 2008.

## Contents

Section	Page	Theme	
Section 1	3	Vale Overview	Population Issues
Section 2	7	Themes	BCS Comparator Crime:
	8		Theft of a motor vehicle
	8		Theft from a motor vehicle
	8		Vehicle interference
	8		Domestic burglary
	9		Theft of a pedal cycle
	9		Theft from a person
	9		Criminal damage
	9		Common assault non DV
	10		Common assault DV
	10		Wounding non DV
	10		Wounding DV
	10	Personal robbery	
2.2	13 -21	Neighbourhood policing	
2.3	21	Anti-social behaviour	
2.4	22	Drugs misuse	
2.5	22	Arson	
2.6	23	Road safety	
2.7	24	Domestic violence	
2.8	24	Alcohol related crime	
2.9	25	Environmental crime	
2.10	25	Priority and Prolific Offenders	
2.11	26	Management of high risk offenders	
2.12	27	Hate crime	
2.13	27	Commercial crime	
2.14	27	Fear of crime	
Section 3	28	Contact details	
3.1	29	Partnership structure	
3.2	30	Summary of priorities	

## Section 1 – Vale Overview

### 1.1 Population issues

The Vale covers an area of 224 square miles. The resident population of the Vale of White Horse District Council area, as measured in the 2001 Census, was 115,627, of which:

- 50% were male
- 50% were female
- 25.6% were under 20 years old (in England as a whole the figure was 25.1%)
- 15.4% were over 65 years old (in England as a whole the figure was 15.9%)
- The largest ethnic population group at 97.6% was white (in England as a whole the figure was 90.9%).

According to the Government's long-term population forecasts the population of the Vale of White Horse is estimated to increase by 7.4% between 2006 and 2026. This compares to 11.4% for Oxfordshire and 10.1% for England.

### 1.2 Deprivation

The index of Multiple Deprivation 2004 (IMD 2004) is based on seven separate "domains" of deprivation: income, employment, health and disability, education, skills and training, barriers to housing and services, living environment and crime.

The most recent Index of Multiple Deprivation was published in 2004. There is an Index of Multiple Deprivation for each super output area in England. Super output areas are geographical areas with a population of about 1,500 people. There are 32,482 super output areas in England and 75 in the Vale of White Horse.

<b>Super Output Area</b>	<b>England Rank (out of 32,482)</b>	<b>Vale Rank (out of 75)</b>	<b>Oxfordshire Rank (out of 404)</b>
Abingdon Caldecott 92	9,062	1	22
Abingdon Northcourt 00	16,591	2	68
Abingdon Fitzharris 97	18,517	3	79
Abingdon Caldecott 90	19,412	4	86
Abingdon Ock Meadow 03	19,499	5	89
Abingdon Abbey and Barton 87	20,216	6	100
Abingdon Caldecott 91	20,389	7	104
Faringdon and The Coxwells 18	21,025	8	115
Wantage Charlton 57	21,926	9	126
Hendreds 32	22,144	10	129

- None of the Vale's 75 super output areas are within the top 25% most deprived areas in England.
- One area of Abingdon Caldecott (92) ranks within the most deprived 30% of areas in England.
  - 36.4 % of adults in the Abingdon and Caldecott ward stated that they had no qualifications in the 2001 census (Vale average 21%, Oxford County 21.2%)
  - 26.2% of pupils achieved 5 A\*-C grade GCSEs in the Abingdon Caldecott ward (Vale average 55.8%, County 51.1%)
  - Abingdon Caldecott (92) also ranks as relatively deprived on the measures of child poverty and overall income.

### **1.3 Skills and Education**

- The proportion of adults in Abingdon Caldecott 92 who stated that they had no qualifications in the last Census survey is well above the district and county averages.
- The % of pupils achieving 5 A\*-C GCSE grades in Abingdon Caldecott ward is well below District, County and national averages.

### **1.4 Unemployment and Income**

- Vale of White Horse DC area has a lower than average unemployment rate with 1.62% compared to 3.35% for England and Wales.
- The greatest proportion of lone parent families resides in South Abingdon, the Abingdon Caldecott 92 ward.

## 1.5 Health

The Vale of White Horse Health Profile 2007 notes that 6,000 residents are dependent on means tested benefits and around 1,900 (8%) of children live in low income households from a total child population of 23,788.

Data from the Health Profiles for Oxfordshire for 2007 and other available information highlights the following local priorities and differences across the county:

	<b>Vale</b>	<b>Cherwell</b>	<b>South Oxon</b>	<b>West Oxon</b>	<b>Oxford City</b>
<b>Smoking</b>	170 deaths a year	170 deaths a year	170 deaths a year	130 deaths a year	175 deaths a year
<b>Diabetes</b>	At least 3,600 people have diabetes (3.1%)	At least 4,200 people have diabetes (3.1%)	At least 3,700 people have diabetes (2.9%)	At least 3,000 people have diabetes (3.1%)	At least 4,300 people have diabetes (2.9%)
<b>Obesity</b>	It is estimated that 1 in 5 adults are obese	It is estimated that 1 in 5 adults are obese	It is estimated that 1 in 5 adults are obese	It is estimated that 1 in 5 adults are obese	It is estimated that 1 in 5 adults are obese
<b>Activity</b> (% of respondents in Healthy Lifestyle Survey 2005)	Only 25% participated in at least 30 minutes of moderate intensity activity 3 times a week	Only 24% participated in at least 30 minutes of moderate intensity activity 3 times a week	Only 22.3% participated in at least 30 minutes of moderate intensity activity 3 times a week.	Only 25.7% participated in at least 30 minutes of moderate intensity activity 3 times a week	Only 20.5% participated in at least 30 minutes of moderate intensity activity 3 times a week
<b>Older People</b> (estimated from 2004 – 2029)	145% increase in number of people over 85	150% increase in number of people over 85	123% increase in number of people over 85	147% increase in number of people over 85	69.6% increase in number of people over 85
<b>Binge drinkers</b>	Approximately 14% of the population are binge drinkers	Approximately 15% of the population are binge drinkers	Approximately 14% of the population are binge drinkers	Approximately 14% of the population are binge drinkers	Approximately 23% of the population are binge drinkers
<b>Teenage Pregnancy</b>	Total of 173 conceptions in a population of 3,512 girls aged 15-17 from 2002- (26.6 per 1,000)	Total of 290 conceptions in a population of 7,477 girls aged 15-17 from 2002-04, (38.8 per 1,000)	Total of 157 conceptions in a population of 6,512 girls aged 15-17 from 2002-04 (24.1 per 1,000)	Total of 142 conceptions in a population of 4,926 girls aged 15-17 from 2002-04 (28.8 per 1,000)	Total of 367 conceptions in a population of 6,825 girls aged 15-17 from 2002-04 (53.8 per 1,000)

(Source: [www.communityhealthprofiles.info](http://www.communityhealthprofiles.info))

## **1.6 Ethnicity**

97.6% of residents living in the Vale described themselves as belonging to a 'White Ethnic Group' in the last Census. This is slightly higher than the National average for England and Wales (91.3%).

## **1.7 Housing**

The majority of properties situated in the Vale are owned; 74% of properties in this District are owned either outright, or through a shared ownership scheme, or with the help of a mortgage or loan. This is slightly higher than the 68% of properties which are owned in England as a whole.

For more information on a variety of demographic and social issues, please visit the Oxfordshire Data Observatory Web Pages, or contact them using the phone number or e-mail address below. There is a wealth of information available, on themes such as travel, education, health, housing and community life. There are also more detailed profiles on settlements and towns in the Vale.

On-line: <http://www.oxfordshireobservatory.info/wps/portal/dataobservatory>

Telephone: 01865 815483

E-mail: [oxfordshire2020@oxfordshire.gov.uk](mailto:oxfordshire2020@oxfordshire.gov.uk)

## 2.1 British Crime Survey (BCS) Comparator Crime Overall

As at 31 March 2007 the Vale was on target and showing an overall reduction of -6.9% for BCS comparator Crime. (The overall target to achieve a 10.1% reduction on baseline by 31 March 2008). At the time of writing BCS crime is showing a strong reduction against the baseline 2003/04 of -22.2 % with the trend still showing towards a decrease.

The Abingdon police sector still accounts for the majority of reported crime and crime related incidents. Within Abingdon the areas that generate the most offence reports are the town centre, Caldecott and Northcourt/Fitzharris (in that order). Criminal damage and low level violent crime are numerically the biggest problem.

Different crime categories generate peaks at different times of the year. Criminal damage is at its most challenging throughout the autumn and early winter months with a visible start point in advance of Halloween.

Violent crime is pretty consistent in occurrence but shows peaks during the summer period and around public holidays possibly due to a short term rise in alcohol consumption.

Criminal damage accounts for 45.8 % of all BCS crime. This said, the last six months has seen the first period of sustained reduction. This is mainly due to a series of proactive measures employed by the police including the appointment of a full-time Criminal Damage Co-ordinator. The reduction rate currently sits at -8.2% against the baseline 2003/04.

The very large rise in common assault in both the domestic violence and non-domestic violence categories was, in part, due to a change in the legislation that allowed for a more robust arrest policy. This has encouraged reporting in both areas.

The Vale Local Police Area (LPA) is split into two sectors: Abingdon and Wantage/Faringdon.

<b>All Crime</b>				
<b>Sectors</b>	<b>2003-4</b>	<b>2006-7</b>	<b>Actual Change</b>	<b>% Change</b>
<b>Abingdon</b>	2482	2250	-232	-9.3%
<b>Wantage and Faringdon</b>	1346	1418	+72	5.3%

The rise in crime in the Wantage and Faringdon sector is attributable to Wantage town centre which has risen from 116 crimes in 2003/4 to 193 in 2006/7 which equates to 77 crimes.

## Theft of a motor vehicle

Currently the Vale is showing a very strong reduction in offending for this area. There is a dedicated Auto crime police officer within the Priority Crime Team (PCT) at Abingdon police station, who investigates offending and identifies hotspots and series. His role has been instrumental in achieving a reduction against baseline 2003/04 of -61.9% with a change against 2006/07 of -39.8%.

There have been few sustained areas of hotspot activity and when this has occurred, it has related to the presence of prolific car thieves moving into the area, rather than a situational issue.

## Theft from a motor vehicle

Mirroring advancements in the previous category, theft from motor vehicle is also showing great strides in terms of overall reduction. The reduction against baseline 2003/04 is currently -59.8% with a change against 2006/07 of -32.4%.

The main hotspot areas are still the “beauty spots”, particularly through the summer months. Travelling criminals are the main cause of this with generally little in the way of problems from local criminals. There are also sporadic hotspots in Abingdon and Wantage frequently related to arrival of new individuals into the area, often as a result of housing moves.

There has been some excellent pro-active work in this category. With the aid of Crime and Disorder Reduction Partnership (CDRP) funds, a purchased “dummy laptop” was stolen and subsequently led to the identification and arrest of a professional gang from Hertfordshire and London. This work was driven by the Priority Crime Team.

## Vehicle interference

In line with previous two categories Vehicle Interference is also showing a reduction of -57.1% against the 2003/4 baseline and -60.9% against 2006/7. The offences that constitute this category are wide and varied (anything from removing dust caps to tampering with locks). Patterns of offending are rare. There have been no notable hotspots over the last 12 months.

## Domestic burglary

Currently the Vale is performing very well police Priority Crime Team at Abingdon taking responsibility for performance. Performance against the baseline 2003/04 shows a large reduction of -49.7%. This is the best in the Thames Valley Police area. Against 2006/07 the reduction is -36.6%. With offending rates so low it is often difficult to identify patterns and series. It does however have the advantage of highlighting any raised activity early. The only series of note in the last 12 months involved a group of offenders from Wiltshire who were targeting isolated properties. They were arrested and charged.

## **Theft of a pedal cycle**

Currently the Vale is **on target showing a -49.7% reduction** on the 2003/4 baseline. The change against 2006/07 is -30.8 %. Overall this offence is well managed and many offences are opportunistic. The main areas of offending are Abingdon and Wantage towns. There has been some recent intelligence to say that some individuals are stealing on a larger scale but the numbers are still low. Traditionally cycle theft has not been at the forefront of policing activity but as cycle values rise the focus has changed to a more proactive approach.

## **Theft from a person**

This category involves low numbers but is **behind target showing a +21.4% increase** on baseline. The trend is reversing however with a reduction of -15.0% against 2006/07. No well known hotspots exist however, these offences, which include theft from handbags, tend to be more prevalent in the town centres. As Neighbourhood Policing visibility increases in Abingdon it is anticipated that offending may fall.

## **Criminal damage**

Criminal damage is one of the main policing challenges for the Vale. It is reported in large numbers and is often very indiscriminate in nature, rarely manifests forensic opportunities and is rarely witnessed. Until 2006 it was not seen as a policing priority.

The Local Police Area Commander has now sanctioned the consolidation of a previously temporary Criminal Damage Co-ordinator role within the Priority Crime Team. This has been based on the fact that since its initiation, there has been the first period of sustained reduction. **Currently, performance against the 2003/4 baseline is showing a reduction of -8.2 %** and a -4.9 reduction against 2006/07.

Main hotspot areas are Abingdon town centre as well as parts of both North and South Abingdon. Wantage, Faringdon and individual villages have had sporadic problems. The cause is frequently linked with excessive alcohol consumption and the core age for offenders is mid to late teens.

A number of high profile uniform policing initiatives under the banner of Operation Metal have aided in the reduction and gone some way in amplifying the message of intolerance towards this type of crime.

## **Common assault non domestic violence (DV)**

A slightly mixed picture though the overall trend appears to be downward. The figures show **a current slight increase on the 2003/4 baseline of +4.1%** but the change against 2006/07 is a decrease of -21.6%.

2006/7 saw a huge increase in recorded offences. Some of this was due to a change in the law that allowed Police officers to arrest for the offence. This had the effect of allowing for the proper recording of the specific offences which were previously masked within other violent crime categories.

Offending is evident across the Vale but spikes around weekends in the towns and built-up areas commensurate with increased alcohol consumption. The consolidation of Nightsafe not only in Abingdon but in Wantage and Faringdon is beginning to show a positive effect.

Specific high visibility policing between Thursday and Saturday each week is now a permanent feature.

### **Common assault - domestic violence (DV)**

There has been a doubling of reported offences for the year to date against **the baseline year 2003/04 with a change at +95.5%**. Against 2006/07 the figure is +10.3%. The reduction in performance is viewed as positive because we have encouraged greater reporting within this crime category and seen as advancement.

Police processes are now significantly more robust than in previous years. The arrest rate for DV offenders on this police area is consistently one of the highest in Thames Valley at more than 80%. There is also a dedicated Domestic Violence Unit which ensures a thorough approach to each case referred.

### **Wounding-non domestic violence (DV)**

**The Vale is currently close to its target and stands at +2.2% against the baseline 2003/04.** Against 2006/07 there is a very slight rise that equates to +2.8%.

Like Common assault (non DV), offending is evident throughout the Vale. Again the policing patrol strategy (Operation Maximus) and the Nightsafe initiative have been used to counter the night-time economy issues. Both have had a positive effect. Whereas other police areas are seeing significant rises, the offending here is apparently remaining stable. A local strategy is the effective use of Fixed Penalty Notices at an early stage, which acts as a crime reduction measure.

### **Wounding - domestic violence**

Serious domestic violent crime is **showing a rise against the 2003/4 baseline of +52.9 %**. For the same reasons mentioned in the section on Common Assault this is seen as being very positive. Against 2006/07 figures there is currently no change.

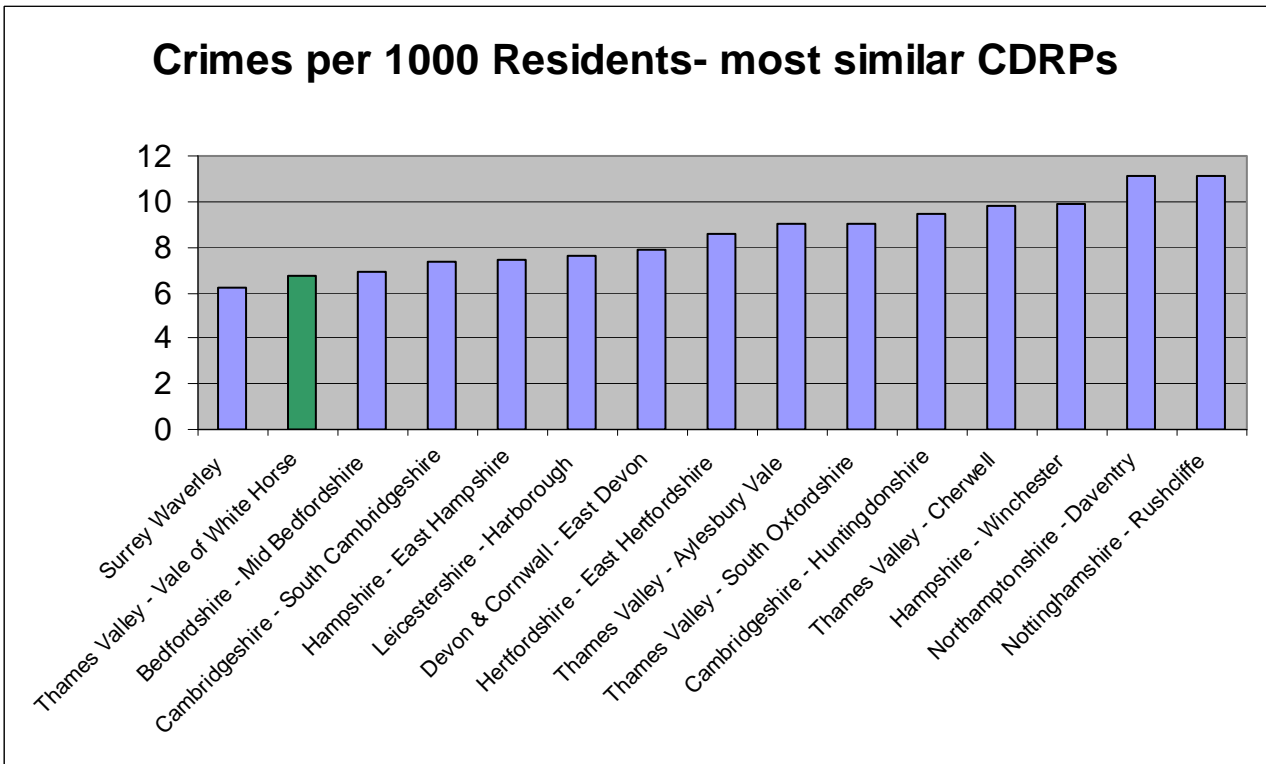
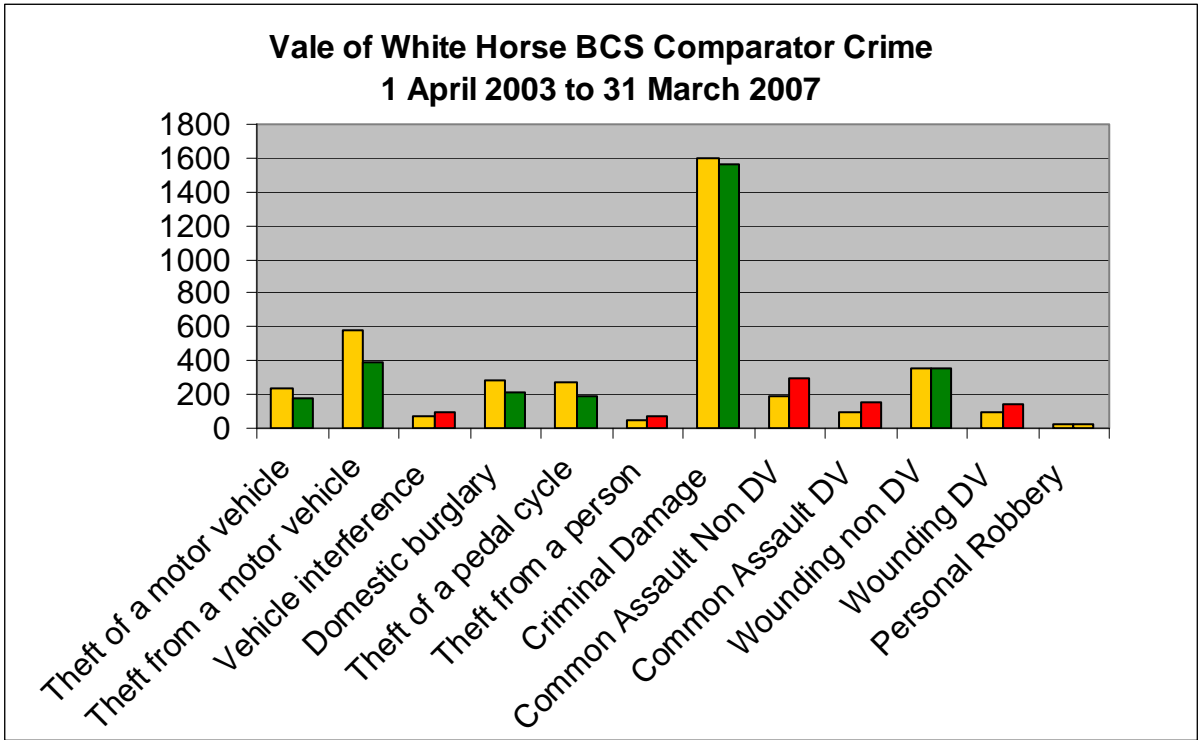
### **Personal Robbery**

Robbery is not a problem crime in the Vale. Offences are very rare and a number of offences involve schoolchildren in the form of aggressive bullying.

Against the baseline there is a +15.4% rise but this equates to a handful of offences. There is no rise against last year and currently only 15 offences recorded for the year to date.

1 April 2003 to 31 March 2007 Full Year Data						
BCS Comparator Crime Type	2003/04 Baseline	2004/05	2005/06	2006/07	06/7 Vs Baseline	Status
Theft of a motor vehicle	233	247	209	173	-25.75%	Green
Theft from a motor vehicle	575	456	474	396	-31.13%	Green
Vehicle interference	74	111	104	92	24.32%	Red
Domestic burglary	279	259	289	215	-22.94%	Green
Theft of a pedal cycle	270	308	266	189	-30.00%	Green
Theft from a person	49	50	50	67	36.73%	Red
Criminal damage	1601	1,500	1,463	1,567	-2.12%	Green
Common assault non DV	190	167	137	293	54.21%	Red
Common assault DV	91	81	85	152	67.03%	Red
Wounding non DV	359	395	354	351	-2.23%	Green
Wounding DV	94	166	173	148	57.45%	Red
Personal robbery	23	19	15	25	8.70%	Yellow
<b>TOTAL(S)</b>	<b>3838</b>	<b>3759</b>	<b>3619</b>	<b>3668</b>	<b>-4.43%</b>	Green

British Crime Survey Comparator Crimes 10 months from 1 April to 10 October 2007						
BCS Comparator Crime Type	2003/04 Baseline	2006/07	2007/8	% Change against baseline	% change 06/7 V 07/8	Status
Theft of a motor vehicle	139	88	53	-61.9%	-39.8%	Green
Theft from a motor vehicle	378	225	152	-59.8%	-32.4%	Green
Vehicle interference	42	46	18	-57.1%	-60.9%	Green
Domestic burglary	155	123	78	-49.7%	-36.6%	Green
Theft of a pedal cycle	165	120	83	-49.7%	-30.8%	Green
Theft from a person	28	40	34	21.4%	-15.0%	Yellow
Criminal damage	838	809	769	-8.2%	-4.9%	Green
Common assault non DV	122	162	127	4.1%	-21.6%	Yellow
Common assault DV	44	78	86	95.5%	10.3%	Red
Wounding non DV	182	181	186	2.2%	2.8%	Yellow
Wounding DV	51	78	78	52.9%	0.0%	Red
Personal robbery	15	13	15	0.0%	15.4%	Green
<b>TOTAL(S)</b>	<b>2159</b>	<b>1963</b>	<b>1679</b>	<b>-22.2%</b>	<b>-14.5%</b>	Green



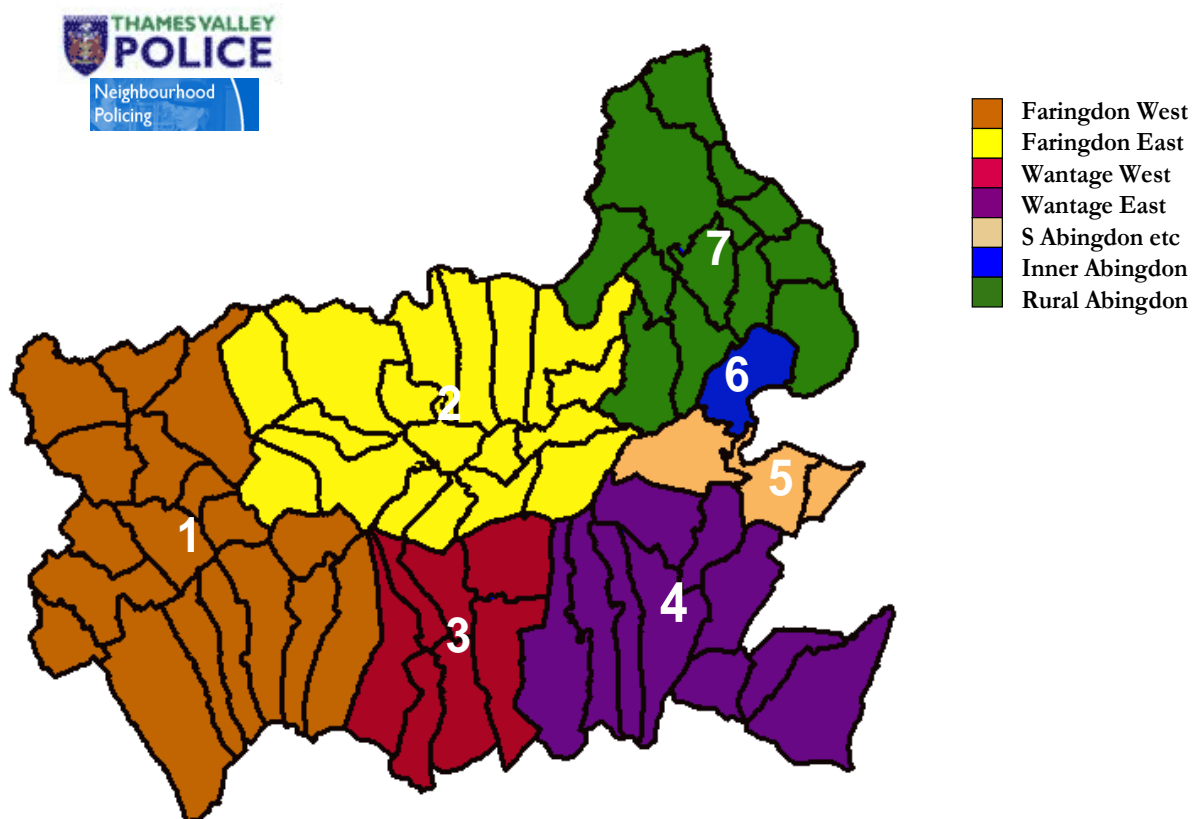
Source iQuanta

iQuanta is a police performance tool, developed by the Home Office. It contains all crime statistics from each police force in the country, and produces performance related tables and charts.

## 2.2 Neighbourhood Policing

The Vale of White Horse Local Police Area has been divided into 14 Neighbourhoods. Each neighbourhood is made up by a cluster of Parishes or Wards. These are serviced by seven Neighbourhood Action Groups (NAGs). All of the NAG areas within the Vale are currently “live”. Public consultation has been carried out across the Vale of White Horse area and the top three priorities have been identified in all but one of the NAG areas.

Each NAG area has its own dedicated team of police officers and police community support officers.



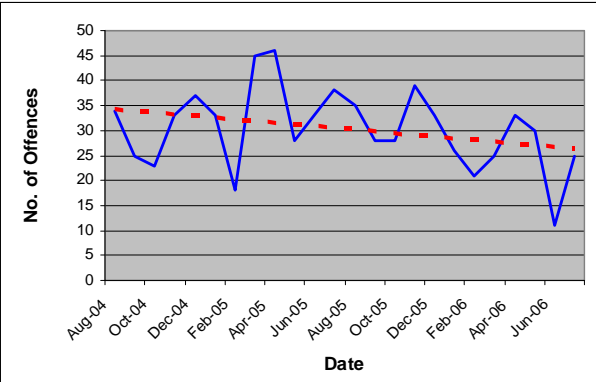
SIA findings:

- Continued improvement of the consultation process to identify neighbourhood concerns using all available data that is received to ensure all views are taken into account and emerging crime trends are tackled as effectively as established ones.
- Work more closely with community safety partners to better enable communities to tackle local priorities and alleviate pressure on local authority services involved in actioning priorities.

For more information please refer to:

<http://www.thamesvalley.police.uk/bcu/Oxfordshire/local-police-area/VOWH/VOWH>

Neighbourhood Action Group 1 – Faringdon West																											
<b>Key crime and anti-social behaviour Issues</b>	<b>Demographic snapshot – Source Census 2001</b>																										
<ul style="list-style-type: none"> <li>• The largest of all the NAGs geographically, comprised of <b>Craven, Shrivenham, Faringdon and The Coxwells</b>.</li> <li>• Predominantly a rural NAG dominated by the Market Town of Faringdon.</li> <li>• More than 60% of crime in the NAG has occurred in the ward containing Faringdon itself.</li> <li>• Between August 2004 and July 2006 there were 1025 crimes recorded with 22.5% of these crimes being Criminal Damage.</li> <li>• 69.7% of all crimes recorded are ‘priority crimes’</li> <li>• The volume of crime peaked in October 2005 but following this fell to the lowest levels experienced for over a year in December 2005. The smaller peak that occurred in June 2006 can be attributed to rises in burglary dwelling, non-dwelling and vehicle crime.</li> </ul>	<table border="0"> <tr> <td>Population</td> <td>14,714</td> </tr> <tr> <td>Percentage under 16:</td> <td>21.5%</td> </tr> <tr> <td colspan="2"><u>Ethnicity:</u></td> </tr> <tr> <td>White</td> <td>97.6%</td> </tr> <tr> <td>Asian or Asian British</td> <td>0.70%</td> </tr> <tr> <td>Chinese or Other Ethnic</td> <td>0.96%</td> </tr> <tr> <td colspan="2"><u>Housing:</u></td> </tr> <tr> <td>Detached, Semi-Detached Or Terraced housing</td> <td>92.2%</td> </tr> <tr> <td>Owner Occupied Housing</td> <td>61.5%</td> </tr> <tr> <td colspan="2"><u>Employment:</u></td> </tr> <tr> <td>Unemployed</td> <td>1.2%</td> </tr> <tr> <td>Retired</td> <td>7.8%</td> </tr> </table>	Population	14,714	Percentage under 16:	21.5%	<u>Ethnicity:</u>		White	97.6%	Asian or Asian British	0.70%	Chinese or Other Ethnic	0.96%	<u>Housing:</u>		Detached, Semi-Detached Or Terraced housing	92.2%	Owner Occupied Housing	61.5%	<u>Employment:</u>		Unemployed	1.2%	Retired	7.8%		
Population	14,714																										
Percentage under 16:	21.5%																										
<u>Ethnicity:</u>																											
White	97.6%																										
Asian or Asian British	0.70%																										
Chinese or Other Ethnic	0.96%																										
<u>Housing:</u>																											
Detached, Semi-Detached Or Terraced housing	92.2%																										
Owner Occupied Housing	61.5%																										
<u>Employment:</u>																											
Unemployed	1.2%																										
Retired	7.8%																										
<p><b>Monthly Ward Data Vale of White Horse August 2004 – July 2006</b>  <b>All Recorded Crime</b>  Craven, Shrivenham, Faringdon and The Coxwells</p> <table border="1"> <caption>Estimated Monthly Crime Data</caption> <thead> <tr> <th>Date</th> <th>No. of Offences</th> </tr> </thead> <tbody> <tr><td>Aug-04</td><td>55</td></tr> <tr><td>Oct-04</td><td>35</td></tr> <tr><td>Dec-04</td><td>45</td></tr> <tr><td>Feb-05</td><td>40</td></tr> <tr><td>Apr-05</td><td>50</td></tr> <tr><td>Jun-05</td><td>45</td></tr> <tr><td>Aug-05</td><td>50</td></tr> <tr><td>Oct-05</td><td>75</td></tr> <tr><td>Dec-05</td><td>40</td></tr> <tr><td>Feb-06</td><td>45</td></tr> <tr><td>Apr-06</td><td>45</td></tr> <tr><td>Jun-06</td><td>65</td></tr> </tbody> </table>	Date	No. of Offences	Aug-04	55	Oct-04	35	Dec-04	45	Feb-05	40	Apr-05	50	Jun-05	45	Aug-05	50	Oct-05	75	Dec-05	40	Feb-06	45	Apr-06	45	Jun-06	65	<p><b>Key Findings:</b>  Craven Ward has a disproportionate amount of theft from vehicles (28.2% of all crimes). This is largely to do with the beauty spots along the Ridgeway and vulnerable cars in these areas.</p> <p>There is a high proportion of burglaries in all of the three wards which form NAG 1, although there are almost twice as many non-dwelling burglaries as dwelling burglaries. The majority of these were breaks to domestic garages and sheds.</p>
Date	No. of Offences																										
Aug-04	55																										
Oct-04	35																										
Dec-04	45																										
Feb-05	40																										
Apr-05	50																										
Jun-05	45																										
Aug-05	50																										
Oct-05	75																										
Dec-05	40																										
Feb-06	45																										
Apr-06	45																										
Jun-06	65																										
<b>Priorities: Speeding, anti- social behaviour, criminal damage</b>																											

Neighbourhood Action Group 2 – Faringdon East																											
<b>Key crime and anti-social behaviour Issues</b>	<b>Demographic snapshot – Source Census 2001</b>																										
<p>This NAG is comprised of the following four wards: <b>Hanneys, Stanford, Longworth, Kingston Bagpuize with Southmoor.</b></p> <p>There have only been 76 criminal damage offences recorded in the last two years. This amounts to only 15.2% of all crimes which is well below the average for the Local Police Area (22.4%).</p> <p>The graph below shows that there is variation in the volume of crime experienced from month to month in NAG 2. Despite this, there is an overall downward trend and a positive decrease in crime has been recorded since April 2005. June 2006 had a particularly low number of crimes recorded for the month.</p>	<table border="0"> <tr> <td>Population</td> <td>8828</td> </tr> <tr> <td>Percentage under 16:</td> <td>20.5%</td> </tr> <tr> <td colspan="2"><b>Ethnicity:</b></td> </tr> <tr> <td>White</td> <td>98.8%</td> </tr> <tr> <td>Asian or Asian British</td> <td>0.36%</td> </tr> <tr> <td>Mixed Ethnic Group</td> <td>0.45%</td> </tr> <tr> <td colspan="2"><b>Housing:</b></td> </tr> <tr> <td>Detached, Semi-Detached Or Terraced housing</td> <td>99.8%</td> </tr> <tr> <td>Owner Occupied Housing</td> <td>79.4%</td> </tr> <tr> <td colspan="2"><b>Employment:</b></td> </tr> <tr> <td>Unemployed</td> <td>1%</td> </tr> <tr> <td>Retired</td> <td>9.9%</td> </tr> </table>	Population	8828	Percentage under 16:	20.5%	<b>Ethnicity:</b>		White	98.8%	Asian or Asian British	0.36%	Mixed Ethnic Group	0.45%	<b>Housing:</b>		Detached, Semi-Detached Or Terraced housing	99.8%	Owner Occupied Housing	79.4%	<b>Employment:</b>		Unemployed	1%	Retired	9.9%		
Population	8828																										
Percentage under 16:	20.5%																										
<b>Ethnicity:</b>																											
White	98.8%																										
Asian or Asian British	0.36%																										
Mixed Ethnic Group	0.45%																										
<b>Housing:</b>																											
Detached, Semi-Detached Or Terraced housing	99.8%																										
Owner Occupied Housing	79.4%																										
<b>Employment:</b>																											
Unemployed	1%																										
Retired	9.9%																										
<p align="center"><b>Monthly Ward Data</b>  <b>Vale of White Horse August 2004 - July 2006 All Recorded Crime</b>  Hanneys, Stanford, Longworth, Kingston Bagpuize with Southmoor</p>  <table border="1"> <caption>Monthly Recorded Crime Data (Estimated)</caption> <thead> <tr> <th>Date</th> <th>No. of Offences</th> </tr> </thead> <tbody> <tr><td>Aug-04</td><td>35</td></tr> <tr><td>Oct-04</td><td>25</td></tr> <tr><td>Dec-04</td><td>35</td></tr> <tr><td>Feb-05</td><td>20</td></tr> <tr><td>Apr-05</td><td>45</td></tr> <tr><td>Jun-05</td><td>30</td></tr> <tr><td>Aug-05</td><td>38</td></tr> <tr><td>Oct-05</td><td>28</td></tr> <tr><td>Dec-05</td><td>38</td></tr> <tr><td>Feb-06</td><td>22</td></tr> <tr><td>Apr-06</td><td>32</td></tr> <tr><td>Jun-06</td><td>12</td></tr> </tbody> </table>	Date	No. of Offences	Aug-04	35	Oct-04	25	Dec-04	35	Feb-05	20	Apr-05	45	Jun-05	30	Aug-05	38	Oct-05	28	Dec-05	38	Feb-06	22	Apr-06	32	Jun-06	12	<p><b>Key Findings:</b></p> <p>The proportion of theft from vehicles committed in Kingston Bagpuize equates to 20% of all crimes, although the number of actual offences is low. This may be due in part, to its close proximity to the A420 and A415 (including theft of fuel from lorries left in lay-bys overnight). The A420 is used for criminals commuting in and out of Oxfordshire.</p>
Date	No. of Offences																										
Aug-04	35																										
Oct-04	25																										
Dec-04	35																										
Feb-05	20																										
Apr-05	45																										
Jun-05	30																										
Aug-05	38																										
Oct-05	28																										
Dec-05	38																										
Feb-06	22																										
Apr-06	32																										
Jun-06	12																										
<b>Priorities: Public engagement in process</b>																											

**Neighbourhood Action Group 3 – Wantage West**

<b>Key crime and anti-social behaviour Issues</b>	<b>Demographic snapshot – Source Census 2001</b>
---	--

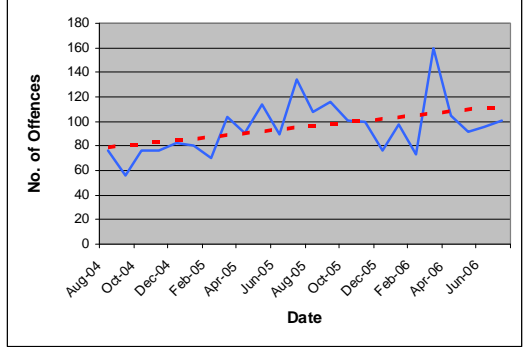
NAG 3 is dominated by the town of **Wantage (Charlton and Segsbury) in addition to Grove and Greendown.**

Between November 2004 and October 2005 this NAG saw a spasmodic pattern of crime levels. While this increase dropped off considerably during the winter months. In March 2006 offences rose to reach their highest level for two years. This particular spike in crime seems to be attributable to 55 criminal damage to vehicles offences that were committed in Wantage. 30 of these offences occurred in the street adjacent to King Alfreds School (Centre Site).

This area has seen an expansion in recent years with several new housing developments emerging in Wantage town centre and in Grove. Plans are being made to build a new secondary school and to improve facilities in general, in order to accommodate the increasing population.

Population	20,095
Percentage under 16:	21.3%
<u>Ethnicity:</u>	
White	98.6%
Mixed Ethnic Groups	0.51%
Asian or Asian British	0.39%
<u>Housing:</u>	
Detached, Semi-Detached Or Terraced housing	92.1%
Owner Occupied Housing	75.7%
<u>Employment:</u>	
Unemployed	1.1%
Retired	9.3%

**Monthly Ward Data Vale of White Horse August 2004 - July 2006**  
**All Recorded Crime**  
 Wantage Charlton, Greendown, Wantage Segsbury, Grove

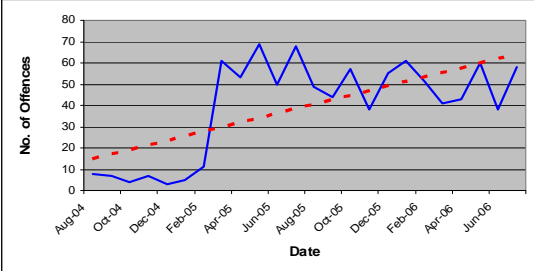


**Key Findings:**  
 In Wantage Segsbury, more than a third (30.9%) of all crime is criminal damage. However, priority crimes such as burglary and theft of vehicles are below average.

Violent offences on this NAG are the highest across the area (not including Abingdon Town Centre). There were 452 offences of violence against the person reported in the last two years. Offences are above average in Grove (21.0% compared to average of 19.8%) and Wantage Segsbury (28.8%).

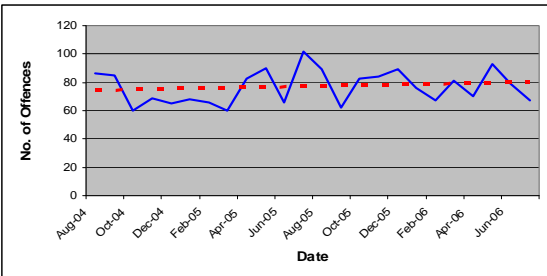
There is a high proportion of community disorder, rowdy/nuisance behaviour and noise nuisance.

**Priorities: Anti-social Behaviour, Speeding, Underage Drinking**

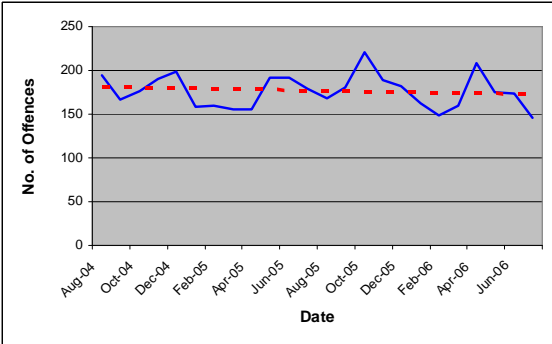
<b>Neighbourhood Action Group 4 – Wantage East</b>																											
<b>Key crime and anti-social behaviour Issues</b>	<b>Demographic snapshot – Source Census 2001</b>																										
<p>A rural area which covers the economically important <b>Milton Park Industrial Estate, Harwell, The Hendreds, Blewbury and Upton</b>. A large number of scientific and engineering companies, the MS Therapy Centre and the politically important Rutherford Laboratories at Harwell are within this area. (<a href="http://www.miltonpark.co.uk">www.miltonpark.co.uk</a>).</p> <p>Nine PCSOs provide 24-hour patrol for Milton Park and the surrounding area which includes Sutton Courtenay, Drayton, Steventon, Harwell, Upton and Chilton. Their role is to build links on the business park and in the local area with people who live and work there. They have traffic warden powers so they can deal with parking issues and can assist with speed control, an issue which has been raised on the business park. They can stop vehicles and check documents. The PCSOs will not be replacing Milton Park's own security which will operate as normal and in partnership with the police and PCSOs.</p>	<table border="0"> <tr> <td>Population</td> <td>9782</td> </tr> <tr> <td>Percentage under 16:</td> <td>20.1%</td> </tr> <tr> <td>Ethnicity:</td> <td></td> </tr> <tr> <td>White</td> <td>98.6%</td> </tr> <tr> <td>Mixed Ethnic Group</td> <td>0.67%</td> </tr> <tr> <td>Asian or Asian British</td> <td>0.35%</td> </tr> <tr> <td>Chinese or Other Ethnic</td> <td>0.35%</td> </tr> <tr> <td>Housing:</td> <td></td> </tr> <tr> <td>Detached, Semi-Detached Or Terraced housing</td> <td>93.5%</td> </tr> <tr> <td>Owner Occupied Housing</td> <td>73.8%</td> </tr> <tr> <td>Employment:</td> <td></td> </tr> <tr> <td>Unemployed</td> <td>1.1%</td> </tr> <tr> <td>Retired</td> <td>10.9%</td> </tr> </table>	Population	9782	Percentage under 16:	20.1%	Ethnicity:		White	98.6%	Mixed Ethnic Group	0.67%	Asian or Asian British	0.35%	Chinese or Other Ethnic	0.35%	Housing:		Detached, Semi-Detached Or Terraced housing	93.5%	Owner Occupied Housing	73.8%	Employment:		Unemployed	1.1%	Retired	10.9%
Population	9782																										
Percentage under 16:	20.1%																										
Ethnicity:																											
White	98.6%																										
Mixed Ethnic Group	0.67%																										
Asian or Asian British	0.35%																										
Chinese or Other Ethnic	0.35%																										
Housing:																											
Detached, Semi-Detached Or Terraced housing	93.5%																										
Owner Occupied Housing	73.8%																										
Employment:																											
Unemployed	1.1%																										
Retired	10.9%																										
<p><b>Monthly Ward Data Vale of White Horse August 2004 - July 2006</b>  <b>All Recorded Crime</b>  Hendreds, Harwell, Blewbury and Upton</p>  <p>The graph above shows a significant rise in crime between January and March 2005. This relates to an internet enquiry by Thames Valley Police identifying a number of offences through the internet site Ebay.</p>	<p><b>Key Findings:</b></p> <p>Criminal damage and violence against the Person offences account for just 10.7% and 9.7% of all crime respectively.</p> <p>Burglary non dwelling offences in the Harwell ward are the highest in the area. The last two years has seen a total of 72 non dwelling burglaries. The majority of these offences have been to private premises (domestic garages and sheds).</p> <p>Theft from vehicles is a high priority for the Hendreds ward. This is likely to be due to theft from vehicles parked along the Ridgeway [similar to the problem faced in Craven ward (NAG 1)].</p> <p>There have been relatively few incidents of rowdy/nuisance behaviour and no complaints of graffiti reported to the District Council within the two year period.</p>																										
<b>Priorities: Anti-social behaviour, criminal damage, speeding</b>																											

**Neighbourhood Action Group 5 – South Abingdon**

<p><b>Key crime and anti-social behaviour Issues</b></p>	<p><b>Demographic snapshot – Source Census 2001</b></p>	
<p>This NAG includes the socially diverse Caldecott and Ock Meadow wards of Abingdon Town and the more rural areas of Drayton and Sutton Courtney and Appleford. This is the only NAG to incorporate Rural and Urban wards to such an extent. Caldecott ward is the most deprived ward across the whole of the area.</p> <p>The graph shows that despite some quite significant fluctuations, crime has generally remained stable over the past two years.</p> <p>The majority of offences in this NAG occur in the Abingdon wards; 75.2% of crime in NAG 5 is committed in Abingdon South (ME52). However, the surrounding villages of Drayton, Sutton Courtenay and Appleford each have their own policing needs and should not be overlooked.</p>	<p>Population 13,559</p> <p>Percentage under 16: 21.0%</p> <p>Ethnicity:</p> <p>White 97.9%</p> <p>Mixed Ethnic Group 0.86%</p> <p>Chinese or Other Ethnic Group 0.54%</p> <p>Housing:</p> <p>Detached, Semi-Detached Or Terraced Housing 87.8%</p> <p>Owner Occupied Housing 70.2%</p> <p>Employment:</p> <p>Unemployed 1.4%</p> <p>Retired 9.8%</p>	

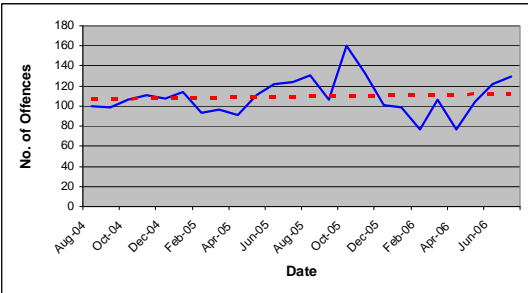
<p><b>Monthly Ward Data Vale of White Horse August 2004 - July 2006</b>  <b>All Recorded Crime</b>                  Drayton, Sutton Courtenay, Appleford and ME52 (Abingdon South)</p> 	<p><b>Key Findings:</b></p> <p>Criminal damage and violence against the Person offences make up 52% of all crime.</p> <p>Levels of burglary (dwelling and non-dwelling) and vehicle crime are below average in Abingdon South. Burglary non-dwelling and theft from vehicles are more of a concern in the Sutton Courtenay and Appleford ward.</p> <p>All six priority crime categories are of concern in the Drayton ward. Only 38 of the 160 crimes committed in this ward over the two year period were not priority crimes. The proximity of Drayton to the Abingdon Caldecott ward may be causing some displacement to occur, as there is likely to be less of a police presence in the smaller villages.</p>
--	--

**Priorities: Anti-social behaviour, speeding, alcohol/underage drinking**

<b>Neighbourhood Action Group 6 – Inner Abingdon</b>																											
<b>Key crime and anti-social behaviour Issues</b>	<b>Demographic snapshot – Source Census 2001</b>																										
<p>This is by far the most densely populated area of all the NAGs as it covers Abingdon Town. This NAG does not include South Abingdon.</p> <p>The graph below shows a very slight decrease in the number of offences committed in the town although on the whole, levels have remained fairly constant. On a positive note, crime fell to its lowest point in two years in July 2006, with just 146 offences recorded.</p> <p>63.8% of crime committed in Abingdon North, Abingdon East and Abingdon Central over the past two years was “priority crime”.</p>	<table border="0"> <tr> <td>Population</td> <td>22,720</td> </tr> <tr> <td>Percentage under 16:</td> <td>20.4%</td> </tr> <tr> <td>Ethnicity:</td> <td></td> </tr> <tr> <td>  White</td> <td>96.9%</td> </tr> <tr> <td>  Asian or Asian British</td> <td>1.08%</td> </tr> <tr> <td>  Mixed Ethnic Group</td> <td>0.96%</td> </tr> <tr> <td>Housing:</td> <td></td> </tr> <tr> <td>  Detached, Semi-Detached Or Terraced housing</td> <td>84.5%</td> </tr> <tr> <td>  Owner Occupied Housing</td> <td>78.6%</td> </tr> <tr> <td>Employment:</td> <td></td> </tr> <tr> <td>  Unemployed</td> <td>1.3%</td> </tr> <tr> <td>  Retired</td> <td>7.8%</td> </tr> </table>	Population	22,720	Percentage under 16:	20.4%	Ethnicity:		White	96.9%	Asian or Asian British	1.08%	Mixed Ethnic Group	0.96%	Housing:		Detached, Semi-Detached Or Terraced housing	84.5%	Owner Occupied Housing	78.6%	Employment:		Unemployed	1.3%	Retired	7.8%		
Population	22,720																										
Percentage under 16:	20.4%																										
Ethnicity:																											
White	96.9%																										
Asian or Asian British	1.08%																										
Mixed Ethnic Group	0.96%																										
Housing:																											
Detached, Semi-Detached Or Terraced housing	84.5%																										
Owner Occupied Housing	78.6%																										
Employment:																											
Unemployed	1.3%																										
Retired	7.8%																										
<p><b>Monthly Ward Data Vale of White Horse August 2004 - July 2006</b>  <b>All Recorded Crime</b>  ME49 Abingdon North, ME50 Abingdon East and ME51 Abingdon Central</p>  <table border="1"> <caption>Approximate data from the graph</caption> <thead> <tr> <th>Date</th> <th>No. of Offences</th> </tr> </thead> <tbody> <tr><td>Aug-04</td><td>180</td></tr> <tr><td>Oct-04</td><td>160</td></tr> <tr><td>Dec-04</td><td>180</td></tr> <tr><td>Feb-05</td><td>150</td></tr> <tr><td>Apr-05</td><td>150</td></tr> <tr><td>Jun-05</td><td>180</td></tr> <tr><td>Aug-05</td><td>170</td></tr> <tr><td>Oct-05</td><td>220</td></tr> <tr><td>Dec-05</td><td>180</td></tr> <tr><td>Feb-06</td><td>150</td></tr> <tr><td>Apr-06</td><td>200</td></tr> <tr><td>Jun-06</td><td>146</td></tr> </tbody> </table>	Date	No. of Offences	Aug-04	180	Oct-04	160	Dec-04	180	Feb-05	150	Apr-05	150	Jun-05	180	Aug-05	170	Oct-05	220	Dec-05	180	Feb-06	150	Apr-06	200	Jun-06	146	<p><b>Key Findings:</b></p> <p>Like many of the more densely populated areas, Abingdon suffers from a large proportion of criminal damage and violence against the person offences. This accounts for almost half of all crime committed (24.1% and 26.5% respectively).</p> <p>There are disproportionate levels of criminal damage in Abingdon North and Abingdon East and disproportionate levels of violence in Abingdon Central. These are the main priorities for this NAG.</p> <p>Burglary dwelling and non-dwelling are relatively low in all three areas of Abingdon.</p> <p>Theft from vehicle offences are relatively low across all areas of this NAG.</p>
Date	No. of Offences																										
Aug-04	180																										
Oct-04	160																										
Dec-04	180																										
Feb-05	150																										
Apr-05	150																										
Jun-05	180																										
Aug-05	170																										
Oct-05	220																										
Dec-05	180																										
Feb-06	150																										
Apr-06	200																										
Jun-06	146																										
<p><b>Priorities: Anti-social behaviour, gangs of youths, underage drinking</b></p>																											

**Neighbourhood Action Group 7 – Rural Abingdon**

<p><b>Key crime and anti-social behaviour Issues</b></p>	<p><b>Demographic snapshot – Source Census 2001</b></p>	
<p>This NAG is comprised of three neighbourhoods; its location dictates that it has a higher transient population due to its proximity to Oxford. It is comprised of the wards: <b>North Hinksey and Wytham, Kennington and South Hinksey, Radley, Sunningwell and Wootton, Marcham and Shippon, Appleton and Cumnor.</b> Also within this NAG are <b>Westminster College and Radley College.</b></p> <p>It has the highest Neighbourhood Population with nearly 26,000 residents and it also has a higher than average number of elderly residents (18.1% are over the age of 65). It is comprised of six different wards. In the last two years there have been 183 burglaries in this area.</p> <p>68.6% of all crimes reported in this NAG were priority crimes.</p>	<p>Population 25,929</p> <p>Percentage under 16: 19.4%</p> <p>Ethnicity:</p> <p>White 96.6%</p> <p>Asian or Asian British 1.0%</p> <p>Chinese or Other Ethnic Groups 1.13%</p> <p>Housing:</p> <p>Detached, Semi-Detached Or Terraced housing 92.6%</p> <p>Owner Occupied Housing 77.8%</p> <p>Employment:</p> <p>Unemployed 1.1%</p> <p>Retired 10.9%</p>	

<p><b>Monthly Ward Data Vale of White Horse August 2004 - July 2006</b>  <b>All Recorded Crime</b></p> <p>North Hinksey and Wytham, Kennington and South Hinksey, Radley, Sunningwell and Wootton, Marcham and Shippon, Appleton and Cumnor</p> 	<p><b>Key Findings:</b></p> <p>Criminal damage and violence against the person offences are relatively low.</p> <p>Burglary dwelling and non-dwelling offences however, are the highest in the area. There may be a certain level of displacement from Oxford City into North Hinksey and Kennington and from Abingdon in to Wootton and Sunningwell.</p> <p>There have been slightly more offences concerning non-dwellings than to dwellings though both should be considered a priority.</p> <p>The greatest number of theft from vehicle offences in the whole of the Vale occurs in this area. Theft of vehicles is also substantial in this area. Vehicle crime should therefore be a priority for this area.</p>
---	---

**Priorities: Speeding, anti-social behaviour, parking,**

## 2.3 Anti- social behaviour (ASB)

- The main hotspots for Anti-social behaviour are:
  - The Charter, Abingdon
  - Grebe Close, Abingdon
  - Saxton Road, Abingdon
  - Andersey Way, Abingdon
  - Neave Mews, Abingdon
  - Peachcroft Estate, Abingdon
  - Abbey Grounds, Abingdon
  - Margaret Browns Gardens, Abingdon
  - Tilsey Park, Abingdon
  - Southampton Street, Faringdon
  - King Alfred School, Wantage
  - Segsbury, Wantage

Hot spots change regularly and all areas of the Vale should therefore be regularly monitored.

- Vale Housing Association identified Anti-social behaviour geographical hotspots as Saxton Road Abingdon, Matthews Way, Wootton and Westfields Harwell. 37% of Anti-social behaviour cases occurred in Abingdon, but this is reflected in the spread of the housing stock, which is 31%. The majority (38%) of complaints concerned noise.
- The Vale District Council ASB Officer received 183 different complaints within the reporting period regarding Anti-social behaviour. Common problems are threats of harassment, young people and noise, which is borne out by the NAGs results and information from Vale Housing.

### **SIA Recommendations:**

- Improve working arrangements between Youth Offending Service and city and District partners engaged in reducing anti-social behaviour, and where possible develop joint protocols, share resources, information, provide joint interventions etc. (young people)
- Continued improvement of the consultation process to identify neighbourhood concerns. Utilising all available data that is received to ensure all views are taken into account and emerging crime trends are tackled as effectively as established ones.
- Work more closely with community safety partners to enable communities to tackle local priorities and alleviate pressure on local authority services involved in actioning priorities.

## 2.4 Drugs Misuse

- In the period 1 April 2007 to 31 August 2007, there were 105 individuals (over 18s) accessing treatment in the Vale. 69% of these individuals were male (72 individuals).
- The majority of those accessing treatment were aged between 31-35 (30%), followed by those aged 26-30 (23%).
- The primary drug problem of 54% of those accessing treatment was heroin, followed by 21% for alcohol.
- "Evolve" the young peoples drug treatment service is now running across Oxfordshire since its commission in April 2006. It offers treatment to 10-18year olds. A total of 148 young people receive treatment across the county; there is a greater proportion of females than males presenting themselves for treatment.

### SIA Recommendations:

- The setting up of a drug testing facility in the TVP Abingdon custody suite would be beneficial in understanding the drug use in the Vale and will allow referrals to treatment agencies.

## 2.5 Arson

- In the period May 2006 to April 2007, there were a total of 127 primary fires in the Vale, of which 40 (31%) were deliberate. This accounts for 8% of the County's deliberate primary fires.
- Of these 40 deliberate fires, 23 involved transport, 14 non- domestic, and three were domestic. 17 of the 23 transport fires were dealt with by crews from Abingdon fire station.
- In the same period, there were 126 secondary deliberate fires in the Vale. This accounts for 17% of the total numbers in Oxfordshire.
- 57 of these 126 deliberate secondary fires involved refuse or refuse containers (45%).
- Crews from Abingdon fire station dealt with 67% of all secondary deliberate fires in the Vale.
- Inner Abingdon NAG 6 has the highest number of incidents for secondary deliberate fires and is the second highest in the category for primary fires.

A Primary Fire involves property/structures such as cars, houses, offices, shops and factories that require a fire report. A Secondary Fire is a minor fire involving such things as grassland, heath, hedges, verge, a single tree, rubbish and rubbish bins.

## 2.6 Road Safety

- There were 68 fatal road collisions in Oxfordshire in 2006. This was the highest road fatalities in Oxfordshire since 1990:

23 in Cherwell

18 South Oxfordshire

**14 Vale of White Horse**

11 West Oxfordshire

1 in Oxford

- Approximately 30% of **car drivers** died because they were not wearing a seat belt, conservative estimates suggest two thirds of these would have survived.
- 30% of front seat **passengers** who died were not wearing seat belts; this figure rises to 65% for rear seat passengers.
- The two highest distinct age groups for fatalities countywide are 20 years old and 39 years old with four deaths each.
- Fatalities Broken down into age groups , Oxfordshire county

11-15	2 deaths
16-20	10 deaths
21-25	6 deaths
26-30	11 deaths
31-35	4 deaths
36-40	9 deaths
41-45	3 deaths
46-50	3 deaths
51-55	4 deaths
56-60	6 deaths
61-95	10 deaths

There were 367 road collisions recorded in the Vale between 1 April 2006 and 31 March 2007.

The A34 was accountable for 70 of the 367 accidents (19%).

Of these 367 road accidents, 14 were fatal accidents. There were a total of 23 deaths in these fatal accidents. (i.e. multiple deaths within one road accident.)

The A420 was accountable for 11 of the 23 deaths.

The two highest distinct age groups for fatalities in the Vale were 30-39 (five fatalities), and 50-59 (four fatalities).

Five out of seven NAGs have raised speeding as one of their three priorities.

## 2.7 Domestic Violence (DV)

- DV Recordable - The Vale statistics have increased by 77% from 270 (03/4) to 479 (06/7) this compares with an increase of 54% for the County. However, compared with other Districts, the figures remain low.
- DV Non Recordable – The Vale statistics have increased by 100% from 242 (03/4) to 483 (06/7), this compares with an increase of 87% for the County.
- DV Repeat Rate – Data is only available for 2006/7 the Vale rate was 20% which is similar to the Oxfordshire county rate of 21%.
- Sexual Offences – The Vale statistics have increased by 83% from 52(03/4) to 95 (06/7), this compares with an Oxfordshire County increase of 44%.

### **SIA Recommendations:**

- Sustain champion networks and the current development of specialist domestic violence courts, Multi Agency Risk Assessment Conference ( MARACS) and Independent Domestic Violence Advocacy (IDVA)
- Develop further work with vulnerable groups as above, and consider cross cutting issues with alcohol strategy and sexual violence strategy as above.

## 2.8 Alcohol Related Crime

- Nightsafe has been rolled out in Abingdon, Wantage and Faringdon. The Vale Nightsafe/Licensing Forum meets six weekly to discuss the operational activity of Nightsafe. Membership of the forum includes:
  - Thames Valley Police
  - Vale Licensing Enforcement Officers
  - Vale Community Safety Manager
  - Trading Standards
  - Fire and Rescue representative
  - Members of Pub watch
- Since November 2006 seven drug dog operations have been conducted. In addition, multi-agency inspections are conducted periodically on all premises, not just those who have signed up to the charter. The purpose of the inspections is to check door supervisor badges, fire exits, emergency lighting, staff training files and underage drinking.
- Trading Standards conduct two test purchasing exercises per year in the Vale DC area; however the Vale DC licensing team in partnership with Neighbourhood Police Teams and the CDRP conduct additional exercises.
- AandE admission data is analysed monthly by the Vale Licensing/Nightsafe Forum.

## 2.9 Environmental Crime

- South Abingdon NAG 5 (21%) and Inner Abingdon NAG 6 (19%) have the majority of abandoned vehicles for Vale of White Horse.
- The Vale of White Horse has anecdotal evidence that cars are removed for banger racing after receiving a removal sticker and prior to actual removal.
- It is anticipated that the smoking restrictions in the work place will lead to an increase in littering.
- Graffiti and litter are most prominent at the following locations, The Charter – Abingdon, Southampton Street, and Faringdon in the Vale of White Horse Eynsham public toilets and shops.
- Vale District Council report that 50% of fly tipping is of a commercial nature.

## 2.10 Priority and Prolific Offenders (PPO)

- National crime reduction statistics show that 50% of all crime is committed by just 10% of all offenders. These offenders are commonly referred to as Prolific and other Priority Offenders (PPO). Since September 2003 in Oxford City and since April 2005 in all other parts of the County the Probation Service has been delivering Oxfordshire's PPO scheme commonly known as "The IRIS scheme". The scheme is often cited as a best practice example across the South East in terms of its PPO management.
- Settled accommodation has been identified as a significant offending-related need for PPOs both locally and nationally and given the largely negative perception of them amongst housing providers this issue presents significant challenges, which a targeted positive promotional campaign may help to address.
- PPOs tend to commit acquisitive crimes. National evidence identifies a significant overlap between this group and substance misusers in Oxfordshire, PPO scheme staff work very closely with Drug Intervention Programme (DIP) staff. In Oxford City the PPO Probation Officer and Tracker are located within the Probation Substance Misuse Team, which itself forms a significant element of the DIP.

The number of PPO's residing in each area is as follows:

○ Oxford	45	38 adults	7 juveniles
○ Cherwell	29	24 adults	5 juveniles
○ Vale of White Horse	17	17 adults	0 juveniles
○ South Oxfordshire	14	10 adults	4 juveniles
○ West Oxfordshire	11	7 adults	4 juveniles

## 2.11 Management of High Risk Offenders

MAPPA stands for Multi Agency Public Protection Arrangements. These involve the Responsible Authority (Police, Probation and HM Prison Service) and Duty to Cooperate partners (such as Social Services, Housing and Health). There are three MAPPA panels in Oxfordshire, covering North (Cherwell and West Oxfordshire.), City (Oxford City) and South (South Oxfordshire. and Vale of White Horse).

Each manages three categories of offenders: 1) Registered sex offenders, 2) Offenders released on licence from a prison sentence of 12 months or more for sexual or violent offences and 3) Any other offenders who present a risk of significant harm to others.

There are three levels of risk management for MAPPA offenders, which correspond to the risk presented and the resources needed to manage it.

- Level 1 normally involves management of the risk by a single agency, normally of those considered to be of low or medium risk.
- Level 2 involves joint-agency management of usually high risk cases, which are routinely reviewed at panel meetings on at least a monthly basis.
- Level 3 focuses on the 'critical few' cases in which risk of harm to others is deemed 'imminent'.

Here is a snapshot of the numbers of cases in each category and level of management being dealt with by the three Oxfordshire MAPPA Panels on 19 July 2007:

	<b>OXON</b>	<b>THAMES VALLEY</b>
<b>CAT 1</b>	320	987
<b>CAT 2</b>	167	567
<b>CAT 3</b>	12	117

### **SOUTH OXON (South Oxfordshire and Vale of White Horse)**

<b>CATEGORY 1</b>	<b>LEVEL 1</b>	<b>LEVEL 2</b>	<b>LEVEL 3</b>	<b>TOTAL</b>
	110	11	0	121

<b>CATEGORY 2</b>	<b>LEVEL 1</b>	<b>LEVEL 2</b>	<b>LEVEL 3</b>	<b>TOTAL</b>
	24	5	0	29

<b>CATEGORY 3</b>	<b>LEVEL 1</b>	<b>LEVEL 2</b>	<b>LEVEL 3</b>	<b>TOTAL</b>
	0	5	0	5

Information, collated nationally from individual Offender Assessment System assessments (OASys), identifies the risk-related needs of offenders. Initial indications from this, are that 25% of MAPPA offenders in South Oxfordshire under probation supervision have a long-term accommodation need. Accommodation has been identified nationally as a priority issue for attention in relation to both MAPPA and PPO offenders. Some accommodation providers may take a not in my back yard approach to this as well. Sex offenders generally are the MAPPA offender group who tend to need most help in finding long term accommodation.

In relation to victims, the MAPPA arrangements pay a great deal of attention to actual and potential victims of individual offenders.

## **2.12 Hate Crime**

- The total race hate crime during the reporting period reported to police was 603, a fall in race hate crime of 41 incidents across the county.
- EMBRACE (Ethnic Minority and Black Race Action Committee for Enterprise) is a multi- agency partnership group with members from South Oxfordshire, Vale of the White Horse, Oxfordshire County Council, Fire and Rescue, Thames Valley Police and Trading Standards. It was formed in 2005, with a view to tackling racial harassment and promoting community cohesion across Southern Oxfordshire. Work so far had focussed around the BME business community, helping to provide a network of support, providing access to translated legislation and information, and helping to raise equality of opportunity for BME communities.

## **2.13 Commercial Crime**

- During the stipulated period there were 74 non-dwelling offences reported across the BCU that involved the theft of high value metal.
- The cost of copper is steadily increasing, fuelled by demand from emerging world markets.
- Identity theft is a growing problem within the UK and therefore Oxfordshire.
- Commercial crime through theft from offices or warehouse by employees or external persons is an ongoing problem. The theft can be tangible goods or non-tangible theft based around the falsification of accounts, invoices or customer records to facilitate crime.

## **2.14 Fear of Crime**

Fear of crime or perceptions of crime, can be almost as important as actual crime figures when looking at community safety in an area. Fear of crime can have more impact on individuals of the community than actual incidents of crime.

### **SIA Recommendations:**

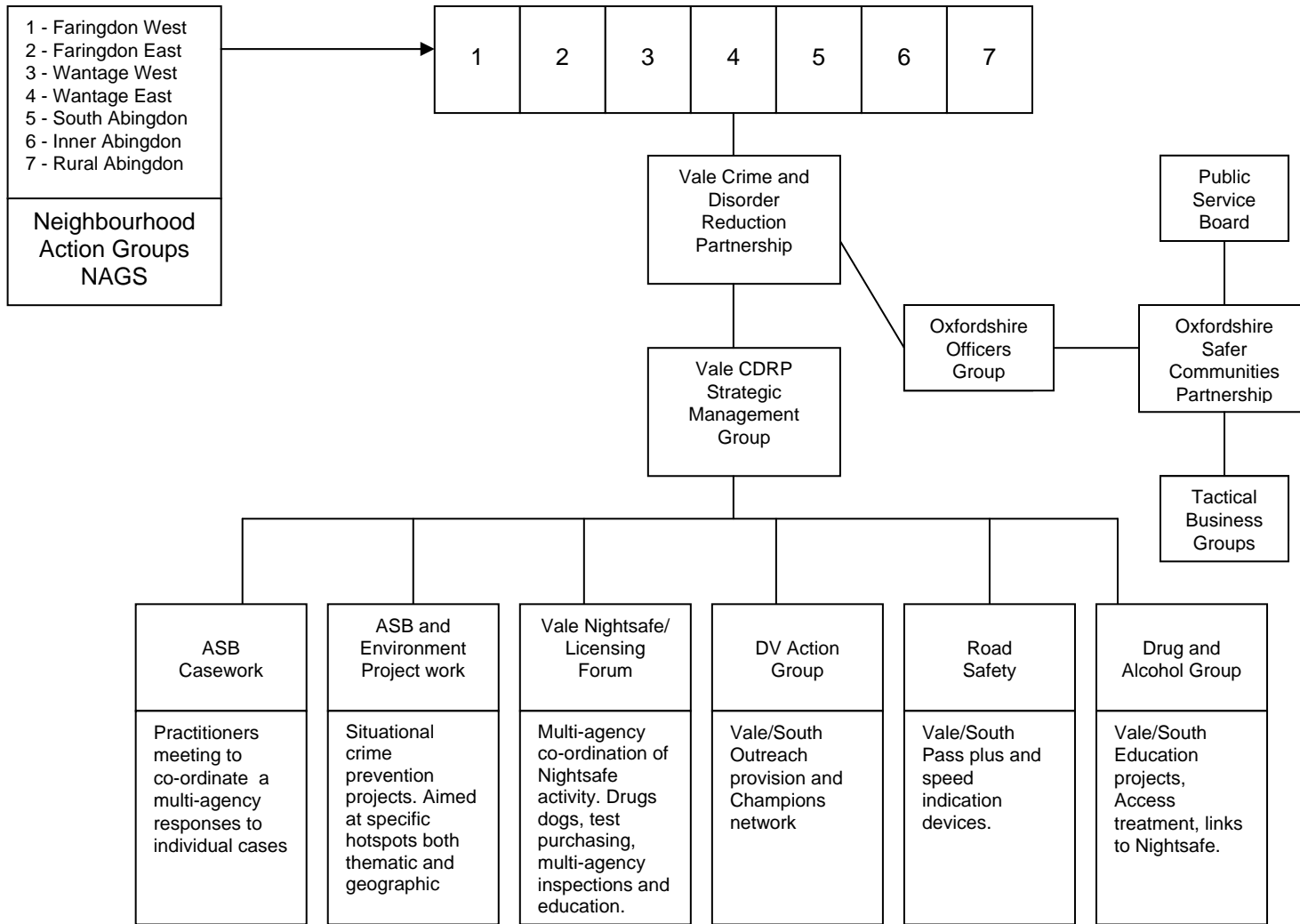
The Vale Community Safety Partnership needs to further develop its communication strategy to align the perception of the fear of crime to the actual recorded data. Overall, Oxfordshire's rural districts experience lower levels of crime compared with Thames Valley and South East averages and when compared with statistically similar Crime and Disorder Reduction Partnerships.

**Section 3  
Contact Details**

**Vale Community Safety Partnership – Contact List**

Vale of White Horse Community Safety	Abbey House, Abingdon, Oxfordshire, OX14 3JE	01235 540309	Liz.hayden@whitehorsedc.gov.uk
Oxford County Council Safer Communities Unit	Rewley Road Oxford OX1 2EH	01865 258517	Ruth.whyte@oxfordshire.gov.uk
Thames Valley Police	Colwell Drive Abingdon Oxfordshire OX14 1AU	0845 8505 505	
Oxfordshire PCT	5510 John Smith Drive Oxford Business Park South Cowley, Oxford OX4 2LH	01865 336875	Sangeeta.Richhariya-Leahy@oxfordshirepct.nhs.uk

## Vale Community Safety Partnership Structure



## Vale Community Safety Priorities -

Priority	Rationale	Possible link to National Indicator	
<b>Acquisitive Crime:</b> <ul style="list-style-type: none"> <li>• Theft of vehicle</li> <li>• Theft from vehicle</li> <li>• Vehicle interference</li> <li>• Domestic burglary</li> <li>• Theft of Pedal cycle</li> <li>• Theft from person</li> <li>• Burglary</li> <li>• Robbery</li> </ul>	2005-8 Strategy shows a reduction in this area. We should strive to maintain the low level during 2008-11.	NI 16	PSA 23
<b>Anti-Social Behaviour:</b> <ul style="list-style-type: none"> <li>• Criminal damage</li> <li>• Underage drinking</li> <li>• Noise</li> <li>• Rubbish/litter</li> <li>• Graffiti</li> <li>• Abandoned vehicles</li> <li>• Hate crime</li> </ul>	ASB has been selected as a priority by six NAGs. Criminal damage is reported in large numbers.	NI 17,21, 24, 25, 27	PSA 23
<b>Violent Crime:</b> <ul style="list-style-type: none"> <li>• Domestic violence</li> <li>• Common assault</li> <li>• Wounding</li> <li>• Alcohol related violent crime</li> <li>• Hate crime</li> </ul>	The reporting of DV has doubled during 2007/8. Police patrolling and the Nightsafe project have impacted on the alcohol related elements of this category.	NI 15, 20	PSA 23
<b>Priority and Prolific Offenders (PPOs)</b>	PPOs tend to commit acquisitive crime National statistics show that they are responsible for 50% of all crime.	NI 30	HO DSO
<b>Road safety</b>	Five out of seven Neighbourhood Action Groups have selected Speeding as a priority.	NI 47	DfT DSO
<b>Drug and alcohol misuse</b>	Cross cuts with all other priorities.	NI15, 16,20,38,39,41	
<b>Fear of crime</b>	The fear of crime remains relatively high despite that fact that crime is relatively low.		