

North Abingdon
Site Photographs

For

Vale of White Horse District Council

By

Hankinson Duckett Associates

HDA ref: 728.2
Issue: 01
Date: August 2014

Northern shelterbelt

Peach Croft Farm

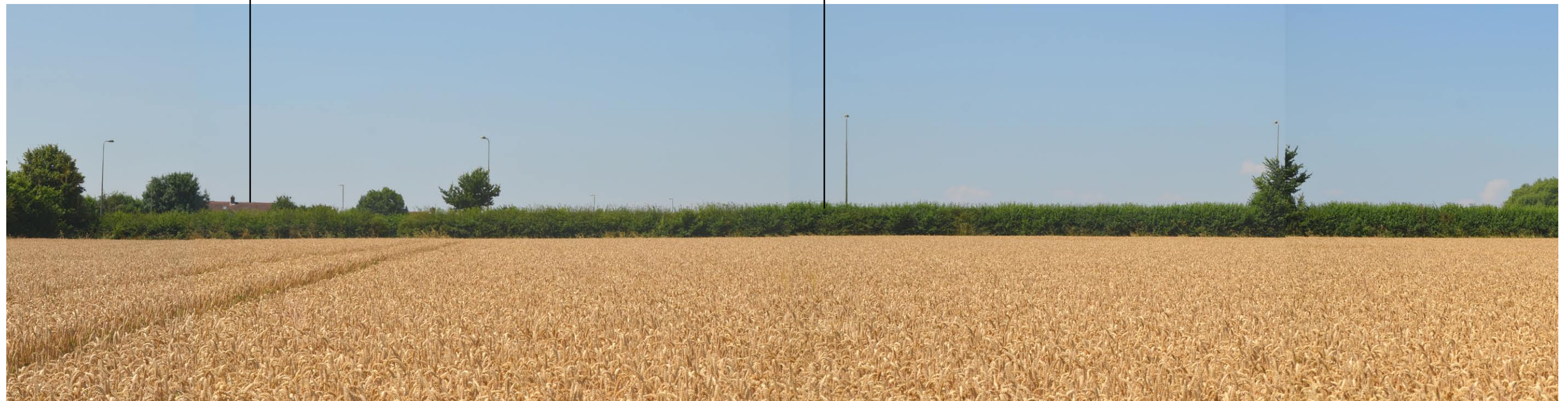
Line of poplar trees to the south-east of
the study area



Photograph 1: View of the central arable field within the study area

Northern edge of Abingdon

Hedgerow lining Oxford Road



Photograph 2: Looking west from Footpath 326/5 to the south-west of the study area

Vegetation lining Twelve Acre Drive



Photograph 1 continued.

Gap in boundary vegetation



Photograph 2 continued.

Northern shelterbelt

Peach Croft Farm

Treebelt in centre of the study area



Photograph 3: Looking east from footpath 326/5 within centre of study area

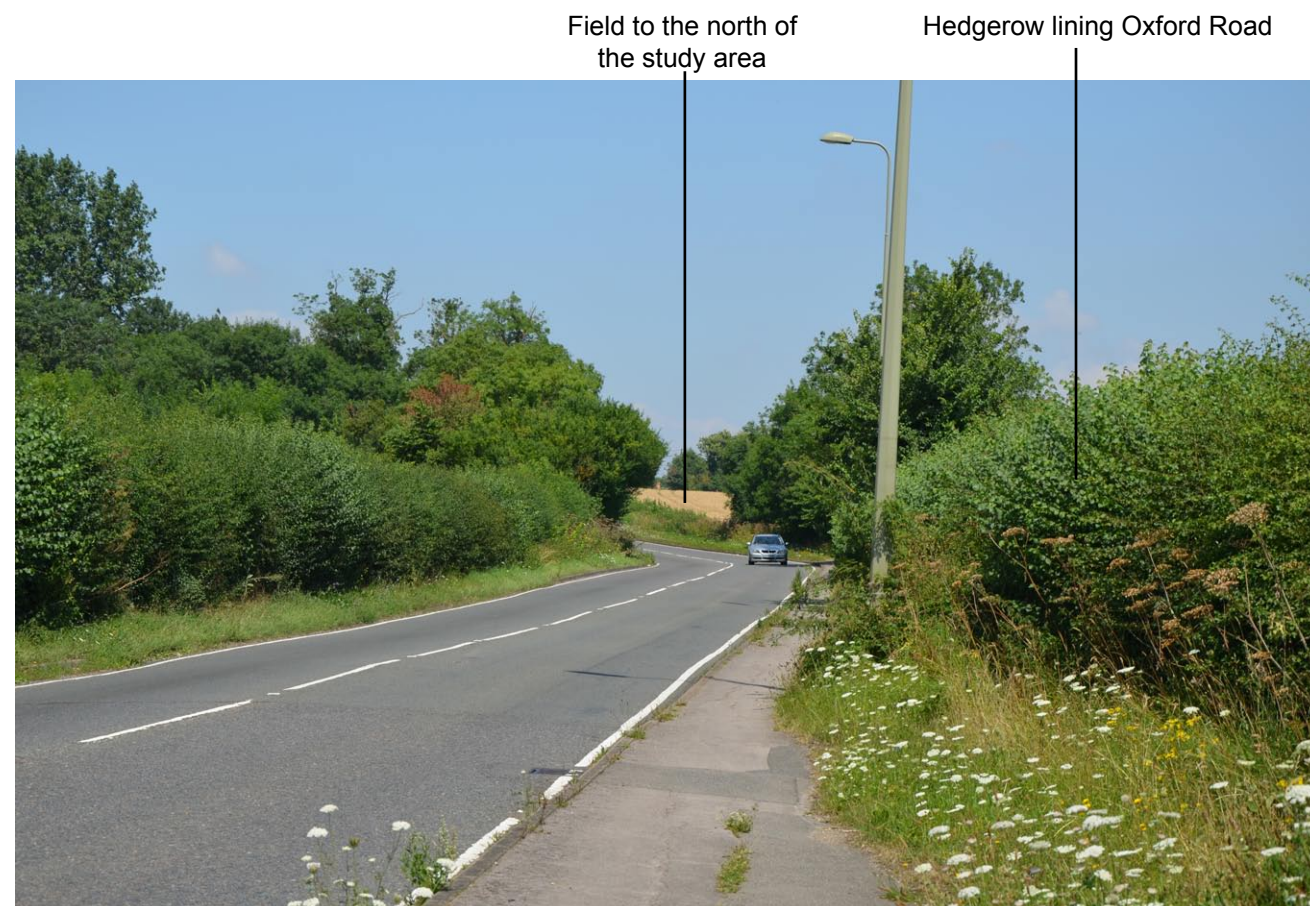
Oxford Road

Hedgerow lining Oxford Road

Avenue lining Oxford
Greenbelt Way



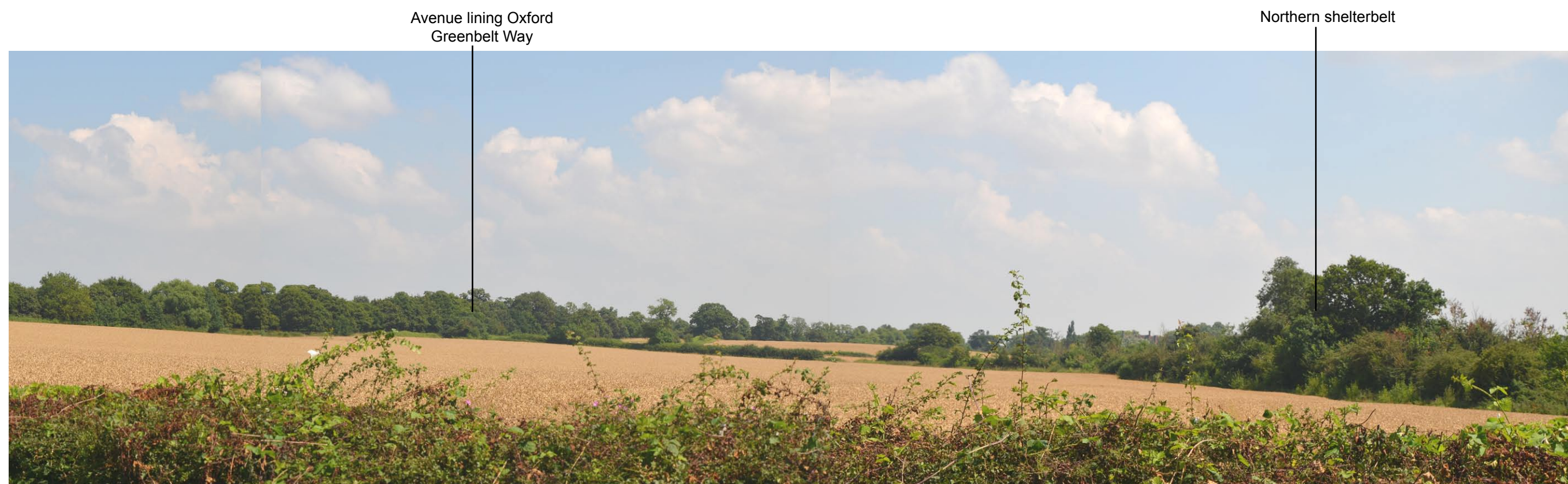
Photograph 4: View east from Oxford Road, on the slope of Lodge Hill



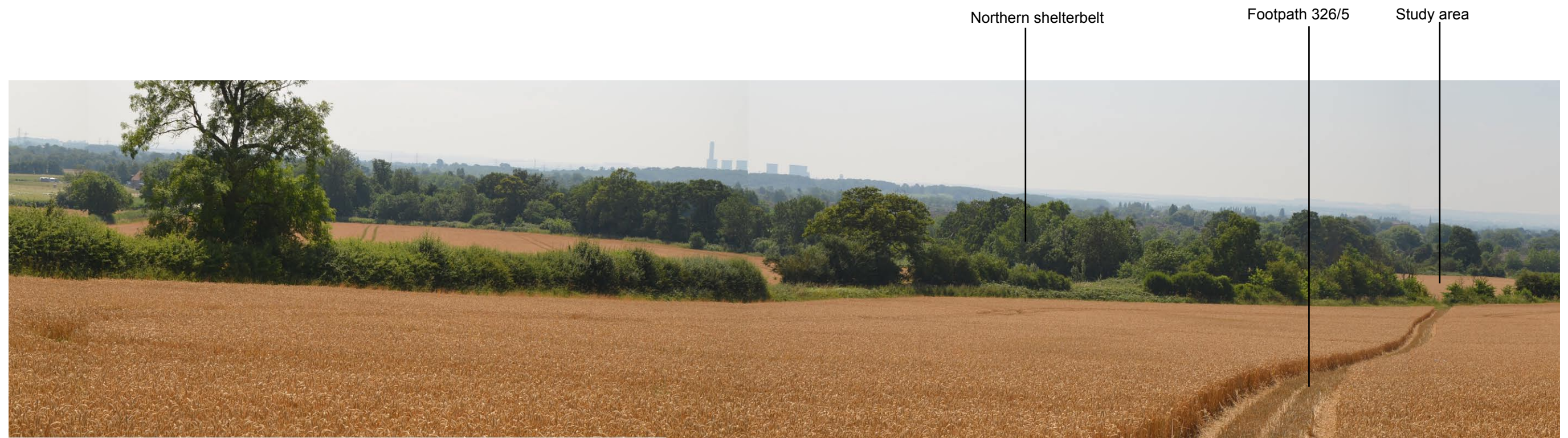
Photograph 5: View north up Oxford Road. Roadside vegetation blocks views of the study area



Photograph 6: View south down Oxford Road. Roadside vegetation blocks views of the study area



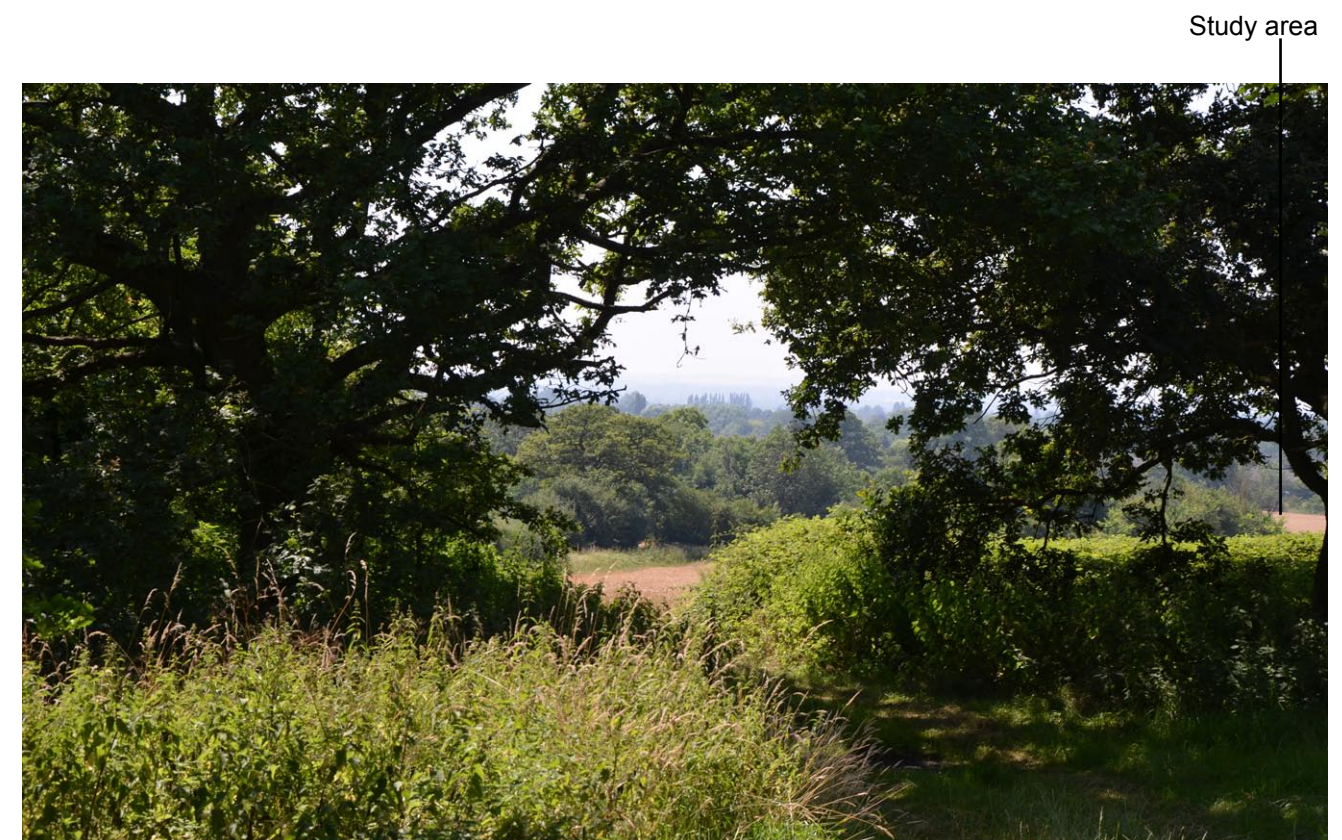
Photograph 4 continued.



Photograph 7: View south from the top of footpath 326/5



Photograph 8: Looking south from the western end of Oxford Greenbelt Way



Photograph 9: View south from Oxford Greenbelt Way



Photograph 7 continued.



Photograph 10: View south from Oxford Greenbelt Way. There are no views of the study area from this location



Photograph 11: View south from Oxford Greenbelt Way



Photograph 12: Looking east from the western end of Oxford Greenbelt Way



Photograph 13: Looking east along Oxford Greenbelt Way

Radley College



Photograph 14: View south from the Oxford Greenbelt Way, within the golf course at Radley College. No views of the study area are possible.

Radley College



Photograph 15: View south from the Oxford Greenbelt Way, within Radley College. No views of the study area are possible.



Photograph 16: View south from the Oxford Greenbelt Way, within the golf course at Radley College. No views of the study area are possible.

Peach Croft Farm is located
behind the shelterbelt

Radley College



Photograph 17: Looking west towards the study area from footpath 326/8. No views of the study area are possible.

Peach Croft Farm



Photograph 18: Looking west towards the study area from Whites Lane. No views of the study area are possible.

Radley



Photograph 17 continued: