

VALE OF WHITE HORSE DISTRICT COUNCIL
LOCAL PLAN PART 1 EXAMINATION HEARING
SUMMARY NOTE ON CHANGES
TO THE OXFORD GREEN BELT

VoWHDC SUMMARY BULLET POINTS

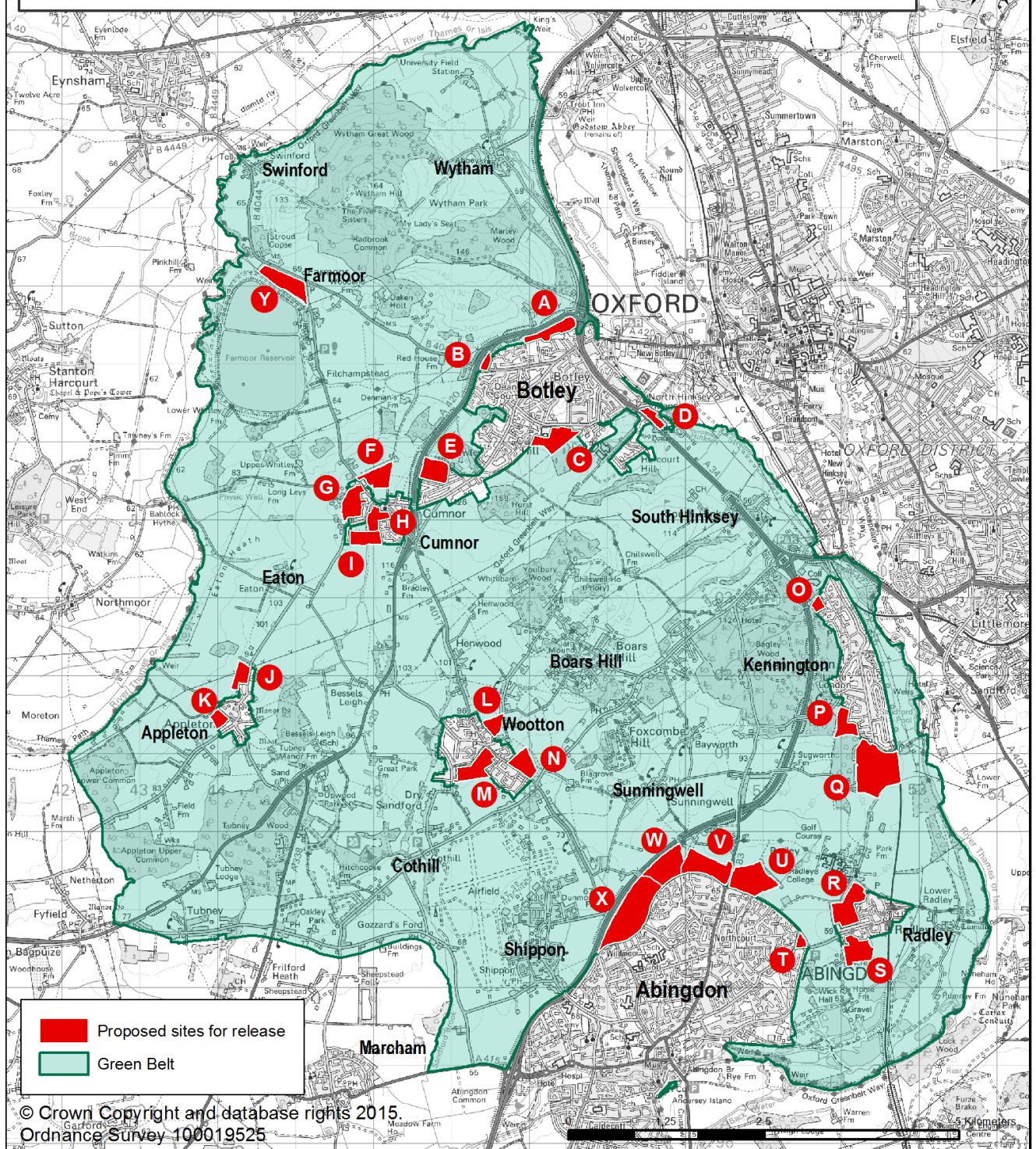
1. At the Vale of White Horse Local Plan Part 1 Examination Hearing Sessions for Matter 1 and Matter 4 from Tuesday 22 September 2015 to Wednesday 23 September 2015 matters relating to the Oxford Green Belt were discussed.
2. The Inspector has asked the Vale of White Horse District Council to provide a note which identifies the sites proposed for release from the Green Belt. In acknowledgement of these concerns, the Council has prepared this note.
3. Changes to the Oxford Green Belt boundary are listed in **Table 1**. A visual representation of the sites released from the Green Belt is set out in **Appendix A**.

Table 1 – Sites recommended for release from the Oxford Green Belt in the Vale

Settlement	Land Parcel	Size of land parcel (ha)	Sub-Area
Botley	A	8.18	Abingdon and Oxford-Fringe
	B	1.92	
	C	10.79	
	D	3.45	
Cumnor	E	9.19	
	F	8.89	
	G	9.54	
	H	5.48	
	I	6.79	
Appleton	J	5.35	
	K	3.42	
Wootton	L	4.62	
	M	10.95	
	N	7.91	
Kennington	O	2.2	
	P	7.17	
	Q	31.08	
Radley	R	13.84	
	S	10.57	
Abingdon	T	1.88	
	U	17.64	
	V	15.56	
	W	14.91	
	X	32.39	
Farmoor	Y	12.71	

Appendix A: Vale of White Horse District Green Belt Location Map

Sites proposed for release from the Oxford Green Belt



Appendix B: Vale of White Horse District Green Belt Location Map

Sites proposed for release from the Oxford Green Belt and
Proposed Strategic Housing Allocations

