

This drawing may contain: Ordnance Survey material by permission of Ordnance Survey on behalf of the Controller of Her Majesty's Stationery Office © Crown Copyright, All rights reserved. 2013  
Reference number 0100031673.

OS Open data / © Natural England / © DEFRA / © DECC / © English Heritage.  
Contains Ordnance Survey data © Crown copyright and database right 2013 |  
Aerial Photography - Esri

No dimensions are to be scaled from this drawing.  
All dimensions are to be checked on site.  
Area measurements for indicative purposes only.  
© LDA Design Consulting LLP. Quality Assured to BSĒN ISO 9001 : 2008

Sources: BSG Ecology survey data

PROJECT TITLE

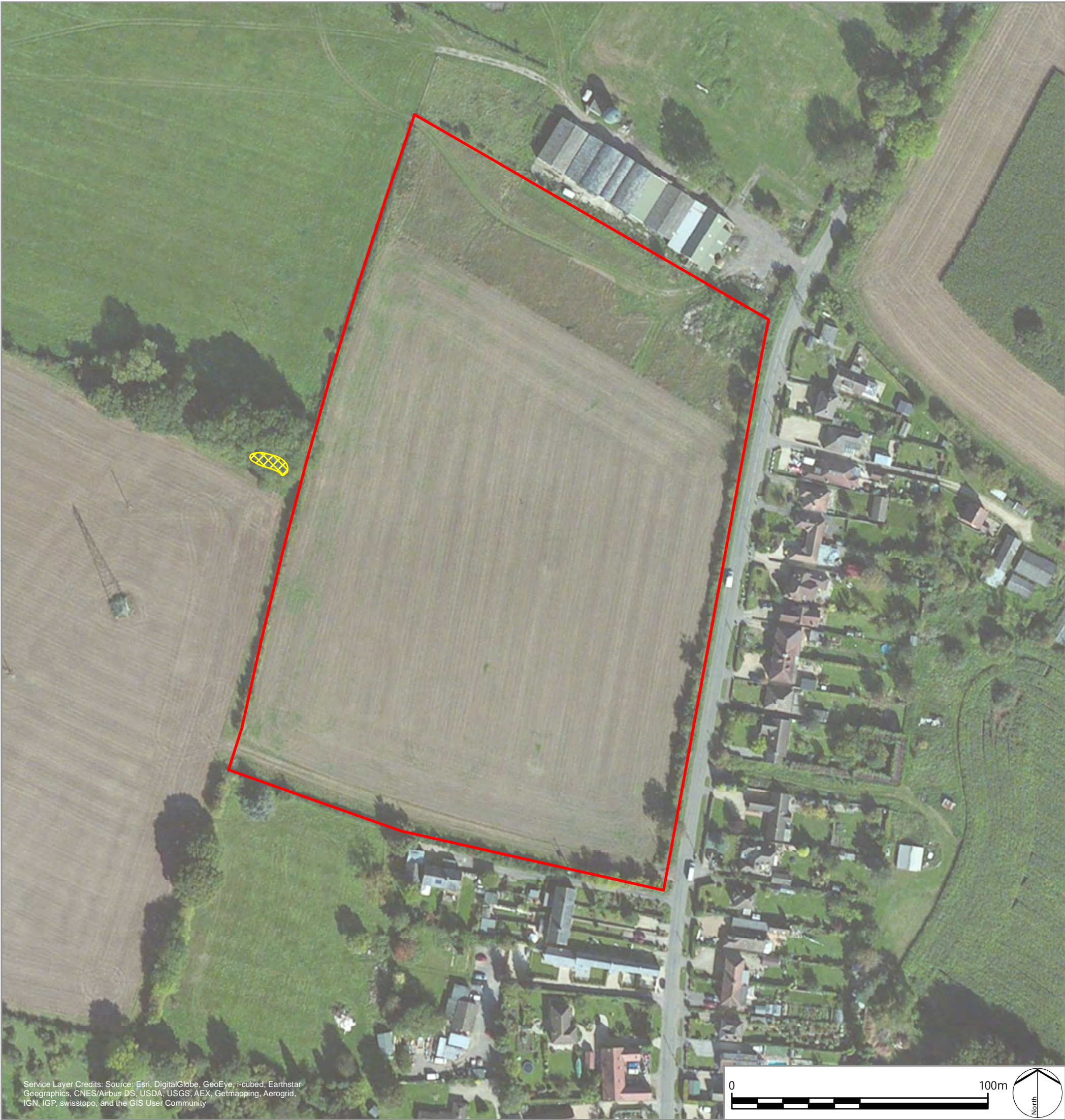
APPLETON

DRAWING TITLE

Figure 3: Location of badger sett  
(CONFIDENTIAL)

ISSUED BY	Oxford	T: 01865 887 050
DATE	05 Dec 2014	DRAWN COH
SCALE @A3	1:1,500	CHECKED JB
STATUS	Final	APPROVED PS

DWG. NO. 4293\_Ecology\_0003



LEGEND

- Site boundary
- Location of badger sett