

# **VALE OF WHITE HORSE DISTRICT COUNCIL**

## **(CIVIL ENFORCEMENT OFF-STREET PARKING PLACES)(NO.1) ORDER 2022**

The Vale of White Horse District Council ("the Council") in exercise of its powers under Sections 32, 33(4) and 35 of the Road Traffic Regulation Act 1984 ("the Act") and Part IV of Schedule 9 of the Act, the Traffic Management Act 2004 and of all other enabling powers; with the consent of Oxfordshire County Council in accordance with Section 39(3) of the Act and after consultation with the Chief Officer of Police in accordance with Part III of Schedule 9 of the Act, hereby makes the following Order:-

### **PART I**

### **GENERAL**

#### **1. Commencement**

This order shall come into operation on the 1<sup>st</sup> November 2022 and shall be cited as The Vale of White Horse District Council (Civil Enforcement Off-Street Parking Places)(No.1) Order 2022.

#### **2. Interpretation**

- (1) Any reference in this Order to a numbered Article is a reference to the Article bearing that number in this Order and any reference in this Order to a Schedule is a reference to the Schedule of Charges to this Order.
- (2) In this Order –
  - "Civil Enforcement Officer" shall have the same meaning as in Section 76 of the Traffic Management Act 2004;
  - "charge" means a charge payable as set out in Article 4 below;
  - "charging period" means any period specified in columns 5 and 7 of the Schedule in respect of which a charge is specified in Article 4;
  - "disabled person's badge" has the same meaning as in The Disabled Persons (Badges for Motor Vehicles)(England)Regulation 2000;
  - "disabled person's parking space" means any area of a parking place which is provided for the leaving of a vehicle driven by or for disabled person, and indicated by markings on the surface of the parking place;
  - "disabled person's vehicle" has the same meaning as in The Local Authorities' Traffic Orders (Exemption for Disabled Persons)(England)Regulation 2000;
  - "driver" in relation to a vehicle waiting in a parking place, means the person driving the vehicle at the time it was left in the parking place;
  - "electric vehicle" means for the purposes of this order, a vehicle which requires an external means of charging;
  - "electric vehicle recharge bay" means a space marked for the charging of vehicles which require an external means of charging, and indicated by markings on the surface of the parking place and signage;
  - "penalty charge" has the same meaning as in the Civil Enforcement of Parking Contraventions (England) General Regulation 2007;

"Penalty Charge Notice" has the same meaning as in the Civil Enforcement of Parking Contraventions (England) General Regulations 2007;  
 "invalid parking ticket" shall have the meaning assigned to it in Article 5(4) below;  
 "market trader permit" shall have the meaning assigned to it in Article 4(7) below;  
 "motor cycle" shall have the meaning assigned to it by Section 136(4) of the Act;  
 "motor cycle parking space" means any area of a parking place which is provided for the parking of a motor cycle and indicated by markings on the surface of the parking place;  
 "motor vehicle" shall have the meaning assigned to it by Section 136(1) of the Act;  
 "owner" in relation to a vehicle means the person by whom such a vehicle is kept and used and who is recorded as the registered keeper by the Driver and Vehicle Licensing Agency and shall include any person who falls to be treated as the owner of the vehicle by virtue of Regulation 5(3) of the Civil Enforcement of Parking Contraventions (England) General Regulations 2007;  
 "parking space" means any area of a parking place which is provided for the leaving of a vehicle and indicated by markings on the surface of the parking place;  
 "parking permit" shall have the meaning given to it in Article 4(6) below;  
 "parking place" means any area of land specified by name in column 1 of the Schedule provided by the Council under Section 32(1) of the Act for use as a parking place;  
 "permitted period" shall have the meaning set out in column 5 of the Schedule;  
 "Schedule" shall mean the Schedule attached to this Order;  
 "trailer" shall have the meaning assigned to it by Section 136(1) of the Act;  
 "valid parking ticket" shall mean a ticket or parking permit issued for the period during which the vehicle is parked in that parking place;  
 "vehicle" shall mean a motor vehicle, electric vehicle, disabled person's vehicle, motor cycle or trailer as defined in this Article.

## **PART II**

### **USE OF LAND AND PARKING PLACES**

#### **3. Use of land and parking places**

- (1) Each area of land specified by name in column 1 of the Schedule and shown on the attached plans may be used, subject to the following provisions of this Order, as a parking place for such classes of vehicles, for such purposes, in such positions, on such days, and during such hours as are specified in relation to that area in the Schedule of this Order.
- (2) Where in the Schedule a parking place is described as available for vehicles of a specified class or in a specified position or for a specified purpose, the driver of a vehicle shall not permit it to wait in that parking place or parking space unless it is of the class of vehicle and in the position so specified or for the purpose so specified.
- (3) Insofar as a vehicle is left in a parking place during the charging period, the driver of it shall immediately pay such charge or charges as are specified in the provisions of this Order.
- (4) Insofar as a vehicle is left in a parking place during the charging period, the driver of it shall immediately display a valid parking ticket during a charging period even if a charge has not become payable in accordance with 7a and 7b of the Schedule, unless payment in accordance with 7a and 7b of the Schedule has



been made by telephone or other electronic means where a physical ticket is not provided.

- (5) Insofar as a driver is required to display a ticket in a parking place for which no charge is made, the driver of it shall immediately display a valid parking ticket where the means to display a ticket are provided.
- (6) Insofar as a vehicle is parked in a parking place for which a parking permit has been provided by the Council, the driver of that vehicle shall immediately display a valid permit for the duration that the vehicle is parked in that parking place under the terms of the parking permit;
- (7) On expiry of the maximum period that a vehicle may wait, as set out in column 5 of the Schedule, the driver shall not return the vehicle to that parking place within the no return period as set out in column 6 of the Schedule.
- (8) Where a person has parked a vehicle in a parking place for up to one hour and for no charge, no person shall be permitted to park the vehicle in that same parking place within one hour of removing that vehicle from the parking place, without paying one of the charges referred to in column 7a of the Schedule.
- (9) Where a person has parked a vehicle in a parking place for up to one hour and for no charge, no person shall be permitted to park the vehicle in another parking place within one hours of removing that vehicle from the parking place, without paying one of the charges referred to in column 7a of the Schedule.
- (10) For the purpose of Article (8) above, the phrase "another parking place" shall mean any parking place specified by name in column 1 of the Schedule situated within the towns of Abingdon, Wantage and Faringdon, and provided by the Council under Section 32(1) of the Act.
- (11) The Council shall make provision by the installation of charging points for electric powered vehicles at any parking place and shall make provision to designate parking spaces for use by drivers of electric powered vehicles to charge such a vehicle at a charging point.
- (12) The Council may suspend parking or may suspend the operation of part or all of this Order in respect of any parking space, parking place or part of any parking place thereof. No person shall park in any parking space, parking place or part of any parking place thereof where parking has been suspended unless the written permission of the Council has been granted.
- (13) Nothing in this Order shall prevent the Council from authorising the use of a parking space, or a parking place or part thereof for any other purpose where parking has been suspended in accordance with Article 3(12).

#### **4. Payment of Parking Charges**

- (1) This Article applies to the parking places specified by name in the Schedule.
- (2) The charge for a vehicle left in a parking place during the charging period shall be as set out in columns 7a and 7b of the Schedule.
- (3) The charge referred to in paragraph (2) of this Article shall be paid and a ticket obtained by the insertions into the apparatus or device provided of either:
  - (a) a coin or coins or notes, of appropriate denomination, to the amount of at least the charge;
  - or
  - (b) (if the machine is so constructed or adapted) by contactless payment or any other means of electronic or digital payment;
  - or
  - (c) information required by the apparatus or device at the parking place to make payment for the charge by electronic or digital means;

The apparatus or device being in accordance with the provisions of Section 35(3) of the Act. It may be required to enter prescribed information required by the apparatus or device at the parking place before a ticket can be issued, or before confirmation of your parking can be provided.

- (4) Any valid parking ticket issued on payment of the charge referred to in paragraph (2) of this Article, or otherwise required to be displayed by Article 3(4) above, shall be properly displayed on the inside of the front windscreen of the vehicle in respect of which it was issued so as to be readable from the outside of the vehicle.
- (5) If at any time a vehicle is left in a parking place and no valid parking ticket is exhibited in accordance with Article 4(4) above, or otherwise required to be displayed by Article 3(4) above, it shall be presumed that no charge has been paid, unless it can be verified by the car park inspector that payment has been made by telephone or other electronic means.
- (6) Where indicated in column 7b of the Schedule, the owner of the vehicle, or their representative may, on application to the Council, purchase a parking permit in respect of that vehicle for a charge ascertained by reference to the charge specified in paragraph (2) of the Article, and that parking permit shall be valid in such parking places as are specified thereon during the period for which it is issued.
- (7) Where indicated in column 7b of the Schedule, a market trader, or their representative, may on application to the Council purchase a parking permit for one particular day of the week in respect of their vehicle for a charge ascertained by reference to the charge specified in paragraph (2) of this Article and that parking permit shall be valid in such parking places as are specified thereon during the period for which it is issued.
- (8) No vehicle shall be left in a parking place without a valid parking permit being displayed in accordance with paragraphs 4(6) or 4(7) above or without a ticket being issued in accordance with paragraph 3(4) above being displayed in accordance with paragraph 4(4). The driver of the vehicle remains responsible for the display of the parking ticket at all times. The driver of the vehicle left in a parking place without so displaying a valid parking ticket or valid permit shall have contravened this Order whether or not a valid parking ticket has been purchased or whether or not a payment has been made, unless it can be verified by the car park inspector that payment has been made by telephone or other electronic means.
- (9) The Council may from time to time make provision of any charge by any means it may determine and may make provision by the installation at any parking place of apparatus or device adapted for that purpose. The Council may also make provisions for the payment of any charge by means of a prepaid card and may make arrangements for the issue of prepaid cards:
  - (a) in such denominations; and
  - (b) from such place or places;as it shall determine.
- (10) The Council may from time to time make provision for the driver of a vehicle to obtain a ticket to use a parking place that is not subject to any charge as set out in column 1 of the Schedule and may (a) make that provision by the installation of any apparatus or device it may determine adapted for the purpose of issuing a ticket, and (b) require the driver to display a ticket in accordance with Article 3(5).
- (11) Any valid parking ticket issued on payment of the charge referred to in paragraph (2) of this Article shall not be photocopied or duplicated.



- (12) The applicant for parking permit issued in accordance with paragraphs 4(6) or 4(7) of this Article may apply to the Council for a replacement parking permit for a charge as set out in the Schedule to this order.
- (13) Where a driver returns a vehicle to a parking place within the no return period in contravention of Articles 3(7), 3(8), 3(9) and 3(10) and Article 16 and the driver displays a parking ticket purchased in accordance with Article 4(4) or otherwise displayed in accordance with Article 3(4) during the no return period, the parking ticket will be deemed an invalid parking ticket notwithstanding the display of the parking ticket whether purchased or otherwise displayed.

## **5. Penalty Charge**

- (1) A penalty charge will be payable by the driver or the owner of the vehicle for not complying with the provisions of this car park Order for the use of the car park. These provisions are called parking contraventions and are set out in column 8 of the Schedule to this Order.
- (2) All enforcement of parking contraventions will be carried out by Civil Enforcement Officers.
- (3) Enforcement of penalty charges shall be carried out in accordance with the provisions of the Civil Enforcement of Parking Contraventions (England) General Regulations 2007. The Parking Penalty Enforcement Process is attached to this Order.
- (4) Any appeals and representations following the issue of a Penalty Charge Notice shall be conducted in accordance with the Civil Enforcement of Parking Contraventions (England) Representations and Appeals Regulations 2007. The Parking Penalty Enforcement Process is attached to this Order.
- (5) In the event of a conflict between this car park Order and the Regulations referred to in 5(3) and 5(4), the Regulations will take precedence.

## **6. Alteration of the position and removal of a Penalty Charge Notice**

It shall be an offence under Regulation 11 of the Civil Enforcement of Parking Contraventions (England) General Regulations 2007 for any unauthorised removal or interference with a Penalty Charge Notice, once it has been affixed to a vehicle, liable on summary conviction to a fine not exceeding level 2 on the standard scale.

## **7. Vehicle driven away prior to a Penalty Charge Notice being served**

If the Civil Enforcement Officer's pocket notebook and computer notes confirm that the vehicle drove away after the issue of the Penalty Charge Notice had begun, i.e. whilst details were being noted, but before the Penalty Charge Notice could be served, i.e. handed to the driver or affixed to a vehicle, the Penalty Charge Notice will be served on the owner of the vehicle by post after obtaining the owner details from the Driver and Vehicle Licensing Agency.

## **8. Penalty Charge Rate**

The Penalty Charge Notice rates have been set for Oxfordshire, currently at £70 and £50, dependant on the type of parking contravention committed. The list of contraventions are specified in the Schedule. If paid within 14 days of issue the Penalty Charge Notice rate is discounted by 50% and £35 or £25 (depending on the type of contravention) will be accepted in full settlement.

## **9. Removal of vehicles**

- (1) If a vehicle is left in a parking place in a position other than in accordance with the provisions of Article 3, a person authorised by the Council in that behalf may alter

or cause to be altered the position of the vehicle so that its position is in accordance with the said provisions.

- (2) If a vehicle is left in a parking place in contravention of any of the foregoing provisions of this Order, a person authorised by the Council in that behalf may remove the vehicle from that parking place or arrange for such removal.
- (3) For the purpose of meeting the requirements of an emergency, a person authorised in that behalf by the Council or a police officer in uniform may alter or cause to be altered the position of a vehicle in a parking place or remove or arrange for the removal of a vehicle from a parking place.
- (4) A vehicle can be classed as a persistent evader if there are three or more recorded contraventions for the vehicle and the penalties for these have not been paid, represented against, or appealed against within the statutory time limits, or their representations or appeals have been rejected but they have still not paid. This may be because the vehicle is not properly registered, and the owner is confident that they can avoid paying any penalty charges. When parked in contravention of this order, a persistent evader's vehicle will be subject to the strongest possible enforcement action following the issue of a Penalty Charge Notice and confirmation of persistent evader status. This is likely to involve immobilisation or removal of the vehicle which will not be released until proof of ownership and registered address has been provided.
- (5) Any person (a) altering, or causing the alteration of, the position of a vehicle by virtue paragraphs (2), (3) or (4) of this Article, may do so by towing or driving the vehicle, or in such a manner as he may think reasonably necessary to enable the position of the vehicle to be altered or the vehicle to be removed.
- (6) Any person removing or arranging for the removal of a vehicle by virtue of paragraphs (2), (3) or (4) of this Article shall make such arrangements as he considers to be reasonably necessary for the safety of the vehicle in the place to which it is removed.

#### **10. Liability for Loss**

The Council shall not be liable for any loss or damage to a vehicle or its contents while in a parking place.

#### **11. Vehicles to be parked with engines stopped**

The driver of a vehicle using a parking place shall stop the engine as soon as the vehicle is in position in the parking place and shall not start the engine except when about to change the position of the vehicle in, or to depart from, the parking place.

#### **12. Sounding the horn**

The driver of a vehicle using a parking place shall not sound any horn or other similar instrument except, if necessary when about to change the position of the vehicle in, or about to depart from, the parking place.

#### **13. Restrictions on driving of vehicles in parking places**

Where in a parking place signs are erected, or surface markings are laid for the purpose of:

- (a) Indicating the entrance to or exit from the parking place; or
- (b) Indicating that a vehicle using the parking place shall proceed in a specified direction with the parking place;

no person shall drive or permit to be driven any vehicle (i) so that it enters the parking place otherwise than by an entrance or leaves the parking place otherwise than by an exit, so indicated, or (ii) in a direction other than so specified.



#### **14. No driving around**

No person shall, except with the permission of a person authorised by the Council in that behalf, drive or permit to be driven any vehicle in a parking place for any purpose other than the purpose of leaving that vehicle in the parking place in accordance with the provisions of this Order or for the purpose of departing from the parking place.

#### **15. Speed Limit**

The driver of a vehicle shall not drive the vehicle in excess of 10mph in a parking place.

#### **16. Waiting Period**

The driver of a vehicle shall not permit it to wait in a parking place for longer than the maximum period for waiting, specified in column 5 of the Schedule to this Order in relation to that parking place.

#### **17. Return Period**

Where a vehicle has been removed from a parking space within a parking place, no driver is permitted to park it in that parking place within the no return period as specified in column 6 of the Schedule to this Order.

#### **18. Use of disabled parking spaces**

No person shall leave any vehicle in a disabled person's parking space whether with or without a valid parking ticket unless the vehicle is displaying in the relevant position a disabled person's badge in accordance with Article 22(2) below.

#### **19. Use of motor cycle parking spaces**

No person shall leave a vehicle, which is not a motor cycle, in a motor cycle parking space. A person so leaving a vehicle, which is not a motor cycle in a motor cycle parking space shall be deemed to have left the vehicle not wholly in a parking space as set out in column 8 of this Schedule.

#### **20. Use of electric vehicle recharge bays**

No person shall leave a vehicle in an electrically powered vehicle recharge bay unless the vehicle is being recharged by the apparatus provided for that purpose.

#### **21. Activities prohibited in parking places**

Unless with the prior written consent of the Council, no person shall use any part of a parking place or any vehicle left in a parking place;

- (a) In connection with the sale of any article to persons in or near the parking place; or
- (b) In connection with the selling or offering for hire of skills or services; or
- (c) For sleeping, camping or cooking; or
- (d) For the purpose of servicing or washing any vehicle or part thereof other than is reasonably necessary to enable that vehicle to depart from the parking place; or
- (e) To erect or cause to be erected any tent, booth, stand or building or other structure; or
- (f) To light or cause to be lit any fire.

## **PART III**

### **EXEMPTIONS AND EXCEPTIONS**

#### **22. Exemptions**

- (1) A motor cycle left in a parking place shall be exempt from the payment of any parking charge specified in the Schedule.
- (2) The driver of a vehicle who displays in the relevant position a valid disabled person's badge shall be exempt from any charge specified in any Articles to this Order and shall comply with the time limits as set out in columns 5 and 6 of the Schedule. For the purpose of this Order a vehicle shall be regarded as displaying a valid disabled person's badge in the relevant position when (i) in the case of a vehicle fitted with a front windscreen, the badge is exhibited thereon with the observe side facing forwards on the near side and immediately behind the windscreen; and (ii) in the case of a vehicle not fitted with a front windscreen, the badge is exhibited in a conspicuous position on the front nearside of the vehicle.

#### **23. Exceptions**

- (1) The Council may issue to council employees and District Councillors a permit in respect of each person's designated vehicle and such a permit shall be valid in respect of the designated vehicle for use in a designated parking place during the period for which it is issued, provided that the permit is displayed in the relevant position in accordance with Articles 3(6) and 4(8)

## **PART IV**

### **REVOCATION**

24. The Vale of White Horse District Council (Off-Street Parking Places)(No.1) Order 2021 is hereby revoked.

THE COMMON SEAL of  
VALE OF WHITE HORSE DISTRICT  
COUNCIL was hereunto affixed this  
13<sup>th</sup> day of October 2022  
in the presence of:



Designated Officer



224/22





**District Council**  
135 Eastern Avenue  
Milton Park  
MILTON, OXON  
OX14 4SB

**Client:**  
Vale of White Horse District Council

**Contract:**  
Parking Orders 2022

**Title:**  
Abbey Close Car Park, Abingdon

**Division:**  
Property

**Date:**  
25/10/2021



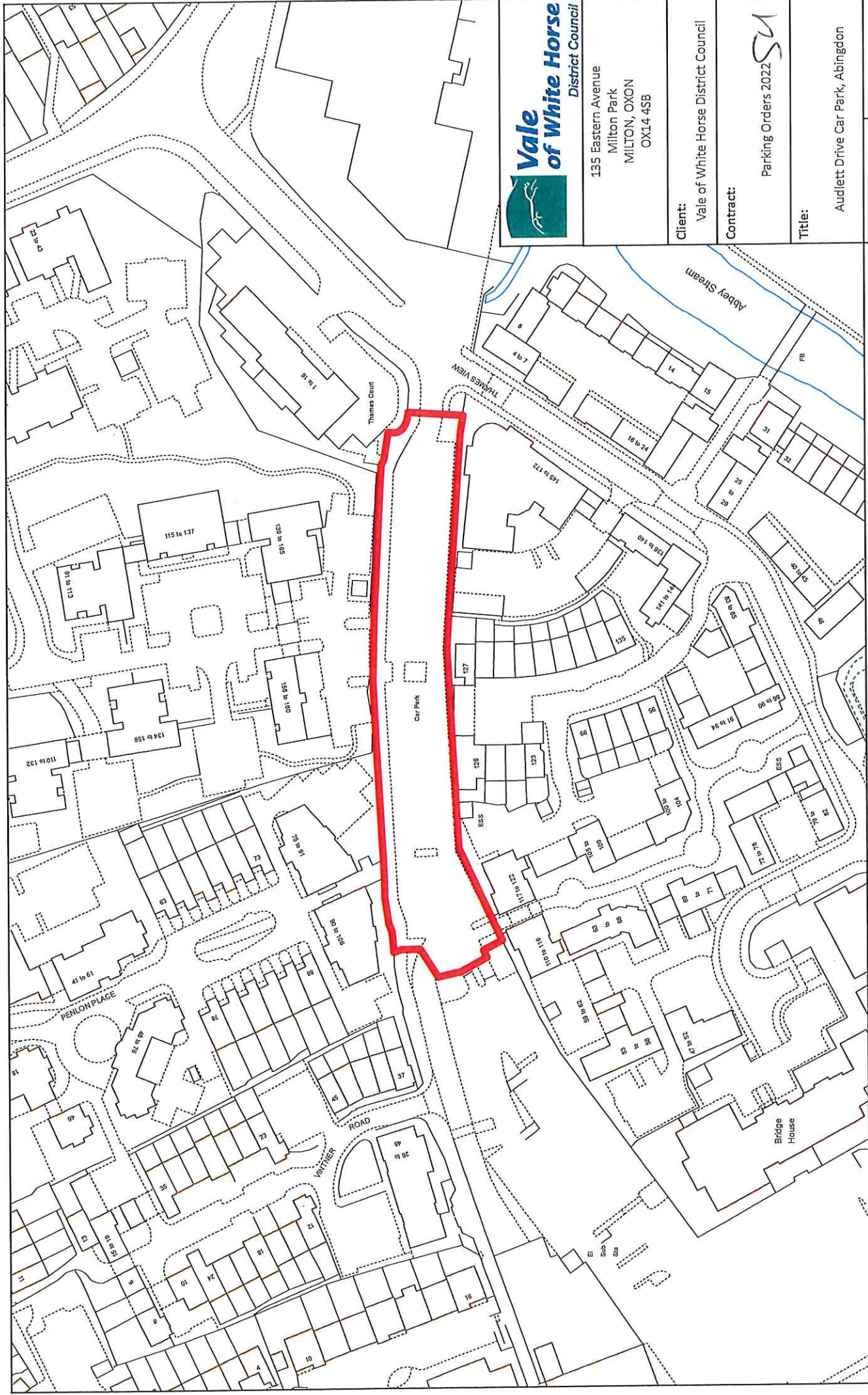
**Scale:**  
1:1,250 at A4

**Drawn by:** GP

**Checked by:**

© Crown copyright and database rights 2021 OS 100019525. You are granted a non-exclusive, royalty free, revocable licence solely to view the Licensed Data for non-commercial purposes for the period during which Vale of White Horse District Council makes it available. You are not permitted to copy, sub-license, distribute, sell or otherwise make available the Licensed Data to third parties in any form. Third party rights to enforce the terms of this licence shall be reserved to OS.





District Council

135 Eastern Avenue  
Milton Park  
MILTON, OXON  
OX14 4SB

**Client:**  
Vale of White Horse District Council

**Contract:**  
Parking Orders 2022 *SM*

**Title:**  
Audlett Drive Car Park, Abingdon

**Date:**  
25/10/2021

**Drawn by:** GP

**Checked by:**



© Crown copyright and database rights 2021 OS 100019525. You are granted a non-exclusive, royalty free, revocable licence solely to view the Licensed Data for non-commercial purposes for the period during which Vale of White Horse District Council makes it available. You are not permitted to copy, sub-license, distribute, sell or otherwise make available the Licensed Data to third parties in any form. Third party rights to enforce the terms of this licence shall be reserved to OS.





**Vale of White Horse**  
District Council

135 Eastern Avenue  
Milton Park  
MILTON, OXON  
OX14 4SB

**Client:**  
Vale of White Horse District Council

**Contract:**  
Parking Orders 2022

**Title:**  
Charter Multi Storey Car Park,  
Abingdon

**Division:**  
Property

**Date:**  
25/10/2021

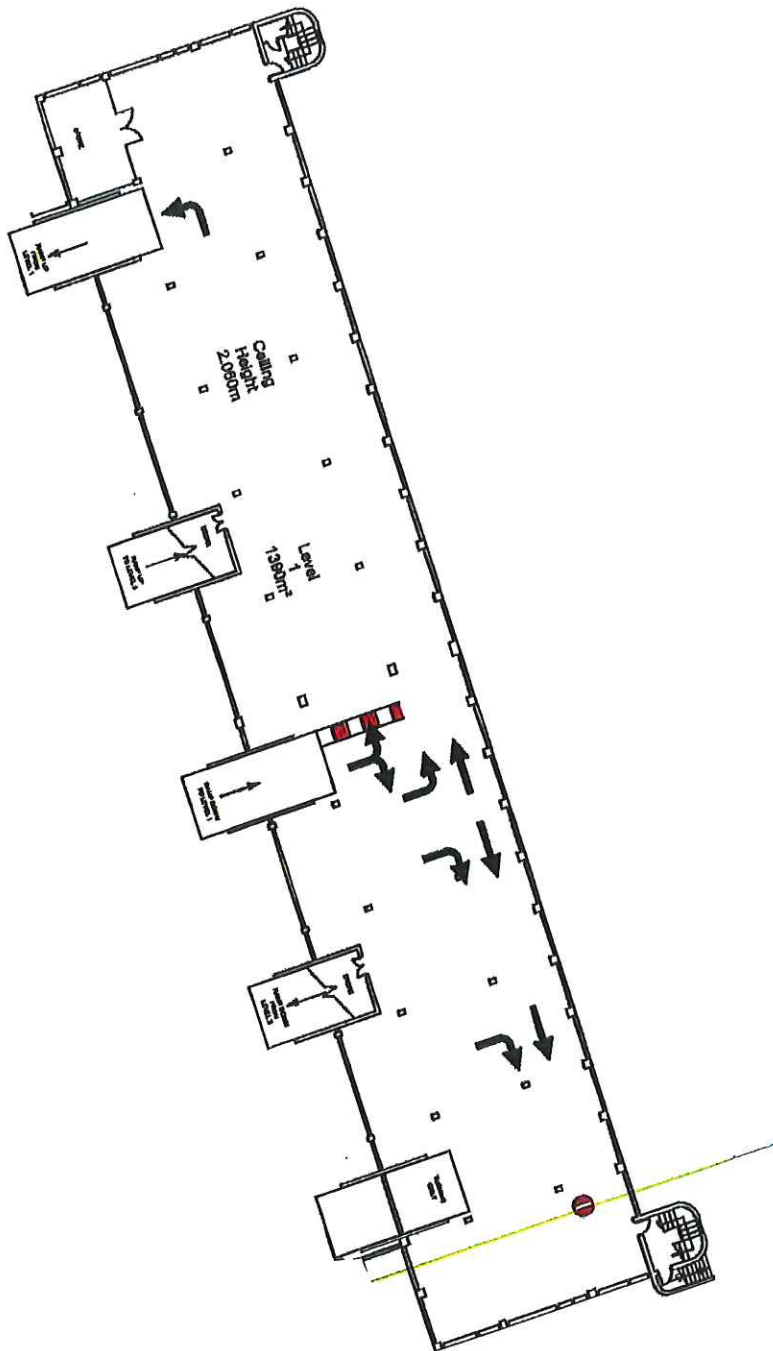
**Scale:**  
1:1,250 at A4

**Drawn by:** GP

**Checked by:**



© Crown copyright and database rights 2021. OS 100019525. You are granted a non-exclusive, royalty free, revocable licence solely to view the Licensed Data for non-commercial purposes for the period during which Vale of White Horse District Council makes it available. You are not permitted to copy, sub-licence, distribute, sell or otherwise make available the Licensed Data to third parties in any form. Third party rights to enforce the terms of this licence shall be reserved to OS.



S4



135 Eastern Avenue  
Milton Park  
MILTON, OXON  
OX14 4SB

Client:  
Vale of White Horse District Council

Contract:  
  
Parking Orders 2022

Title:  
Charter Multi Storey Car Park,  
Abingdon  
Level 1

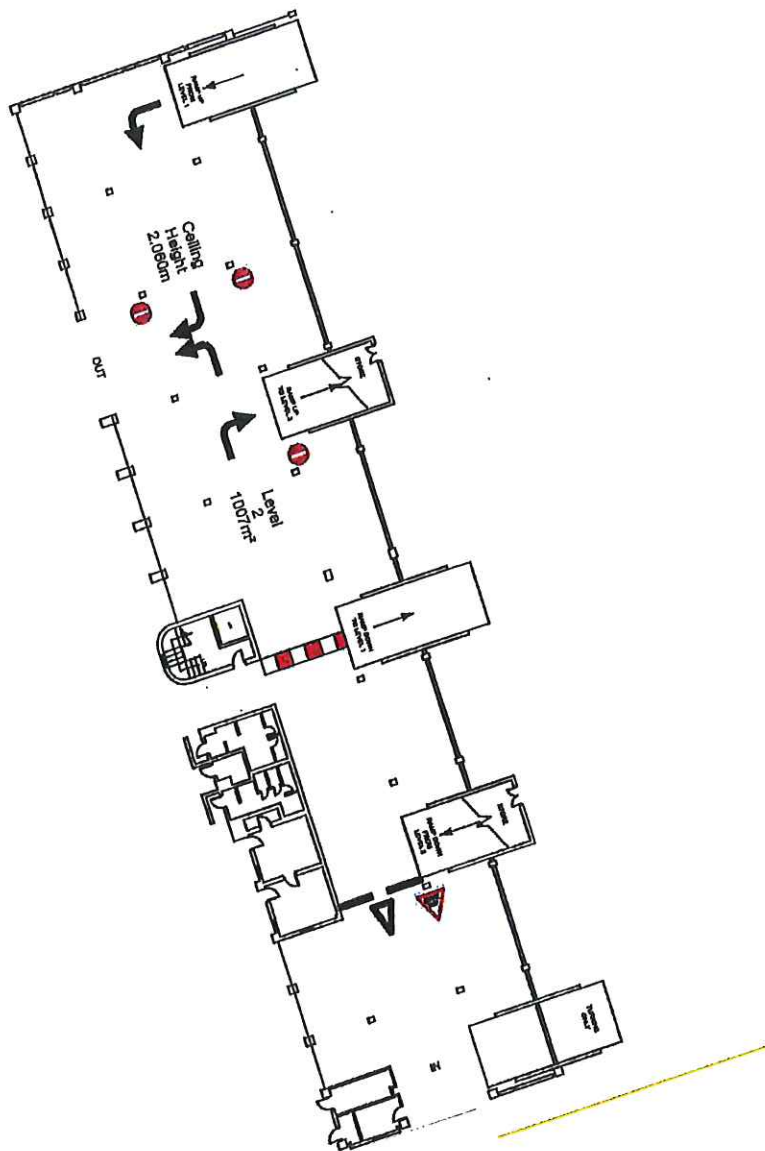
Division: Property	Date: 25/10/2021
-----------------------	---------------------

Scale: 1:500 at A4	Drawn by: GP Checked by:
-----------------------	-----------------------------

© Crown copyright and database rights 2021 OS 100019525. You are granted a non-exclusive, royalty free, revocable licence solely to view the Licensed Data for non-commercial purposes for the period during which Vale of White Horse District Council makes it available. You are not permitted to copy, sub-license, distribute, sell or otherwise make available the Licensed Data to third parties in any form. Third party rights to enforce the terms of this licence shall be reserved to OS.







SW



135 Eastern Avenue  
Milton Park  
MILTON, OXON  
OX14 4SB

Client:  
Vale of White Horse District Council

Contract:  
  
Parking Orders 2022

Title:  
Charter Multi Storey Car Park,  
Abingdon  
Level 2

Division:  
Property

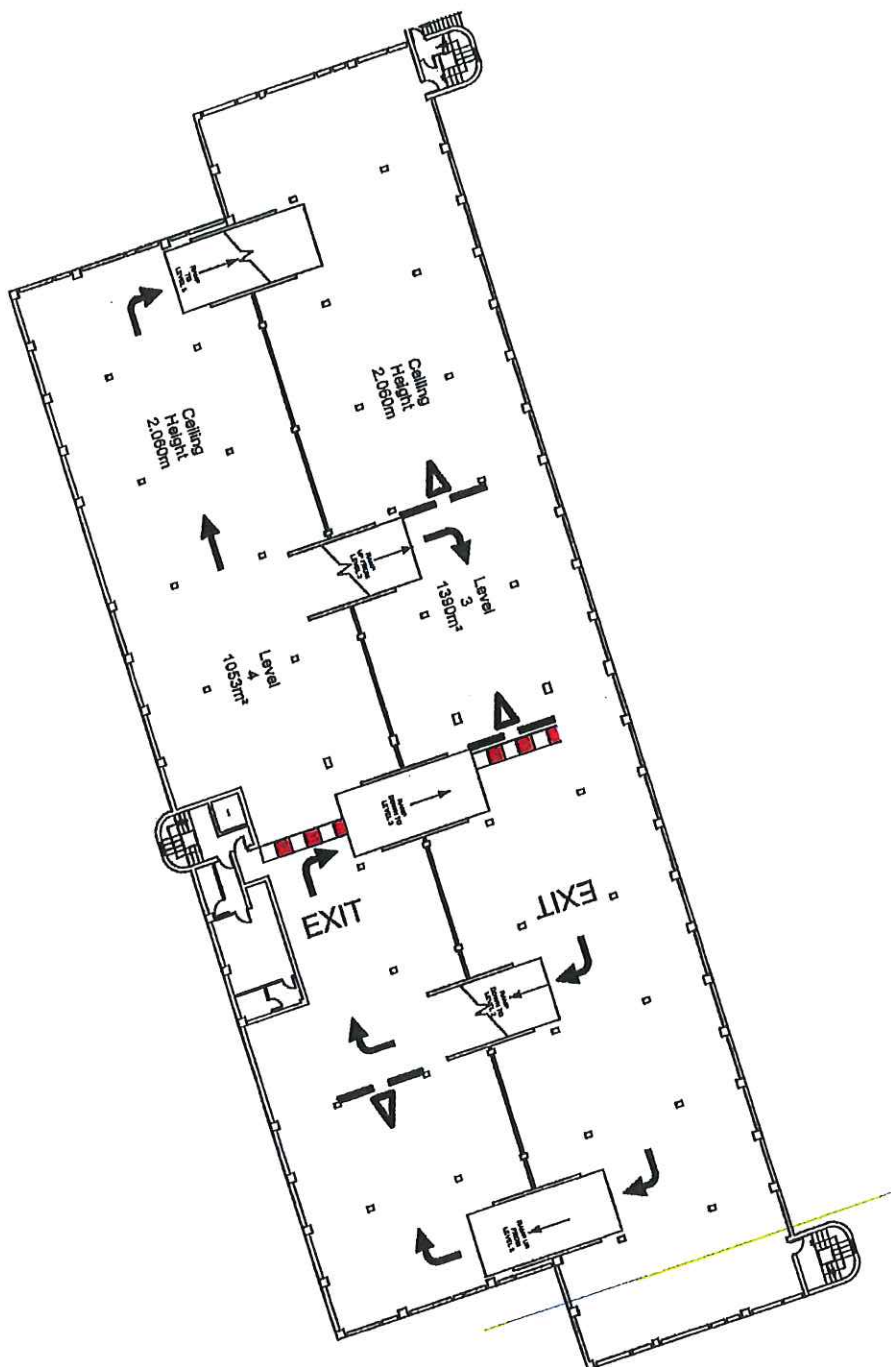
Date:  
25/10/2021

Scale:  
1:500 at A4

Drawn by: GP  
Checked by:

© Crown copyright and database rights 2021 OS 100019525. You are granted a non-exclusive, royalty free, revocable licence solely to view the Licensed Data for non-commercial purposes for the period during which Vale of White Horse District Council makes it available. You are not permitted to copy, sub-license, distribute, sell or otherwise make available the Licensed Data to third parties in any form. Third party rights to enforce the terms of this licence shall be reserved to OS.





SW



135 Eastern Avenue  
Milton Park  
MILTON, OXON  
OX14 4SB

Client:  
Vale of White Horse District Council

Contract:  
Parking Orders 2022

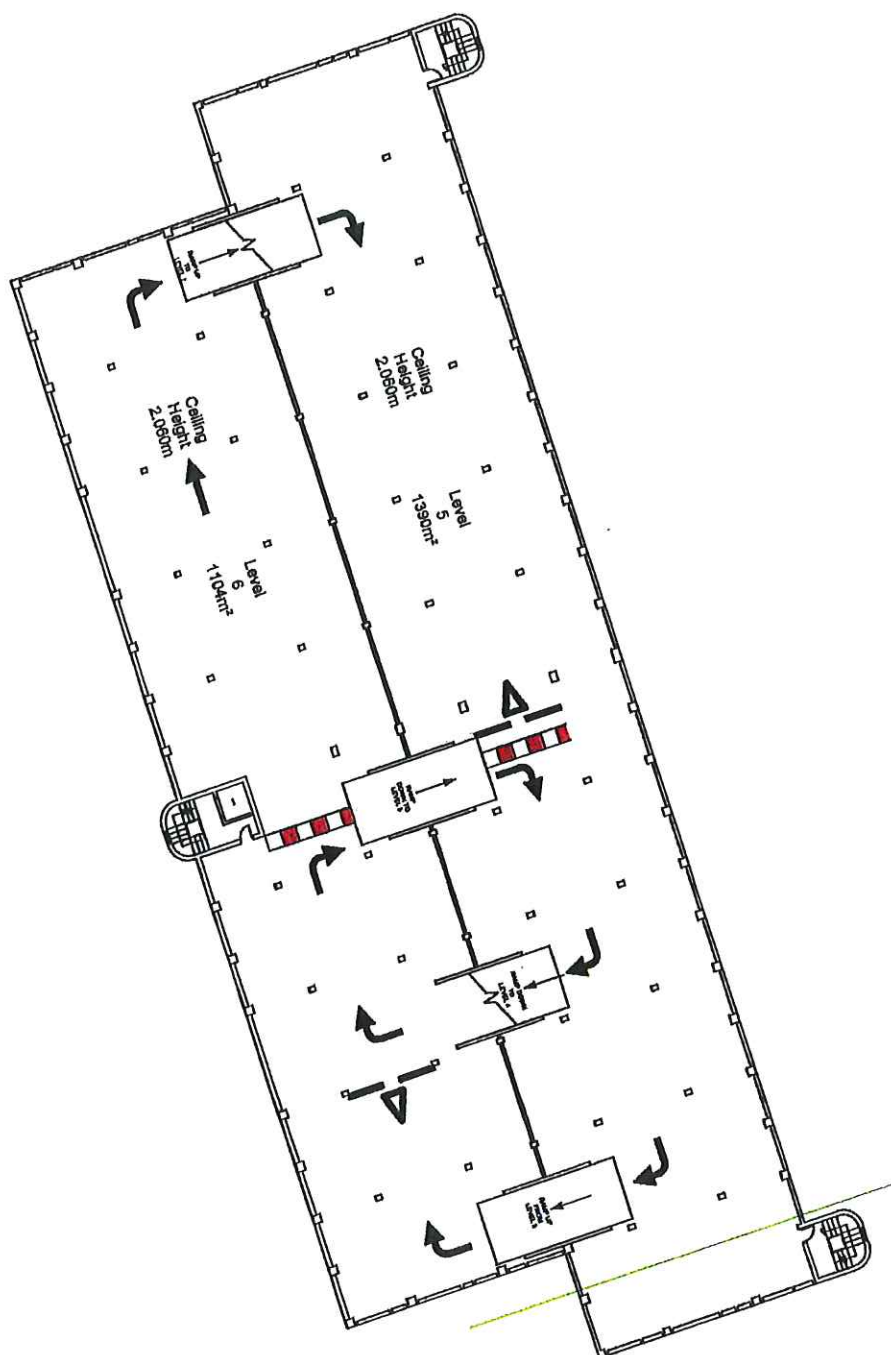
Title:  
Charter Multi Storey Car Park,  
Abingdon  
Level 3 & 4

Division: Property	Date: 25/10/2021
-----------------------	---------------------

Scale: 1:500 at A4	Drawn by: GP Checked by:
-----------------------	-----------------------------

© Crown copyright and database rights 2021 OS 100019525. You are granted a non-exclusive, royalty free, revocable licence solely to view the Licensed Data for non-commercial purposes for the period during which Vale of White Horse District Council makes it available. You are not permitted to copy, sub-license, distribute, sell or otherwise make available the Licensed Data to third parties in any form. Third party rights to enforce the terms of this licence shall be reserved to OS.





50



135 Eastern Avenue  
Milton Park  
MILTON, OXON  
OX14 4SB

**Client:**  
Vale of White Horse District Council

**Contract:**  
Parking Orders 2022

**Title:** Charter Multi Storey Car Park,  
Abingdon  
Level 5 & 6

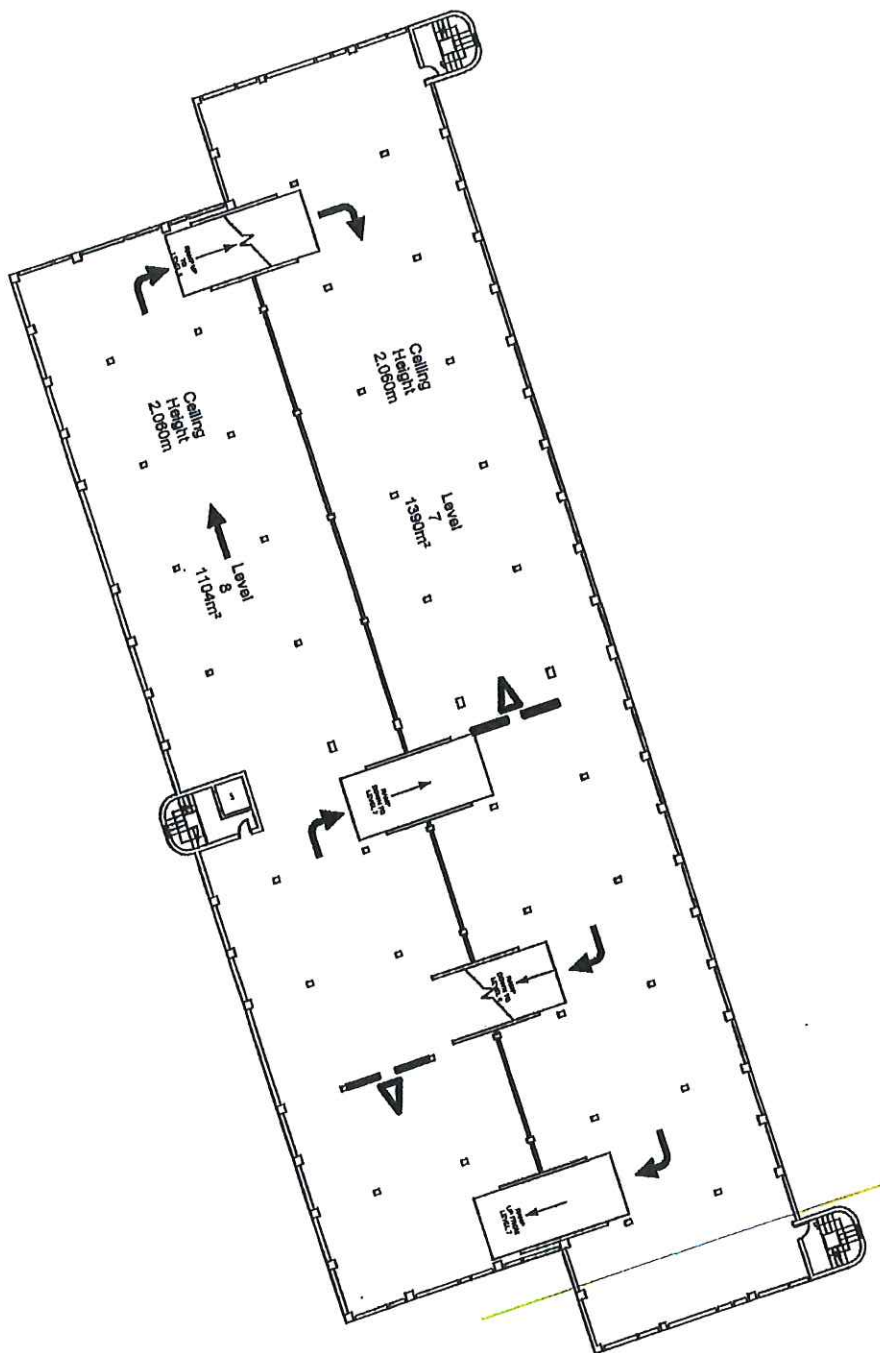
<b>Division:</b> Property	<b>Date:</b> 25/10/2021
------------------------------	----------------------------

<b>Scale:</b> 1:500 at A4	<b>Drawn by:</b> GP <b>Checked by:</b>
------------------------------	---

© Crown copyright and database rights 2021 OS 100019525. You are granted a non-exclusive, royalty free, revocable licence solely to view the Licensed Data for non-commercial purposes for the period during which Vale of White Horse District Council makes it available. You are not permitted to copy, sub-license, distribute, sell or otherwise make available the Licensed Data to third parties in any form. Third party rights to enforce the terms of this licence shall be reserved to OS.







SN



135 Eastern Avenue  
Milton Park  
MILTON, OXON  
OX14 4SB

**Client:**  
Vale of White Horse District Council

**Contract:**  
Parking Orders 2022

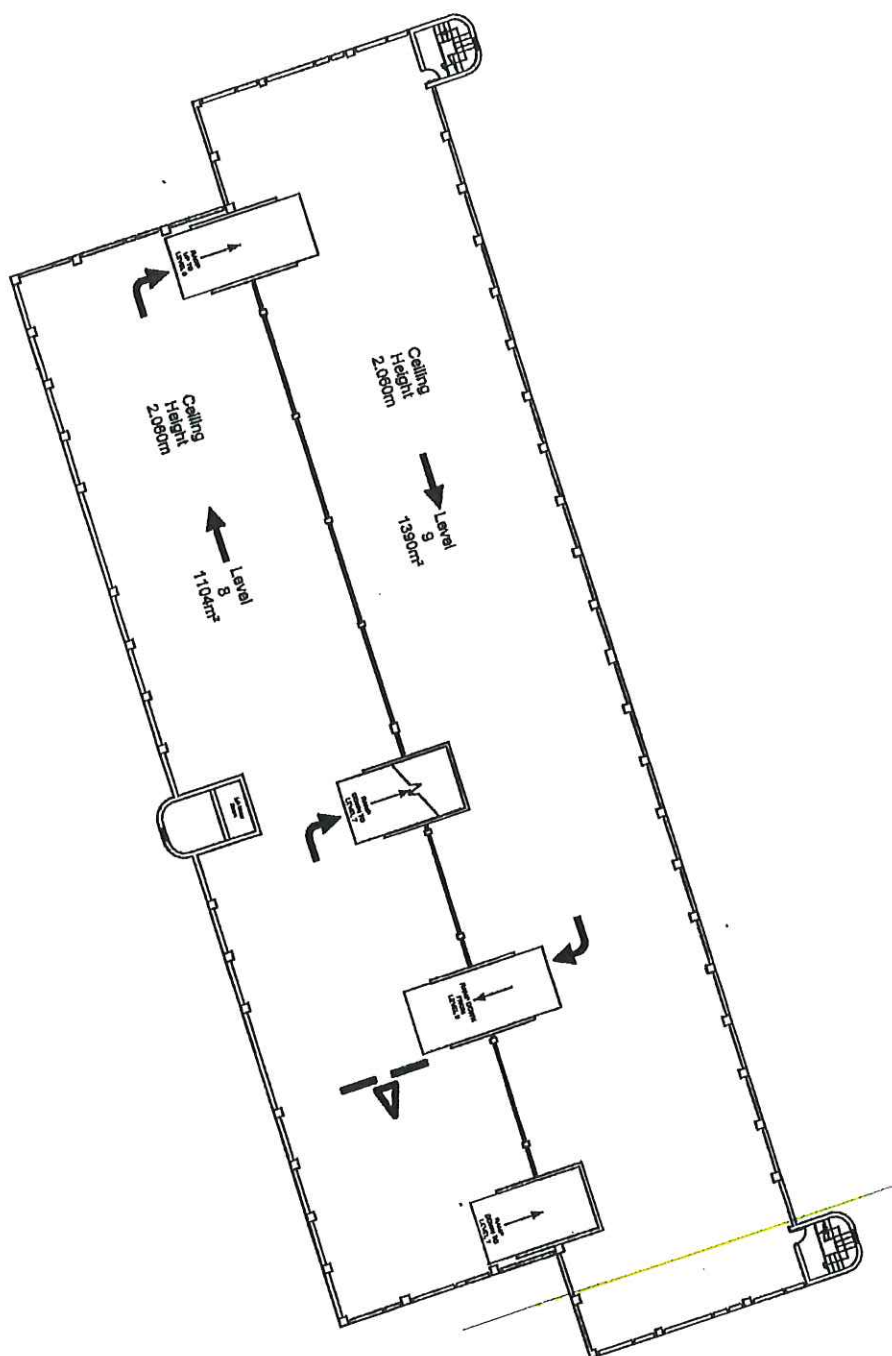
**Title:**  
Charter Multi Storey Car Park,  
Abingdon  
Level 7 & 8

<b>Division:</b> Property	<b>Date:</b> 25/10/2021
------------------------------	----------------------------

<b>Scale:</b> 1:500 at A4	<b>Drawn by:</b> GP <b>Checked by:</b>
------------------------------	---

© Crown copyright and database rights 2021 OS 100019525. You are granted a non-exclusive, royalty free, revocable licence solely to view the Licensed Data for non-commercial purposes for the period during which Vale of White Horse District Council makes it available. You are not permitted to copy, sub-license, distribute, sell or otherwise make available the Licensed Data to third parties in any form. Third party rights to enforce the terms of this licence shall be reserved to OS.





135 Eastern Avenue  
Milton Park  
MILTON, OXON  
OX14 4SB

**Client:**  
Vale of White Horse District Council

**Contract:**  
Parking Orders 2022

**Title:**  
Charter Multi Storey Car Park,  
Abingdon  
Level 8 & 9

**Division:** Property  
**Date:** 25/10/2021

**Scale:** 1:500 at A4  
**Drawn by:** GP  
**Checked by:**

© Crown copyright and database rights 2021 OS 100019525. You are granted a non-exclusive, royalty free, revocable licence solely to view the Licensed Data for non-commercial purposes for the period during which Vale of White Horse District Council makes it available. You are not permitted to copy, sub-license, distribute, sell or otherwise make available the Licensed Data to third parties in any form. Third party rights to enforce the terms of this licence shall be reserved to OS.







**Vale of White Horse**  
District Council  
135 Eastern Avenue  
Milton Park  
MILTON, OXON  
OX14 4SB

SA

<b>Client:</b>	Vale of White Horse District Council
<b>Contract:</b>	Parking Orders 2022
<b>Title:</b>	West St Helen Street Car Park, Abingdon
<b>Division:</b>	Property
<b>Date:</b>	25/10/2021
<b>Scale:</b>	1:1,250 at A4
<b>Drawn by:</b>	GP
<b>Checked by:</b>	



© Crown copyright and database rights 2021 OS 100019525. You are granted a non-exclusive, royalty free, revocable licence solely to view the Licensed Data for non-commercial purposes for the period during which Vale of White Horse District Council makes it available. You are not permitted to copy, sub-license, distribute, sell or otherwise make available the Licensed Data to third parties in any form. Third party rights to enforce the terms of this licence shall be reserved to OS.





**Vale of White Horse**  
District Council  
135 Eastern Avenue  
Milton Park  
MILTON, OXON  
OX14 4SB

**Client:**  
Vale of White Horse District Council

**Contract:**  
Parking Orders 2022

**Title:**  
Civic Car Park &  
Service Bay Car Park, Abingdon

**Division:**  
Property

**Date:**  
25/10/2021

**Scale:**  
1:1,250 at A4

**Drawn by:**  
GP

**Checked by:**



© Crown copyright and database rights 2021 OS 100019525. You are granted a non-exclusive, royalty free, revocable licence solely to view the Licensed Data for non-commercial purposes for the period during which Vale of White Horse District Council makes it available. You are not permitted to copy, sub-license, distribute, sell or otherwise make available the Licensed Data to third parties in any form. Third party rights to enforce the terms of this licence shall be reserved to OS.





Abbey Gardens



135 Eastern Avenue  
Milton Park  
MILTON, OXON  
OX14 4SB

SA

**Client:**  
Vale of White Horse District Council

**Contract:**  
Parking Orders 2022

**Title:**  
Cattle Market, Abingdon

**Division:**  
Property

**Date:**  
25/10/2021



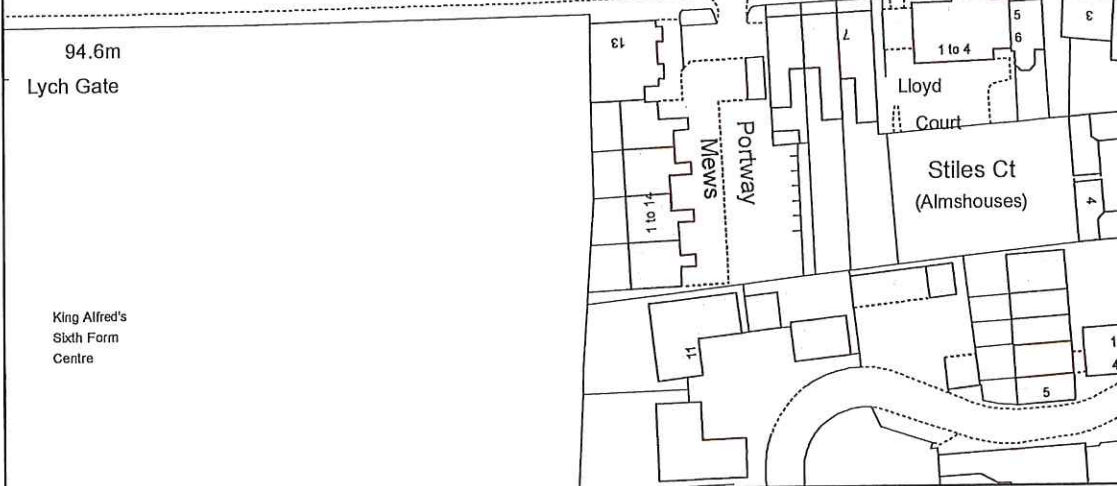
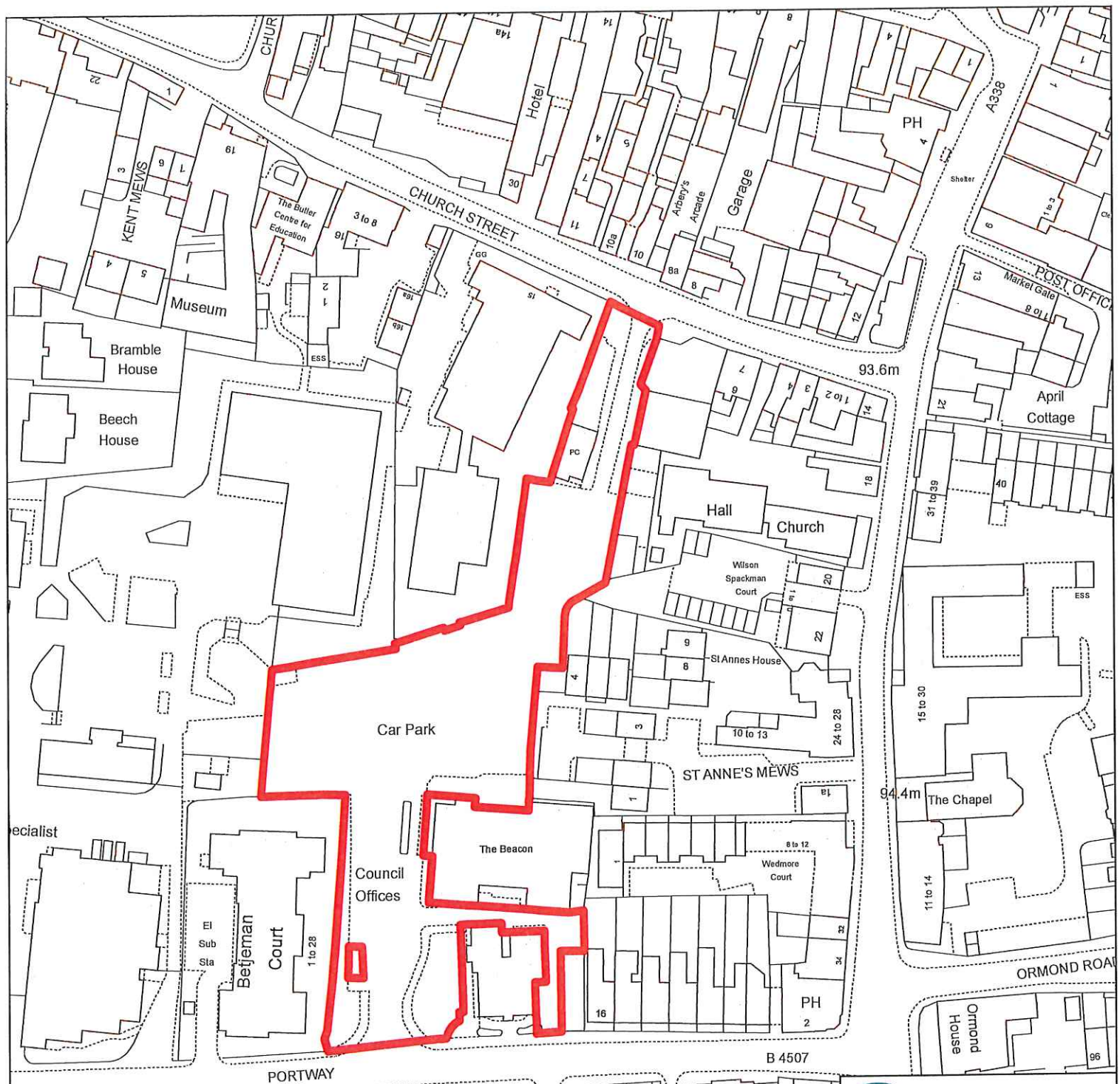
© Crown copyright and database rights 2021 OS 100019525. You are granted a non-exclusive, royalty free, revocable licence solely to view the Licensed Data for non-commercial purposes for the period during which Vale of White Horse District Council makes it available. You are not permitted to copy, sub-license, distribute, sell or otherwise make available the Licensed Data to third parties in any form. Third party rights to enforce the terms of this licence shall be reserved to OS.

**Scale:**  
1:1,250 at A4

**Drawn by:** GP

**Checked by:**





135 Eastern Avenue  
Milton Park  
MILTON, OXON  
OX14 4SB

SU

**Client:**  
Vale of White Horse District Council

**Contract:**  
Parking Orders 2022

**Title:**  
Portway Car Park, Wantage

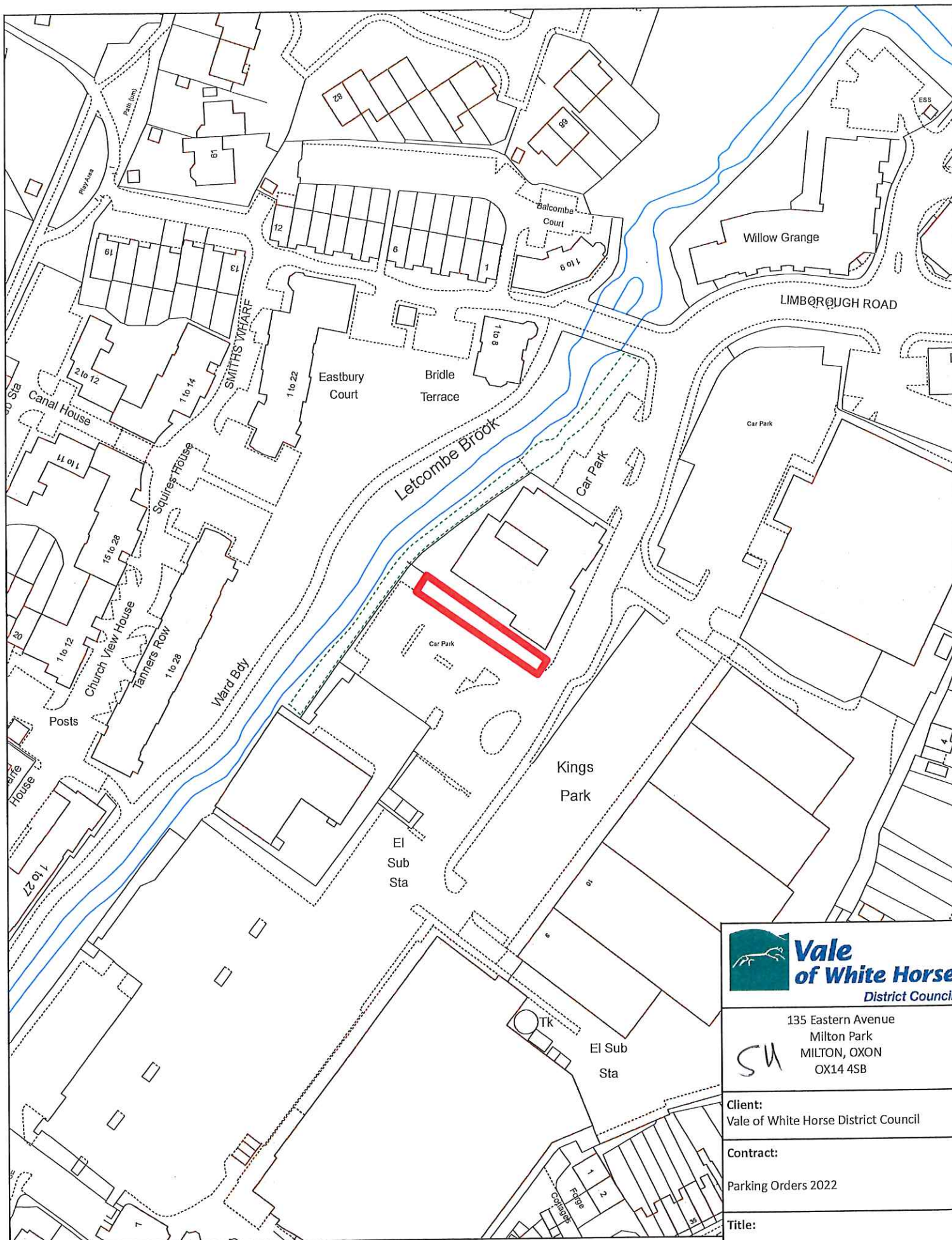
**Division:**  
**Date:**  
25/10/2021

**Scale:**  
1:1,250 at A4  
**Drawn by:** SAW  
**Checked by:**

© Crown copyright and database rights 2021 OS 100019525. You are granted a non-exclusive, royalty free, revocable licence solely to view the Licensed Data for non-commercial purposes for the period during which Vale of White Horse District Council makes it available. You are not permitted to copy, sub-license, distribute, sell or otherwise make available the Licensed Data to third parties in any form. Third party rights to enforce the terms of this licence shall be reserved to OS.







135 Eastern Avenue  
Milton Park  
MILTON, OXON  
OX14 4SB

Client:  
Vale of White Horse District Council

Contract:  
Parking Orders 2022

Title:  
Limbrough Road 1 Car Park, Wantage

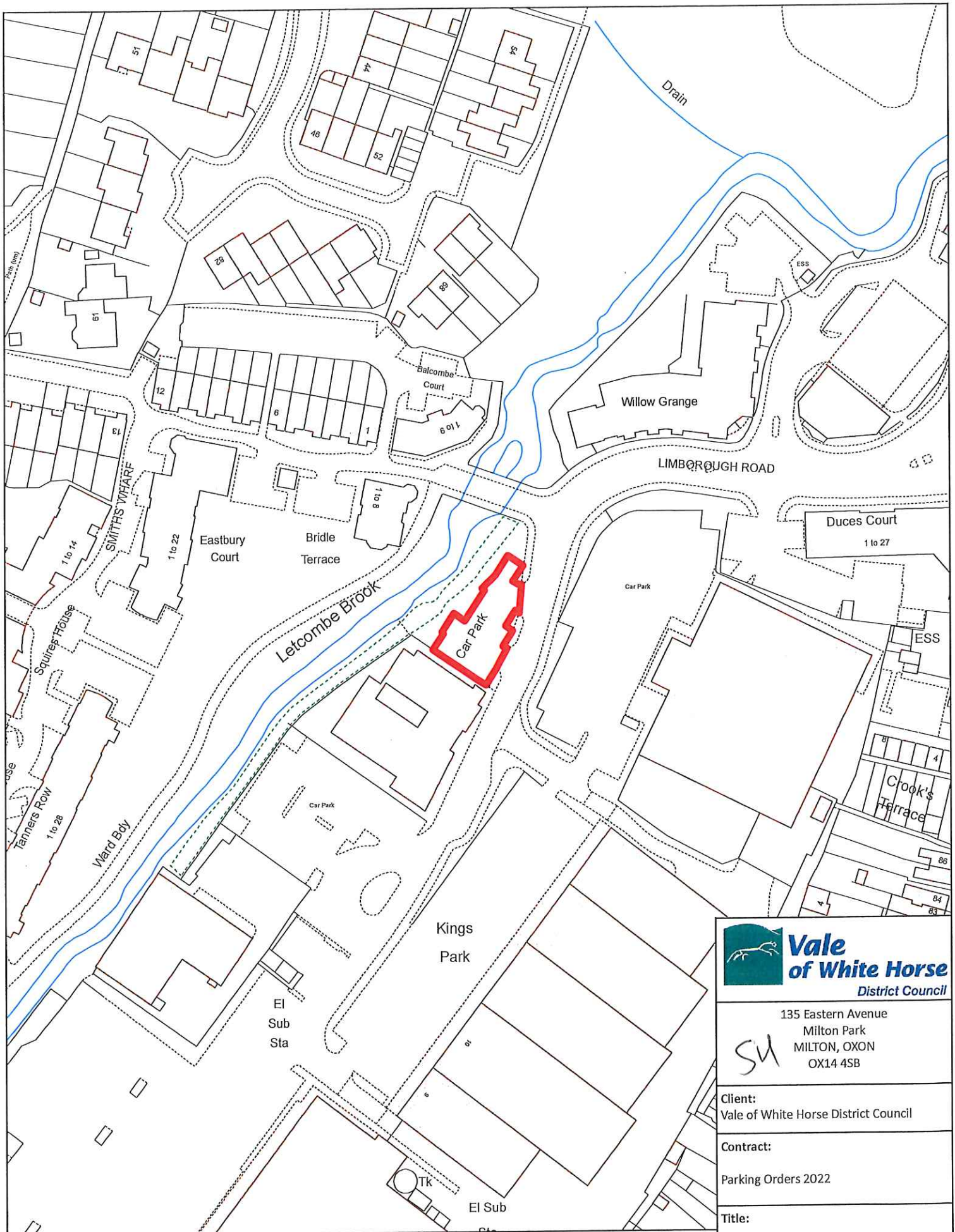
Division: Date:  
25/10/2021

Scale: 1:1,250 at A4  
Drawn by: PR  
Checked by:

© Crown copyright and database rights 2021 OS 100019525. You are granted a non-exclusive, royalty free, revocable licence solely to view the Licensed Data for non-commercial purposes for the period during which Vale of White Horse District Council makes it available. You are not permitted to copy, sub-license, distribute, sell or otherwise make available the Licensed Data to third parties in any form. Third party rights to enforce the terms of this licence shall be reserved to OS.







135 Eastern Avenue  
Milton Park  
MILTON, OXON  
OX14 4SB

Client:  
Vale of White Horse District Council

Contract:  
Parking Orders 2022

Title:  
Limborough Road 2 Car Park, Wantage

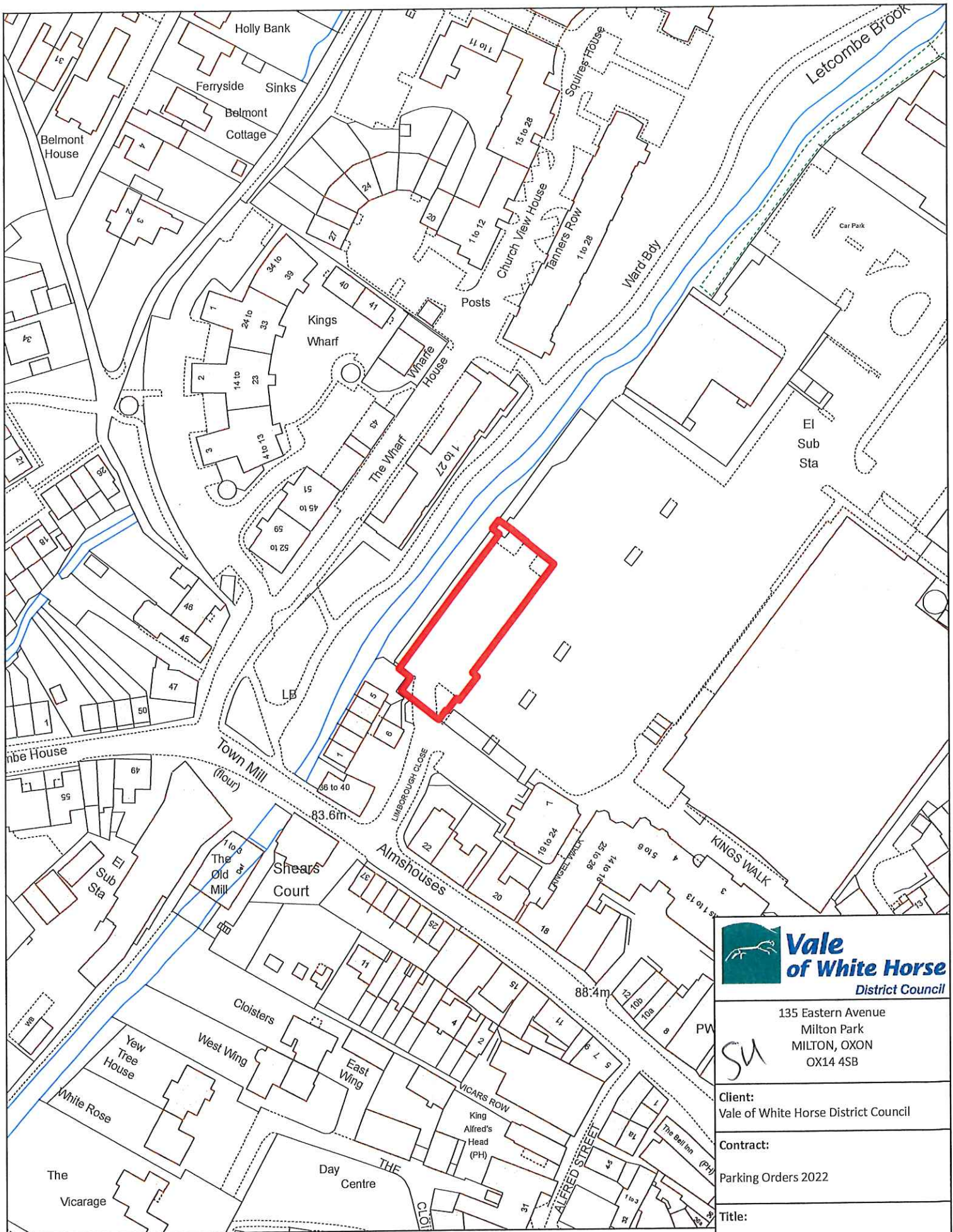
Division: Date:  
25/10/2021

Scale: Drawn by: PR  
1:1,250 at A4 Checked by:

© Crown copyright and database rights 2021 OS 100019525. You are granted a non-exclusive, royalty free, revocable licence solely to view the Licensed Data for non-commercial purposes for the period during which Vale of White Horse District Council makes it available. You are not permitted to copy, sub-license, distribute, sell or otherwise make available the Licensed Data to third parties in any form. Third party rights to enforce the terms of this licence shall be reserved to OS.







135 Eastern Avenue  
Milton Park  
MILTON, OXON  
OX14 4SB

Client:  
Vale of White Horse District Council

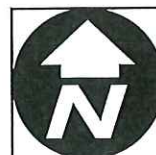
Contract:  
Parking Orders 2022

Title:  
Mill Street Undercroft Car Park, Wantage

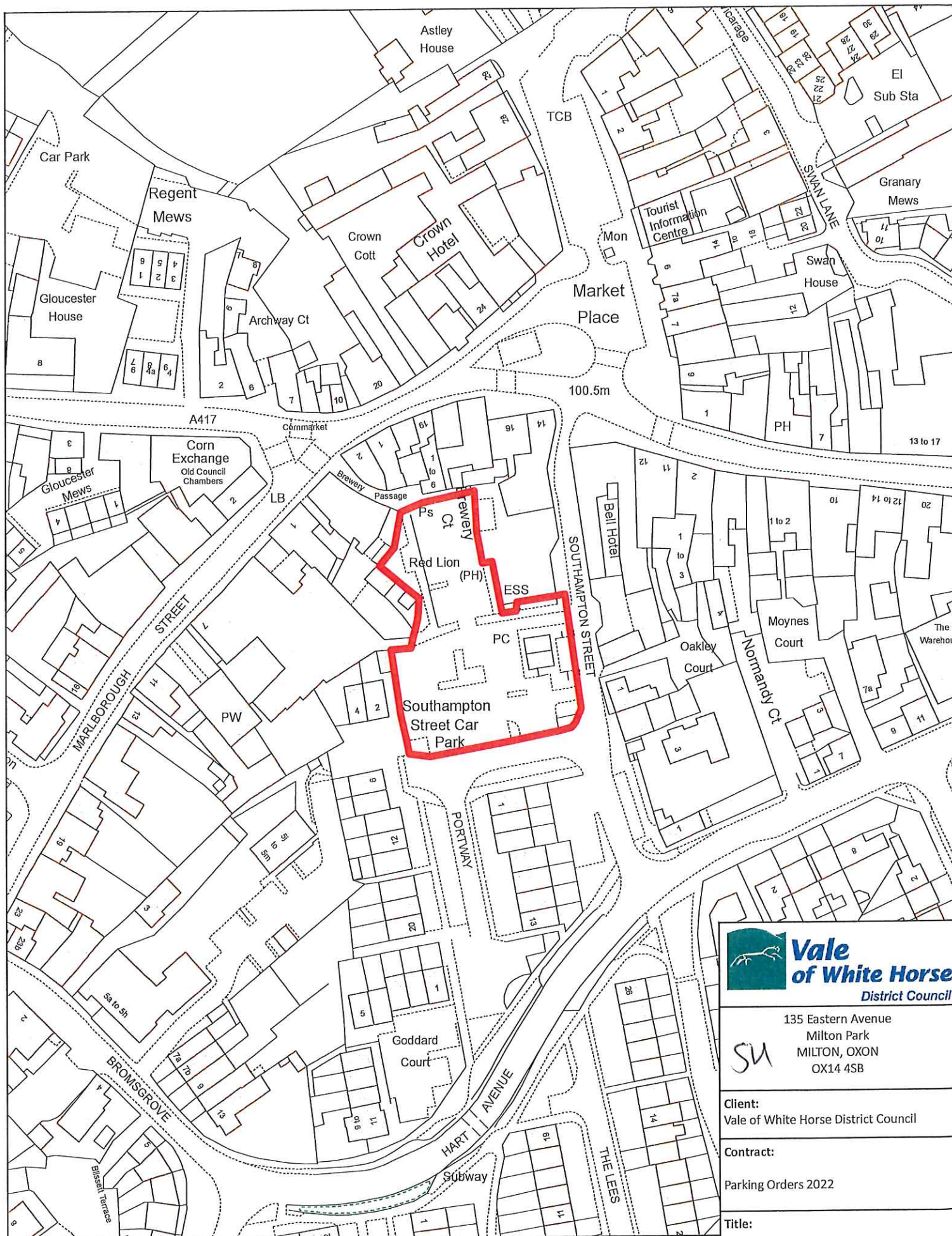
Division: Date:  
25/10/2021

Scale: Drawn by: PR  
1:1,250 at A4 Checked by:

© Crown copyright and database rights 2021 OS 100019525. You are granted a non-exclusive, royalty free, revocable licence solely to view the Licensed Data for non-commercial purposes for the period during which Vale of White Horse District Council makes it available. You are not permitted to copy, sub-license, distribute, sell or otherwise make available the Licensed Data to third parties in any form. Third party rights to enforce the terms of this licence shall be reserved to OS.







135 Eastern Avenue  
Milton Park  
MILTON, OXON  
OX14 4SB

**Client:**  
Vale of White Horse District Council

**Contract:**  
Parking Orders 2022

**Title:**  
Southampton Street Car Park, Faringdon

**Division:**  
**Date:**  
25/10/2021

**Scale:**  
1:1,250 at A4  
**Drawn by:** PR  
**Checked by:**

© Crown copyright and database rights 2021 OS 100019525. You are granted a non-exclusive, royalty free, revocable licence solely to view the Licensed Data for non-commercial purposes for the period during which Vale of White Horse District Council makes it available. You are not permitted to copy, sub-license, distribute, sell or otherwise make available the Licensed Data to third parties in any form. Third party rights to enforce the terms of this licence shall be reserved to OS.







© Crown copyright and database rights 2021 OS 100019525. You are granted a non-exclusive, royalty free, revocable licence solely to view the Licensed Data for non-commercial purposes for the period during which Vale of White Horse District Council makes it available. You are not permitted to copy, sub-license, distribute, sell or otherwise make available the Licensed Data to third parties in any form. Third party rights to enforce the terms of this licence shall be reserved to OS.



135 Eastern Avenue  
Milton Park  
MILTON, OXON  
OX14 4SB

Client:  
Vale of White Horse District Council

Contract:  
Parking Orders 2022

Title:  
Gloucester Street Car Park, Faringdon

Division: Date:  
25/10/2021

Scale: Drawn by: PR  
1:1,250 at A4 Checked by:



## SCHEDULE 1 - CAR PARKS SUBJECT TO PARKING CHARGES AND/OR PENALTY CHARGES

1	2	3	4	5	6	7 SCHEDULE OF CHARGES		8 PENALTY CHARGE		
NAME OF PARKING PLACE	POSITION IN WHICH VEHICLE MAY WAIT	PERMITTED CLASSES OF VEHICLE	HOURS AND DAYS OF OPERATION OF PARKING PLACE	PERMITTED PERIOD: a) CHARGING PERIOD b) NON-CHARGING PERIOD c) MAX. DURATION VEHICLES MAY WAIT IN CHARGING PERIOD d) NON-CHARGING PERIOD DURATION e) MAXIMUM STAY DURATION	NO RETURN PERIOD	7a CHARGES FOR PARKING TICKETS a) CHARGING PERIOD b) NON-CHARGING PERIOD  Footnote 1 Footnote 2 Footnote 3	7b PERMITS (EXCL.VAT) WITHIN CHARGING PERIOD  Footnote 1 Footnote 3	Higher Level £70 Penalty Charge Notice issued £35 if paid within 14 days £70 Notice to Owner issued £105 Charge Certificate issued £113 case registered at Traffic Enforcement Centre  Lower Level £50 Penalty Charge Notice issued £25 if paid within 14 days £50 Notice to Owner issued £75 Charge Certificate issued £83 case registered at Traffic Enforcement Centre		
Abbey Close, Abingdon	Wholly within a parking bay, disabled persons parking bay, electric vehicle recharge bay, or motorcycle bay as indicated by surface markings	All classes of vehicles not exceeding 3.5 tonnes (70cwt) laden weight	All days all hours	a) Monday to Sunday 8am to 6pm b) Monday to Sunday 6pm to 8am c) 10 hours d) 14 hours e) 23 hours	One Hour to any Council car park within Abingdon	a) Not exceeding: - up to 1 hour no charge - up to 2 hours £1.50 - up to 3 hours £2.30 - up to 4 hours £4.20 - up to 6 hours £5.10 - over 6 hours £6.10  b) No charge	Cosener's House Day permits only £6.38 per day £72.00 per month (5 day) £86.00 per month (6 or 7 day) £213.00 per quarter (5 day) £256.00 per quarter (6 or 7 day) £715.00 per annum (5 day) £857.00 per annum (6 or 7 day)  *Resident permit: £471.00 per annum £236.00 for six months	70	Parked in a loading place or bay during restricted hours without loading	Higher level
Audlett Drive, Abingdon	Wholly within a parking bay, disabled persons parking bay, electric vehicle recharge bay, or motorcycle bay as indicated by surface markings	All classes of vehicles not exceeding 3.5 tonnes (70cwt) laden weight	All days all hours	a) Monday to Saturday 8am to 6pm b) Monday to Saturday 6pm to 8am, All day Sunday c) 10 hours d) 38 hours e) 23 hours	One Hour to any Council car park within Abingdon	a) Not exceeding: - up to 1 hour no charge - up to 2 hours £1.50 - up to 3 hours £2.30 - up to 4 hours £4.20 - up to 6 hours £5.10 - over 6 hours £6.10  b) No charge	£72.00 per month (5 day) £86.00 per month (6 or 7 day) £213.00 per quarter (5 day) £256.00 per quarter (6 or 7 day) £715.00 per annum (5 day) £857.00 per annum (6 or 7 day)  *Resident permit: £471.00 per annum £236.00 for six months	71	Parked in an electric vehicles' charging place during restricted hours without charging	Higher level
								73	Parked without payment of the parking charge	Lower level
								74	Using a vehicle in a parking place in connection with the sale or offering or exposing for sale of goods when prohibited	Higher level
								80	Parked for longer than permitted	Lower level
								81	Parked in a restricted area in a car park	Higher level
								82	Parked after the expiry of paid for time	Lower level
								83	Parked in a car park without clearly displaying a valid pay & display ticket or voucher or parking clock	Lower level
								84	Parked with payment made to extend the stay beyond initial time	Lower level
								85	Parked without clearly displaying a valid permit where required	Higher level
								86	Not parked correctly within the markings of a bay or space	Lower level
								87	Parked in a designated disabled person's parking place without displaying a valid disabled person's badge in the prescribed manner	Higher level
								89	Vehicle parked exceeds maximum weight or height or length permitted	Higher level
								90	Re-parked in the same car park or a car park within the same town within one hour after leaving	Lower level
								91	Parked in a car park or area not designated for that class of vehicle	Higher level
								92	Parked causing an obstruction	Higher level
								93	Parked in car park when closed	Lower level
								94	Parked in a pay & display car park without clearly displaying two valid pay and display tickets when required	Lower level
								95	Parked in a parking place for a purpose other than that designated	Lower level
								96	Parked with engine running where prohibited	Lower level



1	2	3	4	5	6	7 SCHEDULE OF CHARGES		8 PENALTY CHARGE										
NAME OF PARKING PLACE	POSITION IN WHICH VEHICLE MAY WAIT	PERMITTED CLASSES OF VEHICLE	HOURS AND DAYS OF OPERATION OF PARKING PLACE	PERMITTED PERIOD: a) CHARGING PERIOD b) NON-CHARGING PERIOD c) MAX. DURATION VEHICLES MAY WAIT IN CHARGING PERIOD d) NON-CHARGING PERIOD DURATION e) MAXIMUM STAY DURATION	NO RETURN PERIOD	7a CHARGES FOR PARKING TICKETS a) CHARGING PERIOD b) NON-CHARING PERIOD  Footnote 1 Footnote 2 Footnote 3	7b PERMITS (EXCL.VAT) WITHIN CHARING PERIOD  Footnote 1 Footnote 3	Higher Level £70 Penalty Charge Notice issued £35 if paid within 14 days £70 Notice to Owner issued £105 Charge Certificate issued £113 case registered at Traffic Enforcement Centre  Lower Level £50 Penalty Charge Notice issued £25 if paid within 14 days £50 Notice to Owner issued £75 Charge Certificate issued £83 case registered at Traffic Enforcement Centre										
Charter Multi Storey, Abingdon	Wholly within a parking bay, disabled persons parking bay, electric vehicle recharge bay, or motorcycle bay as indicated by surface markings	All classes of vehicles not exceeding 3.5 tonnes (70cwts) laden weight  Height restriction of 1.930m (6'4")	Levels 1 & 2 open all days all hours  Level 1 – Mon-Fri permit holders only. Sat permit holders and pay & display Max stay 3 hours. Free after 6:00 p.m.  Level 2 – Doctors parking and disabled parking only  Levels 3 & 4 – 7:00am to 7:30pm. Closed Sundays and Bank Holidays. Max stay 3 hours  Levels 5 to 9 – 7:00am to 7:30pm Closed Sundays and Bank Holidays. Long stay, short stay, permit holders	a) Monday to Saturday 8am to 6pm  b) Monday to Saturday 6pm to 8am. All day Sunday  c) 10 hours  d) 38 hours  e) 23 hours	One Hour to any Council car park within Abingdon	a) Level 1 (Saturday only and levels 3 & 4 Monday to Saturday) Not exceeding: - up to 1 hour no charge - up to 2 hours £1.50 - up to 3 hours £2.30  Level 5 and above (Monday to Saturday) Not exceeding: - up to 1 hour no charge - up to 2 hours £1.50 - up to 3 hours £2.30 - up to 4 hours £4.20 - up to 6 hours £5.10 - over 6 hours £6.10  b) No charge  *See footnote 4	£72.00 per month (5 day) £86.00 per month (6 or 7 day) £213.00 per quarter (5 day) £256.00 per quarter (6 or 7 day) £715.00 per annum (5 day) £857.00 per annum (6 or 7 day)  *Resident permit £471.00 per annum £236.00 for six months	70	Parked in a loading place or bay during restricted hours without loading	Higher level								
								71	Parked in an electric vehicles' charging place during restricted hours without charging	Higher level								
								73	Parked without payment of the parking charge	Lower level								
								74	Using a vehicle in a parking place in connection with the sale or offering or exposing for sale of goods when prohibited	Higher level								
								80	Parked for longer than permitted	Lower level								
								81	Parked in a restricted area in a car park	Higher level								
								82	Parked after the expiry of paid for time	Lower level								
								83	Parked in a car park without clearly displaying a valid pay & display ticket or voucher or parking clock	Lower level								
								84	Parked with payment made to extend the stay beyond initial time	Lower level								
								85	Parked without clearly displaying a valid permit where required	Higher level								
								86	Not parked correctly within the markings of a bay or space	Lower level								
								87	Parked in a designated disabled person's parking place without displaying a valid disabled person's badge in the prescribed manner	Higher level								
								89	Vehicle parked exceeds maximum weight or height or length permitted	Higher level								
								90	Re-parked in the same car park or a car park within the same town within one hour after leaving	Lower level								
								91	Parked in a car park or area not designated for that class of vehicle	Higher level								
								92	Parked causing an obstruction	Higher level								
								West St Helen Street, Abingdon	Wholly within a parking bay, disabled persons parking bay, electric vehicle recharge bay, or motorcycle bay as indicated by surface markings	All classes of vehicles not exceeding 3.5 tonnes (70cwts) laden weight	All days all hours	a) Monday to Saturday 8am to 6pm  b) Monday to Saturday 6pm to 8am All day Sunday  c) 10 hours  d) 38 hours  e) 23 hours	One Hour to any Council car park within Abingdon	a) Not exceeding: - up to 1 hour no charge - up to 2 hours £1.50 - up to 3 hours £2.30 - up to 4 hours £4.20 - up to 6 hours £5.10 - over 6 hours £6.10  b) No charge	£72.00 per month (5 day) £86.00 per month (6 or 7 day) £213.00 per quarter (5 day) £256.00 per quarter (6 or 7 day) £715.00 per annum (5 day) £857.00 per annum (6 or 7 day)  *Resident permit: £471.00 per annum £236.00 for six months	93	Parked in car park when closed	Lower level
																94	Parked in a pay & display car park without clearly displaying two valid pay and display tickets when required	Lower level
95	Parked in a parking place for a purpose other than that designated	Lower level																
96	Parked with engine running where prohibited	Lower level																



1	2	3	4	5	6	7 SCHEDULE OF CHARGES		8 PENALTY CHARGE		
NAME OF PARKING PLACE	POSITION IN WHICH VEHICLE MAY WAIT	PERMITTED CLASSES OF VEHICLE	HOURS AND DAYS OF OPERATION OF PARKING PLACE	PERMITTED PERIOD: a) CHARGING PERIOD b) NON-CHARGING PERIOD c) MAX. DURATION VEHICLES MAY WAIT IN CHARGING PERIOD d) NON-CHARGING PERIOD DURATION e) MAXIMUM STAY DURATION	NO RETURN PERIOD	7a CHARGES FOR PARKING TICKETS a) CHARGING PERIOD b) NON-CHARGING PERIOD  Footnote 1 Footnote 2 Footnote 3	7b PERMITS (EXCL.VAT) WITHIN CHARGING PERIOD  Footnote 1 Footnote 3	Higher Level £70 Penalty Charge Notice issued £35 if paid within 14 days £70 Notice to Owner issued £105 Charge Certificate issued £113 case registered at Traffic Enforcement Centre  Lower Level £50 Penalty Charge Notice issued £25 if paid within 14 days £50 Notice to Owner issued £75 Charge Certificate issued £83 case registered at Traffic Enforcement Centre		
Civic, Abingdon	Wholly within a parking bay, disabled persons parking bay, electric vehicle recharge bay, or motorcycle bay as indicated by surface markings	All classes of vehicles not exceeding 3.5 tonnes (70cwts) laden weight	All days all hours	a) Monday to Saturday 8am to 6pm b) Monday to Saturday 6pm to 8am. All day Sunday c) 10 hours d) 38 hours e) 23 hours	One Hour to any Council car park within Abingdon	a) Not exceeding: - up to 1 hour no charge - up to 2 hours £1.50 - up to 3 hours £2.30 - up to 4 hours £4.20 - up to 6 hours £5.10 - over 6 hours £6.10  b) No charge		70	Parked in a loading place or bay during restricted hours without loading	Higher level
Cattle Market, Abingdon	Wholly within a parking bay, disabled persons parking bay, electric vehicle recharge bay, or motorcycle bay as indicated by surface markings	All classes of vehicles not exceeding 3.5 tonnes (70cwts) laden weight	All days all hours	a) Monday to Saturday 8am to 6pm b) Monday to Saturday 6pm to 8am. All day Sunday c) 10 hours d) 38 hours e) 23 hours	One Hour to any Council car park within Abingdon	a) Not exceeding: - up to 1 hour no charge - up to 2 hours £1.50 - up to 3 hours £2.30 - up to 4 hours £4.20 - up to 6 hours £5.10 - over 6 hours £6.10  b) No charge	*Resident permit: £471.00 per annum £236.00 for six months  ** £72 per month (5 day) £86 per month (6 or 7 day) £213.00 per quarter (5 day) £256.00 per quarter (6 or 7 day) £715.00 per annum (5 day) £857.00 per annum (6 or 7 day)	71	Parked in an electric vehicles' charging place during restricted hours without charging	Higher level
Portway, Wantage	Wholly within a parking bay, disabled persons parking bay, electric vehicle recharge bay, or motorcycle bay as indicated by surface markings	All classes of vehicles not exceeding 3.5 tonnes (70cwts) laden weight	All days all hours	a) Monday to Saturday 8am to 6pm b) Monday to Saturday 6pm to 8am. All day Sunday c) 10 hours d) 38 hours e) 23 hours	One Hour to any Council car park within Wantage	a) Not exceeding: - up to 1 hour no charge - up to 2 hours £1.50 - up to 3 hours £2.10 - up to 4 hours £4.10 - up to 6 hours £5.10 - over 6 hours £6.10  b) No charge	*Resident permit: £195.00 per annum  **£51.00 per month (6 or 7 day) £150.00 per quarter (6 or 7 day) £501.00 per annum (6 or 7 day)  School Permit – term time only (limited time) £12.00	73	Parked without payment of the parking charge	Lower level
								74	Using a vehicle in a parking place in connection with the sale or offering or exposing for sale of goods when prohibited	Higher level
								80	Parked for longer than permitted	Lower level
								81	Parked in a restricted area in a car park	Higher level
								82	Parked after the expiry of paid for time	Lower level
								83	Parked in a car park without clearly displaying a valid pay & display ticket or voucher or parking clock	Lower level
								84	Parked with payment made to extend the stay beyond initial time	Lower level
								85	Parked without clearly displaying a valid permit where required	Higher level
								86	Not parked correctly within the markings of a bay or space	Lower level
								87	Parked in a designated disabled person's parking place without displaying a valid disabled person's badge in the prescribed manner	Higher level
								89	Vehicle parked exceeds maximum weight or height or length permitted	Higher level
								90	Re-parked in the same car park or a car park within the same town within one hour after leaving	Lower level
								91	Parked in a car park or area not designated for that class of vehicle	Higher level
								92	Parked causing an obstruction	Higher level
								93	Parked in car park when closed	Lower level
								94	Parked in a pay & display car park without clearly displaying two valid pay and display tickets when required	Lower level
								95	Parked in a parking place for a purpose other than that designated	Lower level
								96	Parked with engine running where prohibited	Lower level



1	2	3	4	5	6	7 SCHEDULE OF CHARGES		8 PENALTY CHARGE										
NAME OF PARKING PLACE	POSITION IN WHICH VEHICLE MAY WAIT	PERMITTED CLASSES OF VEHICLE	HOURS AND DAYS OF OPERATION OF PARKING PLACE	PERMITTED PERIOD: a) CHARGING PERIOD b) NON-CHARGING PERIOD c) MAX. DURATION VEHICLES MAY WAIT IN CHARGING PERIOD d) NON-CHARGING PERIOD DURATION e) MAXIMUM STAY DURATION	NO RETURN PERIOD	7a CHARGES FOR PARKING TICKETS a) CHARGING PERIOD b) NON-CHARING PERIOD  Footnote 1 Footnote 2 Footnote 3	7b PERMITS (EXCL.VAT) WITHIN CHARING PERIOD  Footnote 1 Footnote 3	Higher Level £70 Penalty Charge Notice issued £35 if paid within 14 days £70 Notice to Owner issued £105 Charge Certificate issued £113 case registered at Traffic Enforcement Centre  Lower Level £50 Penalty Charge Notice issued £25 if paid within 14 days £50 Notice to Owner issued £75 Charge Certificate issued £83 case registered at Traffic Enforcement Centre										
Limborough Road 1 and 2, Wantage	Wholly within a parking bay, disabled persons parking bay, electric vehicle recharge bay, or motorcycle bay as indicated by surface markings	All classes of vehicles not exceeding 3.5 tonnes (70cwts) laden weight	All days all hours	a) Monday to Saturday 8am to 6pm  b) Monday to Saturday 6pm to 8am. All day Sunday  c) 10 hours  d) 38 hours  e) 23 hours	One Hour to any Council car park within Wantage	a) Not exceeding: - up to 1 hour no charge - up to 2 hours £1.50 - up to 3 hours £2.10 - up to 4 hours £3.70 - up to 6 hours £4.10 - over 6 hours £4.60  b) No charge	£51.00 per month (6 or 7 day) £150.00 per quarter (6 or 7 day) £501.00 per annum (6 or 7 day)  *Resident permit: £255.00 per annum £135.00 for six months  Market Traders Permit: 1 day a week £74 per annum	70	Parked in a loading place or bay during restricted hours without loading	Higher level								
								71	Parked in an electric vehicles' charging place during restricted hours without charging	Higher level								
								73	Parked without payment of the parking charge	Lower level								
								74	Using a vehicle in a parking place in connection with the sale or offering or exposing for sale of goods when prohibited	Higher level								
								80	Parked for longer than permitted	Lower level								
								81	Parked in a restricted area in a car park	Higher level								
								82	Parked after the expiry of paid for time	Lower level								
								83	Parked in a car park without clearly displaying a valid pay & display ticket or voucher or parking clock	Lower level								
								Mill Street, Undercroft, Wantage	Wholly within a parking bay, disabled persons parking bay, electric vehicle recharge bay, or motorcycle bay as indicated by surface markings	All classes of vehicles not exceeding 3.5 tonnes (70cwts) laden weight  Height restriction 2.2m (7'2")	All days all hours	a) Monday to Saturday 8am to 6pm  b) Monday to Saturday 6pm to 8am. All day Sunday  c) 10 hours  d) 38 hours  e) 23 hours	One Hour to any Council car park within Wantage	a) Not exceeding: - up to 1 hour no charge - up to 2 hours £1.50 - up to 3 hours £2.10 - up to 4 hours £3.70 - up to 6 hours £4.10 - over 6 hours £4.60  b) No charge	£51.00 per month (6 or 7 day) £150.00 per quarter (6 or 7 day) £501.00 per annum (6 or 7 day)  *Resident permit: £255.00 per annum £135.00 for six months	84	Parked with payment made to extend the stay beyond initial time	Lower level
																85	Parked without clearly displaying a valid permit where required	Higher level
86	Not parked correctly within the markings of a bay or space	Lower level																
87	Parked in a designated disabled person's parking place without displaying a valid disabled person's badge in the prescribed manner	Higher level																
89	Vehicle parked exceeds maximum weight or height or length permitted	Higher level																
90	Re-parked in the same car park or a car park within the same town within one hour after leaving	Lower level																
91	Parked in a car park or area not designated for that class of vehicle	Higher level																
Southampton Street, Faringdon	Wholly within a parking bay, disabled persons parking bay, electric vehicle recharge bay, or motorcycle bay as indicated by surface markings	All classes of vehicles not exceeding 3.5 tonnes (70cwts) laden weight	All days all hours	a) a Monday to Saturday 8am to 6pm  b) Monday to Saturday 6pm to 8am. All day Sunday  c) 10 hours, max stay 3 hours  d) 38 hours  e) 23 hours	One Hour to any Council car park within Faringdon	a) Not exceeding: - up to 2 hours no charge - up to 3 hours £1.90  b) No charge	School Permit - term time only (limited time) – £12.00									92	Parked causing an obstruction	Higher level
																93	Parked in car park when closed	Lower level
																94	Parked in a pay & display car park without clearly displaying two valid pay and display tickets when required	Lower level
								95	Parked in a parking place for a purpose other than that designated	Lower level								
								96	Parked with engine running where prohibited	Lower level								



1	2	3	4	5	6	7 SCHEDULE OF CHARGES		8 PENALTY CHARGE		
NAME OF PARKING PLACE	POSITION IN WHICH VEHICLE MAY WAIT	PERMITTED CLASSES OF VEHICLE	HOURS AND DAYS OF OPERATION OF PARKING PLACE	PERMITTED PERIOD: a) CHARGING PERIOD b) NON-CHARGING PERIOD c) MAX. DURATION VEHICLES MAY WAIT IN CHARGING PERIOD d) NON-CHARGING PERIOD DURATION e) MAXIMUM STAY DURATION	NO RETURN PERIOD	7a CHARGES FOR PARKING TICKETS a) CHARGING PERIOD b) NON-CHARING PERIOD  Footnote 1 Footnote 2 Footnote 3	7b PERMITS (EXCL.VAT) WITHIN CHARING PERIOD  Footnote 1 Footnote 3	Higher Level £70 Penalty Charge Notice issued £35 if paid within 14 days £70 Notice to Owner issued £105 Charge Certificate issued £113 case registered at Traffic Enforcement Centre  Lower Level £50 Penalty Charge Notice issued £25 if paid within 14 days £50 Notice to Owner issued £75 Charge Certificate issued £83 case registered at Traffic Enforcement Centre		
Gloucester Street, Faringdon	Wholly within a parking bay, disabled persons parking bay, electric vehicle recharge bay, or motorcycle bay as indicated by surface markings	All classes of vehicles not exceeding 3.5 tonnes (70cwts) laden weight	All days all hours	a) Monday to Saturday 8am to 6pm  b) Monday to Saturday 6pm to 8am. All Day Sunday  c) 10 hours  d) 38 hours  e) 23 hours	One Hour to any Council car park within Faringdon	a) Not exceeding: - up to 1 hour no charge - up to 2 hours £1.50 - up to 3 hours £1.80 - up to 4 hours £3.20 - up to 6 hours £3.40 - over 6 hours £6.60  b) No charge	£36.00 per month (6 or 7 day) £108.00 per quarter (6 or 7 day) £356.00 per annum (6 or 7 day)  *Resident permit: £195 per annum  Market Traders Permit: One day per week £40 per annum  School Permit – term time only (limited time) – £12.00	70	Parked in a loading place or bay during restricted hours without loading	Higher level
								71	Parked in an electric vehicles' charging place during restricted hours without charging	Higher level
								73	Parked without payment of the parking charge	Lower level
								74	Using a vehicle in a parking place in connection with the sale or offering or exposing for sale of goods when prohibited	Higher level
								80	Parked for longer than permitted	Lower level
								81	Parked in a restricted area in a car park	Higher level
								82	Parked after the expiry of paid for time	Lower level
								83	Parked in a car park without clearly displaying a valid pay & display ticket or voucher or parking clock	Lower level
								84	Parked with payment made to extend the stay beyond initial time	Lower level
								85	Parked without clearly displaying a valid permit where required	Higher level
								86	Not parked correctly within the markings of a bay or space	Lower level
								87	Parked in a designated disabled person's parking place without displaying a valid disabled person's badge in the prescribed manner	Higher level
								89	Vehicle parked exceeds maximum weight or height or length permitted	Higher level
								90	Re-parked in the same car park or a car park within the same town within one hour after leaving	Lower level
								91	Parked in a car park or area not designated for that class of vehicle	Higher level
								92	Parked causing an obstruction	Higher level
								93	Parked in car park when closed	Lower level
								94	Parked in a pay & display car park without clearly displaying two valid pay and display tickets when required	Lower level
								95	Parked in a parking place for a purpose other than that designated	Lower level
								96	Parked with engine running where prohibited	Lower level

Footnote 1: The Council will charge £12 when asked to issue replacement tickets or permits, skips are £25 + VAT per space (2 spaces req'd) and wheelie bins are £204 + VAT per space.

Footnote 2: No charges apply to motorcycles and vehicles displaying a disabled person's badge at all car parks.

Footnote 3: A valid ticket or parking permit will be required to be displayed during a charging period at those car parks where charges are payable, including those periods when a charge is not payable.

Footnote 4: There will be a vehicle release fee of £50 for the Charter multi-story car park

\*Resident permits are being phased out and are no longer available to new customers.

\*\*Permits may become available if resident take-up reduces\* and if space allows, the council will make available for purchase at Cattle Market, Abingdon and Portway, Wantage at a cost set out in column 7b.