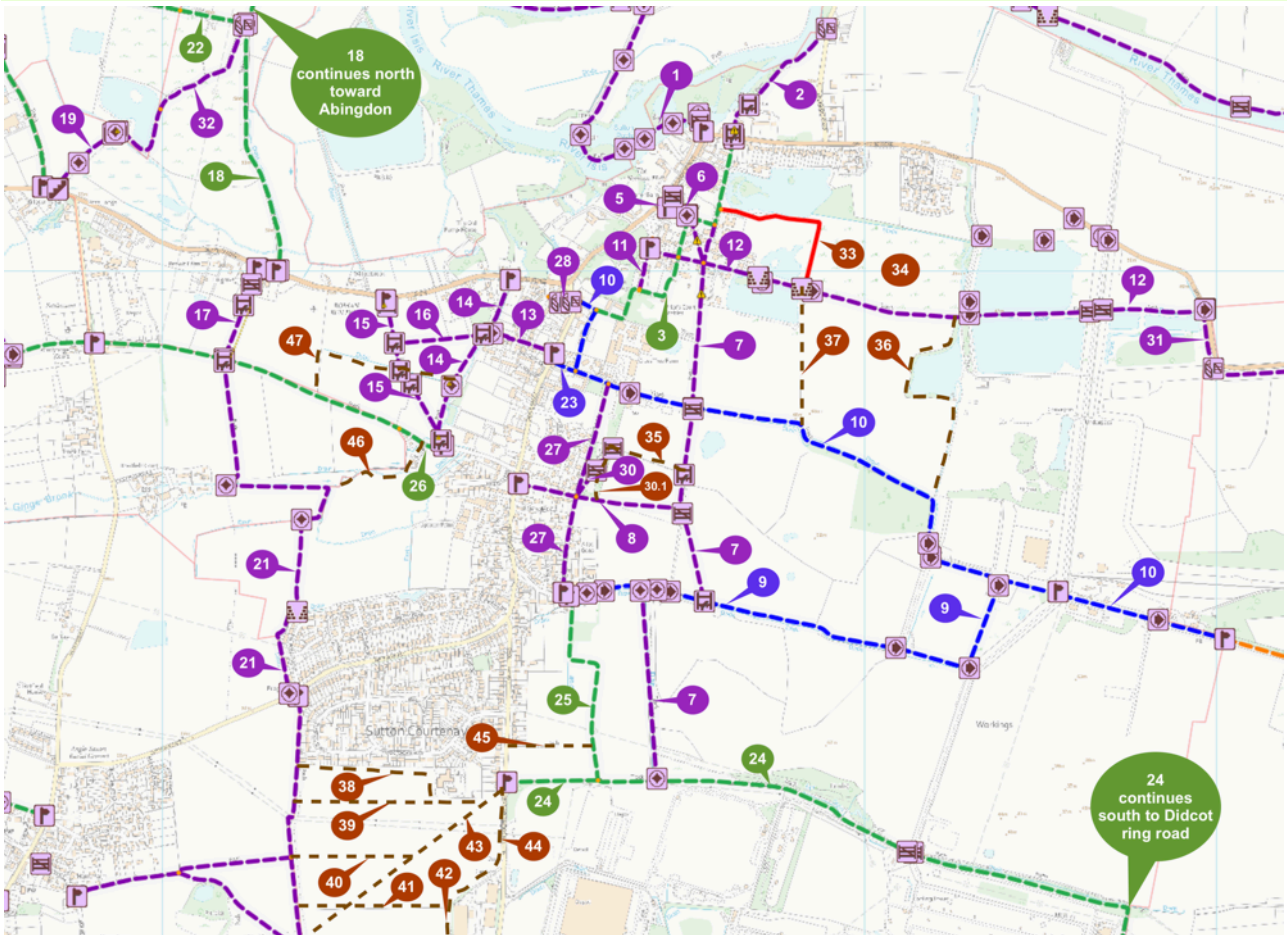


Oxfordshire Definitive Map showing recorded Public Rights of Way and other paths in regular use in Sutton Courtenay (373)



	Footpath (FP)		Barrier
	Bridleway (BR)		Crossing
	Restricted Byway		Sign post
	Byway (BW or BOAT) <small>(Byway Open to All Traffic)</small>		Gap
	Proposed (Unsuccessful)		Kissing gate
	Public Path Orders (Order Made)		Gate
	Creation Agreements/Dedications		Steps
	Modifications		Stile
	Problem		Waymark post
	Problem (Unprocessed)		Village Green
	Issue (Linear)	FB	Footbridge
	Issue (Area)		Additional paths identified, some shown on OS maps as 'Path'

This report on Sutton Courtenay Rights Of Way (ROW) has a record for each path in or adjacent to the Sutton Courtenay Parish Boundary. The national system for numbering paths has been used for recorded Public Rights Of Way (PROW). The location maps are, in most cases, excerpts from the Definitive Map (DM). The Definitive Map and Statement (DMS) is the legal record of PROW.

This is the legal record held by The Local Authority responsible for Highways, usually the County Council. In `Oxfordshire the Ordnance Survey (OS) map is used with the PROW detail added.

This is why some maps show 'path' as a grey dash line, whereas the DM PROW are shown as Blue for Byways, Green for Bridleway and Mauve for Footpaths. Bridges are shown as FB on the OS map and or recorded with the Crossing symbol as shown on the above legend.

For Sutton Courtenay the DMS PROW numbering system prefix is 373. The DMS also includes names for some paths and these have also been included in the reports. Some paths and fields may have local names, i.e. names used by local people to identify a path or field. These have also been included where useful or interesting.

Many ROW remain unrecorded on the DMS. The Countryside and Rights of Way Act 2000 provides that paths that are not recorded on the Definitive Map by 2026, even if they were in use prior to 1949 will automatically be deemed stopped up, i.e. extinguished, on 1 January 2026.

The highway right to use a PROW is restricted to passing and re-passing, there is no automatic right to roam or picnic etc.

Issues with PROW should be reported to Oxfordshire County Council. The Council has a reporting tool to that can be found at <https://publicrightsofway.oxfordshire.gov.uk/StandardMap.aspx>

Please report any errors or omissions in this document to TBA.

Acknowledgements

Grateful thanks to the many people that contributed to this document including:

Andrew Bowes

Bryony Landsbert

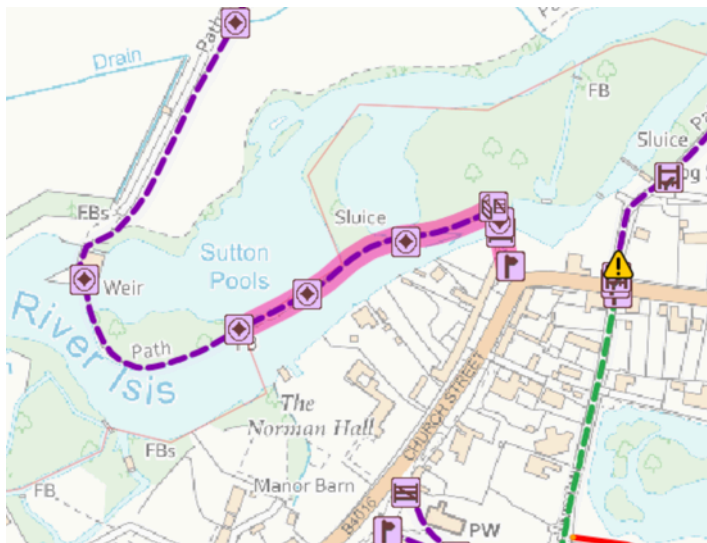
Carolyn Fordham-Walker

Kathy Whittaker

Sarah Eccles

Francis Frith Institute for the use of historic photographs

Path reference	373/01	Designated	Public Footpath (FP)
From	N. end of Church Street, across river and W.S.W.		
To	Parish boundary At second weir (The Lashers).		



- FP 373/1 is highlighted in pink
- The thin red line is the parish boundary with Culham

Description Narrow and often muddy this, 278m, unmade path is part of the weir structure that crosses the River Thames at Sutton Pools, with outstanding views across the grounds of the Norman Hall and the rear of the other properties on Church Street.

Function A link between SC and Culham via Sutton Pools, over the weirs. Used by people with boats to access the moorings and by anglers it is also the most direct route to walk towards Abingdon from SC Church St, or to access the Thames Path. At the parish boundary it continues generally north on Culham FP 183/2.

Comments This path could be identified as a beauty spot on the Thames. The rich history of this area could enhance the experience of walking the Thames Path. There is a marked OS path on the north bank of the Thames following the river downstream, NE, to the bridge and lock near Tolgate Road. Cyclists also use this path even though it is not suitable for cycling, probably because it is the most direct route connecting SC with Abingdon.

The path starts in front of Walton House. Walton House is one of 3 properties attributed to Lord Herbert Henry Asquith, though most references claim the development of the Wharf, Walton House and Mill House to Margot Asquith. The original purchase was probably of Wharf Barn as the Wharf is not recorded as being built till circa 1913 by Walter Cave, for Mrs. Asquith. It seems to have been built on the site of the Queens Head PH which was next to Walton House (C 19 Cent) . <http://www.oxonblueplaques.org.uk/plaques/asquith.html>

The Mill House, to the east side of the path, was previously the overseers house for the Papermill. It was owned for a time by Helena Bonham-Carter a descendant of Lord Asquith's.

1883 map, showing paper mills and the Queen's Head PH, both long gone, but the Fish PH and the Almshouses remain.

The path starts to the north of Walton House. Walton House is one of 3 properties attributed to Lord Asquith.



The old paper mill chimney, before destruction:- Source – Oxford Mail. Wharf House is on the left of the chimney.



The path, 373/01 starts at the Mill House, corner of Church St and Appleford Rd.



Finger post corner of Mill house wall near post box.



Gate to path passing over a wooden bridge before turning left.



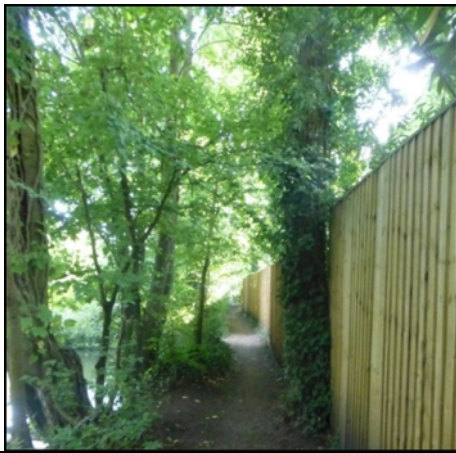
First view of the river from FP 373/01 just before the bridge beside The Mill House on the corner of Church St and Appleford Rd.



View upstream from the bridge over the Thames at Mill House.



View back across the bridge at The Mill House to the start of FP 373/01.



Fence along Mill House Grounds. The Mill House was previously the overseers house for the Papermill.



Fence, c1m, closing the spit of ground between the first two weirs. Owned by Mill House. Fence erected 2020 closing general access to the pools at this point; possibly erected as a result of antisocial behaviour.



View of one of the boat houses, from 373/01, belonging to the houses on Church St.

Sutton Courtenay, Above The Mill 1890

View upriver along 373/01, from The Mill in 1890.





View of the boat houses behind the houses on Church Street with a narrow boat moored in front.



View towards 2nd Weir with fence to private land, belonging to Mill House, to the right. The parish boundary with Culham is at the end of the fence and continues along the right side of the path; the path across the weir is still in SC.



View downstream from the second weir. Low level fence to the spit of land belonging to Mill House.



The path continues across the island between the 2nd and 3rd weirs with the parish boundary on the right of the path.



View towards the Norman Hall on Church Street.



View from 373/01, gardens of houses on Church Street slopping down to the Thames or Isis, some with moorings on the river.



Modern house, viewed from FP 373/01.

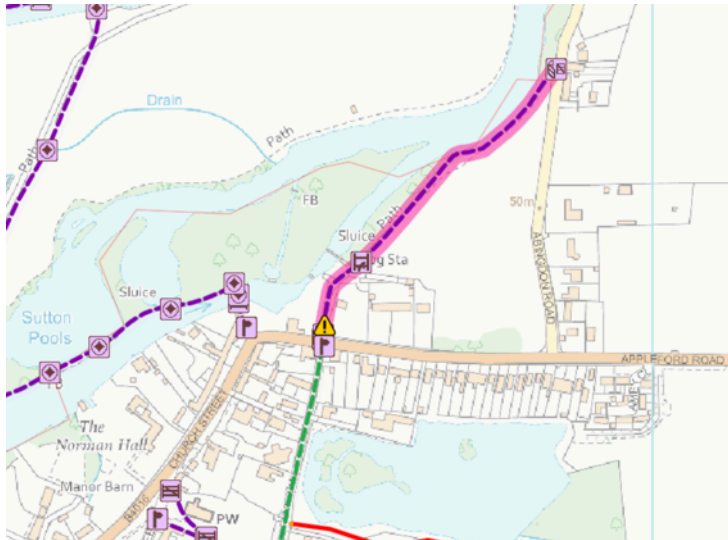


The path crosses the parish boundary, in to Culham, 183/2, on the far side of the 3rd weir.



The view south across the Thames toward the Norman Hall. Note the Heron perched on the mooring dolphin. This is the point where the Ginge Brook joins the River Thames.

Path reference 373/02 **Designated** Public Footpath (FP)
From Appleford Rd. opp. 'Fish Inn' N and N.E.
To Abingdon Road near Sutton Bridge on the S side of the River Thames.



- FP 373/2 is highlighted in pink
- The thin red line is the parish boundary with Culham

Description This short, 417m, path runs along the south bank of the Thames on a farmed field, is unmade and can be muddy, often floods in winter. There is a stile 30m north of the Appleford Road end (south west) and a kissing gate and a few step steps at the Abingdon Road end (north east).

Function This path is only suitable for walking. It links Appleford Road at All Saints Lane to Sutton Bridge, Abingdon Rd, across a farm field beside the River Thames.

Comments A path with picturesque views of the River Thames and Sutton Bridge and fishing rights to Harwell and Sutton Courtenay Fishing Clubs. The 2nd, furthest field, near the Abingdon Road floods frequently in winter. Sutton Bridge is the first (south) bridge, which carries Abingdon Rd across the Thames (main river). Culham Bridge is the second (north) bridge, which carries Tollgate Rd across the navigable Culham Cut; a canal, which enables boats to bypass SC. The SC parish boundary is on the south bank of the Thames.



View from north end of All Saints lane by the Fish PH.



FP 373/02 is also the roadway access to houses on the north side of Appleford Road and leads to the stile and gate in the first of two farmed fields the path crosses. There is gated access to the Mill House on the left.



Finger post for FP 373/02 partially concealed on the left side, west, of the roadway access to houses on the north side of Appleford Road.



Stile into field.
Pedestrians can avoid the stile by slipping round against the fence.
The stile is beside a metal 5 bar gate, normally locked.



View back toward the stile on FP 373/02, at the end of the roadway access to houses on the north side of Appleford Road



The unmade path cross the field on the north west boundary.
The fenced hedge-line is along the river bank. There is a gate in this fence leading to the fishing rights belonging to Harwell Fishing Club.

The sparse hedge line in the distance marks the edge of the second field.



View back along the unmade FP, 373/02, across the field on the north west boundary and right bank of the river Thames or Isis.



FP 373/02, View approaching the second field and the houses on the Abingdon Road approach to Sutton Bridge come into view.



FP 373/02, gated access in the fence, leading to the fishing rights belonging to Harwell Fishing Club along the right bank of the Thames/Isis below Mill House.



The second field with a view to the Abingdon Road. The hedge-line on the left Peters out giving way to nice views along the river with a collapsed bank created by cattle.



One of several nice views of Sutton Bridge.



View upstream from 373/02, showing the island belonging to Mill House on the left and Sutton Pools beyond the island.



View of one of the Pill Boxes, on the north bank, built during WW2 to protect the area, which was a major logistics centre.



The view upstream, in the centre is the island belonging to Mill House and created by the mill stream and lock system. A carved tree trunk still stands on the end of the island but the carving has rotted away.



Steps and kissing gate to Abingdon Road, near Sutton Bridge.



Kissing gate and steps from Abingdon Road, near Sutton Bridge.



Concealed finger post on Abingdon Road.



View upriver from Sutton Bridge



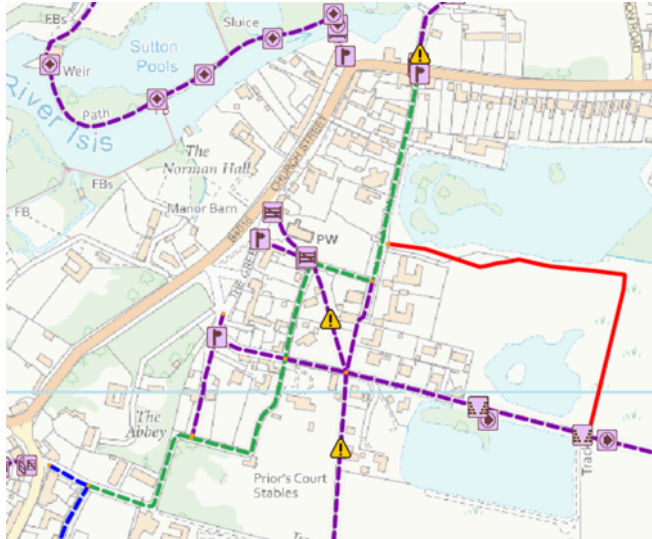
View downriver from Sutton Bridge



Sutton Bridge is a stone structure built in 1807 with three arches over the main river and two smaller ones across the flood plain. An extension was built in 1809 across the Culham Cut, just below Culham Lock. It was originally a toll bridge and replaced an earlier multi-arch bridge over the original weir and a ferry at this site. It is Grade II listed.

Picture from Francis Frith Collection. https://www.francisfrith.com/sutton-courtenay/sutton-courtenay-the-bridge-1890_27003

Path reference	373/03	Designated	Public Bridleway (BR)
From	From Appleford Road adjoining "The Fish" Inn, generally S and W across FP 373/12, past south end of FP 373/11		
To	BOAT 373/10 at West House (Previously S gate of the Abbey).		



- Bridleway (BR) 373/3 is indicated by the green dashed line

Description There are two distinct parts of this, 824m, path. It is known as All Saints Lane north of Churchmere (FP 373/12) and this section is part concrete, part gravel access to housing and is in practice an unrecorded BOAT and is possibly a private road. The section south of FP 373/12 borders Prior's Court and The Abbey, running between the two and is a mostly narrow often muddy unmade Bridleway apart from the short section south of the Abbey which is metalled and is an access road to Cross Trees Farm.

Function Although designated as BR the section north of FP 373/12 (Churchmere Rd) provides the access to houses on All Saints Lane. The section south of FP 373/12 (Along the W boundary of Prior's Court) is well used by villagers connecting the High St with the northern part of the village including the church and the village green.

Comments



Left side of the Fish PH from Appleford Rd.

Fingerpost on LHS of route indicating Bridleway.



View south along the concrete roadway servicing the housing and leading to the lakes on the left.



Lay-by to the rear of the churchyard – protected by posts which extend to the first corner of the route where it turns right following the churchyard wall.



Path follows the churchyard wall to the right. Route now changes from concrete to compacted gravel.



View north, back to the protected layby and the path continues on the left (in this view).

The route immediately in front is part of 373/7 which starts where BR373/3 turns.



The view south from the gate on the south side of All Saints Church yard, showing, on the right, the continuation of All Saints Lane, Where it turns back to the south and the narrow path on the left is the continuation of FP 373/6 from the church yard



View from All Saint's Lane, 373/3, of FP 373/6 where it crosses All Saint's Church yard.



View from All Saint's Lane, 373/3, of 373/5 via the offset barrier on the left and 373/6 through the church yard, the paths on the south side of All Saint's Church.



Herbert Henry Asquith grave in All Saint's Church yard. Eric Arthur Blair's (George Orwell) grave is also nearby.



View south from point where 373/3 crosses 373/6, path at All Saint's Churchyard gate.



View south just before the path crosses Churchmere Rd, 373/12. The house on the right is Calan Has and is opposite the entrance to Prior's Court. 373/3 continues south and then follows the boundary of Prior's Court.



View south along the boundary wall of Prior's Court, from junction between Churchmere, 373/12 and 373/3. 373/3 continues south of Churchmere as light gravel or an unmade path and is not suitable for vehicles beyond this point.



The light gravel/unmade path follows the boundary of Prior's Court, south then west and can be muddy when wet.



Looking north along 373/11, from the south end of the path at its junction with 373/3 toward The Green.



View east along 373/03, from the south end of FP 373/11. Prior's Court Stables are on the right, south side.



View south towards the entrance to Crosstrees Farm. The chainlink fence on the left is the boundary of Prior's Court. The land on the right, west, is the Abbey.

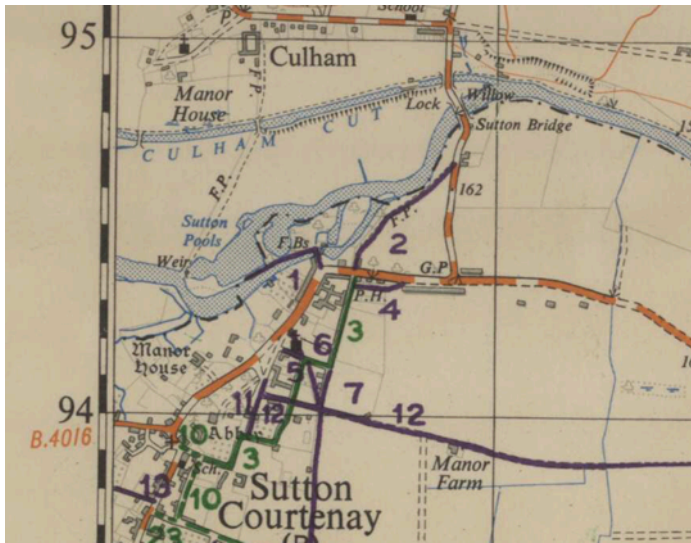


Entrance to Crosstrees Farm on corner of 373/3.



View, east, towards Cross Trees Farm entrance. The Definitive Statement notes Bridleway 373/3 finishes at South Gate of Abbey, which no longer exists. Two houses, 'East House' and 'West House' now occupy this parcel of land. The Bridleway, being private land and not open to all traffic resulted in the entrance to West House being relocated to the corner of 373/10 a Byway Open to All Traffic (BOAT).

Path reference 373/04 **Designated** Extinguished
From Extinguished 1974. All Saint's Lane, behind the Fish, east
To Appleford Road



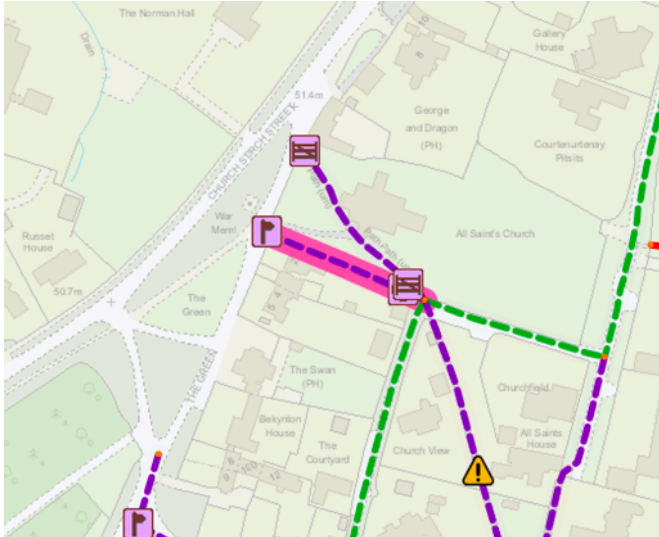
- FP 4, Extinguished, can be seen on this 1956 version of the Definitive Map

Description An extinguished path that used to run from the Fish, All Saint's Lane, behind the houses on Appleford Road before joining Appleford Road.

Function Extinguished 1974

Comments Extinguished 1974. The picture shows the 1956 Definitive Map

Path reference 373/05 **Designated** Public Footpath (FP)
From From junction of BR 373/3 and FP 373/6, SE of Church (Churchyard gate on S. boundary) WNW
To The Green by S.W. gate.



- FP 373/5 is highlighted in pink

Description This narrow gravel, 69m, path between All Saints Lane and The Green, is on the south side of All Saints Church.

Function Provides a link between All Saints Lane and The Green.

Comments Although well used it is sometimes overgrown and the subject of frequent complaints.



View of 373/5 from village green looking east along south wall of All Saint's Churchyard.



View of 373/5 from south side of All Saint's Churchyard, near junction with 373/6 and 373/3, looking west.

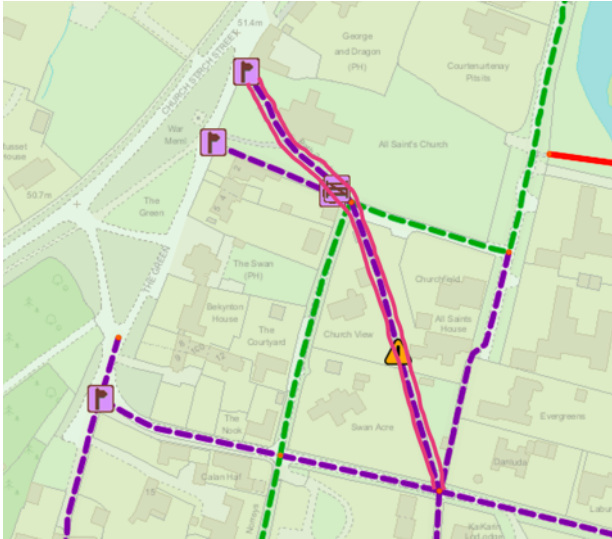


View from All Saint's Lane, 373/3, of 373/5 via the offset barrier on the left and 373/6 through the church yard, the paths on the south side of All Saint's Church.



Herbert Henry Asquith grave in All Saint's Church yard. Eric Arthur Blair's (George Orwell) grave is also nearby.

Path reference	373/06	Designated	Public Footpath (FP)
From	The Green at NW corner of the Churchyard (Churchyard gate) SSE across Churchyard and BR 373/3		
To	Churchmere Road at junction of FP 373/7 and FP 373/12.		



- FP 373/6 is outlined in pink

Description Section 1, NE end, is a, 78m, path SE across the All Saints Church yard. Section 2 (373/6/20) is a narrow, 137m, ballast path between All Saints Lane and Churchmere Road. Although well used it is sometimes overgrown and the subject of frequent complaints.

Function Links Church Street, north of The Green, with Churchmere Road FP 373/12.

Comments An example of the many narrow lanes linking different parts of the village.



View of the gate to All Saint's Churchyard, from the village green, looking SSE at path 373/6.



Gravel path continues across All Saint's Churchyard.



Path crosses churchyard in front of porch. Graves of Lord Asquith (Prime Minister 1908-1916) , George Orwell (Eric A Blair - Author) and Franta Belsky (Sculptor) to the right – map on notice board at main church yard entrance showing location of Herbert H Asquith and Eric Blair's graves.



Herbert Henry Asquith grave in All Saint's Church yard. Eric Arthur Blair's (George Orwell) grave is also nearby.



View from All Saint's Lane, 373/3, of 373/5 via the offset barrier on the left and 373/6 through the church yard, the paths on the south side of All Saint's Church.



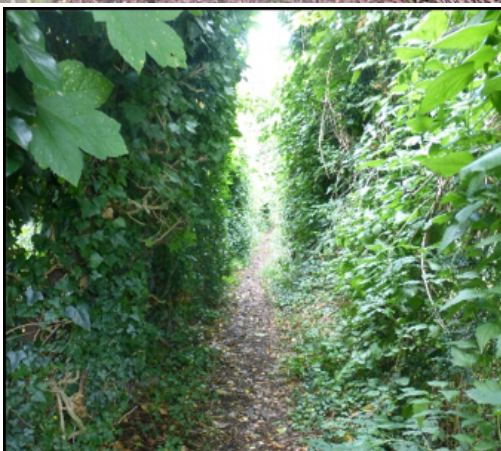
The view south from the gate on the south side of All Saints Church yard, showing, on the right, the continuation of All Saints Lane, Where it turns back to the south and the narrow path on the left is the continuation of FP 373/6 from the church yard



View of 373/6 SSE from near the junction with 373/3 and 373/5. The houses are Church View and Swan Acre on the right and All Saint's House on the left.



View of 373/6 NNW from near the junction with Churchmere, 373/12 and 373/7. The houses are Swan Acre and Church View on the left and All Saint's House on the right.

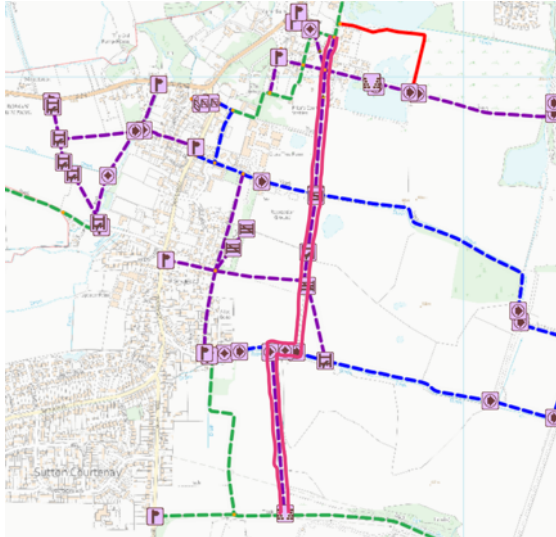


The path is narrow and often overgrown from vegetation on both sides.



View NNE from Churchmere Rd, 373/12, showing 373/7 to the right and 373/6 to the left.

Path reference	373/07	Designated	Public Footpath (FP)
From	BR 373/3, S.E. corner of Churchyard, in All Saint's Lane, leading S across FPs 373/6 and 373/12 (Churchmere Road) then S across BOAT 373/10 (Old Wallingford Way) to FP 373/8 (Doctors Lane) then SSE to BY 373/9 (Hobbyhorse Lane), continuing SSE and S		
To	BR 373/24 on the N boundary of the old Didcot Power Station site.		



- FP 373/7 is outlined in pink
- Note the deviation from the Definitive route

Description This is a, 1,640m, path between All Saints Lane, SE corner of SC church, BW 373/3 and 373/24 at the north boundary of the old power station north fence. The first three sections of this path are well used running N/S parallel and to the east of Church St, High St and Harwell Rd and are in good condition. Sections 4 (373/7/40) 274m turns SSE to Hobbyhorse Lane via a stile, however it's not currently in use as a Permissive Path runs directly S to a kissing gate also on Hobbyhorse Lane. Sections 5 (373/7/50) 548m is also unused and overgrown as there is now a new cycle track (Permissive Path, operated by Sustrans, under an agreement with the landowner) to the east and parallel being used by walkers instead of the designated path.

Function The path is an alternate route to Church St, High St and Harwell Rd. This route could be a cycle path enabling cyclists to pass through the village without using the High St and most importantly avoiding the High St/Church St (B4016) junction.

Comments An earlier version of the DMS identifies this path as known in the past as 'Didcot Path'.



Path at South end of All Saints Lane by the house Evergreens. The path starts at the SE corner of All Saints Churchyard between Orwell House and Eastwest House, where All Saints Lane turns to the West along the churchyard wall.



View NNE from Churchmere Rd, 373/12, showing 373/7 to the right and 373/6 to the left.



View south from Churchmere Rd, FP 373/12, where the path passes along the East side of Prior's Court, the wall on the right.



Passing south along the boundary of Prior's Court the path moves into open farmland, Cross Trees Farm. A fine example of the many paths linking the village via open green space.



View, North, back up the path, toward Prior's Court from Old Wallingford Way, FP 373/10, on the NE corner of the Recreation Ground.



View, South, down FP 373/7, from Old Wallingford Way, FP 373/10, NE corner of the Recreation Ground. The two gas fired power generation plants known as Didcot B power station can be seen on the horizon, at the southern end of the parish. Since the landfill raised the level of the ground to the east the path becomes boggy in winter.



View north from the south east corner of the Recreation Ground, along FP 373/7, across Old Wallingford Way toward the houses on Churchmere Road.



View south west from FP 373/7 junction with the dog walkers path, near the south east corner of the Recreation Ground. Note the Village Hall at the far side of the flooded field (Feb 2021).



View south from the south east corner of the Recreation Ground, along FP 373/7. Note the poorly maintained ditch to the east of the path resulting in a boggy flooded path (Feb 2021).



This is the view looking south on FP 373/7. The mound between the fences on the left is the bridge over the ditch. This is the Public Right Of Way. Over the bridge the PROW, FP 373/7, continues South toward the chimneys visible on the horizon. This path is disused, the landowner has provided an alternate route continuing south along the hedgerow to Hobbyhorse Lane, Byway 373/9.



This farm gate and kissing gate is on the north side of Hobbyhorse Lane, FP 373/9, but is not the official Public Right of Way. The PROW junction with Hobbyhorse Lane is further east but has fallen into disuse, a broken stile is still visible in the overgrowth.



The path, FP 373/7, joins the east/west path, Byway 373/9, Hobbyhorse Lane, moving W for 180m, passed the Hanson Way Cycle Track (Permissive Path) before continuing south parallel with the Hanson Way CT.

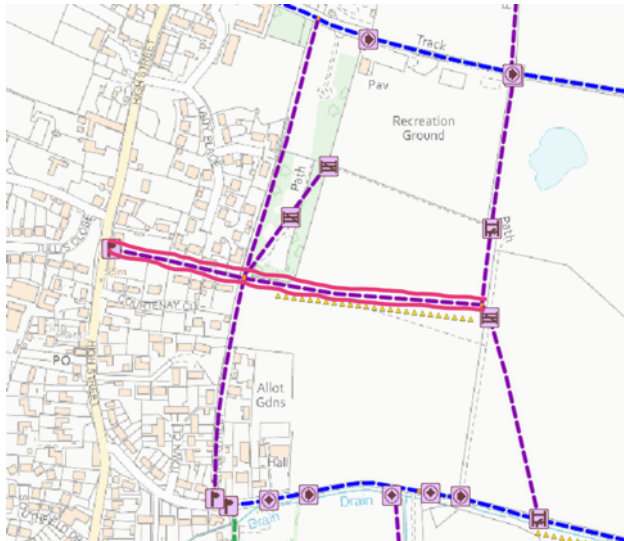


The view west from the south end of the path, near where it meets Bridleway 373/24 at the old Power Station Fence.



South end of the path where it meets Bridleway 373/24 at the old Power Station Fence.

Path reference 373/08 **Designated** Public Footpath (FP)
From High Street at Sutton Courtenay House (between 53 and 55 High St) E across FP 373/27
To FP 373/7, S of Recreation Ground.



- FP 373/8, Doctors Lane Path, is outlined in pink
- Note the yellow hazard markers as the landowner rarely reinstates the path after working the land

Description Doctors Lane. Well used narrow, 463m, unmade path off the High Street, between 53 and 55 High St, linking it to FPs 373/27, 373/30 and then on to 373/7. A typical example of the many lanes and farm paths in SC.

Function This narrow dirt/ballast path connects the High Street with FP 373/7 and the paths to the east of the conservation area and provides access to the Rec, via path 373/30.

Comments The 1805 Enclosure award and an earlier version of the DMS identifies this as known in the past as 'Doctors Lane Path', with a breadth of 4 feet.



Doctors Lane Path, identified in the 1805 Enclosure award with a breadth of 4 feet.



View from High St, between No.s 53 and 55, looking East.



Offset barriers approximately half way along the section of the path between the houses.



View east from the point where Doctors Lane emerges from the houses and crosses FP 373/27. Path 373/30 starts here and runs NE to the SW corner of the Rec.



Doctor's Lane Path, 373/8 continues directly across the farmed field toward a galvanised gate in the hedge on the far side.



View south from Doctor's Lane Path, 373/8. The housing at the top of Frilsham St is visible. There is a waste bin half way along this section of path, on the field side.



At the east side of the field there is a galvanised gate in the hedge, leading through to the N/S FP 373/7.

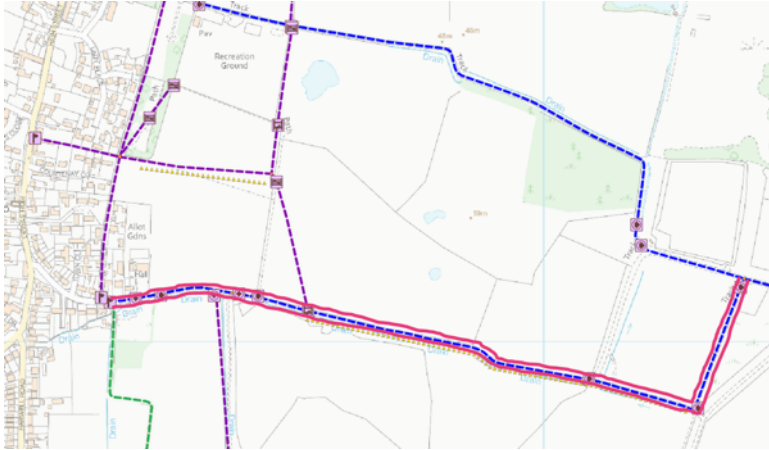


Looking back from the other side of the gate, FP 373/7, Doctor's Lane Path crosses this field. Doctor's Lane Path is identified in the 1805 Enclosure Award as a foot path with a breadth of 4 feet.



View west from FP 373/7, The gate into the field is the east end of Doctor's Lane Path, 373/8. The path crosses the middle of the field and passes through the gap between No.s 53 and 55 on the High Street.

Path reference 373/09 **Designated** Byway Open to All Traffic (BOAT)
From South end of Frilsham Street (FP 373/27) E, E.S.E. and N.N.E.
To Old Wallingford Way (Upper Wallingford Road) (BOAT 373/10).



- BOAT 373/9, Hobbyhorse Lane, is outlined in pink
- Note the yellow hazard markers as the path is boggy along this section

Description Hobbyhorse Lane, this, 1,429m, BOAT, was a mostly metalled (the east west section) and should be open to all traffic but sections were excavated by Thames Water in 2018 and have never been properly reinstated. There are haphazard chunks of broken concrete, making this well used path dangerous even when dry. The section where it turns N/S and approx 200m of the E/W section before this (373/9/30) is no longer useable by 'All Traffic'. It appears to have been damaged by construction activity and there are pipes, reported to belong to either Infinis or FCC, criss-crossing the path making it more hazardous.

Function There is evidence that all of the E/W section of this path was once metalled and was a farm access road, but parts of it have been allowed to deteriorate and it is now only suitable for walkers using it to link with numerous other formal and informal paths. It links with 373/10, a BOAT, creating a circular path to the east of SC.

Comments An earlier versions of the DMS and the 1805 Enclosure Act identifies the BOAT as 'The Upper Wallingford Road' now know as 'Hobbyhorse Lane'. It was also formerly called Pulpit Lane. It leads to out to open countryside along the ancient track to the former open fields, though now these are characterized by poorly reinstated landfill and gravel pits.

The landfill site to the north of section 3, 373/9/30 is substantially higher than the BOAT, circa 8m, so that instead of draining into the ditch on the south side of the BOAT, run off water drains on to the BOAT, which is badly rutted such that it no longer drains in to the ditch. This is a direct result of the land management of the fields to the north of 373/9/30 and lack of maintenance by OCC. If properly repaired paths 373/9 and 373/10 will create a circular route for walking, running and cycling.

This path is also a possible route for a cycle track linking SC with Appleford and on to north Didcot and Wallingford, see comments on 373/10. At the junction where the path turns N/S it meets the FCC Environment/Power Stn Spine Road (service road). If permitted or adopted, this road could link to the new cycle path running E/W along the north boundary of the power station site and enable direct access to Didcot and the BR station there, an alternate route for the NCR 5 National Cycle Route, avoiding High St,

Harwell Road, Sutton Courtenay Lane and the dangerous Milton Road to Didcot.

The schedule of 'Changes to the Definitive Map & Statement of Public Rights of Way since 21 February 2006' Dated 8 Nov 2017, Remarks: "Set out in the Sutton Courtenay Enclosure Award 1804 as a public carriage road 40 ft wide". The Act is actually 1805 but the map is 1804 and was drafted by George Barnes of Andover (Hants.) covering Sutton Courtenay & Sutton Wick.



View north from the end of FP 373/27 at its junction with BOAT 373/9 on the south east corner of Frilsham St.



Hobbyhorse Lane, BOAT 373/9, starts at the corner on Frilsham St where it turns north, just before Christchurch Way, Bridleway 373/25, on the south side. The lane continues east for 1.4 km before turning north and joining up with Old Wallingford Way, BOAT 373/10.



The Village Hall is on the north side of Hobbyhorse Lane, BOAT 373/9, just after the junction with Christchurch Way, Bridleway 373/25, on the south side.



View east, of Hobbyhorse Lane, BOAT 373/9, just to the east of the Village Hall. This section is an example of how the entire lane used to be. Earlier versions of the Ordinance Survey Maps show the lane as a high point in the area, at 53m OD. The ditch on the south side would have protected the lane and the fields to the north would have drained toward the River Thames.



View east, from circa 230m along Hobbyhorse Lane (HHL), BOAT 373/9, near the junction with FP 373/7/50 (south) the last section of this path. The Hanson Way Cycle Track, starts on the south side about 10m beyond the junction with 373/7/50. The two paths run together for about 150m to where FP 373/7/40 (north) joins at a disused stile on the north side of HHL.



View, south, of the last section FP 373/7/50. The unmade path runs parallel to the Cycle Track but on the west side of the ditch and with better views across the fields south of Hobbyhorse Lane and links HHL to Bridleway 373/24.



View, south, of the entrance to the Hanson Way Cycle Track Permissive Path, to Didcot.



View west back along first section, 373/9/10, of Hobbyhorse Lane. The Hanson Way Cycle Track (Permissive Path) to Didcot, is on the south side. The waymark for FP 373/7/50 is on the south side just past the Cycle Track. The Village Hall is visible, right centre distance.



This farm gate and kissing gate is on the north side of Hobbyhorse Lane, FP 373/9, but is not the official Public Right of Way. The PROW junction with Hobbyhorse Lane is further east but has fallen into disuse, a broken stile is still visible in the overgrowth.



View from the north side of the kissing gate of Hobbyhorse Lane, FP 373/9, but the gate is not the official Public Right of Way. The PROW junction with Hobbyhorse Lane is further east but has fallen into disuse, a broken stile is still visible in the overgrowth.



View back west along Hobbyhorse Lane, FP 373/9 towards the Village Hall. The PROW junction with 373/7 is via the broken stile still visible in the overgrowth on the north side.



View back west, just after the dog-leg (double bend). Deeply rutted with slabs of broken concrete, remnants from the concrete roadway broken up by Thames Water in 2018.



Broken slabs of concrete along BOAT 373/9, not reinstated after works by Thames Water.



View east along Hobbyhorse Lane, BOAT 373/9. The monitoring points for the landfill are dotted along the PROW and the damage is largely due to the vehicles used to access the monitoring points resulting in the deep ruts.



Hobbyhorse Lane, BOAT 373/9 is criss-crossed with large and small bore pipes to do with gas extraction from the landfill site to the south, these have now, 2020, been buried.



The sections of BOATs 373/9, Hobbyhorse Lane, toward the eastern end were almost blocked with overgrowth during the summer of 2020 but the overgrowth was cut back in the Autumn.



View of the south east corner of Hobbyhorse Lane, BOAT 373/9, with Spine Road (the service road belonging to the power station site) before the path turns north. Heavy machine movement along south east section where some of the larger bore pipes have been half buried.



View of Hobbyhorse Lane, BOAT 373/9, near where it turns north before reaching the Spine Road (the service road belonging to the power station site). FCC Environment recycling plant is visible at the end of the path and some of the larger bore pipes, crossing the path, have been half buried in the foreground.



View of the some of the large bore pipes half buried on Hobbyhorse Lane, BOAT 373/9.



Pipes laying along N/S section and path overgrown from side vegetation.



Some parts of the N/S section were completely overgrown (2020) and discarded pipes were left, visible in background.



BOATs 373/9 and 373/10, Hobbyhorse Lane and Old Wallingford Way, meet at the FCC Environment recycling plant.



View of the FCC Environment composting area from the junction of BOATs 373/9 and 373/10, Hobbyhorse Lane and Old Wallingford Way.



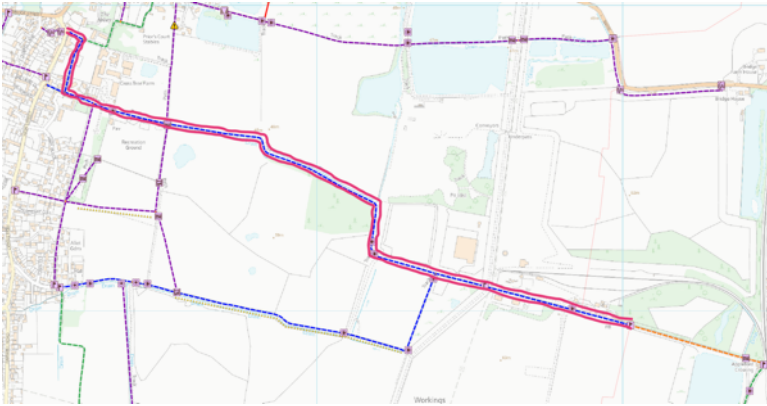
View south of BOAT 373/9, Hobbyhorse Lane from just south of the point where it joins 373/10, Old Wallingford Way. The chimney's of Didcot Power Station are visible at the southern end of the parish.



View south, of the north east end of BOAT 373/9, from Old Wallingford Way, near FCC Environment recycling plant. The right of way is between the two large bushes and is deeply rutted.

Path reference	373/10	Designated	Byway Open to All Traffic (BOAT)
From	North end of High Street at "The Croft", leading E, S and generally ESE		
To	Appleford Parish boundary W of Appleford Railway Crossing, near Radcot Farm (The Wallingford Lower Road).		

- BOAT 373/9, Old Wallingford Way, is outlined in pink



Description	<p>Old Wallingford Way. Designated as a Byway Open to All Traffic (BOAT). This, 2,379m, byway is metalled (concrete) between BOAT 373/23 (the link with the High St) and the dogleg at SU 5082 9356 but the remainder of section 373/10/50 has been allowed to deteriorate and it is now mostly used by walkers or abandoned in favour of a farm track that runs parallel and circa 20m to the north.</p>
Function	<p>A lane that in the past linked The Abbey in SC with Wallingford. This path now links with 373/9 and a Permissive Path to the south east corner of the Millennium Common to create two popular circular routes for walkers.</p>
Comments	<p>An earlier versions of the DMS and the 1805 Enclosure Act identifies the BOAT as 'The Wallingford Lower Road'. The 1805 Enclosure award also identifies The Wallingford Lower Road and The Wallingford Upper Road (now Hobbyhorse Lane - 373/9) as 40 feet wide Carriage Roads. Both of these BOATs were identified on Ordinance Survey Maps as high points, at 52m and 53m respectively, prior to the gravel and landfill activities.</p> <p>The landfill site to the north of section 5, 373/10/50 (between SU 5082 9356 and SU 5119 9335) is substantially higher than the BOAT, a new ditch has been dug on the south side of this section of the BOAT and the old ditch on the north side has been filled in/ abandoned, instead of draining into the ditch, now on the south side of the BOAT, run off water drains on to the BOAT, which is rutted and lower than the sides of the ditch. This is a direct result of the land management of the fields to the north and south of 373/10/50 and lack of maintenance by OCC. If properly repaired paths 373/9 and 373/10 provide a circular route for walking, running and cycling.</p> <p>This path is also a possible route for a running/cycle track linking SC with Appleford (via the railway crossing) and on to north Didcot and Wallingford. In cooperation with Appleford PC the track could be used by cyclists to access the BR Stn in Appleford. At the Appleford Parish boundary it continues as 106/4 for 455m to the level crossing on the B4016 south end of Appleford. The Appleford path is currently Defined, on the DMS, as a Restricted Byway, however, this is at odds with the fact that it is a two lane tarmac road</p>

used by FCC Environment to access their site from Didcot. From the Appleford level crossing (junction with B4016) the path (road) joins 106/3 a Designated Bridleway but still a one/two lane tarmac highway, going SSW for 971m to the Didcot (Ladygrove) boundary.



Sutton Courtenay Enclosure Award 1805 identifies Wallingford Lower Road and Wallingford Upper Road as 40 feet wide Carriage Roads. These Carriage Roads are, respectively, Byway Open to All Traffic (BOAT) 373/10 and BOAT 373/9, now known as Old Wallingford Way and Hobbyhorse Lane.



373/10 Starts from The Croft on the High Street.



The Croft is at the north end of the High Street near the junction with Brook st and Church St.



View back to the start of the path from where the South Gate of the Abbey used to be.



The Byway (BOAT) 373/10, turns south, right, at the point where the South Gate to the Abbey used to be. The land was sold and is where West House now stands, built 2012/13. Bridleway 373/3 starts at this point and continues east to Cross Trees Farm before turning north and eventually joining All Saints Lane.



View, east, towards Cross Trees Farm entrance. The Definitive Statement notes Bridleway 373/3 finishes at South Gate of Abbey, which no longer exists. Two houses, 'East House' and 'West House' now occupy this parcel of land. The Bridleway, being private land and not open to all traffic resulted in the entrance to West House being relocated to the corner of 373/10 a Byway Open to All Traffic (BOAT).



The path continues south behind the houses on the High Street until it reaches Old Wallingford Way, formally The Wallingford Lower Road.



View south along Byway 373/10, south of the Abbey where it narrows due to undergrowth as a result of the lack of maintenance by OCC.



Byway 373/10 Junction with Byway 373/23 (Old Wallingford way) joining from right. 373/10 turns left, east, at the junction.



View from Old Wallingford Way, Byway 373/10, taken Dec 2020. The path was excavated to allow Magnox to remove a pipe in 2019. As a result of the work the path can now be muddy, made worse by the use of wood chips, which are already rotting adding to the problem.



View back toward Old Wallingford Way with waymarks for Byway (BOAT) 373/10, which is where FP 373/27 starts.



On the junction of 373/10, Old Wallingford Way, and FP 373/27 in the south east corner is the Parish Cemetery.



Entrance to Recreation Ground Carpark. Byway 373/10 continues east along the north boundary of the Rec.



View west along the section of 373/10, Old Wallingford Way, north of the Recreation Ground car park. The entrance to the village cemetery can be seen and above it one of the properties within Lady Place. FP 373/27 runs between the cemetery and Lady Place.



As the Byway, 373/10, passes the north east corner of the Recreation Ground it crosses FP 373/7 and continues east.



Kissing gate, from Byway 373/10, at the north east corner of the Rec, where the skate park can be seen behind the gate.



Old Wallingford Way, view east from N/E corner of the Rec.



View, North, back up the path, toward Prior's Court from Old Wallingford Way, FP 373/10, on the NE corner of the Recreation Ground.



View, South, down FP 373/7, from Old Wallingford Way, FP 373/10, NE corner of the Recreation Ground. The two gas fired power generation plants known as Didcot B power station can be seen on the horizon, at the southern end of the parish. Since the landfill raised the level of the ground to the east the path becomes boggy in winter.



View across restored landfill site south of Byway 373/10 with the chimneys of the Didcot B gas fired power Station in distance at the southern end of the parish.



View north from BOAT 373/10, Old Wallingford Way, across fields belonging to Cross Trees Farm toward 373/12, Churchmere Road. FP 373/7 is delineated by the fence across the field between these main east/west paths. The houses are a group of three identical houses on Churchmere Road. The farm buildings to the left belong to Cross Trees Farm.



View west along 373/10, Old Wallingford Way toward the Recreation Ground on the left and Cross Trees Farm buildings on the right.



The Byway, 373/10, doglegs right then left and deteriorates markedly. Many people continue straight on, east, to a track across the field, which runs parallel to the Byway and is in slightly better condition. There is also a path to the left, north, between the fields.



The path to the north is not an adopted path but merely a field edge leading to 373/12 at the western entrance to the Millennium Common but popular with dog walkers.



View back toward the village from Old Wallingford Way. The barns of Cross Trees Farm can be made out in the distance. One of the many landfill gas monitoring points can be seen in the hedgerow on the left foreground. This section of the BOAT is concrete.



View west along BOAT 373/10, Old Wallingford Way, from the south west corner of Horseshoe Field. This is the end of the concrete section. The path joining from the right is an unmade unregistered path along the west side of Horseshoe Field.



View back west toward the dogleg in the path with the landfill drainage ditch on the south, left, constructed circa 2015.

At the end of the concrete section of Old Wallingford Way, 373/10, there is a dogleg in the path, south then east. The remaining east/west section of the path is badly damaged, apparently when the ditch to the south was constructed to protect it from the landfill site to the south.



View of 373/10, east, from just passed the dogleg in the path. There are supposed to be ditches on both sides of the BOAT but only the one on the south, right, remains and this is not well maintained.



Another view west from 373/10 showing one of the many landfill monitoring points. The pulverised fuel ash (PFA) used as landfill has raised the area circa 8 to 10 meters above the path, the path used to be the high point.



View east along BOAT 373/10 where the roof of the FCC Environment recycling building is just coming into view on the horizon. The alternate path, circa 20m to the north can also be seen. There is an abandoned/disused ditch between these alternate routes which used to protect the official Public Right of Way, a Byway Open to All Traffic, from being waterlogged.



View of 373/10, Old Wallingford Way, back, west, from the end of the east/west section just before the path, 373/10 turns south. Note the fence with barbed-wire fixed on the face of the posts. There used to be a ditch to the right, north, of the path, providing drainage, but it has been abandoned.



View of 373/10 east where it turns right, south, and crosses the culvert for the drainage ditch installed 2015 as part of the permitted landfill operations. Note another gas monitoring point on the left of the path. A Permissive Path crosses the field north from here to the south east corner of the Millennium Common.



From Byway 373/10 there is a Permissive Path, part of the minerals and waste planning consent since 2007, going north around the east side of the field (Horseshoe Field) to the south east corner of the Millennium Common. Very popular with walkers as it creates a circular route on the east side of Sutton Courtenay.



View west along Byway 373/10 (Pole and wire fence) the track running parallel to the BOAT used when the BOAT is to boggy but can itself become boggy. The view is from the Permissive Path, going north around the east side of Horseshoe Field, toward the south east corner of the Millennium Common.



View south along Byway 373/10 where it turns south and crosses the culvert over the ditch. The view is from the south end of the Permissive Path, going north around the east side of Horseshoe Field.



View of 373/10 south where it turns right, and crosses the culvert for the drainage ditch installed 2015 as part of the permitted landfill operations.



View of 373/10 south, The tall chimney on the Didcot Power Station site is just visible at the southern end of the parish.



View of 373/10, Old Wallingford Way, north showing the section that floods after any rainfall. There are ditches on both sides but the grips are not maintained so the water does not drain away.



View south along N/S section of Old Wallingford Way, 373/10, 24 June 2020, after long dry spell but still water lying in the path. Leachate tank (part of the landfill management) on the PROW in background.



View, north, of Old Wallingford Way from the south west corner of the FCC Environment composting area, near the FCC leachate tank, which is on the path, November 2020. The waymark is visible on the left of the path.



View, east, along Old Wallingford Way, south of the FCC composting area, near its entrance. FCC Environment leachate tank on the right, which is on the recorded right of way.



View north east from 373/10, by the access road to the composting area, showing the FCC Environment recycling plant.



View, back west, along Old Wallingford Way, 373/10 at its junction with 373/9, Hobbyhorse Lane, south of the FCC Environment composting area, near its entrance, visible on the right.



BOATs 373/9 and 373/10, Hobbyhorse Lane and Old Wallingford Way, meet at the FCC Environment recycling plant.



Finger post for 373/10 near junction with the Power Station and FCC Environment access road (Spine Road).



Byway 373/10 junction with the Power Station and FCC Environment access road (Spine Road). The Byway continues east along the FCC haulage road, Portway. Note the tarmac plant on the left and the gas fired power station on the right, which uses gas from the landfill sites. The FCC site offices are on the left just past the tarmac plant.

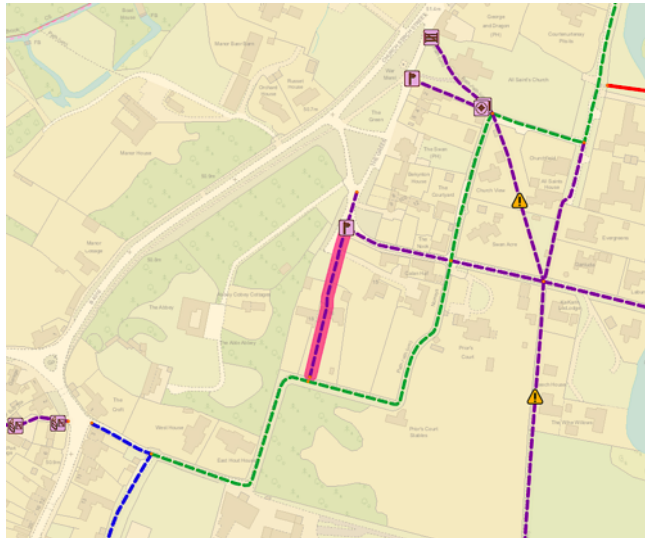


Byway 373/10 continues east along the FCC Environment haulage road, Portway to the Parish Boundary with Appleford. The FCC site offices are on the left.



View south from the east end of Byway 373/10 where it becomes Appleford's Restricted Byway 106/4

Path reference 373/11 **Designated** Public Footpath (FP)
From SE corner of The Green, SSW
To BR 373/3, E of the Abbey.



- FP 373/11 is east of The Abbey, highlighted in pink

Description Narrow ballast, 120m, path between 17 and 18 The Green. Although well used it is sometimes overgrown and the subject of frequent complaints.

Function This N/S path connects The Green with All Saints Lane to the east of the Abbey.

Comments A popular and well used connection between the green and NE SC and the High St and SW SC; without having to walk along the B4016 Church St.



From the south end of The Green the path heads south along the boundary of the The Abbey, passed Churchmere Road, FP 373/12.



The path passes between No.s 16 and 17 The Green.



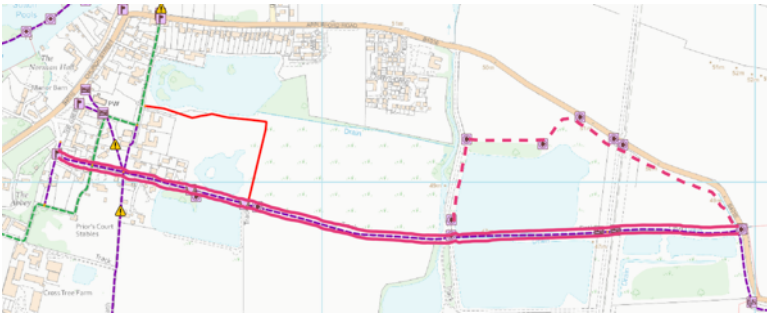
The path is narrow, gravel, with the fences/walls of No.s 16 and 17 The Green on either side.



Looking north along 373/11, from the south end of the path at its junction with 373/3 toward The Green.

Path reference	373/12	Designated	Public Footpath (FP)
From	FP 11, near SE corner of The Green, ESE and E		
To	Manor Farm and Appleford Road (Appleford Church path) and (The Kingdom of Wessex trail).		

- FP 373/12 is outlined in pink
- The pink dash line identifies the diverted section of the path around the quarry



Description The first two sections of this, 1,604m, path are on Churchmere Rd and are in good condition with nice views across Churchmere Pool. Sections 4 and 5 (373/12/40 and 373/12/50) are currently diverted (22 August 2019) around the north side of the FCC Environment quarry site, a poorly maintained narrow and overgrown, part ploughed path. The E/W section is difficult to follow. The N/S section is overgrown and the fence to the quarry road, parallel and to the east, has been broken down in places; an indication that people are using the quarry road rather than attempt the path.

Function This path links SC with Appleford and the BR Stn there.

Comments An earlier version of the DMS identifies this as known in the past as 'Appleford Church Path'.

This path is part of the 'The Kingdom of Wessex trail'. This trail links the villages of SC, Long Wittenham, and Dorchester-on-Thames. It passes a number of historic sites including the reconstructed Anglo-Saxon House of Wessex (Long Wittenham) Days Lock (Little Wittenham) the Wittenham clumps and The Abbey in Dorchester-on-Thames. https://www.sylva.org.uk/downloads/Trail_Leaflet.pdf.

The path is the most direct route from The Green in SC to Appleford Station and Appleford Church. This path could provide access to the Station for walkers and cyclists but would require a cycle store or rack.

There is a steel gate across the footpath, just to the west of the lake, forcing pedestrians to walk on private land. It should not be locked as this is a Public Right of Way and one of the access routes to the Millennium Common. At the other end of the lake, north east corner, the RoW has been narrowed (concrete block).



Path starts as a metalled road at west end of The Green.

Sign – Churchmere Road



Finger post at the west end of Churchmere Rd on the Green.



Bridleway 373/3 crosses and the path where the surface becomes gravel

Wall of Priors court to right



View south along the boundary wall of Prior's Court, from junction between Churchmere, 373/12 and 373/3. 373/3 continues south of Churchmere as light gravel or an unmade path and is not suitable for vehicles beyond this point.



Path crosses FP 373/7

Houses on either side till the road barrier

Last house on Left used to be a sports pavilion for a playing field before gravel extraction



1933 OS map showing the Pavilion, originally in the south east corner of the Playing Field.



Road Barrier – Vehicle access is restricted to Fishing Lake Members. The gate blocks the Public Right of Way forcing pedestrians to walk on private land. It is an illegal obstacle. It is an access route to the Millennium Common. From time to time a member of the OCC Countryside Access Team visits and the padlock is removed.



Sign by start of Fishing Lake



Fishing lake to right, south side of path

Access to the lakeside is restricted to Fishing Club Members



Finger post where path 373/12 narrows at the south west corner of the Millennium Common and near an unregistered path south to Old Wallingford Way, 373/10.



The path narrows at the end of Churchmere Road but then widens again along the south side of the Millennium Common



Path Narrows, restricted by a steel barrier and concrete blocks, near the south west corner of the Millennium Common. This was done many years ago, to prevent vehicles passing, by WRG or Hanson, to stop joy riders, who were creating havoc.



View north over the south west entrance to the Millennium Common via a galvanised kissing gate. This path is the subject of an application to have it recognised as a public path but it is currently claimed as a Permissive Path by the landowner FCC Environment. There should be a map of the paths across the common to left of gate but it is damaged. The lake to the left belongs to one of the houses on All Saint's Lane and unfortunately the owner has built a bund along the fence resulting in the path being boggy in winter as the surface water can no longer drain to the lake and the view is gradually diminishing as the recently planted shrubs mature.



View east along 373/12, Churchmere Road, part of the Kingdom of Wessex Trail. Taken from close to the south west gate to the Millennium Common



View south from 373/12, Churchmere Road. Taken from close to the south west gate to the Millennium Common. This is an unrecorded path down the west side of FCC Environment's Horseshoe Field toward BOAT 373/10 Old Wallingford Way. Note the chimneys belonging to Didcot B power station at the southern end of the parish. The path is boggy in winter due to the raised level of the landfill to the south and east.



View east along FP 373/12 with the Millennium Common fence on the left, north.



2nd gated entrance to the Millennium Common from FP 373/12.



3rd gated entrance to the Millennium Common from FP 373/12.



The gateway on the left is the south east entrance to the Millennium Common – Eastern end

Route crosses Hanson Access Road – Care when crossing heavy lorries use the road

The Definitive Map shows the path continuing straight on, eastwards, until it reaches the Appleford Rd, B4016, but it is currently diverted around the north side of the quarry



View from inside the 4th gated entrance to the Millennium Common at it's south east corner, across FP 373/12 south along the Permissive Path down the east side of Horseshoe Field toward the lake, with the two chimneys of Didcot B power station just visible on the horizon at the southern end of the parish.



Near the south east corner of the Millennium Common the stream from the balancing settlement pond, in Horseshoe Field, passes under FP 373/12. The stream runs along the east boundary of the Millennium Common.



View west along 373/12 from just before the 4th, south east, gate to the Millennium Common. The start of the Permissive Path, belonging to FCC Environment, runs down the east side of Horseshoe Field to the lake and then on to 373/10, Old Wallingford Way.



View north from the south east corner of the Millennium Common. The stream on the right links the lake in Horseshoe field back to the water courses and then on to the River Thames.



Diversion order 4 July 2019.



Start of Path diversion



The path continues north along the west side of the quarry, parallel with the Hanson Service Road



Where the path turns east across the south side of a farmed field it needs reinstating



Looking back, east, across the Spine Road, old power station access road. The top corner, north east, of the farmed field can be seen with the Appleford Rd, B4016 to the right



Waymark where path, 373/31, follows the B4016, Appleford Rd towards Appleford



Waymark at the end of the 373/12 diversion (note the statutory notice) where the designated Right of Way meets the Appleford Rd, B4016, at the north end of FP 373/31



View from the end of 373/12 where the designated Right of Way meets the north end of 373/31 and Appleford Rd, B4016. A large diameter black pipe crosses the path and is a tripping hazard.

Path reference	373/12 Diversion	Designated	Public Footpath (FP)
From	FP 373/12, near SW corner of The Millennium Common N then E then generally ESE around the FCC landfill site		
To	FP 373/31 Manor Farm and Appleford Road (Appleford Church path) and (The Kingdom of Wessex trail).		



- The pink dash line identifies the diverted section of FP 373/12, around the quarry

Description Sections 4 and 5 (373/12/40 and 373/12/50) are currently diverted (22 August 2019) around the north side of the FCC Environment quarry site. Temporary diversion of 659m of Sutton Courtenay FP 373/12 that runs eastwards across the Sutton Courtenay Landfill Site from OS Grid Ref SU 5130 to the B4016 Appleford Road at SU 5195 9388 to a line running for 986m around the northern (outer) edge of the Landfill Site from SU 5130 9387 northwards to SU 5134 9410, eastwards to SU 5150 9409, north-eastwards to SU 5159 9414, south-eastwards (and running parallel with the B4016) to SU 5190 9399 and south-south-eastwards to SU 5195 9388 where it joins FP 373/31 as shown on the Order map.

Function This path links SC with Appleford and the BR Stn there.

Comments A poorly maintained narrow and overgrown, part ploughed path. The E/W section is difficult to follow. The N/S section is overgrown and the fence to the quarry road, parallel and to the east, has been broken down in places; an indication that people are using the quarry road rather than attempt the path.



Diversion order 4 July 2019.



Diversion path 5 July 2020, poorly maintained. People with children using the site access road and complaining that FCC Environment security were trying to obstruct their passage.



No signage and no obvious path along the ploughed field.



FP sign but no obvious path along the B4016



Footpath signage concealed in overgrowth

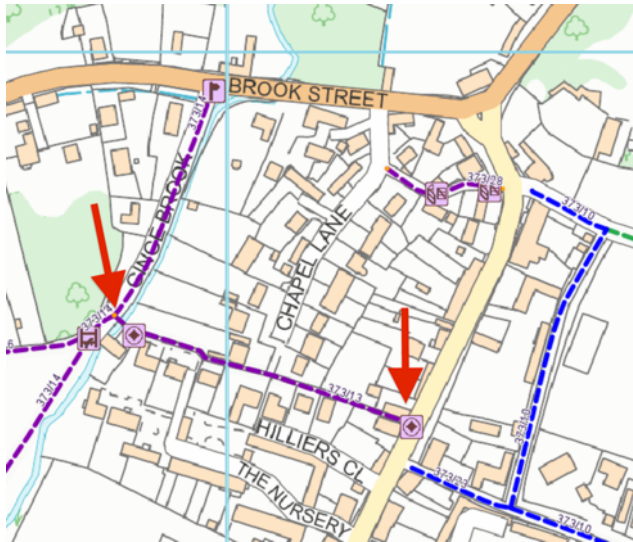


Junction of 373/12 diversion and north end of 373/31. Sign pointing south but no maintained path. Note the large black pipe running across the path.



View north on 373/31. Most of summer 2020 this path was impassable other than by determined hikers with sturdy boots and thornproof trousers.

Path reference 373/13 **Designated** Public Footpath (FP)
From High Street adjoining "The New Inn", WNW crossing the Ginge Brook
To FP 373/14 at Ginge Cottage on Ginge Brook.



- FP 373/13 the mauve dash line between the two red arrows on the map

Description The path is a narrow, 199m, ballast path between houses 44 and 44a on the High St. Although well used it is sometimes overgrown, muddy and is the subject of frequent complaints.

Function The path connects The High St with Chapel Lane and then crosses the Ginge Brook linking to FP 373/14 (Ginge Brook) and 373/16 with access on to other paths to the west of SC.

Comments An excellent example of a typical SC path leading from the High St to the farm land surrounding the village.



Path entrance on High St, at offset barrier between 44 & 46, formally 'New Inn'.



Finger post and offset Barrier at High St entrance to path



View west along path between high fences on each side



Access to path from south end of Chapel Lane



Access to path from pavement at south end of Chapel Lane

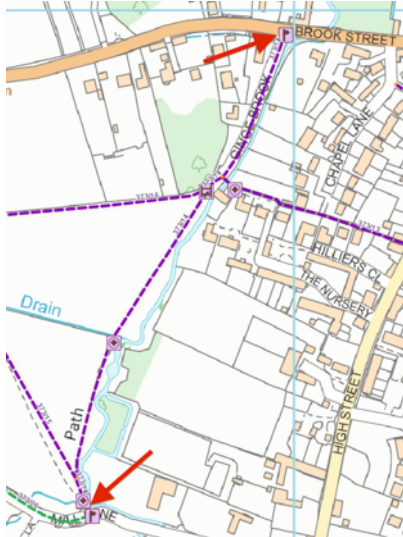


View looking east, along FP 373/13, toward the High St, across the bridge over the Ginge Brook



View looking south, along FP 373/14 junction with FP 373/13, over the bridge in front of the Mill House, No. 3 Ginge Brook.

Path reference	373/14	Designated	Public Footpath (FP)
From	Opposite Brook House, 4 Brook Street, SSW alongside Ginge Brook, passed the west end of FP 373/13, then passed east end of FP 373/16		
To	Mill Lane, FP 373/26 (Shidney Path). It joins the south end of FP 373/15 at the south end of the field.		



- FP 373/14 the mauve dash line between the two red arrows on the map

Description This, 519m, path runs SSW along the side of the Ginge Brook from Brook Street to Mill Lane. The first section (373/14/10) is metalled and apart from some signs of minor subsidence in to the Ginge Brook, it is in reasonable condition. The path then goes through a Kissing gate by the cottage, past the east end of FP 373/16, and follows the Ginge Brook around the field edge to a Stile in the hedge line. After the Stile The path enters a field laid to pasture. The field has variously had cattle and more recently Horses. The path continues to follow the Ginge past an old ford and an improvised rope swing over the Ginge before leaving the field via another Stile to enter Mill Lane. The fields often have livestock in them so it can be muddy.

A popular space with Sutton Courtenay residents during the 2020 Pandemic.

Function The path links Ginge Brook from Brook Street to Mill Lane. Along the third section (373/14/30) there is an old ford and a tree swing still used by children in the village.

Comments An earlier version of the DMS identifies this as known in the past as 'Shidney Path'.

Section 3, 373/14/30, the lower (south most field) passes an old ford on the Ginge Brook where there is a tree swing, this is a popular recreation area for village children.

This is a very popular short walking circuit around the north west side of the village along the Ginge Brook.



Fingerpost on the Drayton Road and view down Ginge Brook with the Mill House in the distance.



Ginge Brook showing damaged bank between House No. 2 and 4 Ginge Brook



View looking south, along FP 373/14 junction with FP 373/13, over the bridge in front of the Mill House, No. 3 Ginge Brook.



View looking back north, along FP 373/14 and the Ginge Brook from FP 373/13, near the Mill House, No. 3 Ginge Brook.



View looking east, along FP 373/13, toward the High St, across the bridge over the Ginge Brook



View looking south, along FP 373/14 from FP 373/13, passed the Mill House, No. 3 Ginge Brook, toward the wooden kissing gate on FP 373/14 and FP 373/16.



View west, along FP 373/16, across the Kissing Gate next to Ginge Cottage. The kissing gate is very small and in poor repair.



View back, north, across Kissing Gate next to Ginge Cottage. The kissing gate is very small and in poor repair. Note the old style finger post pointing along FP 373/16 and showing a stile, which no longer exists.



View along the Permissive Path from about halfway along footpath 373/14 on the Ginge Brook, along the hedge between the two fields. The path starts from the stile between the two fields on the Ginge Brook and goes directly west along the south side of the field on the north side of the ditch between the two fields. A post/waymark is required with signs for footpath 373/14 north and South and for the Permissive Path pointing west.



View along 373/14, south over the stile and bridge crossing the ditch between the two fields.



In this view along 373/14, The house at No. 5 Mill Lane is visible in the back ground.



Stile and bridge over the ditch between the two fields, looking back to Mill Cottage



The banks of the Ginge Brook, a popular recreation area, particularly during the 2020 Pandemic.



The open, south, field with the Ginge Brook, also known as West Brook or Mill Brook, on the left (East)



View of the rope swing over the Ginge Brook on FP 373/14. Very popular with younger people in the village.



Two paths, 373/14 & 373/15 merge before terminating at their southern end on Mill Lane



View north along footpaths, 373/14, as it follows the Ginge Brook, from the southern end near Mill Lane.



Stile to Mill Lane at southern end of 373/14 & 373/15, Drayton East Way is to the right (West) and is a continuation of Mill Lane from the Drayton Parish boundary.



Stile to Mill Lane at southern end of 373/14 & 373/15, with a view upstream along the Ginge Brook. This stile was replaced 2020 but is difficult to negotiate for less mobile people.



View back to the stile and southern end of 373/14 and 373/15 from Mill Lane



View of the bridge over a ditch, connected to the Ginge Brook at the stile on the southern end of FPs 373/14 & 373/15. The Ginge Brook can be seen flowing north.



Close-up of the Ginge Brook from the bridge over the ditch at the southern end of 373/14 & 373/15



The mill on the south side of Mill Lane is opposite the southern end of 373/14 & 373/15. Mill Lane is bridleway 373/26.

Path reference	373/15	Designated	Public Footpath (FP)
From	Drayton Rd. near 'Willowbrook' SSE passed FP 373/16		
To	FP 373/14 and FP 373/26 at Mill Lane (Abingdon Path) near Drayton East Way and the boundary with Drayton PC (Abingdon Path).		



- FP 373/14 the mauve dash line between the two red arrows on the map

Description Abingdon Path, this, 417m, unmade path crosses farmed fields from its access on Drayton Road, where there is barbed wire around the post to the east side of the stile and the stile is overgrown and in poor condition. The path is narrow and muddy. According to the Definitive Statement, "Awarded width 30ft, Inclosure Award 1804".

Function The path links Drayton Road with FP 373/16 and Mill Lane.

Comments An earlier version of the DMS and the 1804 Enclosure Map identifies this as 'Abingdon Path'.

Note, OCC is obliged by its RoWMP 2015-25 to work with others to limit restrictions and encourage responsible access and try to manage and improve the network to meet current and future needs, in particular the disabled, mobility impaired, visually impaired, the elderly and the very young. The access to this path needs improvement.

This path could be considered for a cycle path linking SC High St with Drayton Road (cycle path on north side) avoiding the dangerous junction at Brook St/High St/Church St. National Cycle Route 5 currently runs along Brook Street and High Street, but there is no cycle lane.



View of the path from Drayton Rd, the stile is to the right of the gate, concealed by overgrowth, take care to avoid the barbed wire around the post.



Closeup of Stile and Gate from the field side.

Be careful of the barbed wire and brambles in the overgrowth.



View south across the field from near the gate, the path follows the western edge of the first two fields.



View south, along FP 373/15, showing the second field with FP 373/16 on the left, east. The path continues across this second field on the western edge.



View north, along FP 373/15, showing the gap between first and second field with water trough and the western end of FP 373/16 going east.



View back, north, across the second field, note the old stile disused now the field is arable.



From the south end of the second field the RoW goes diagonally across the field to the stile in to the field to the left, east. However, in practice the walked path keeps to the field margin.



Looking back at the stile from the south east.



The path is diagonal across the pasture, this view is looking back toward the stile from the south east corner of the field near the end at Mill Lane.



Two paths, 373/14 & 373/15 merge before terminating at their southern end on Mill Lane



Stile to Mill Lane at southern end of 373/14 & 373/15, Drayton East Way is to the right (West) and is a continuation of Mill Lane from the Drayton Parish boundary.

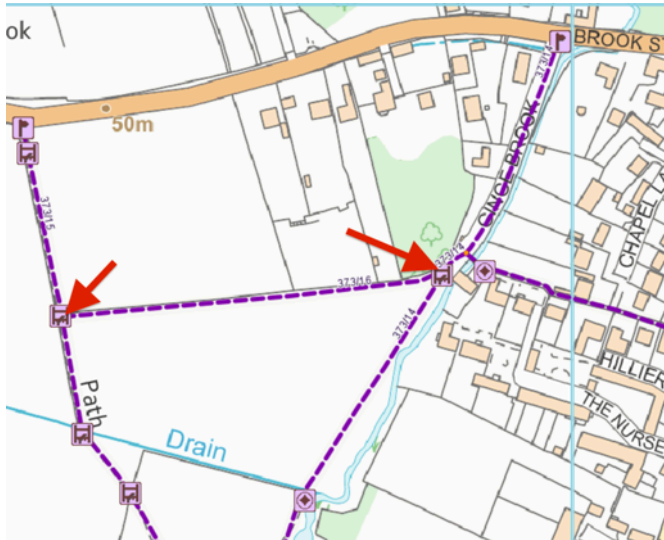


View back to the stile and southern end of 373/14 and 373/15 from Mill Lane



Close-up of the Ginge Brook from the bridge over the ditch at the southern end of 373/14 & 373/15

Path reference 373/16 **Designated** Public Footpath (FP)
From FP 373/14 near Ginge Cottage, at Ginge Brook, W.
To FP 373/15



- FP 373/14 the mauve dash line between the two red arrows on the map

Description This, 252m, path runs parallel with Drayton Road and is an unmade narrow path on the north side of an open farm field with hedgerow and a ditch to the north of the path.

Function The path links FP 373/13 from SC High St with 373/15 to Drayton Road avoiding the narrow footpath on Brook St.

Comments A well used raised but very narrow unmade path on the north side of a farmed field.

The photographs, below, tend to mostly face east, towards the Mill House as traveling west the path is toward open countryside.



View west, along FP 373/16, across the Kissing Gate next to Ginge Cottage. The kissing gate is very small and in poor repair.



View back, north, across Kissing Gate next to Ginge Cottage. The kissing gate is very small and in poor repair. Note the old style finger post pointing along FP 373/16 and showing a stile, which no longer exists.



The view back from FP 373/16 toward the kissing gate at Ginge Cottage, where it meets FP 373/14. Note the trees following the line of the Ginge Brook behind the houses along the west side of the High Street.



View east, from halfway along the path, looking toward Ginge Cottage, Sutton Courtenay.



Waymark on fence at junction of FP 373/15 and 373/16. FP 15 is straight on, north, and FP 16 follows the north edge of the field to Ginge Cottage.

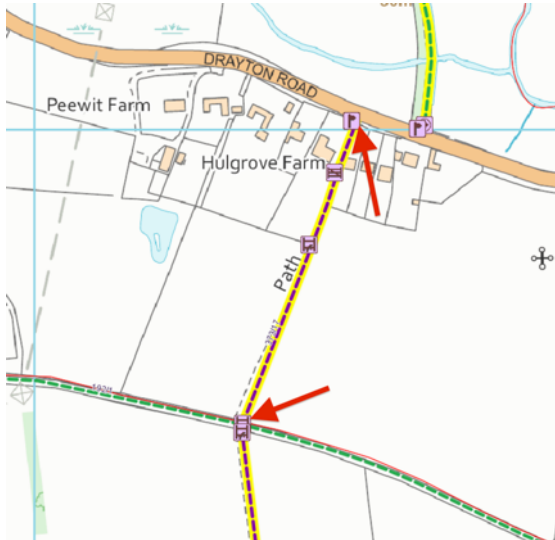


View north, along FP 373/15, showing the gap between first and second field with water trough and the western end of FP 373/16 going east.



View south, along FP 373/15, showing the second field with FP 373/16 on the left, east. The path continues across this second field on the western edge.

Path reference	373/17	Designated	Promoted Footpath (PFP)
From	Drayton Road near Dropshort Bungalows and 60m W of the Peep-o-day Lane (373/18) Drayton Road junction, SSW		
To	Drayton Parish boundary at Drayton East Way (BR 192/1, Drayton).		



- FP 373/17, part of the 'Vale Way', the mauve dash line between the two red arrows on the map and is highlighted in yellow to identify it as a Promoted Path

Description Harwell Path, part of the Vale Way (OCC 'Promoted Path') - This 274m unmade path is poorly signposted and barely discernible at the southern end, i.e. the junction with 192/1 Drayton East Way (continuation of Mill Lane). At the north end it has a stile (in poor repair at the time of inspection June 2020)

Function This footpath is part of the 'Vale Way' (an OCC 'Promoted Path') part of the section of the 'Vale Way' between Abingdon and Milton Park through the parishes of Drayton and SC. It's north end links to FP 373/18, Peep-o-day Lane, via Drayton Rd, B4016. The, 60m, section of Drayton Rd is dangerous as there are no paths along it. The south end links to Drayton's FP 192/10 and still part of the 'Vale Way'. The stile, shown on the DM, is missing.

Comments An earlier version of the DMS and the 1804 Enclosure Map identify this as as 'Harwell Path'.

The, 274m, path is very narrow and at some times of the year, when the crops are mature, it is difficult to make out the path. There is a short section between the houses on Drayton Road that has numerous holes, probably rabbit warrens. The path, part of the 'Vale Way', 'OCC Promoted Path', is linked to Peep-o-day Lane using a short, 60m, section of Drayton Road, B4016. There is no footpath along this section of Drayton Road, so following the 'Vale Way' may mean having to walk in the road, which is a busy through route, or attempt to walk on the bank, which is uneven and contains a number of trip hazards.



View east, toward Sutton Courtenay on Drayton Road, B4016, showing the finger post for FP 373/17, pointing south, noting that Milton is 2 miles. Peep-o-day Lane, Bridleway 373/18, is on the left 50m east of 373/17, making this 50m stretch of main road part of the right of way but with no way of avoiding walking in the road. Both 373/17 and 373/18 are part of the 'Vale Way' an OCC 'Promoted Path'.



View south from Drayton Road, B4016, showing the finger post noting that Milton is 2 miles. This is an OCC 'Promoted Path' and designated as the 'Vale Way'.



View of FP 373/17 between No. 91 and New House (formally part of Hulgrove Farm) on Drayton Road. This section of the path, before it opens out into the open countryside, belongs to New House but is still part of the Vale Way Promoted Path.



View of FP 373/17 over the stile, which is in disrepair, at the back of No. 91 and New House on Drayton Road. The path continues south across the open field and should be reinstated after the land is worked. The landowner has offered to instal a self closing gate in lieu of the stile if the gate is provided by the LA.

View of FP 373/17 back over the stile, in poor repair, at the houses on Drayton Road, No. 91 and New House.



View of FP 373/17 back toward the stile, at the back of the houses on Drayton Road, No. 91 and New House. This path can be difficult to make out when the field is worked and the path is not reinstated.



View north, of FP 373/17, from Drayton East Way, From the Sutton Courtenay Parish boundary on Drayton's Bridleway 192/1 toward the houses on Drayton Road.



View north, of FP 373/17, from Drayton's 192/10 on the south side of Drayton East Way, Bridleway 192/1. Courtenay Parish boundary is along the far side of the Bridleway. Note the only visible waymark is on the back of the post at the end of 192/10.



View of the only visible waymark on the back of the post at the end of 192/10. FP 373/17 continues north from Drayton's 192/10 where it crosses Drayton East Way, Bridleway 192/1.



View south from the southern end of FP 373/17 where it meets Drayton's Bridleway 192/1, Drayton East Way. Drayton's 192/10 crosses Drayton East Way and becomes Sutton Courtenay's 373/17, both are part of the 'Vale Way' Promoted Path. The path continues south before crossing the Ginge Brook on the way to Milton Village.



View east toward Sutton Courtenay Village, from Drayton's Bridleway 192/1, Drayton East Way, just before the point where Drayton's 192/10 crosses Drayton East Way and becomes Sutton Courtenay's 373/17, both are part of the 'Vale Way' Promoted Path.



View west along Drayton's Bridleway 192/1, Drayton East Way, towards Windy Ridge on the Milton Rd, just before the point where Drayton's 192/10 crosses Drayton East Way and becomes Sutton Courtenay's 373/17.



Looking south across the stile to the PROW which runs across the field to 192/1, Drayton East Way on the parish boundary and Drayton 192/10. This is an OCC 'Promoted Path' and designated as the 'Vale Way'.



Looking north at the stile leading between New House and 91 Drayton Rd.

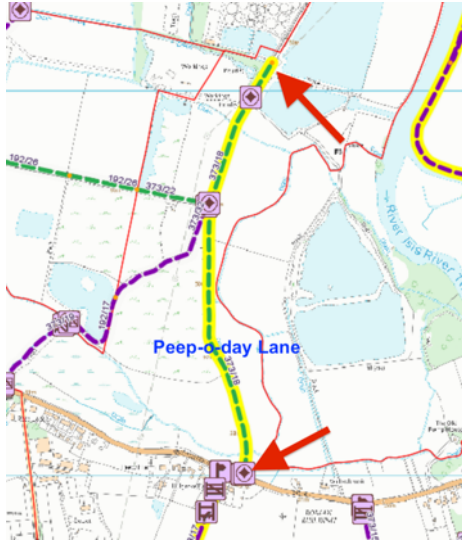


Looking north at the stile leading between New House and 91 Drayton Rd.



Looking north from Drayton 192/10 and Drayton East Way, 192/1, the path cross the field to the stile leading between New House and 91 Drayton Rd. This is an OCC 'Promoted Path' and designated as the 'Vale Way'.

Path reference	373/18	Designated	Promoted Bridleway (PBR)
From	Drayton Road opposite Dropshort, N passed FP 373/22 and 373/32		
To	Abingdon Borough boundary on Peep-o-day Lane, just south of the Thames Water site.		



- BR 373/18, part of the 'Vale Way' the green dash line between the two red arrows on the map
- The path is highlighted in yellow to identify it as a Promoted Path
- Note the thin red line identifies the parish boundary, with the parishes of Drayton to the west, Abingdon north and Culham east

Description Peep-o-day Lane. Vale Way (OCC 'Promoted Path') - This bridleway is a popular cycle lane linking Drayton Road to Abingdon. Cleared and the majority resurfaced (June 2020).

Function This bridleway (Peep-o-day Lane) is part of the Vale Way (OCC 'Promoted Path') part of the section between Abingdon and Milton Park through the parishes of Drayton and SC. Its south end links to FP 373/17 via Drayton Rd, B4016. The section on Drayton Road is dangerous as there are no paths along this section of the Road. The bridleway is also designated as a cycle track on the Sustrans National Cycle Routes (NCR) it is Hanson Way route number 5.

Comments The 1804 Enclosure Map identifies this as 'The O'day Road' now know as Peep-o-day Lane. However the 1805 Enclosure Act identifies it as Peep-o-day Road.

An upgrade to the byway, Peep-O-Day-Lane, opened in 2020, between Drayton Road and Quarry Road (approx. 700m) and the path along to the Thames Water Treatment Facility from the Quarry entrance (approx. 600m). The works include widening of the existing paths using recycled tyres to provide a flexible surface. The path has illuminated discs set into the surface to guide users at night.

Part of the BR, 373/18/10, is also a quarry road used by heavy quarry vehicles, it is dusty when dry and muddy when wet, some effort is made to clear it by the quarry company. The proximity of large quarry vehicles with walkers and cyclists is less than ideal.



Finger Post on Drayton Road. The northern end of FP 373/17, also part of the 'Vale Way', an Oxfordshire Promoted Path, starts approx 50m west on the south side of the road.



Finger Post, Waymark and Map with local information at the southern end of Peep-o-day Lane, at it's junction with Drayton Road, B4016.

Flexible surface near the southern end of the bridleway. The illuminated roundels can be seen in the surface.



Prior to 2020 a narrow, often overgrown path, has been transformed by the widening and new flexible surface.





The two improved sections of the path are interrupted by a quarry road. This view looks back, south, at the end of the south, improved, section.



The southern end of the quarry road on Peep-o-day Lane is also the junction of Bridleway 373/22, also used as a quarry road and FP 373/32 entered through this kissing gate. This is a nice path over reclaimed land, now a nature reserve, to a lake on the Drayton Parish boundary.



Bridleway 373/22 from Peep-o-day Lane west toward the Drayton Parish Boundary, where it continues as bridleway 192/26.



Take care, large quarry vehicles can be encountered on this section of the path.



This section of Peep-o-day Lane is a wide gravel quarry road. Dusty when dry, muddy when wet.



The quarry entrance is on the left, west side of Peep-o-day Lane. The path continues on the second improved section (opened 2020) with the flexible recycled tyres.



The bridleway ends at the south east corner of the water treatment works, but Peep-o-day Lane continues north towards Abingdon.

Path reference	373/19	Designated	Public Footpath (FP)
From	Drayton Rd. at Gilbourne's Farm, N.E.		
To	Drayton Parish boundary. (Gilbourn Path).		



- FP 373/19 the mauve dash line between the two red arrows on the map

Description Gilbourn Path South. This, 239m, unmade path runs NE along the bank of the drainage stream from Drayton Road, B4016, N of Gibourn Farm, where there are steps, across marsh land (flood plain) where it crosses the stream via a small narrow wooden bridge, into Drayton Parish FP 192/17 around an old flooded quarry (small lake) and then back into SC parish, where it continues NE to FP 373/32 to FP 373/18 (Peep-o-day Lane).

Function The path is one of three paths that connect Drayton Road, at Gilbourn's Farm to Peep-o-day Lane at it's junction with Gypsy Lane (FP 373/22). It is only suitable for walking. The right of the owner to erect and maintain a 1.5m wide bridle gate at SU 48872 94390 (Parish Boundary) was confirmed in recorded Changes, 9 July 2013.

Comments The 1804 Enclosure Map and an earlier version of the DMS identifies this as 'Gilbourne Path'. Some records spell Gilbourn with an 'e', i.e. Gilbourne. The sign at the farm includes the 'e' but the DMS does not.

This path, only suitable for walking, is picturesque, following the mill stream from Gilbourn Farm on Drayton Road, B4016, to the old quarry lake at the Drayton parish boundary. The path links to Peep-o-day Lane via Drayton Parish FP 192/17 and SC FP 373/32 and is an alternate route between Drayton and South Abingdon.

The mill pond is still clearly visible on the south side of Drayton Rd but the dam has been dismantled.



Fingerpost on Drayton Road, The path starts at the pavement edge opposite Gilbourn's Farm on the B4016 and descends via steep wooden steps to a kissing gate at bottom of the slope.



View back toward the steep wooden steps (no handrail) Drayton Road, B4016, at the top of the steps.



View of kissing gate from the bottom of steps near Drayton Road.



View across kissing gate and up the slope to the field, known locally as Folly Field.



The path follows the edge of the field, NE along the ditch.



View east, across the field from the path. The lake appears when the water table is high but can be dry in summer.



Metal gate and wooden stile at the north point of the field where it crosses the ditch, which is the boundary with Drayton Parish.



View back across the field, from the bridge over the ditch.



The bridge from the Drayton side. Note the missing plank, reported to OCC but no action taken.



View from Drayton Parish side showing the kissing gate before the bridge crossing into Sutton Courtenay Parish.



View of the lake on the Drayton side of the parish boundary.



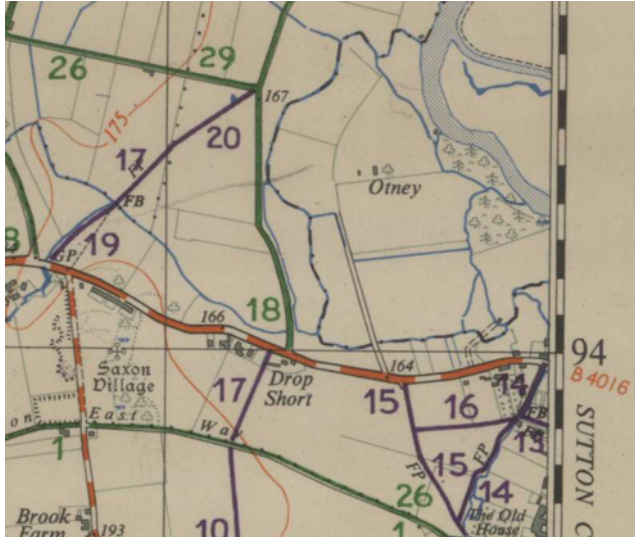
View of the lake in Drayton Parish, footpath 192/17 and between Sutton Courtenay footpaths 373/19 and 373/32.

Path reference 373/20

Designated Extinguished

From Extinguished path replaced by FP 373/32. Was from Oday Road BR 373/18 (Now known as Peep-o-day Lane) at Junction with Gipsy Lane BR 373/22, S.W.

To Drayton Parish boundary.



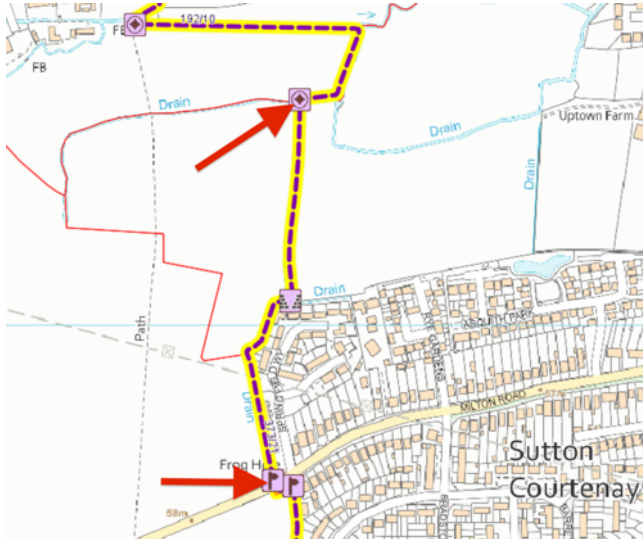
- The location of the extinguished FP 20 is clearly visible on this excerpt of the 1956 SU49 Definitive Map.
- The path was reinstated as FP 373/32, see report 32. Note BR 29 was also extinguished and later reinstated as BR 373/22, see reports 22 and 29.
- The other Sutton Courtenay paths shown have the same numbers on the 2006 Definitive Map but with the 373 prefix for Sutton Courtenay.

Description (Gilbourne Path) 373/20 Extinguished path replaced by FP 373/32. The path acrosses a landfill site, now a nature reserve, a pretty walk to a small lake in Drayton Parish. The path around the lake is Drayton FP 192/17, which links back to SC FP 373/19.

Function See FP 373/32.

Comments An earlier version of the DMS identifies this as 'Gilbourne Path' (Gilbourne with an 'e'). This earlier version of the DMS also refers to and identifies 'Oday Rd' now Peep-o-day Lane 373/18 and Gipsy Lane 373/22 (previously FP 29). Beware of the rebar sticking out and fill materials, nevertheless this is a nice path with some good views. The picture shows the 1956 Definitive Map.

Path reference	373/21	Designated	Promoted Footpath (PFP)
From	From Drayton Parish boundary SE of Drayton Mill, S to the north boundary of the Spring Field Way houses then following the western edge of the Spring Field Way development		
To	Milton Parish boundary, Milton Rd. near 'Frog Hole'.		



- FP 373/21, part of the 'Vale Way' the mauve dash line between the two red arrows on the map
- It is highlighted in yellow to identify it as a Promoted Path
- Note the thin red line identifies the parish boundary with Drayton NW and Milton SW

Description This, 524m, unmade path, along the edge of farmed fields, is part of the 'Vale Way' (OCC 'Promoted Path') it is narrow and can be muddy, has been known to flood and is suitable only for walking.

Function This path is part of the 'Vale Way' (OCC 'Promoted Path') part of the section between Abingdon and Milton Park through the parishes of Drayton and SC. Its north end links to Drayton's FP 192/10, a 815m, path along the Ginge or Mill Brook, crossing the Mill Brook at Drayton Mill, then N back to the SC parish boundary at Drayton East Way. The southern end links to Milton's FP 299/1, (planning permission has been granted to convert this path to a Cycle Track) which will links SC Milton Road with Milton Park.

Comments The Definitive Map shows the path to the east of the drainage ditch (Drain) the current path is located on the west side of the 'Drain'. The field where the Definitive Path should be has been ploughed to the edge.

There was a more direct path, to the west, running across the middle of the fields, shown on the OS map, going S from Drayton Mill FB to Moor Ditch. This path appears as FP 1 on the 1956 Definitive Map.



View at the northern end of the path looking south to the footbridge over a ditch on the Drayton/SC parish boundary.



View of the waymark on the footbridge over a ditch on the Drayton/SC parish boundary.



View back, north, across a board over the the junction between two ditches. This is the permissive path on the west side of the hedgerow. The public right of way is on the east side of this hedge but is ploughed in.



View back north from the edge of the Spring Field Way estate. This is the public right of way but is ploughed in. There is a permissive path on the other, east, side of this hedgerow.



Informal access to the path from one of the houses on Spring Field Way.



Informal access between Spring Field Way and the path behind 112 Milton Road.



The path along the fence line of 112 Milton Road.

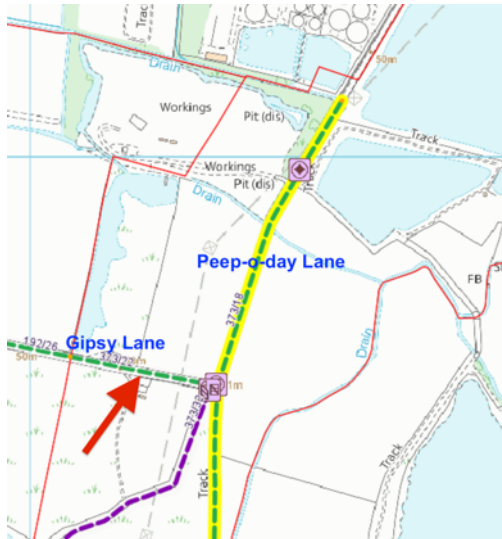


View of the path, along the fence line of 112 Milton Road, from Milton Road where it becomes Sutton Road at the build out.



View of the finger post on Milton Road where it becomes Sutton Road at the build out.

Path reference	373/22	Designated	Public Bridleway (BR)
From	Gipsy Lane. from BR 373/18 at junction with FP 373/32, W		
To	Drayton Parish boundary, where it continues as BR 192/26 for 484m, to the south of Oday Hill on to Stonehill Lane.		



- BR 373/22 a short section of the bridleway, green dash line, identified by the red arrow
- Note BR 373/22 replaced the extinguished FP 29

Description Gipsy Lane (formerly SC BR 29) is a, 194m, metalled (concrete) E/W Road from Peep-o-day Lane (Oday Hill) to the Drayton parish boundary, where it continues W as BR 192/26 for a further 484m to Stonehill Lane. It is also the haul road for sand and gravel from the pits/quarry immediately to the north (between Oday Hill and Peep-o-day Lane). This results in the road being either dusty when dry or muddy when wet.

Function Gipsy Lane, runs from Peep-o-day Lane WNW to the Drayton parish boundary where it continues WNW to link up with Stonehill Lane, then NNE to FP 192/20 then NW passed Stonehill Farm to Drayton Road B4017.

Comments There appear to be errors in the DS. It still refers to FP 20 in the Description, which has been replaced by 373/32. The DS Remarks are confusing (Formerly FPs 22 and 29. Ext. Order 19.11.1973) the DM shows the BR as 373/22, it was previously BR 29.

Although designated on the DMS as a BR it is a two lane concrete haul road for sand and gravel from the pits/quarry immediately to the north.

This is part of an alternate route to the SW of Abingdon from SC.



View west from Peep-o-day Lane, 373/18. The Bridleway continues straight for 194 metres to the Drayton Parish boundary, then continues west as 192/26 in Drayton Parish.



The southern end of the quarry road on Peep-o-day Lane is also the junction of Bridleway 373/22, also used as a quarry road and FP 373/32 entered through this kissing gate. This is a nice path over reclaimed land, now a nature reserve, to a lake on the Drayton Parish boundary.



Take care, large quarry vehicles can be encountered on this section of the path.

Path reference 373/23 **Designated** Byway Open to All Traffic (BOAT)
From High Street opposite 'Hilliers Close' E.S.E.
To BOAT 10, N of 'Lady Place'.



- This short section of BOAT is part of Old Wallingford Way and links the High St to BOAT 373/10 and is the blue dash line identified by the red arrow

Description Old Wallingford Way (the first 66m from High St)

Function Access from the High St to the Recreation Ground and Cemetery via BW 10 (373/10)

Comments This short section between the houses on SC High St (Nos. 25 & 27) connect the High St with one of the two main Byways Open to All Traffic (BOAT) 373/10. Although designated as a BOAT, it is a tarmac road accessing the village cemetery and recreation ground.



View of the short Byway (BOAT) from the High St to BOAT 373/10 at The Barn House, 66 metres Long, with a Tarmac surface. This is the first section of the 'Old Wallingford Way' towards the Recreation Ground and Car park. This was, in the past, a narrow lane linking to the much larger, 'The Wallingford Lower Road', recorded on the 1804 Enclosure Map.

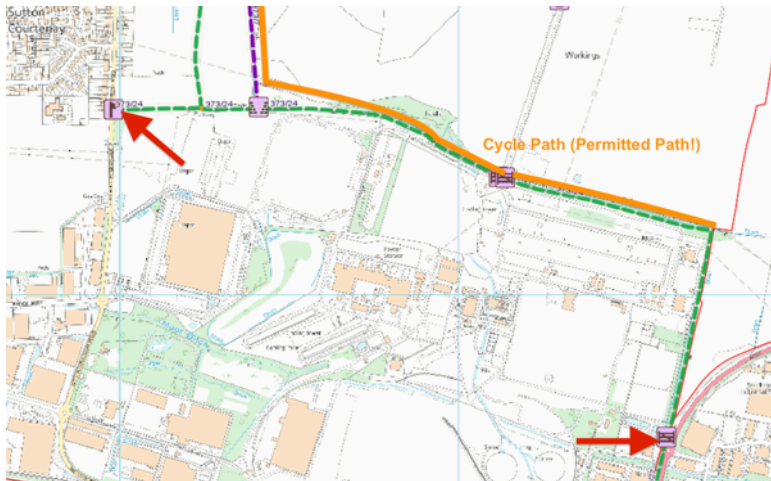


BOAT 373/23 ends where 373/10 enters from Left. Byway 373/10 is the original, 'The Wallingford Lower Road' on the 1804 Enclosure Map.



Looking back to High St from The Barn House, junction of BOATs 10 and 23

Path reference	373/24	Designated	Public Bridleway (BR)
From	Harwell Rd, near its junction with Sutton Courtenay Lane, along N. fence of the distribution centres and the power station, E, E.S.E. and S.S.W.		
To	Didcot Parish boundary at Moor Ditch, on the W side of the Didcot Northern Perimeter Road, at its junction with Didcot BR 189/27. (The Oxfordshire (District Boundaries) Order 1985 transferred part of Sutton Courtenay BR 373/24 into Didcot where it was renumbered as Didcot BR 189/27).		



- BR 373/24 the green dash line between the two red arrows on the map

Description This is a 2,461m path between Harwell Rd and the Didcot parish boundary on the A4130 at Moor Ditch. Sections 1 & 2 (373/24/10 and 20) are unmade tracks across farm fields until the path meets FP 373/7. Sections 3 & 4 (373/24/30 and 40) run parallel with and in some parts are indistinguishable from the Cycle Track (Permissive Path) that starts at Hobbyhorse Lane and ends at the Didcot Parish boundary at Moor Ditch, on the W side of the Didcot Northern Perimeter Road, at its junction with Didcot BR 189/27. The remaining E/W section of the BR, 373/24/30 and 373/24/40 before it turns south is overgrown with thicket and bramble making it impassable. Presumably because walkers tend to use the Permissive Path Cycle Track, which is better maintained.

Function This bridleway links the south side of SC, Harwell Road near its junction with Sutton Courtenay Lane to Didcot.

Comments Paths have been removed from the DMS in the past due to lack of use. The reason for the lack of use of this BR is the better maintained parallel Permissive Path Cycle Track. However the details of the arrangements regarding the Permissive Path are unknown. It is likely there is an agreement with Sustrans but it may be time limited. The PROW should be protected to ensure it is not lost. The photos show the first three sections 373/24/10, 20 and 30. The third section 373/24/30 is very difficult to navigate and the E/W part of section four 373/24/40 is impassable.



The bridleway starts from Harwell Road and goes east along the north boundary of the old power station site, at the southern end of the parish, now part of MEPC.



View east from Harwell Road, along the Boundary of the old power station site.



View back, west, toward Harwell Road with the imposing distribution warehouse on the left.



View north at junction with bridleway 373/25.



View from the power pylon, near the south end of bridleway 373/25, showing bridleway 373/24 continuing east.



Bridleway 373/24 junction with the south end of 373/7. The right of way continues along the fence boundary of the old power station and is delineated by another pole and barbed wire fence running parallel circa 6m between the two fences. The bridleway has been neglected resulting in an unmarked path deviating to the left and connecting to the Hanson way Cycle Track, a permissive path.



As the path continues east from the junction with 373/7 it is initially well used but gradually deteriorates.



View back, west, showing the distribution centre on Harwell Road.



View north from the path where the Cycle Track, a permissive path, can be seen running parallel.



A number of gates along the path allow access between the bridleway and the Cycle Track.



One of the monitoring points belonging to FCC Environmental along the path.



Branches have overgrown the path.



Beating a path through the overgrowth.



Ducking under branches.



Bridleway with Permissive cycle track in background and gate between the two.



Tree branches over path



Some of the access gates are overgrown.



The Bridleway continues on the right of the Permissive cycle track but is impassable.



Closeup of fence/gate across the Bridleway. The remaining east/west section is inaccessible.



View back, west, showing the blocked off bridleway at the junction with the Spine Road with the Cycle Track, a permissive path, running parallel to the bridleway.



View north, along the Spine Road, a service road belonging to the power station site.



At the north east corner of the power station site the path turns south toward the Didcot ring road, A4130 and continues as a narrower, circa 1m, shared use cycle path. The Public Right of Way appears to be wider, extending to the boundary fence of the old power station site but is overgrown and only the 1m wide section is maintained.

Path reference 373/25 **Designated** Public Bridleway (BR)

From Hobbyhorse Lane near its junction with Frilsham Street, S,E & S

To BR 24 at The old power station site N. boundary Fence.



- BR 373/25 the green dash line between the two red arrows on the map

Description This, 593m, BR includes Christchurch Way, now a short section of road accessing 32 Frilsham St, and continues as an unmade path linking Frilsham Street with BR 373/24 to Didcot. Its use has diminished since the opening of the Cycle Track to Didcot, a Permissive Path, which runs parallel with and close to FP 373/7/50 then BR 373/24/30.

Function This, 593m, BR links Frilsham Street with BR 373/24 to Didcot.

Comments An earlier version of the DMS identifies this as known in the past as 'Crabtree Lane'.

Paths have been removed from the DMS in the past due to lack of use. The reason for the lack of use of this BR is the better maintained parallel Permissive Path Cycle Track. However the details of the arrangements regarding the Permissive Path are unknown. It is likely there is an agreement with Sustrans but it may be time limited. The PROW should be protected to ensure it is not lost. This path is not currently suitable for cyclist so is a good alternative for walkers preferring not to encounter the cyclists on the Cycle Track.



Corner of Hobbyhorse Lane and Christchurch Way, Byway 373/9 and Bridleway 373/25, showing the finger post and road names.



After the fingerpost the Path proceeds south passes the entrance to two houses, No.s 28 and 32 Frilsham Street – the stone underfoot is firm. To the left is the site of a Catholic Church (demolished)



The Bridleway narrows at the end of the houses.



The Bridleway, now an unmade path, opens up as it enters the farmland south of Frilsham Street.



The Bridleway then narrows again and is overgrown, making it a challenge for equestrians.



View back along the Bridleway at the point where Christchurch Way turns east.



After a short section traveling east the path turns south again, toward the new (2020) distribution warehouse on Sutton Courtenay Lane.



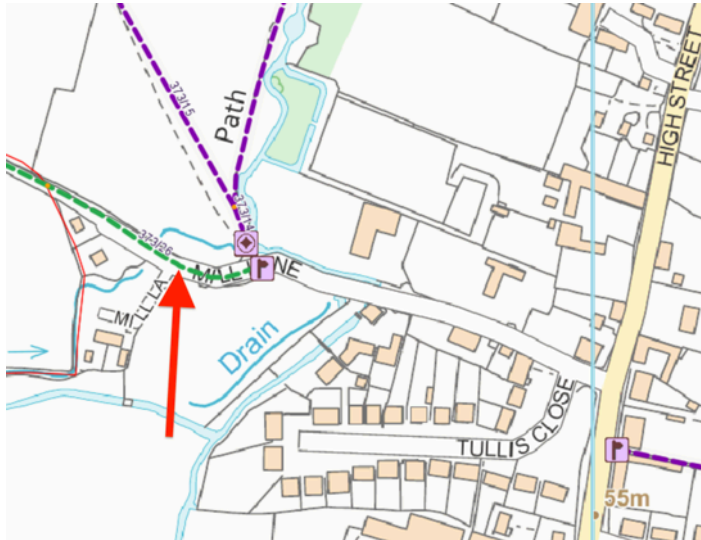
View west from near the south end of Bridleway 373/25, toward the village and houses on Harwell Road.



The Bridleway ends where it meets Bridleway 373/24 at the boundary of the new distribution warehouse (2020) formerly the Didcot A power station site.



The view back, north, along the Bridleway from where it meets Bridleway 373/24 at the boundary of the new distribution warehouse (2020) formerly the Didcot A power station site.

Path reference 373/26**Designated** Public Bridleway (BR)**From** Mill Lane, W.N.W.**To** Drayton Parish boundary (Drayton East Way)

- This short section of bridleway is at the end of Mill Lane just before it becomes Drayton East Way and Drayton BR 192/1 and is the green dash line identified by the red arrow
- The thin red line is the Drayton parish boundary

Description This, 140m, BR is named Mill Lane a tarmac road accessing the houses on Mill Lane. It leads to Drayton East Way a mostly metalled Road before joining the track, BR 192/1, in Drayton parish.

Function 140m of bridleway running from Mill Lane and FP 373/14 to the Drayton boundary where it continues as Drayton parish BR 192/1 Drayton East Way. This is the road leading to the dwellings at 5 & 6 Mill Lane both on the parish boundary.

Comments An earlier version of the DMS identifies Mill Lane as known in the past as 'Drayton East Way', which is still its name W from the Drayton parish boundary. The old wooden water mill can still be seen on the south side of the lane on the Ginge Brook. The field to the south of the BR, between the houses, has a path running across it, still clearly visible on aerial/satellite maps, which crossed the FB, now blocked, on the S side of the field before turning W to run along the S side of the Brook for link with FP 192/10, then on to Sutton Courtenay Road, Milton.



Mill Lane, Bridleway 373/26, View from the High Street looking west. Finger Post on the corner of No. 76 High Street.



Down the lane on the south, left, side is an old watermill on the Ginge Brook, which gives it's name to the lane.



Bridge over Ginge Brook on 373/26.



View of the Ginge Brook as it passes along the lane beside, 'Mill Swathe', one of the houses build on the land previously part of the farmhouse a 76 High Street and the site of a former tennis court.



Mill Lane, 373/26, with Ginge Brook running along the north side.



The Ginge Brook, after passing under the lane, continues down the north side, beside the lane to a small footbridge and stile, with a Finger Post showing the Bridleway continuing west and two footpaths, 373/14 and 373/15 to the right, north. This leads into a field popular with local children, where a rope swing can be seen over the Ginge Brook.



The concrete footbridge is over a ditch running into the Ginge Brook.



From the footbridge there are nice views along the Ginge Brook, upstream and downstream.



The lane continues west to the village boundary with Drayton Parish



There is a track across the small field to the south-side of Mill Lane. The south-side of the field has a gate to a concrete bridge, across the Ginge Brook, linking to footpath 192/10 and then south to FP 373/21 (back in Sutton Courtenay but still along the boundary with Drayton) until it reaches Sutton Road/Milton Road.



At the boundary with Drayton Parish the path continues west as Drayton East Way, Bridleway 192/1. The path follows the Sutton Courtenay boundary until it reaches Milton Road at Windy Ridge. It passes footpath 373/17 and 192/10 both part of the Vale Way an Oxfordshire Promoted Path.

Path reference	373/27	Designated	Public Footpath (FP)
From	Old Wallingford Way, BOAT 373/10. N.E. of 'Lady Place' S.		
To	Hobbyhorse Lane, BOAT 373/9.		



- FP 373/27 is indicated by the mauve dashed line between the two red arrows on the map

Description This, 614m, path Links Old Wallingford Way, BOAT 373/10, with Hobbyhorse Lane, BOAT 373/9. The first, 334m, section (373/27/10) is a wide unmade track, running from Old Wallingford Way (Lower Wallingford Road), NE of "Ladyplace", S to FP 373/8 (Doctors Lane) behind Lady Place. From Doctors Lane the, 280m, second section of the path (373/27/20) transitions from unmade track to metalled road and includes the N/S section of Frilsham St. It ends where Frilsham Street meets BOAT 373/9 (Hobbyhorse Lane).

Function This well used path is part of the main network of paths connecting three of the paths radiating from SC on the east side of the High St. Together with 373/25 to the south and 373/10 and 373/3 to the north, it is part of the network making it possible to walk from the south end of the village to the north without being on, or crossing, a main road.

Comments The DMS identifies Old Wallingford Way as 'Lower Wallingford Rd'.

With a little investment this path could form a pleasant running circuit with 373/9 & 373/10 (Old Wallingford Way and Hobbyhorse Lane). The path could also provide a cycle path to the east side of the village High St, linking with the Didcot Cycle Track.



View from Old Wallingford Way, Byway 373/10, taken Dec 2020. The path was excavated to allow Magnox to remove a pipe in 2019. As a result of the work the path can now be muddy, made worse by the use of wood chips, which are already rotting adding to the problem.



View back toward Old Wallingford Way with waymarks for Byway (BOAT) 373/10, which is where FP 373/27 starts.



On the junction of 373/10, Old Wallingford Way, and FP 373/27 in the south east corner is the Parish Cemetery.



This view is also back toward Old Wallingford Way with the rear of Lady Place on the left and the Parish Burial Ground on the right. The right of way is circa 5m wide between the rear fence of Lady Place and the post and wire, Parish Burial Ground fence, running parallel with it.

The path tends to be narrow as the path is poorly maintained by Oxfordshire County Council (OCC). It was widened in 2019 when the pipe, belonging to Magnox, running under it was removed.



Look out for hazardous obstacles along the path such as redundant gas pipe and tree stumps. These issue have been reported to OCC but are consider low priority by OCC and are unlikely to be removed.



View north, taken from Doctor's Lane Path, 373/8, along the path, 373/27 at the junction with 373/30 NNE on the right. The path is gradually moving further away from the rear fence of Lady Place, the recorded right of way, due to undergrowth, as a result of poor maintenance by OCC.



Waymark on the crossing of FP 373/27 and Doctor's Lane Path.



View east from the point where Doctors Lane emerges from the houses and crosses FP 373/27. Path 373/30 starts here and runs NE to the SW corner of the Rec.



View south from Doctor's Lane Path, 373/8. The housing at the top of Frilsham St is visible. There is a waste bin half way along this section of path, on the field side.



View south, from this point on the footpath is metalled and has become Frilsham St utilised by home owners to access housing with cars. New infill housing being constructed, 2020.



View of new infill housing, behind 67 High Street, from FP 373/27.



View back north, from the start of the housing on Frilsham St.

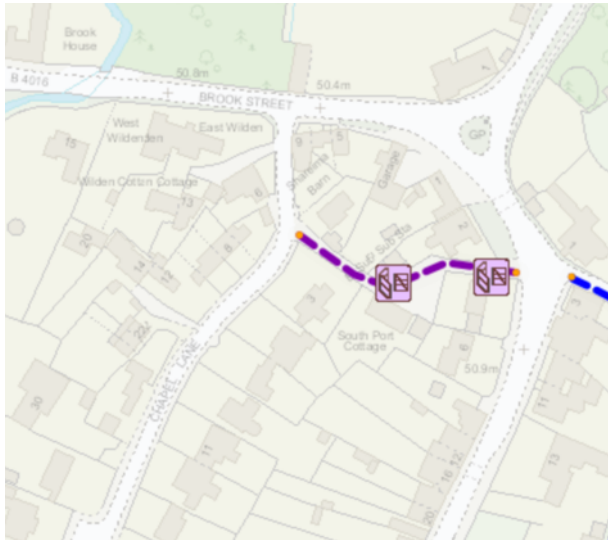


View north from the end of FP 373/27 at its junction with BOAT 373/9 on the south east corner of Frilsham St.



Finger post on the south east corner of Frilsham St.

Path reference	373/28	Designated	Public Footpath (FP)
From	High St, opp. The Croft		
To	Chapel Lane, alongside No. 3.		



- FP 373/28 is identified by the mauve dash line. Note the gates indicated have been removed.

Description This 78m long, path between the houses on Chapel Lane and High St, is clearly shown on the Definitive Map but the Definitive Statement is incomplete (No Description). The kissing gates shown on the DM are missing and the path is now providing High St access used for Car access to Southport Cottage (previously South Porch Port, Public House) behind 2 High St and 1 Brook St.

Function Chapel Lane was originally a crescent with a short close where the lane now is. The crescent ran behind the church opposite The Croft (DM 1956).

Comments The 1956 DM shows that Chapel Lane was once a crescent running between High St and Brook St. SC FP 28 was, in the past, a designation for a path between Drayton Rd and Drayton East Way, S.W. of Gilbourn's Farm, now in Drayton Parish and re-numbered 192/21.

There are two remarks in the, 2006, Definitive Statement:

- 1) Added at the 1st and Special Review of 1.11.77.
- 2) Definitive Map and Statement discrepancy - omitted from 1999 Statement.

The kissing gates have been removed.



View of path from High St opposite The Croft.



View back toward the High St from behind the houses on the High St. This access is used for Car access to Southport Cottage (previously Southport Arms Public House). The name is a reference to the South Porch of the chapel that stood in-front of the pub.

The Definitive Map shows two gates on the path, both have long since disappeared.



View of South Port formally South Porch Inn, now a house.



View from South Port on 373/28 toward Chapel Lane.

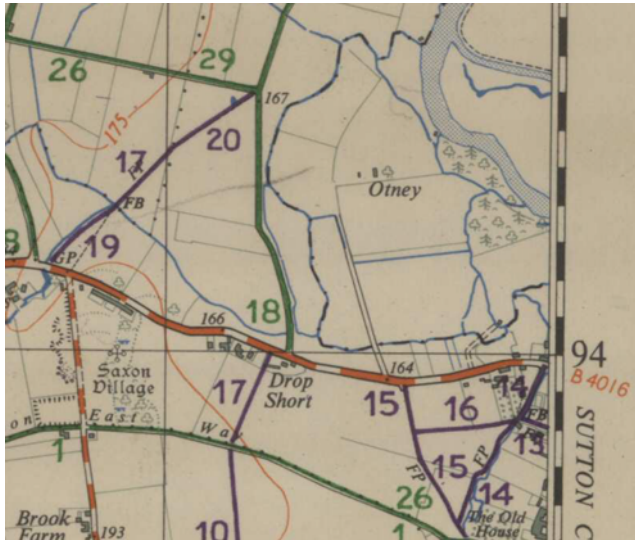


View, east, of the Chapel Lane end of the path.



The only remaining signage is on the wall of No. 3 Chapel Lane.

Path reference 373/29 **Designated** Extinguished
From Formerly from, BR 373/18 (Peep-o-day Lane) at junction with FP 20 W
To Drayton Parish boundary



- The location of the extinguished BR 29 is clearly visible on this excerpt of the 1956 SU49 Definitive Map. The path was reinstated as BR 373/22, see report 22.

Description Removed from DMS - replaced by 373/22. See record 22 for 373/22.

Function See record 22 for 373/22.

Comments The picture shows the 1956 Definitive Map

Path reference 373/30 **Designated** Public Footpath (FP)

From Doctors Lane, FP 8 at junction with FP 27 leading generally NNE

To the SW corner of the recreation ground.



- FP 373/30 the mauve dashed line indicated by the red arrow.

Description A, 172m, unmade path through scrub and trees, behind Lady Place, NE to the SW corner of the Recreation ground, where it connects with two unregistered paths and the access gate in the SW corner of the Rec.

Function Access from Doctors Lane (south end of the High St) to the Rec.

Comments Apart from access to the Rec, this path, 373/30, connects to two unregistered paths at the NE end. 1) Is shown as a dashed grey line on the OS, in the field to the south of the Recreation Ground running ESE to the NE corner of the field where it meets FP373/7 at the stile on the N boundary. 2) The south side of the Rec has been fenced off and tree lined to create a path for dog walkers (when dogs were banned from the Rec) but this path remains unrecorded except here where it is included as record 35 (Dog path south side of Rec).



View east from the point where Doctors Lane emerges from the houses and crosses FP 373/27. Path 373/30 starts here and runs NE to the SW corner of the Rec.



View north, taken from Doctor's Lane Path, 373/8, along the path, 373/27 at the junction with 373/30 NNE on the right. The path is gradually moving further away from the rear fence of Lady Place, the recorded right of way, due to undergrowth, as a result of poor maintenance by OCC.

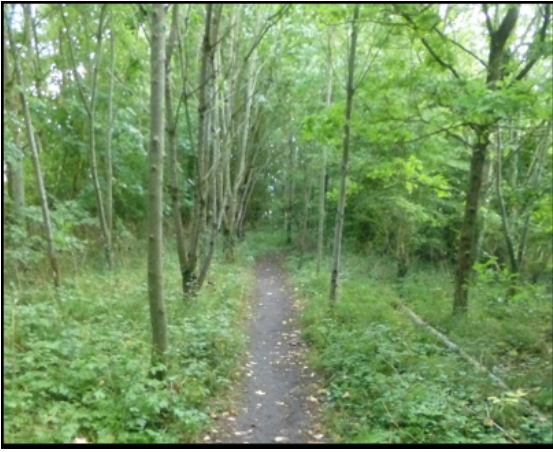


Path crosses open ground north east towards the copse running along the east side of the field.

Grass is cut at least twice per year.



Self closing gate on the east side of the field leading into the copse.



The path goes through the copse towards Recreation Ground. This section can be very muddy in winter. As a result of the poor condition of the path in winter most people continue to the north east corner of the open field where there is a gap in the fence.



The path ends and the south west corner of the Recreation Ground. The near gate is the end of the path. The further Gate is the entrance to the dog walk running along the south side of the recreation ground.



View back through the gate, into the copse, from the Recreation Ground. This section can be very muddy in winter.



A few meters west of the official path is a gap in the fence leading directly into the grassed area of the field avoiding traversing the muddy section through the copse.

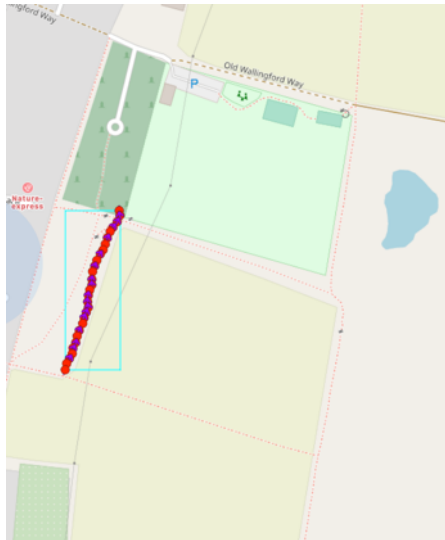


View of the gap in the fence at the north east corner of the field.

Path reference FP 30 alternate route through copse **Designated** Unregistered path

From Doctors Lane, FP 8 NNE, through a copse N of Doctors Lane,

To the SW corner of the recreation ground where it joins FP 373/30 and the unrecorded path to the south of the Rec.

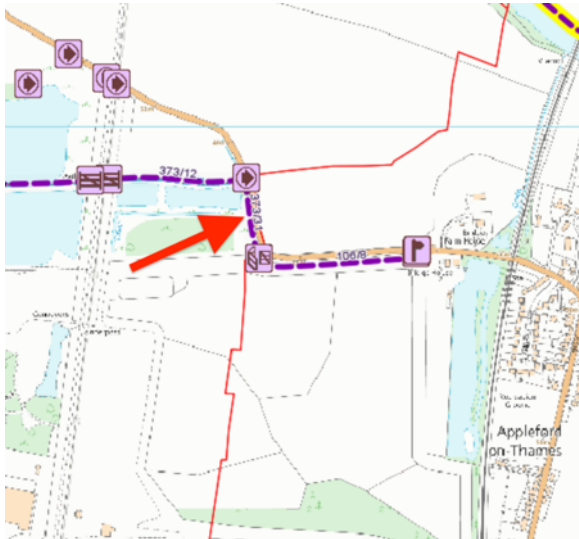


- FP 373/30.1 This is an alternate path to 373/30 indicated by the mauve/red dotted line.

Description A 164m, unmade path, through the copse behind Lady Place, NNE. FP 373/30 joins it via a gate on the left from where it continues to the SW corner of the Recreation ground.

Function Access from Doctors Lane (south end of the High St) to the Rec.

Comments This appears to be an unrecorded path from Doctors Lane Path, FP 373/8, from the SE corner of the copse north to the SW corner of the Rec.

Path reference 373/31**Designated** Public Footpath (FP)**From** From the E end of FP 373/12, S**To** Appleford FP 106/8 at the parish boundary (Appleford Church path) and (The Kingdom of Wessex trail).

- FP 373/31 the mauve N/S dashed line indicated by the red arrow.
- Note the gate at the south end has been removed.

Description This path runs parallel to the B4016, Appleford Rd and the parish boundary with Appleford is the E side of this section of the B4016. Recorded as 2m reducing to 1.5m but the path is overgrown and poorly maintained. Partly due to the poor state of the diverted FP 373/12. Signage for the path is barely visible.

Function This path links SC FP 373/12 with Appleford FP 106/8 avoiding having to walk on the Appleford Rd (B4016). The shortest walking route to Appleford BR Stn and it is part of the 'The Kingdom of Wessex trail'.

Comments The path extends 373/12, Churchmere Road, S along side the B4016, to the Appleford parish boundary, FP 106/8 then E to Bridge House. This is the shortest walking route from SC to Appleford BR Stn and it is part of the 'The Kingdom of Wessex trail'.

The path was added to the Changes register (21 February 2019) 6 April 2009. The width is recorded as 2m between SU 5196 9389 and SU 5199 9373; reducing to 1.5m between SU 5199 9373 and the parish boundary. Added by Dedication Deed 4.11.2008. The path is overgrown and poorly maintained. Partly due to the poor state of the diverted FP 373/12. Signage for the path is barely visible and walkers and runners tend to use the Appleford Road, B4016, which is dangerous.



View north on 373/31. Most of summer 2020 this path was impassable other than by determined hikers with sturdy boots and thornproof trousers.



Waymark at the end of the 373/12 diversion (note the statutory notice) where the designated Right of Way meets the Appleford Rd, B4016, at the north end of FP 373/31



Waymark where path, 373/31, follows the B4016, Appleford Rd towards Appleford



View from the end of 373/12 where the designated Right of Way meets the north end of 373/31 and Appleford Rd, B4016. A large diameter black pipe crosses the path and is a tripping hazard.



View north on 373/31. Most of summer 2020 this path was impassable other than by determined hikers with sturdy boots and thornproof trousers.



View north on 373/31 from the B4016. There is a post and barbed wire fence between the path and the road, which has fallen into disrepair and is now a hazard to path users.



Broken kissing gate amongst the nettles at the south end of 373/31. The broken gate and some other discarded debris was removed Autumn 2020, after numerous requests to OCC and the landowner.

The west end of Appleford's FP 106/8 can be seen in the background.

Path reference 373/32**Designated** Public Footpath (FP)**From** Drayton FP 192/17 at the Drayton parish boundary, leading generally NE and NNE**To** Sutton Courtenay BR 373/22 near it's junction with Peep-o-day Lane, BR 373/18.

- FP 373/32 is indicated by the mauve dashed line between the two red arrows on the map

Description Gilbourn's Path (North). The path is across a poorly reinstated (as farmland) landfill site, with rebar sticking out and fill materials clearly visible, it is still, nevertheless, a nice walk to a small lake in Drayton Parish. The path around the lake is Drayton FP 192/17, which links back to SC FP 373/19.

Function This path links Peep-o-day Lane to a small lake that is just over the Drayton Boundary then on to Drayton Road opposite Gilbourn's Farm to the west of the junction with Milton High St, via Drayton FP 192/17 and SC FP 373/19.

The right of the owner to erect and maintain a 2.6m mobility gate at SU 4923 9469 (Junction with Gipsy Lane and Peep-o-day Lanes) was confirmed in recorded Changes, 9 July 2013.

Comments The path was added to the Changes register 9 July 2013.
The width is recorded as: 6m
Remarks: Added by Diversion Order confirmed 09.07.2013.

The 1804 Enclosure Map and an earlier version of the DMS identifies this as 'Gilbourne Path', FP 20. The 1804 Enclosure Map and this earlier DMS also refers to it's junction, at the NE end, with 'The O'Day Road' and 'Oday Rd' respectively (now Peep-o-day Lane, BR 373/18) and Oday Hill, FP 373/22 (formally SUT BR 29).



The path starts at the parish boundary at the end of Drayton's FP 192/17, an excellent spot for bird watcher, where there are good views across the lake. The Lake is in Drayton CP.



View N/W across the lake on Drayton FP 192/17.



View W across the lake on Drayton FP 192/17.



The path is a reclaimed landfill site and there are some signs of debris including reinforcement bars and concrete. The rebar has been fitted with a red cap to reduce the risk and make it more visible but should be removed.



Kissing gate at NE end with PROW sign for Bridleways 373/22 and 373/18, Oday Hill and Peep-o-day Lane.



View along path SSE over kissing gate.



View SE from Oday Hill, 373/22, showing the kissing gate to FP 373/32 and continuation of Bridleway 373/18, Peep-o-day Lane, to the left. Fencing remaining from the resurfacing work to 373/18, July 2020.

Path reference All Saints Lane to Churchmere via the common **Designated** Other

From FP 373/3 (All Saints Lane) E to NW corner of The Millennium Common, then SSW along the western boundary of The Millennium Common

To FP 373/12, Churchmere Road



- Path 33, the subject of an extant DMMO (2003 - 2021) is indicated by the red line on the map

Description The red line on the above map shows a, c450m, path, currently closed to the public, between All Saints Lane and Churchmere Road but if opened would link the two via The Millennium Common.

Function If opened it would link All Saints Lane to Churchmere Road via the Millennium Common, with views across the three lakes to the south of Appleford Road.

Comments This closed path is subject to an extant DMMO application, No. 01886, made 22 May 2003. The case officer is Lisa Gray, Technical Officer Countryside Records Email: lisa.gray@oxfordshire.gov.uk Tel: 01865 328946 <https://consultations.oxfordshire.gov.uk/consult.ti/01886.Informal/consultationHome>

The N/S section through the Millennium Common is through a wooded area to the east of fenced private land. The landowner has carried out extensive planting along this fence. As a result it will not be possible to see the middle lake, which is a pity as this is a wild bird haven.



View of the path from All Saint's Lane, Bridleway 373/3, past the gate closing off access to the path since 2002.



The path along the western edge of the Millennium Common can be very nice when not too muddy. The path used to drain to the lake to the east, behind the high wire fence, but the owner has constructed a bund, which results in the path being boggy for much of the year.



Finger post where path 373/12 narrows at the south west corner of the Millennium Common and near an unregistered path south to Old Wallingford Way, 373/10.



View north over the south west entrance to the Millennium Common via a galvanised kissing gate. This path is the subject of an application to have it recognised as a public path but it is currently claimed as a Permissive Path by the landowner FCC Environment. There should be a map of the paths across the common to left of gate but it is damaged. The lake to the left belongs to one of the houses on All Saint's Lane and unfortunately the owner has built a bund along the fence resulting in the path being boggy in winter as the surface water can no longer drain to the lake and the view is gradually diminishing as the recently planted shrubs mature.



Path Narrows, restricted by a steel barrier and concrete blocks, near the south west corner of the Millennium Common. This was done many years ago, to prevent vehicles passing, by WRG or Hanson, to stop joy riders, who were creating havoc.

Path reference Millennium Common paths **Designated** Permissive Path

From Various paths across the Millennium Common

To All access and egress (4 along S boundary) is via Churchmere Road, FP 373/12



- The faint red lines across the Millennium Common, shown, are promoted paths. Some are mowed making them easier to follow.
- Maps at the gates to the common show the promoted paths.
- Note the report for path 33, which is the subject of an extant DMMO application for the recognition of a path along the western edge of the common.

Description Permissive unmade paths with restricted access for walking.

Function General unmade paths around the common for peaceful enjoyment of the flora and fauna. Not open to vehicles of any kind other than those needed to maintain the common.

Comments Synopsis of information provided by David Hignell, Chairman, Millennium Common Management Committee. The Millennium Common was set up, or established, 30 March 1999, with a sum of money paid to OCC by Hanson. The use of the land as Millennium Common is set to last for 80 years from inception and will cease/expire in 2079 under the provisions contained within the original planning permission and Section 106 Agreement.

There is an extant DMMO application (2003) for formalisation of a PROW from All Saints Lane E and then S, down the W boundary of the common. Any paths not formally recognised as PROW are likely to be lost when the land reverts to the landowner, 2079. The land may also be the subject of further development at this time.



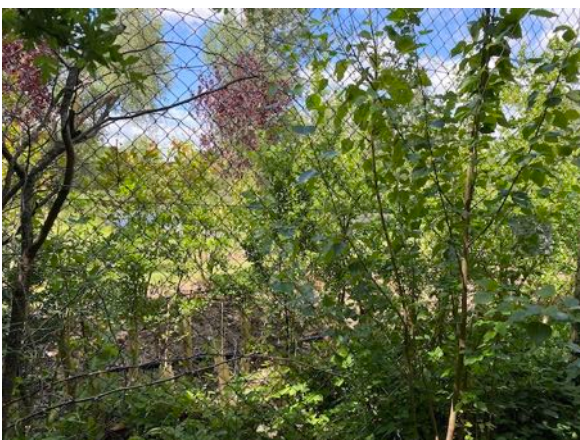
Finger post where path 373/12 narrows at the south west corner of the Millennium Common and near an unregistered path south to Old Wallingford Way, 373/10.



View north over the south west entrance to the Millennium Common via a galvanised kissing gate. This path is the subject of an application to have it recognised as a public path but it is currently claimed as a Permissive Path by the landowner FCC Environment. There should be a map of the paths across the common to left of gate but it is damaged. The lake to the left belongs to one of the houses on All Saint's Lane and unfortunately the owner has built a bund along the fence resulting in the path being boggy in winter as the surface water can no longer drain to the lake and the view is gradually diminishing as the recently planted shrubs mature.



View, north, of the path along the western edge of the Millennium Common. Claimed as a Permissive Path by FCC Environment since about 1999 but also the subject of an application for recognition as a public right or way (extant DMMO submitted 2003).



View through the fence, on the western edge of the Millennium Common, where the lake can still be seen although its now obscured by a bund with extensive planting and irrigation pipework. The bund is the cause of the path becoming boggy in winter or after rain, as the runoff water can no longer drain into the lake.



The access points at the other three gates, two kissing gates and a farm gate, have the information boards intact. The sign board shows some suggested paths and says, "The Appleford and Sutton Courtenay Millennium Common was formally handed to the villages on 15 September, 2001. However, the legal records show that the common is only on loan until 2079 when it will revert to private land owned currently by FCC Environment."



2nd gated entrance to the Millennium Common from FP 373/12.



3rd gated entrance to the Millennium Common from FP 373/12.



The gateway on the left is the south east entrance to the Millennium Common – Eastern end

Route crosses Hanson Access Road – Care when crossing heavy lorries use the road

The Definitive Map shows the path continuing straight on, eastwards, until it reaches the Appleford Rd, B4016, but it is currently diverted around the north side of the quarry



View north from the south east corner of the Millennium Common. The stream on the right links the lake in Horseshoe field back to the water courses and then on to the River Thames.



View from inside the 4th gated entrance to the Millennium Common at its south east corner, across FP 373/12 south along the Permissive Path down the east side of Horseshoe Field toward the lake, with the two chimneys of Didcot B power station just visible on the horizon at the southern end of the parish.

Path reference Dog path south side of Rec **Designated** Unregistered path

From FP 373/27, SE Cnr of the cemetery along the S side of the Rec.

To FP 373/7, SE corner of the Recreation Ground.



- The red dotted line indicates the route of the dog walkers path along the south side of the Recreation Ground

Description A well used, 244m, unmade path through trees on the south side of the Rec.

Function Original part of the Rec the path starts from FP 373/30 and was created to enable dog walkers access along the Southside of the Recreation Ground, as dogs are not permitted on the Recreation Ground.

Comments Not formally recognised. There is also a path, shown but not registered on the DM and shown on OS maps, parallel to this path, c10m S, on the north side of the field immediately to the south of the Rec. There is also a stile, to access this parallel path, at its E end.



View north east, from FP 373/30, of the gate at the south west corner of the Recreation Ground, accessing the separated path for dog walkers.



The path for dog walkers east from FP 373/30 can get very muddy in the winter. The Recreation Ground is visible in the background.



South west gate to the Rec from the dog walkers path.



The dog walkers path runs along the south side of the Rec.



The dog walkers path is on the south side of the Recreation Ground from FP 373/30 to FP 373/7.



View south east from the dog walkers path. Note the flooded field and chimneys of Didcot Power Station at the southern end of the parish.



View south east from the dog walkers path. Note the flooded field and chimneys of Didcot Power Station at the southern end of the parish.



View across the Recreation Ground. Note floodlit area, Sutton Courtenay FC Club House and the carpark on Old Wallingford Way.



Seat on dog walkers path overlooking the Recreation Ground. Note the field is flooded in the south east corner.



Gate at the south east corner of the Recreation Ground.



View north west, across the Recreation Ground. Flooded Jan and Feb 2021.



The eastern end of the dog walkers path, just past the gate at the south east corner of the Recreation Ground, is the gate to FP 373/7.



View from FP 373/7, south west, of the eastern, kissing, gate to the dog walkers path, south side of the Recreation Ground. The path to the stile, left of picture, is the designated route shown on the Definitive Map for FP 373/7. This Public Right of Way, crosses the eastern edge of the field, with views of the Village Hall and Hobbyhorse Lane, to the east end of Doctor's Lane Path, 373/8 and a gate in the hedgerow. However, the used path has been moved to the other side, east, of the hedgerow. Crossing the stile to the right, west, there is a path shown on OS maps along the northern edge of the field.

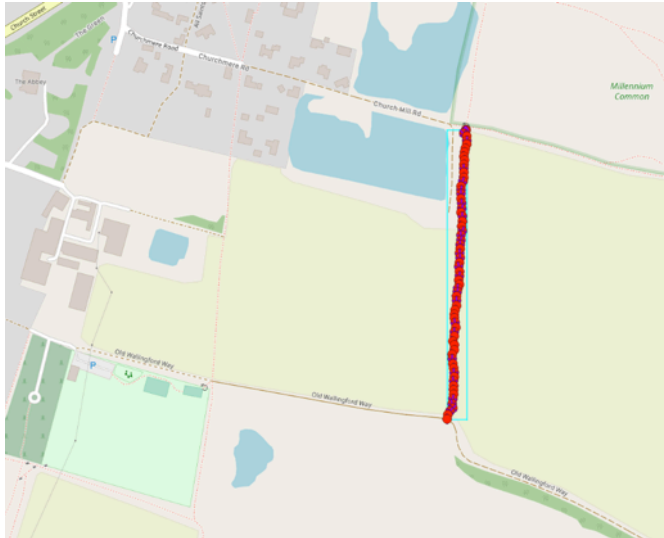


View south west from FP 373/7 junction with the dog walkers path, near the south east corner of the Recreation Ground. Note the Village Hall at the far side of the flooded field (Feb 2021).

Path reference Horseshoe Field west side **Designated** Unregistered path

From SW Cnr of the Millennium Common 373/12 Churchmere Road, S,

To Old Wallingford Way 373/10



- The red/mauve line indicates the route of the path

Description This, 385m, unmade path, clearly visible on public satellite maps, runs south from the SW gate of the Millennium Common on Churchmere Road, 373/12, along the east boundary of Churchmere pool (private fishing lake) and continues S until it meets Old Wallingford Way, 373/10.

Function This well used unmade path completes the circuit around the field directly to the south of the Millennium Common. It also creates a circular route for walkers from the village connecting 373/10 and 373/12.

Comments This is a very well used and popular path connecting Old Wallingford Way to the Millennium Common at the SW corner. Providing easy, more direct access to the common for people from the south of the village.



Finger post where path 373/12 narrows at the south west corner of the Millennium Common and near an unregistered path south to Old Wallingford Way, 373/10.



View south from 373/12, Churchmere Road. Taken from close to the south west gate to the Millennium Common. This is an unrecorded path down the west side of FCC Environment's Horseshoe Field toward BOAT 373/10 Old Wallingford Way. Note the chimneys belonging to Didcot B power station at the southern end of the parish. The path is boggy in winter due to the raised level of the landfill to the south and east.



View north from the unregistered and unmade path, on the west side of Horseshoe Field, near the point where it meets FP 373/12, Churchmere Road and the kissing gate at the south west corner of the Millennium Common.



View west from the unregistered and unmade path, on the west side of Horseshoe Field, across Churchmere Pool (a private fishing lake).



View south from near the south east corner of Churchmere Pool. Note the chimneys of Didcot B power station at the southern end of the parish.



View south west from the unregistered and unmade path, on the west side of Horseshoe Field. The Village Hall on Hobbyhorse Lane is just visible below Milton Heights, the hills on the skyline. The path on the far side of the field is Old Wallingford Way, BOAT 373/10.



View west from the unregistered and unmade path, on the west side of Horseshoe Field. The buildings belonging to Cross Trees Farm are in the background with the fence delineating FP 373/7 crossing the far side of the field to the Rec at the left, south.



View south from the south end of the unregistered and unmade path, on the west side of Horseshoe Field. The two paths straight ahead are Old Wallingford Way, 373/10, on the right and the alternative path on the left now being used due to the poor maintenance and state of the official path. A remaining chimney belonging to Didcot power station is visible on the skyline at the southern end of the parish.



View west, from the south end of the unregistered and unmade path, of Old Wallingford Way, 373/10, leading back toward Cross Trees Farm and the Recreation Ground.



The path to the north is not an adopted path but merely a field edge leading to 373/12 at the western entrance to the Millennium Common but popular with dog walkers.

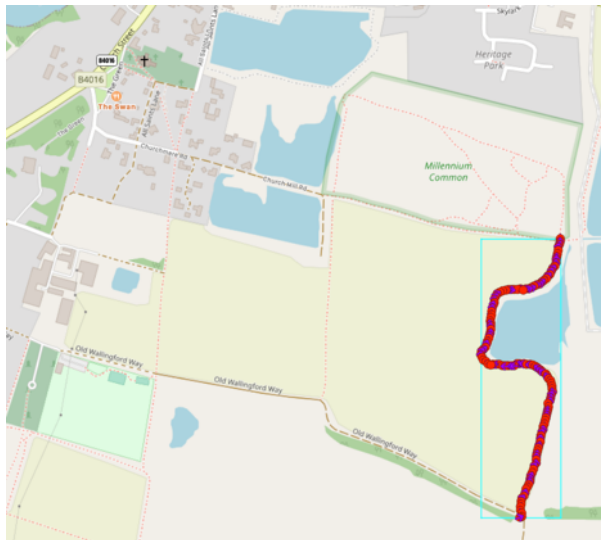


View west along BOAT 373/10, Old Wallingford Way, from the south west corner of Horseshoe Field. This is the end of the concrete section. The path joining from the right is an unmade unregistered path along the west side of Horseshoe Field.

Path reference Horseshoe Field east side **Designated** Permissive Path

From 373/10 at SU 5119 9336 NNE along the east side of the field close to the fence and ditch to the balance pond/lake, around the fenced perimeter of the lake and continuing on the east side of the field

To 373/12, Churchmere Road opposite the east gate to the Millennium Common.



- The red/mauve line indicates the route of the path

Description This is a, 723m, unmade path, marked in red, from 373/10 (Old Wallingford Road) across the east side of the field close to the fence and ditch to the balance pond/lake, around the fenced perimeter of the lake and continuing on the east side of the field to 373/12 (Churchmere Road) at the SE Cnr of the Millennium Common.

Function This connection between 373/10 and 373/12 creates a good circular walking path to the east of the village, incorporating 373/7, 373/9, 373/10 and 373/12 with flexibility to include the High St and many of the other N/S paths on the east of the village. It can also form part of a larger path around the outskirts of the village.

Comments Very popular walking route connecting both Old Wallingford Way, 373/10 and via it, Hobbyhorse Lane, 373/9, to 373/12 Churchmere Rd and the Millennium Common at the SE corner.



From Byway 373/10 there is a Permissive Path, part of the minerals and waste planning consent since 2007, going north around the east side of the field (Horseshoe Field) to the south east corner of the Millennium Common. Very popular with walkers as it creates a circular route on the east side of Sutton Courtenay.



From Byway 373/10 the Permissive Path, going north around the east side of Horseshoe Field to the south east corner of the Millennium Common can get very boggy in winter but is still very popular with walkers.



View west along Byway 373/10 (Pole and wire fence) the track running parallel to the BOAT used when the BOAT is to boggy but can itself become boggy. The view is from the Permissive Path, going north around the east side of Horseshoe Field, toward the south east corner of the Millennium Common.



View south along Byway 373/10 where it turns south and crosses the culvert over the ditch. The view is from the south end of the Permissive Path, going north around the east side of Horseshoe Field.



View along the Permissive Path going north around the east side of Horseshoe Field to the south east corner of the Millennium Common, can get very boggy in winter but is still very popular with walkers.



View south along the Permissive Path around the east side of Horseshoe Field. Note the chimney belonging to Didcot power station on the horizon at the southern end of the parish.



View north. The Permissive Path follows the fence around the small lake, or balancing/silt pond, belonging to Hanson and part of the water management system connected to the mineral extraction facility to the east.



View east, of the aggregate washing and grading plant belonging to Hanson.



The area around the small lake is strangely tranquil given it is part of a large industrial complex.



The Permissive Path turns west with views toward Sutton Courtenay. The lake is on the right.



Although private and off limits the lake is very popular for fishing. Numerous breaches of the security fence.



View east across the lake to the minerals processing plant.



View south around the west side of the lake. Note the chimneys of Didcot B power station on the horizon at the southern end of the parish.



View north from the lake toward the south east corner of the Millennium Common.



View north from the south east corner of the Millennium Common. The stream on the right links the lake in Horseshoe field back to the water courses and then on to the River Thames.



View west along 373/12 from just before the 4th, south east, gate to the Millennium Common. The start of the Permissive Path, belonging to FCC Environment, runs down the east side of Horseshoe Field to the lake and then on to 373/10, Old Wallingford Way.



View from inside the 4th gated entrance to the Millennium Common at its south east corner, across FP 373/12 south along the Permissive Path down the east side of Horseshoe Field toward the lake, with the two chimneys of Didcot B power station just visible on the horizon at the southern end of the parish.



View east across the north end of the Permissive Path around the east side of Horseshoe Field from FP 373/12, Churchmere Road. The stream from the lake passes under FP 373/12 just beyond the gate to the Millennium Common, on the left.



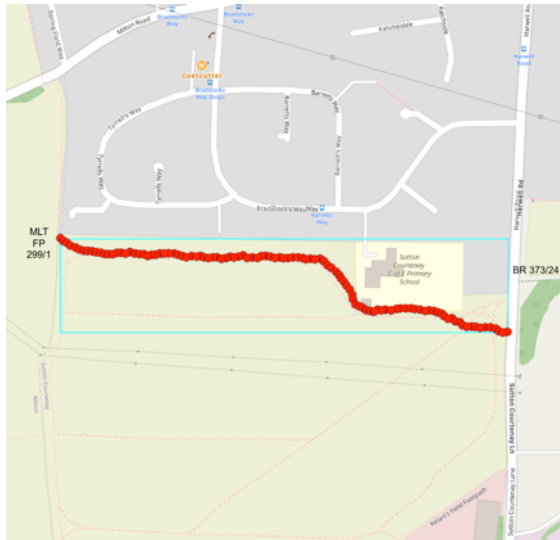
Near the south east corner of the Millennium Common the stream from the balancing settlement pond, in Horseshoe Field, passes under FP 373/12. The stream runs along the east boundary of the Millennium Common.

Path reference Kelaart's Field north side
W-E

Designated Unregistered path

From Kelaart's Field - North boundary going east from Milton FP 299/1, SU 4939 9258 E to SU 4970 9257 then SE to SU 4976 9250 then E

To SU 4997 9249 Sutton Courtenay Lane/Harwell Road.



- The red line indicates the route of the path

Description An unmade path close to the north boundary of Kelaart's Field. Clearly visible on public satellite maps.

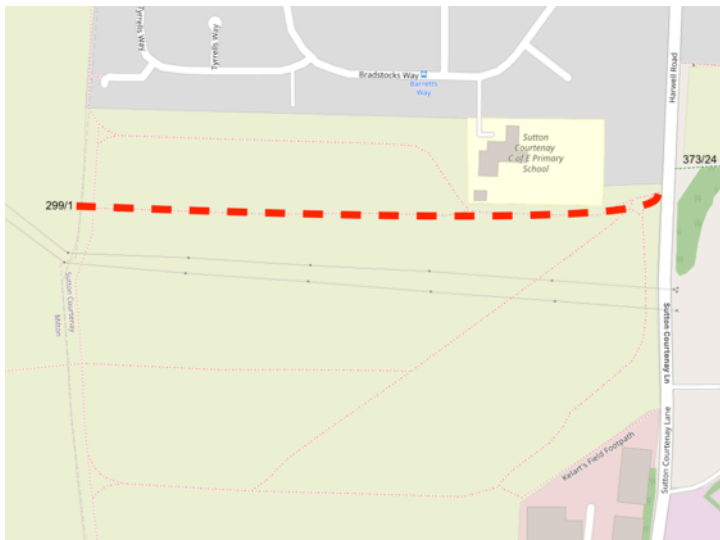
Function Regularly used by walkers (with and without dogs) connecting Milton's FP 299/1 with Sutton Courtenay Lane and Harwell Road. Also used by walkers making a circuit around the field, evidenced by the rounding of the corners visible on the ground and on publicly available satellite maps.

Comments Kelaart's Field is criss-crossed with paths, some are marked as Permissive Paths some are historical but unregistered paths. The majority of the properties on Tyrell's Way and Bradstock's Way, adjoining Kelaart's Field, have access gates directly into the field from their properties and some have well maintained link paths.

Path reference Kelaart's Field north side E-W **Designated** Other

From Kelaart's Field - W from Sutton Courtenay Lane/Harwell Road, SU 4997 9249, north side of the field, inline with south boundary of the primary school

To Milton Parish boundary, FP 299/1, SU 4938 9250



- The red dash line indicates the route of the path

Description An unmade path close to the north boundary of Kelaart's Field but generally E/W in line with south boundary of the school. Clearly visible on public satellite maps.

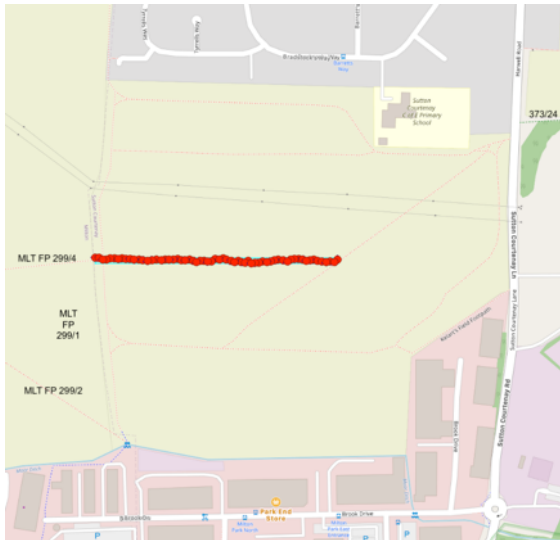
Function Path regularly used by walkers (with and without dogs) most likely making a circuit around the field when starting from Harwell Rd/Sutton Courtenay Lane and to link to Milton FP 299/1.

Comments Kelaart's Field is criss-crossed with paths, some are marked as Permissive Paths some are historical but unregistered paths. It is likely that this path came into existence as a result of the construction of Sutton Courtenay Primary School.

Path reference Kelaart's Field centre continuation of MLT FP 4 **Designated** Unregistered path

From Kelaart's Field - Milton FP 299/4, SU 4937 9233 E

To SU 4971 9233, in Kelaart's Field.



- The red line indicates the route of the path

Description Unmade, 359m, path E in line with the E end of Milton FP 299/04. Clearly visible on public satellite maps.

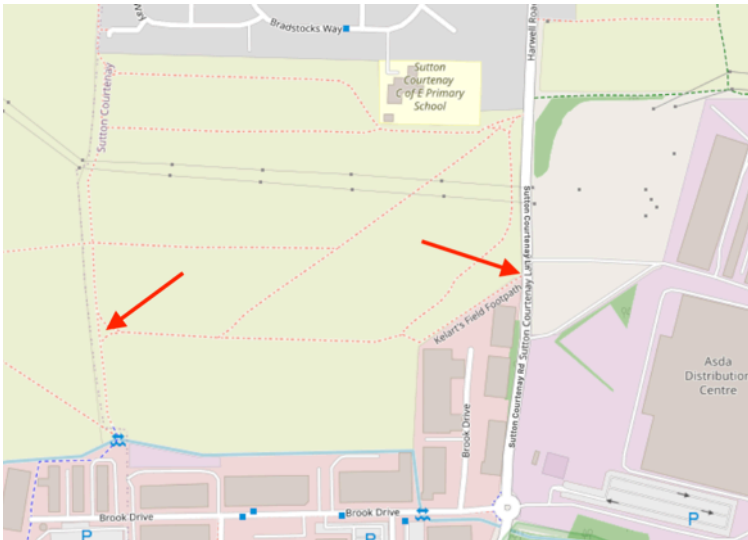
Function Connects Milton FP 299/4 from Milton village with Sutton Courtenay (Sutton Courtenay Lane and Harwell Road). Regularly used by walkers (with and without dogs) on route to or from Milton.

Comments Kelaart's Field is criss-crossed with paths, some are marked as Permissive Paths some are historical but unregistered paths.

Path reference New Kelaart's Field south side **Designated** Permissive Path

From Sutton Courtenay Lane, SU 4996 9231, SW to SU 4982 9220, then W

To MP FP 299/1, SU 4939 9219, SW corner of Kelaart's Field.



- The path follows the faint red line between the two red arrows

Description An unmade path connecting Sutton Courtenay Lane to Milton Park via Milton FP 299/1 along a relatively new fence across the south of Kelaart's Field. There is a Permissive path sign but there are two other paths running parallel with this path, one to the south of the new fence and one slightly, circa 10m, to the north (most likely the tractor path). The two north of the fence are clearly visible on public satellite maps. The one to the south of the fence is delineated by a groves of trees and is identified on Milton Park estate maps as a 'Walking Path'.

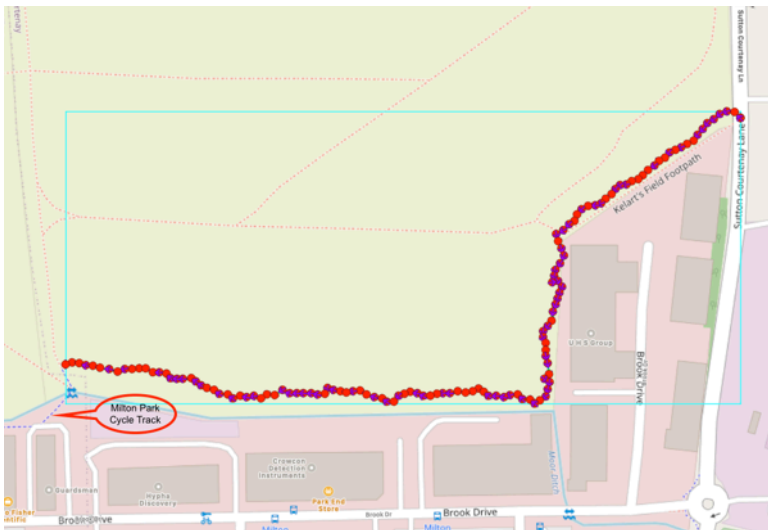
Function Claimed as a 'Permissive path'. Connects Sutton Courtenay Lane to a 'Permissive Path' in SC parish near Milton parish boundary and parallel with Milton FP 299/1. The path from Sutton Courtenay Lane, the most southerly point where the field can be accessed from Sutton Courtenay Lane, is regularly used by walkers on route to or from Milton Park and is now part of the circuit around Kelaart's Field. Note this path used to be further south along Moor Ditch and the North boundary of the existing developed part of Milton Park.

Comments Kelaart's Field is criss-crossed with paths, some are marked as Permissive Paths some are historical but unregistered paths.

Path reference Original Kelaart's Field south side **Designated** Unregistered path

From Sutton Courtenay Lane, SW then S to Moor Ditch, then W along Moor Ditch

To Milton parish boundary, FP 299/1, originally to Maynes Bridge on Moor Furlong Ditch in Milton parish but now to a 'Permissive Path' on the W boundary of Kelaart's Field (also the Milton SC parish boundary)



- The red/mauve line indicates the route of the path

Description This, 774m, path is the remaining path around the southern boundary of Kelaart's Field connecting Sutton Courtenay Lane with the footbridge over Moor Ditch at the Milton parish boundary, where it originally met Milton FP 299/1. The path has wood bark/ chippings on it and is protected by hedgerow between it and the farmed field. The path follows the fenced boundary of Milton Park industrial area or science park to the east and south.

Function The original route around Kelaart's field along the south boundary and along Moor Ditch. Dates back to before the Second World War when the buildings to the south of the path, now part of Milton Park, were MOD.

Comments Kelaart's Field is criss-crossed with paths, some are marked as Permissive Paths some are historical but unregistered paths. The 1956 Definitive Map - SU49, shows a path from the south of the village, now Harwell Rd to Moor Ditch. This path from Sutton Courtenay Lane follows the south boundary of Kelaart's Field along Moor Ditch to the parish boundary where it meets Milton parish FP 299/1 and crosses Moor Ditch. The path is clearly visible on the Google Satellite Map.

Path reference Kelaart's Field NE-SW **Designated** Unregistered path

From Harwell Rd, Kelaart's Field - NE corner SW

To Moor Furlong Ditch, Kelaart's Field - SW corner, originally to Maynes Bridge on Moor Furlong Ditch in Milton parish.



- The red line indicates the route of the path
- The red dash line was the route before the fence blocking it was erected by the landowner

Description This, 722m, unmade path starts at the NE corner of Kelaart's Field and crosses the field diagonal SW to Moor Furlong Ditch, W of Kelaart's Field - SW corner, originally to Maynes Bridge on Moor Furlong Ditch in Milton parish where it meets Milton FP 299/1 before crossing the bridge just to the east of a ditch joining Moor Furlong Ditch from the S, SU 4931 9205.

A fence has been erected across the southern part of Kelaart's Field, SU 4940 9218 and SU 4982 9219, cutting off part of the path. Since the erection of the fence the path now turns W along the fence until it joins the 'Permissive Path' on the W side of Kelaart's field, S along the Permissive Path' which runs parallel to Milton FP 299/1 but just inside SC parish.

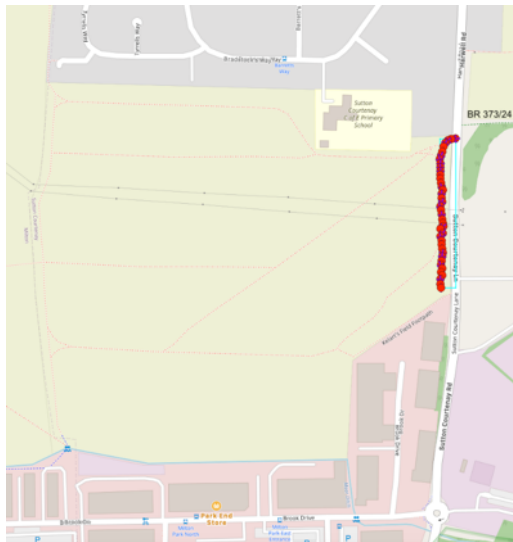
Function Links the south end of SC with Milton Park, via the bridge over Moor Ditch and with Milton Village, via Milton FP 299/1. The path is very well used by people in SC working in Milton Park and or using the amenities there, such as the pharmacy, which is the nearest pharmacy to SC.

Comments Kelaart's Field is criss-crossed with paths, some are marked as Permissive Paths some are historical but unregistered paths. The existing route and original path are clearly visible on Google Satellite Maps.

Path reference Kelaart's Field east side **Designated** Permissive Path

From Harwell Rd, NW corner of Kelaart's Field S along the east side of Kelaart's field parallel with Sutton Courtenay Lane,

To Sutton Courtenay Lane where there is a kissing gate and another path continuing SW then S around the boundary of Kelaart's Field.



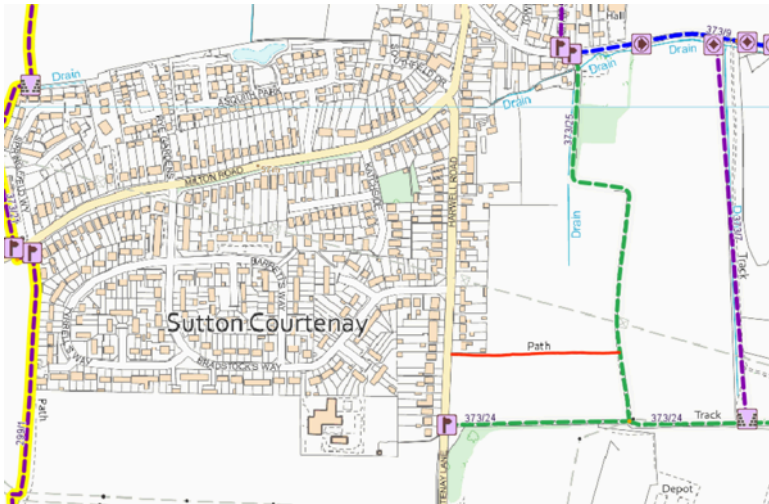
- The red/mauve line indicates the route of the path

Description An unmade path down the east side of Kelaart's Field.

Function Marked as a 'Permissive path' regularly used by walkers (with and without dogs) most likely making a circuit around the field or travelling to and from Milton Park around the edge of the field.

Comments Kelaart's Field is criss-crossed with paths, some are marked as Permissive Paths some are historical but unregistered paths. This path appears, from older maps of the area, to predate Sutton Courtenay Lane.

Path reference	Harwell Rd east	Designated	OS path or track
From	Harwell Rd south of No. 43, east across open fields		
To	Bridleway 373/25		



- The red line indicates the route of the path

Description A c250m unmade path across the open fields to the east of Harwell Road just south of the last house on Harwell Road east side, No. 43.

Function Mostly used by dog walkers to access the paths on the east side of SC.

Comments This unmade path is well used by dog walkers and has a bench seat and waste bin at the Harwell Road end, making it convenient to dog walkers returning to the village.



View of the path, marked on OS maps, from Harwell Road east to Bridleway 373/25.



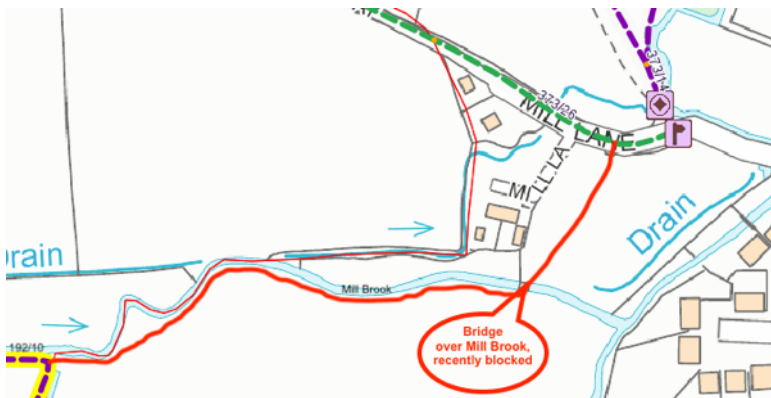
View west from near the south end of Bridleway 373/25, toward the village and houses on Harwell Road.

Path reference Mill Lane - Milton via FP 373/21 **Designated** Unregistered path

From Mill Lane, 373/26, at SU 4977 9350, SSW on a farm track to a bridge over the Mill Brook at SU 4972 9342, then W along the S side of the Mill Brook

To Drayton Parish boundary and FP 192/10 at SU 4947 9338.

- The red line indicates the route of the path



Description The first section, across a small field from Mill Lane to the Mill Brook/Ginge Brook, was a well used farm track clearly visible on satellite maps. The path crosses a concrete bridge, over the brook, which has been blocked with rubble and hardcore with barbed wire on the top. The path then follows the brook upstream and generally W along the edge of a larger farm field and is an unmade path linking to Drayton Parish boundary and FP 192/10 part of the OCC Promoted Path, 'Vale Way'.

Function An unmade path linking Mill Lane with Bradfield Court (off Milton High St) and Sutton Road, Milton via BR 373/21.

Comments The actions taken to prevent the use of the path and bridge over the Mill Brook indicate this was a well used path (without permission) until blocked. The path is still clearly visible from satellite photographs. As a link to the 'Vale Way', an OCC Promoted Path, this was a route that could be used by villagers to walk to Milton Park to access facilities there that are not available in the village, e.g. the pharmacy. Kelaart's Field is on this route and is a popular spot for walkers.

Path reference FP 373/15 - Drayton East Way **Designated** Permissive Path

From The Ginge Brook on FP 373/14 (SU 4982 9368) travelling WNW, parallel between Drayton Road and Drayton East Way to the end of the field where it crosses FP 373/15 (SU 4967 9372) a continues WNW on the south side of the drain to the end of the field (SU 4945 9378) then south on the east side of the next field

To Drayton BR 192/1, Drayton east Way (SU 4943 9365)

- The red line indicates the route of the path

Description This well used narrow path runs along the sides of the fields with a drain to the south until it crosses FP 373/15 and continues with the drain to the north and then turns south to connect to Drayton East Way.

Function This path links FP 14 at it's mid point to Drayton East Way (Drayton parish) and then on to the 'Vale Way'.

Comments This is a popular Permissive footpath to the NW of the village creating a circular route. There is currently no signage for this path but the landowner would be happy to have signage showing the path and encouraging people to stick to the Permissive Paths and Rights of Way.



View along the Permissive Path from about halfway along footpath 373/14 on the Ginge Brook, along the hedge between the two fields. The path starts from the stile between the two fields on the Ginge Brook and goes directly west along the south side of the field on the north side of the ditch between the two fields. A post/waymark is required with signs for footpath 373/14 north and South and for the Permissive Path pointing west.



The path starts from the stile between the two fields on the Ginge Brook and goes directly west along the south side of the field.



The stile between the two fields on the Ginge Brook is on FP 373/14, which runs along the Ginge Brook between Brook Street and Mill Lane. The Ginge Brook is just visible through the hedge on the left, east, of the stile.



FP 373/14 continues south over the stile, the Permissive path continues west along the ditch.



This Permissive Path crosses FP 373/15 and this is the view SE, showing FP 15 around the edge of the field to the stile where it crosses the stile.



View back along the path, toward the village, from the point where it crosses FP 373/15.



The path continues west but crosses to the south side of the hedgerow, there is a broken dilapidated stile in the corner of the field. FP 373/15 continues north up to Drayton Road and South to Mill Road and Drayton East Way. Post required with footpath signs for footpath 15 north and south and permissive path signs pointing east and west.



View north, showing the broken stile and FP 373/15, toward Drayton Road.



At the end of the second field the path turns south toward Drayton East Way. This is the view back, east, along the path.



View south from the same point as the above photograph. The path follows the hedgerow until it reaches Drayton East Way.



View back, north, from Drayton East Way on the Drayton Parish Boundary, showing the path along the hedge. Permissive Path sign required here.



View from Drayton East Way, the bridleway along the parish boundary between SC and Drayton. The view is NE, back towards the northern end of the village and shows the route of the path.



View back east along Drayton East Way, towards the village. The Permissive Path starts on the left and goes north.



View west along Drayton East Way, away from the village. The Permissive Path starts on the right and goes north.

Path reference	Culham Reach Thames right bank	Designated	Unregistered path
From	Peep-o-day Lane, 373/18, SU 4939 9505, ESE between two quarry lakes then along the north side of the Wilts & Berks Canal to the River Thames, then NNE		
To	Abingdon parish boundary on South Quay, SU 4989 9556, SE corner of the Abingdon Marina.		



- The red line indicates the route of the path

Description There is a kissing gate on Peep-o-day Lane, just south of the Thames Water Works and a large electricity pylon. Leading to a 1,000m unmade path from Peep-o-day Lane, 373/18, ESE, between two quarry lakes to the west of a stretch of the River Thames (Isis) known as Culham Reach passing a short stretch of canal. Site of the proposed Junction of the Wilts & Berks Canal with the River Thames. NNE upstream along the right bank of the Thames.

Function A walking path affording excellent views across the River Thames at Culham Reach.

Comments At the site of the proposed Junction of the Wilts & Berks Canal with the River Thames there are beautiful views across the Thames where the river divides to Culham Cut going E and the main river continuing S before it also sweeps around to the E. Most days in the Summer boats will be seen negotiating the entry/exit to the canal cut and people will be seen walking the Thames Path on the opposite bank. The path continues NNE upstream along the right bank of the Thames where some exceptional views across this tranquil part of the river can be enjoyed.

Path reference Kingdom of Wessex Trail **Designated** Other

From Sutton Courtenay, 373/12 and 373/31

To Appleford parish boundary, 106/8

The Kingdom of Wessex Trail
 The trail celebrates important Anglo-Saxon (AS) history and landscape in south Oxfordshire. The unmarked route follows existing footpaths. Excavations at Sutton Courtenay have revealed 33 AS buildings, including the largest great hall complex found in Britain. There is also evidence of significant AS occupation in nearby Appleford. A large AS cemetery was discovered in Long Wittenham in the 1860s, featuring more than 100 graves. Legend says that the village cross is where Bishop Birinus was sent by the Pope to restore Christianity to Saxon England in the 7th century. The newly-constructed House of Wessex is in Long Wittenham, and lies at the centre of the trail. In 2016, the remains of a large AS building were discovered on land owned by Sylva Foundation. An animal bone found at the site was dated to AD 679. The building's large size suggest it was no ordinary house. The site was evidently an important settlement for the emerging Kingdom of Wessex. It may even have been a temporary royal residence for Wessex kings touring the region. Near to Little Wittenham is Castle Hill, a Bronze Age hill fort on land owned by the Earth Trust. It provides a wonderful detour, and offers a bird's-eye view of the trail. After crossing the River Thames at Days Lock, the trail finishes at Dorchester-on-Thames, but not before passing alongside the Dyke Hills, built during the Iron Age to protect the village. The site of Dorchester Abbey was founded in 635 AD and is one of England's most important Saxon cathedrals.

Visit sylva.org.uk/wessex
 Download a gps route for the Kingdom of Wessex Trail
 Read more about local Anglo-Saxon history
 Latest news and events

Funding raised by The National Lottery and awarded by the Heritage Lottery Fund

The House of Wessex Project
 With support from the Heritage Lottery Fund, work began in 2018 to reconstruct the House of Wessex with the help of volunteers. The building has been reconstructed on its original footprint, using tools and materials faithful to the 7th century. The timber frame of oak and chestnut was hewn by hand, covered with a thatched roof, and its walls constructed of hazel wattle and daub. A living history society, the Wulfpeodians, will hold public open days on the site to demonstrate how the Anglo-Saxons lived.



SYLVA FOUNDATION
House of Wessex
 Sylva Foundation is an environmental charity helping trees and people grow together.

The Kingdom of Wessex Trail



- The trail follows FP 373/12 and FP 373/31 through Sutton Courtenay
- More information can be found at <https://sylva.org.uk/wessex>

Description See SC 373/12 and 373/31

Function Thought to be an Anglo-Saxon trail between SC Abbey and Dorchester Abbey, now a very pleasant walk from SC through the villages of Appleford, Long Wittenham, to Dorchester-on-Thames with the option to include Clifton Hampden.

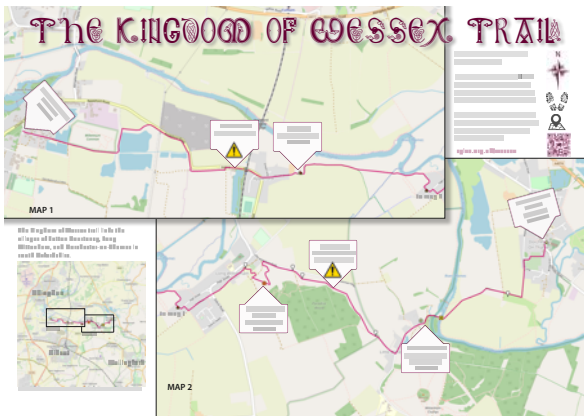
Comments The trail celebrates important Anglo-Saxon (AS) history and landscape in south Oxfordshire. The unmarked route follows existing footpaths. Excavations at Sutton Courtenay have revealed 33 AS buildings, including the largest great hall complex found in Britain. There is also evidence of significant AS occupation in nearby Appleford. A large AS cemetery was discovered in Long Wittenham in the 1860s, featuring more than 100 graves. Legend says that the village cross is where Bishop Birinus was sent by the Pope to restore Christianity to Saxon England in the 7th century.

The newly-constructed House of Wessex is in Long Wittenham, and lies at the centre of the trail. In 2016, the remains of a large AS building were discovered on land owned by Sylva Foundation. An animal bone found at the site was dated to AD 679. The building's large size suggest it was no ordinary house. The site was evidently an important settlement for the emerging Kingdom of Wessex. It may even have been a temporary

royal residence for Wessex kings touring the region.

After crossing the River Thames at Days Lock, the trail finishes at Dorchester-on-Thames, but not before passing alongside the Dyke Hills, built during the Iron Age to protect the village. The site of Dorchester Abbey was founded in 635 AD and is one of England's most important Saxon cathedrals.

More information can be found at <https://sylva.org.uk/wessex>

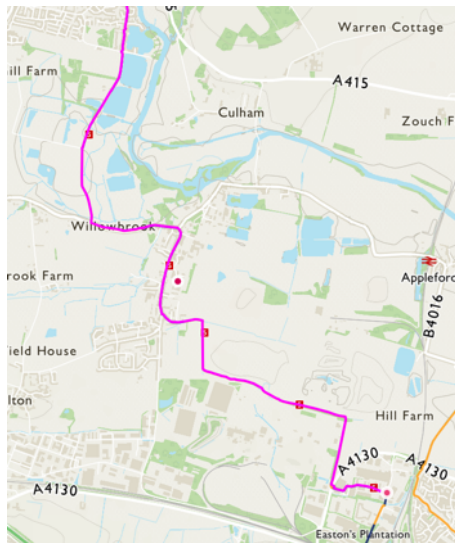


SYLVA Foundation has identified the route between Sutton Courtenay Abbey and Dorchester Abbey as the Kingdom of Wessex Trail

Path reference NCR 5 - Sustrans Hanson Way - SC **Designated** Other

From Peep-o-day Lane Abingdon boundary S to Drayton Road B4016, E along the cycle path, continuing on Brook St (no cycle path) then S on High St to Frilsham St, then E to Hobbyhorse Lane and continuing E to Sustrans cycle track, then S, then E then S

To Didcot Parish Boundary, A4130, Didcot Northern Relief Rd, on the roundabout opposite Hawksworth.



- The path is indicated by the pink line

Description A route through the village using PROW, Highways and Permissive Paths.

Function A cycle path between Abingdon and Didcot via SC. The 21.6km National Cycle Route 5 (NCR 5) passes through SC entering the parish N boundary on Peep-o-day Lane, generally SSE through the centre of the village to the parish boundary with Didcot on the A4130.

Comments Sustrans: HANSON WAY. This route is part of the National Cycle Network, a network of signed paths and routes for walking, cycling and exploring outdoors. Data supplied by Sustrans.

The cycle route uses designated PROW, Highways and Permissive Paths. Some sections are shared use Cycle Track and Pedestrian path. Mostly a safe route through SC apart from the section along Brook St and it's junction with High St. There is no cycle lane on Brook St, B4016, and the traffic along this road can make this route risky, particularly the Brook St/High St, junction.

Path reference 106/03 (Appleford) **Designated** Public Bridleway (BR)

From Appleford Crossing (Railway) SSE through Hill Farm

To Didcot Parish Boundary, A4130, Didcot Northern Relief Rd, on the roundabout opposite Collett, Didcot BR 189/26.



- Appleford's BR 106/03 the green dash line between the two red arrows on the map

Description Mostly single lane, part two lane, 971m, tarmac road. The two lane section is part of the haul road to the landfill, tarmac plant and waste/landfill gas power station.

Function Links Appleford level crossing (railway) with Didcot Northern Perimeter Road, A4130. A direct route from Sutton Courtenay's BOATs 373/9 and 373/10 to Didcot.

Comments The two lane section of this road is the access road to the landfill site and tarmac works. A busy road on weekdays with large vehicles accessing the landfill and other industrial facilities to the west of Appleford. At weekends this is a pleasant part of the route to cycle between SC and Didcot, starting from SC on Old Wallingford Way or Hobbyhorse Lane (both need remedial work).



Bench at Appleford railway crossing, "IN LOVING MEMORY of Lewis 1942 - TBA (Not yet gone nor forgotten)".

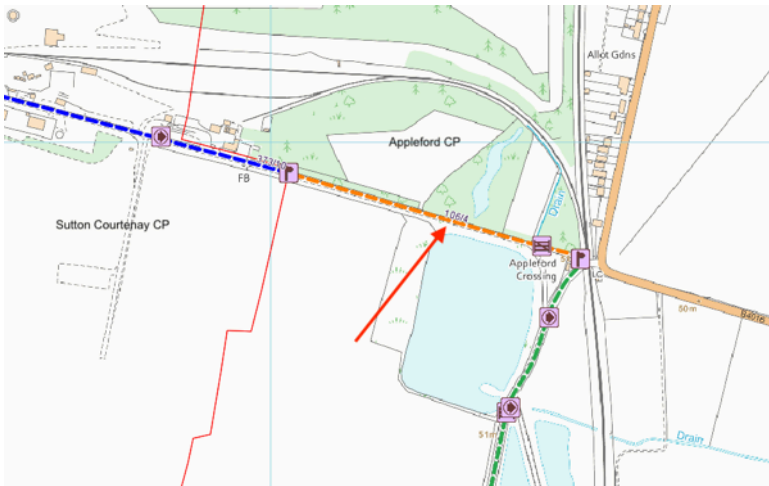


Nothing more to say!

Path reference 106/04 (Appleford) **Designated** Restricted Byway

From Old Wallingford Way parish boundary

To Appleford Crossing (Railway)



- Appleford's BR 106/04 is identified by the ochre dash line identified by the red arrow

Description Although designated a Restricted Byway, this is a, 455m, two lane tarmac continuation of, 373/10, Old Wallingford Way, and the access road to the landfill, recycling centre, and tarmac plant.

Function A continuation of Old Wallingford Way from Sutton Courtenay parish boundary to the level crossing in Appleford on the B4016. Part of an alternate route from SC to Didcot and Wallingford avoiding any main roads in SC.

Comments This path is part of a possible route for a cycle track linking SC with Appleford and on to north Didcot and Wallingford, see comments on BOAT 373/10. At the level crossing the path joins FP 106/8, a Bridleway SSE to Didcot and an alternate to the NCR 5 National Cycle Route path to the BR station in Didcot, avoiding High St, Harwell Road, Sutton Courtenay Lane and the dangerous Milton Road to Didcot. A small amount of repair works to BOAT 373/10, Old Wallingford Way would open this route up. However, it should be noted that on weekdays this route is busy with heavy vehicles and can be very dusty when dry.



View south from the east end of Byway 373/10 where it becomes Appleford's Restricted Byway 106/4



Bench at Appleford railway crossing, "IN LOVING MEMORY of Lewis 1942 - TBA (Not yet gone nor forgotten)".

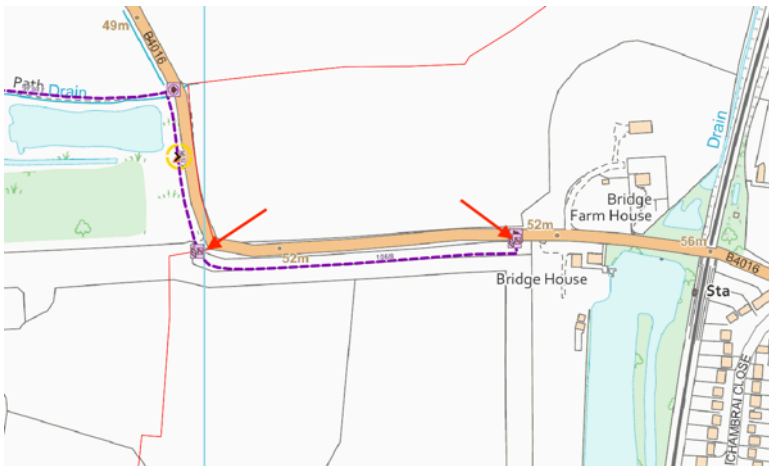


Nothing more to say!

Path reference 106/08 (Appleford) **Designated** Public Footpath (FP)

From S end of FP 373/31, SC/Appleford boundary on Appleford Rd, B4016, E

To Bridge House, Appleford (Appleford Church path) and (The Kingdom of Wessex trail).



- Appleford's FP 106/08 is identified by the mauve dash line between the two red arrows

Description This, 357m, unmade path, allows walkers to continue off road from SC FP 373/31 E along the south side of Appleford Rd, B4016 toward Appleford Station.

Function Part of the pathway from SC to Appleford, also known as the Kingdom of Wessex Trail.

Comments The path, part of the Kingdom of Wessex Trail, is banked up above a ditch to the north, i.e. between the path and Appleford Rd. However it does get overgrown and is a narrow unmade path. A more serious problem is the lack of a path between where this path ends and Appleford Station. Walkers must walk in the road, B4016, up the west ramp of the railway bridge where the walker is out of sight of any vehicles approaching from Appleford. However, once past the railway bridge there is a footpath on the south side, which links to Church St and on to a Thames side path to the east of Appleford, still part of the Kingdom of Wessex Trail and well worth the effort.

During WW1 trains regularly stopped at Appleford to collect the Prime Minister (RH. H.H. Asquith) and ferry him between his home in Sutton Courtenay and London.



Broken kissing gate amongst the nettles at the south end of 373/31. The broken gate and some other discarded debris was removed Autumn 2020, after numerous requests to OCC and the landowner.

The west end of Appleford's FP 106/8 can be seen in the background.



Near the start, west end, of the path, 106/8, showing the waymark on the post.



Overgrowth along this path, especially the brambles, obstruct the path but was eventually cut back after repeated complaints to OCC and the landowner. Many walkers have to cross the wire fence to bypass the obstructions and use the track on the other side of the fence.



Restricted path, often too narrow but with wide better maintained track on the south side of the fence.



Tree across 106/8. Subsequently fallen further and is now blocking the path.



View back, west, along the path, showing the path and track with the fence pulled down in the foreground.



Barbed-wire pulled down by walkers having to cross to the FCC Environment track to pass obstacles.



View from Appleford Rd, B4016, of the Finger Post at the east end of the path 106/8.



View of Appleford sign and finger Post on the B4016 at the east end of the path 106/8.

Path reference 183/02 (Culham) **Designated** Public Footpath (FP)

From Sutton Courtenay Parish boundary, FP 373/1, at Sutton Pools on the River Thames, generally W across the weirs, then NE to the bridge across Culham Cut (River Thames canal) where it then crosses FP 183/11, The Thames Path (OCC Promoted Path) running through Culham parish, N

To The NE wall of Manor Farm and then, N past No. 44 Culham High Street (formally the Lion Inn).



- Culham's FP 183/02 is the shown by the mauve dash line between the two red arrows

Description A 6 feet wide, 903m, unmade path

Function Connects SC, FP 373/1, at Sutton Pools with Culham High St, crossing the part of the Thames Path (OCC Promoted Path) running through Culham parish.

Comments This Culham parish, minimum 1.2m wide, 903m, unmade path is the shortest walking path between SC High St and Abingdon. This path links with SC FP 373/1 and together make one of the nicest paths connecting SC with the Thames, where there are lots of good views along the Thames and of Sutton Pools. Walkers may even be lucky enough to see the canoes challenging the rapids caused by the weir or navigating their way down the slope on the north side of the hydro power station.

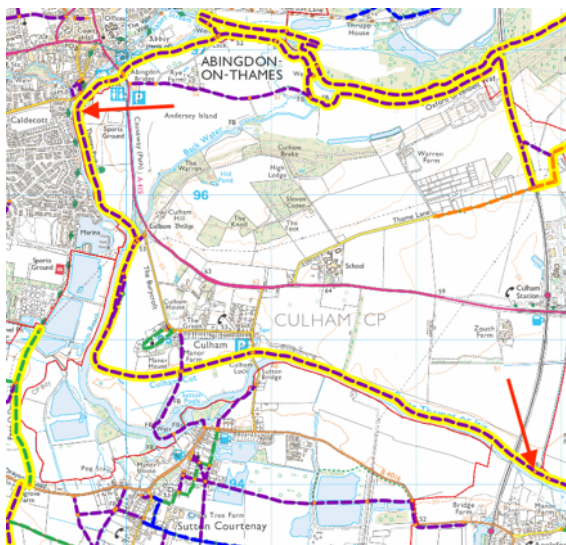
Note. The gates on the diverted route between the properties, 43 and 44 Culham High St, must be freely opening. Maintenance of the path between the houses is at the

landowner's expense.

Path reference 183/11 (Culham) **Designated** Promoted Footpath (PFP)

From Abingdon Parish Boundary on the River Thames, near Abingdon Cricket Ground, west of Abingdon Football Ground, along the left bank of the Thames to Culham Reach, and crossing the river via a footbridge at Culham Reach to FPs 183/12 and 183/13 near Tollgate Cottage (close to the A415, Abingdon Rd), and continuing S following the river, then E along Culham Cut, through Culham Lock, continuing E

To the footbridge at Appleford Parish boundary, E of the railway viaduct on the N side of the river, near the Clifton Hamden/Culham parish boundary.



- Culham's FP 183/11 is the shown by the mauve dash line identified by the two red arrows and is highlighted in yellow as it is the Thames Path an Oxfordshire Promoted Path

Description Part of the Thames Path (OCC Promoted Path) an unmade path running through Culham for 4,180m, including a section of canal, Culham Cut, that means the navigation no longer enters SC parish but does run along the boundary for the majority of this section of the path. This path is within easy walking distance of SC and passes a number of beauty spots on route to Abingdon-on-Thames.

Function Thames Path (OCC Promoted Path) mostly historic tow path.

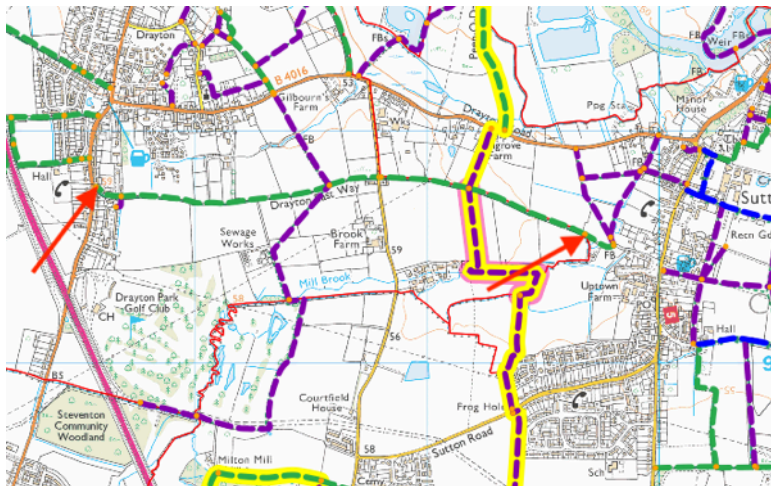
Comments After passing through Abingdon the Thames continues S to the south of Andersey Island, the river from here to Culham Cut is known as Culham Reach and is the boundary with SC. Culham Cut rejoins the river at Sutton Bridge where it once again becomes the boundary with SC until it reaches the SC/Appleford boundary N of Appleford Stn, near the railway bridge over the Thames.

SC could be promoted as a village of significant historical interest, worth a small diversion while walking the Thames path.

Path reference 192/01 (Drayton) **Designated** Public Bridleway (BR)

From Mill Lane SC, FP 373/26

To Drayton, adjacent to property No.41 Steventon Road



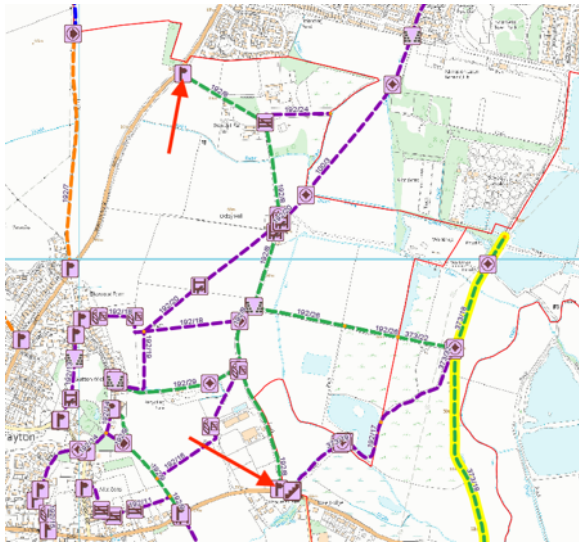
- Drayton's BR 192/1 is identified by the green dash line between the two red arrows on the map

Description Drayton East Way, a, 2,163m, mostly cinder track from Mill Lane SC to Steventon Road, Drayton.

Function A Bridleway between SC and Drayton avoiding the B4016 Drayton Rd.

Comments With a little work this could be a cycle track linking SC with Drayton, avoiding having to use Drayton Rd, B4016 and Brook St, SC. The path also crosses the 'Vale Way' (OCC Promoted Path) on the Drayton SC boundary. This point on the Vale Way is the junction between SC FP 373/17 and Drayton FP 192/10.

The Drayton SC boundary is on the N side of the path from the end of Mill Lane to the point it crosses Milton Rd at Windyridge Court.

Path reference 192/08 (Drayton)**Designated** Public Bridleway (BR)**From** Drayton Road, B4016, at Gilbourne's Corner, NNW to 192/26 then generally N on Gypsy Lane now known as Stonehill Lane to Stonehill Farm, S of Stonehill House, then NW**To** Oxford/Newbury Road, B4017.

- Drayton's BR 192/8 is identified by the green dash line between the two red arrows on the map

Description From Drayton Road, B4016, at Gilbourne's Corner, to 192/26, corner on Stonehill Lane this is an unmade farm track. From 192/26 the Bridleway is a two lane metalled (concrete) quarry haul road. The quarry is a working quarry and the path is dusty when dry and muddy when wet.

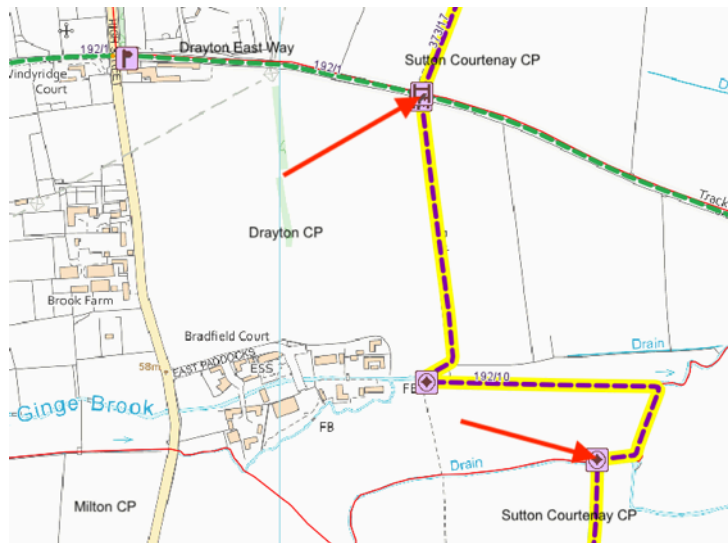
Function This Bridleway links Drayton Rd, B4016, on the SC parish boundary to Drayton Rd, B4017 near the Abingdon parish boundary.

Comments Part of BR 192/8 is also a quarry road used by heavy quarry vehicles, it is dusty when dry and muddy when wet, some effort is made to clear it by the quarry company. The proximity of large quarry vehicles with walkers and cyclists is less than ideal.

Path reference 192/10 (Drayton) **Designated** Promoted Footpath (PFP)

From Drayton East Way, 192/1 jnc SC FP 373/17 on the Parish Boundary S to Mill Brook/ Ginge Brook over the footbridge (FB) then E along the Brook to the Parish Boundary then SW along the Parish Boundary

To SC FP 373/21



- Drayton's FP 192/10 is identified by the mauve dash line between the two red arrows on the map
- The path is part of the Vale Way, highlighted in yellow as it is an Oxfordshire Promoted Path
- The thin red lines are the parish boundaries, Drayton W and Milton SW

Description Part of the 'Vale Way' (OCC Promoted Path). An 815m unmade path N/S across farm fields to the north of the Ginge Brook then, after crossing a small wooden bridge S over the Brook, around the perimeter of a farmed field, east along the north side then south along the east side.

Function Part of the 'Vale Way' linking Abingdon with Milton via Sutton Courtenay.

Comments This is an OCC Promoted Path, 'Vale Way', and is picturesque path through the Vale and along the Ginge Brook, although, due to lack of maintenance, views of the Brook are limited. The path can be muddy in winter or after heavy rain and has been known to flood.

Path reference 192/17 (Drayton)**Designated** Public Footpath (FP)**From** Sutton Courtenay Parish boundary FP 373/19 (Gilbourn Path) NE around a small lake**To** Sutton Courtenay Parish boundary FP 373/32

- Drayton's FP 192/17 is the shown by the mauve dash line between the two red arrows

Description This section of Gilbourne Path connects the two sections in Sutton Courtenay Parish, FP 373/19 and FP 373/32. It passes around the south and east sides of the small lake created by past quarrying and is now a picturesque nature reserve.

Function The Gilbourne Path connects Gilbourn Farm on Drayton Road, B4016, to Peep-o-day Lane via this section of path in Drayton Parish, FP 192/17 and is an alternate route between Drayton and South Abingdon.

Comments The 1804 Enclosure Map and an earlier version of the DMS identifies footpaths 373/19, 192/17 and 373/32 (formally No. 20) as 'Gilbourne Path'. Prior to the quarrying activity, which created the lake, the path went straight across the field.



View back across the field, from the bridge over the ditch.



The bridge from the Drayton side. Note the missing plank, reported to OCC but no action taken.



View of the lake on the Drayton side of the parish boundary.



This view from the south side of the lake shows a path continuing east toward Peep-o-day Lane. Despite repeated repairs to the post and barbed wire fence the path continues to be used, possibly a short cut from Sutton Courtenay to the lakes. The 1804 Enclosure Map shows there used to be a road on the Sutton Courtenay side going directly west from Peep-o-day Lane and stopping just short of the south east corner of the lake. However, it is more likely the shortcut follows the farm track on the north side of the Willow Brook.



View of the lake in Drayton Parish, footpath 192/17 and between Sutton Courtenay footpaths 373/19 and 373/32.

Path reference 192/26 (Drayton)**Designated** Public Bridleway (BR)**From** Sutton Courtenay Parish boundary, BR 373/22, connecting with Peep-o-day Lane, BR 373/18**To** BR 192/8 near junction with FP 192/18, Oday Hill.

- Drayton's BR 192/26 is identified by the green dash line between the two red arrows on the map

Description Although designated as a Bridleway it is a two lane metalled (concrete) quarry road. This section is between Peep-o-day Lane and the N/S section of Stonehill Lane, Drayton BR 192/8.

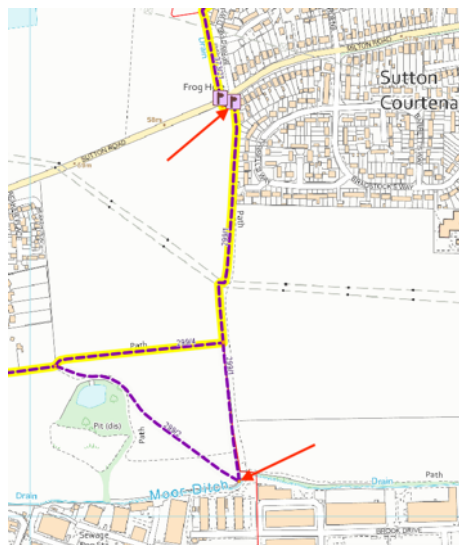
Function Continuation of BR 373/22 from Peep-o-day Lane W to the N/S section of Stonehill Lane, Drayton BR 192/8.

Comments This Bridleway is also a quarry road used by heavy quarry vehicles, it is dusty when dry and muddy when wet, some effort is made to clear it by the quarry company. The proximity of large quarry vehicles with walkers and cyclists is less than ideal.

Path reference 299/01 (Milton) **Designated** Promoted Footpath (PFP)

From Milton Rd, SC, South along the east boundary of Milton parish (west boundary of Kelaart's Field and SC parish boundary)

To Moor Ditch (Maynes Bridge), Milton Park.



- Milton's FP 299/1 is identified by the mauve dash line between the two red arrows on the map
- Some of the path is part of the Vale Way, highlighted in yellow, an Oxfordshire Promoted Path
- The thin red line, partially obscured by the path line, is the Drayton/ Sutton Courtenay parish boundary
- Although the path is in Milton parish the highlighted section, i.e. Vale Way, is within the Sutton Courtenay Neighbourhood Plan Boundary

Description Vale Way (OCC 'Promoted Path') - Disused, unmetalled, 6ft, 764m, footpath. Planning permission has been granted to construct a cycle path alongside this path on the east side of the parish boundary in SC, replacing the existing Permissive Path.

Function Vale Way (OCC 'Promoted Path') - Links with FP 373/21 at the junction of Sutton Road (W) and Milton Road (E) it runs N/S along outside the boundary of SC Parish to Milton Park, within Milton parish (near the west end of Brook Drive). The Vale Way (OCC 'Promoted Path') section is S to Milton FP 299/4 also designated as 'Vale Way'.

Comments Only the north section of this path behind the houses on Tyrell's Way remains and this section has been upgraded to a shared use pedestrian/cycle track. The remainder of the public right of way is along the fields on the righthand side of the hedgerow, in Milton Parish. The path has been ploughed in and not reinstated but there is a permissive path on the east side of the hedgerow in SC Parish, on Kelaart's Field.

Although the path is in Milton parish the highlighted section, i.e. Vale Way, is within the Sutton Courtenay Neighbourhood Plan Boundary .

The shared use cycle/pedestrian path is on the SC side of the parish boundary, i.e. on Kelaart's Field's west boundary opened in 2021. This current Permissive Path provides well used access, for walkers and cyclists from Sutton Courtenay to Milton Park for work and to the amenities in Milton Park, including a pharmacy (Apollo) which is the nearest pharmacy to the village.

This path exists on the 1956 Definitive Map but is shown going further north and crossing Sutton Courtenay Rd further west and continuing N to the SC parish boundary just south of Drayton Mill.



Milton's FP 299/1 and the shared use Cycle Track starts from the end of Milton Road and goes south to Milton Park, past the back of the houses on Tyrrell's Way; some have gates on to this path. This view shows the new signage and pavement crossover, installed January 2021.



View of Milton's FP 299/1 and the shared use Cycle Track, starting from the end of Milton Road before the new signage and pavement crossover was installed, January 2021. Note the finger post identifying this Public Right of Way.



The path was due to open Nov 2020 but opened in Jan 2021. The path is a Public Right of Way (Milton's 299/1) and was never officially closed.



View north, along the last section of the Cycle Track to be completed, behind the housing on Tyrrell's Way, between Milton Road and Kelaart's Field. This section is over the route of Milton's FP 299/1 a Public Right of Way and not part of the Permissive Path over Kelaart's Field.



Many of the houses have gates out onto the Public Rights of Way and other paths on Kelaart's Field.



View of the well used unofficial access point between Tyrrell's Way and Milton's FP 299/1 and new Cycle Track (2021).



View north along Milton's FP 299/1, Toward Milton Road, Sutton Courtenay, with the unofficial access to Tyrrell's Way on the right.



View south, near the unofficial access to Tyrrell's Way, along Milton's FP 299/1, toward Milton Park. The path deviates from the Public Right of Way and crosses into Kelaart's Field, Sutton Courtenay Parish. The Public Right of Way, FP 299/1, continues south on the Milton, west, side of the boundary hedge but has been ploughed in so that only the Permissive Path remains.



View north, from the Milton's FP 299/4, on the parish boundary along the route of Milton's FP 299/1, now a disused Public Right of Way since the opening of the Permissive Path, Cycle Track on Kelaart's Field in Sutton Courtenay Parish.



View south, on FP 299/1, toward the junction with Milton's FP 299/4, now a disused Public Right of Way since the opening of the Permissive Path and now Cycle Track, on Kelaart's Field in Sutton Courtenay Parish.



View west on the junction between the Cycle Track on Kelaart's Field and Milton's FP 299/4. Milton's FP 299/1 crosses just the other side of the post along the edge of the field in Milton Parish. 299/4 is part of the Vale Way and OCC Promoted Path.



View back north along the new shared use Permissive Path Cycle Track over Moor Ditch from Milton Park, also used to connect to Milton's FP 299/1.



View north, of the old bridge over Moor Ditch, prior to its demolition 2020. This bridge was used in lieu of the older Moor Ditch bridge at the end of Milton's FP 299/1 and FP 299/2.



View south, of the old bridge over Moor Ditch, prior to its demolition 2020. This bridge is used in lieu of the older Moor Ditch bridge at the end of Milton's FP 299/1 and FP 299/2.



New bridge over Moor Ditch under construction 2020. The bridge is used for Milton's FP 299/1, FP 299/2 and the shared use Cycle Track, from the end of Milton Road in Sutton Courtenay and goes across the westside of Kelaart's Field, in the Parish of Sutton Courtenay.



New bridge over Moor Ditch completed 2020/2021. The bridge connects MEPC's Milton Park with the shared use Cycle Track and Milton's FP 299/1 and FP 299/2. Note the Permissive Path signs, making it clear that this is not the Public Right of Way, the Public Right of Way is on the east side of the hedgerow, in Milton Parish.

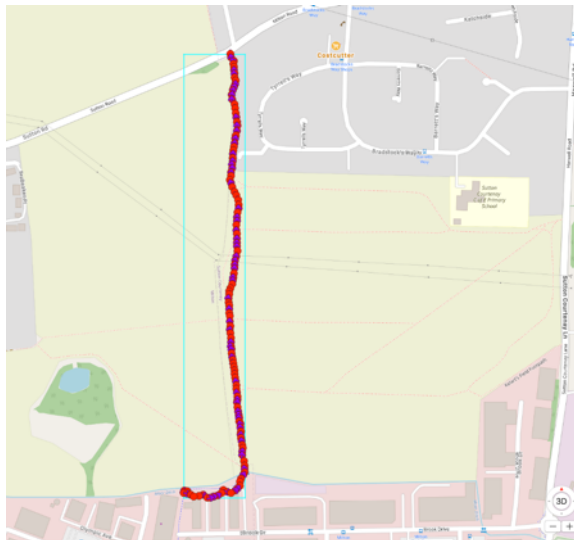


View north along FP 299/1 from Moor Ditch, where there used to be a bridge. This is also the south east end of Milton's FP 299/2, which crosses the field diagonally, NW toward Milton Village. Note both paths have been ploughed in. There is a permissive path on the other side of the hedgerow, on the right, in Sutton Courtenay Parish.

Path reference Milton Rd - Milton Pk CT **Designated** Cycle Track

From South along the west boundary of Kelaart's Field.

To Moor Ditch on the parish boundary.



- This section of the 'Hanson Way' mixed use Cycle Track is identified by the red/mauve line
- Some of the path is part of the Vale Way, an Oxfordshire Promoted Path
- The path/track runs along and crosses the Drayton, Sutton Courtenay, parish boundary

Description A 3m wide, 'Flexipave', shared use Cycle Track and Footpath parallel and c10m east of 299/1 but mostly in SC parish and currently marked as a 'Permissive Path'.

Function Links FP 21 (373/21) at the junction of Sutton Road (W) and Milton Road (E) to Milton Park (near the west end of Brook Drive). The shared use 'Permissive Path' continues SW through Milton Park. This path provides well used access, for walkers and cyclists from Sutton Courtenay to Milton Park for work and to the amenities in Milton Park, including the pharmacy (Apollo) which is the nearest pharmacy to the village.

Comments The shared use, partly permissive, path runs S along the boundary of SC Parish to Moor Ditch, north boundary of Milton Park (near the west end of Brook Drive). It is parallel with and c10m east of Milton's FP 299/1, to Moor Ditch where a shared use path continues SW through Milton Park to Backhill Lane tunnel (under the railway).

This path provides access, for cyclists from Sutton Courtenay to Milton Park for work and to the other amenities on Milton Park, including the pharmacy (Apollo) which is the

nearest pharmacy to the village.

This 700m long x 3m wide, combined cycle and pedestrian route is part of the Science Vale Cycle Network project (Abingdon to Milton Park). This section Route 3 (D) Sutton Courtenay to Milton Park was constructed 2020/2021.

It is not clear why this mostly 'Permissive Path' has been constructed parallel and very close to an existing PROW (Milton's 299/1) but on the other side of the parish boundary. Will this replace Milton's 299/1 and will it be a PROW?



Milton's FP 299/1 and the shared use Cycle Track starts from the end of Milton Road and goes south to Milton Park, past the back of the houses on Tyrrell's Way; some have gates on to this path. This view shows the new signage and pavement crossover, installed January 2021.



View of Milton's FP 299/1 and the shared use Cycle Track, starting from the end of Milton Road before the new signage and pavement crossover was installed, January 2021. Note the finger post identifying this Public Right of Way.



The path was due to open Nov 2020 but opened in Jan 2021. The path is a Public Right of Way (Milton's 299/1) and was never officially closed.



View north, along the last section of the Cycle Track to be completed, behind the housing on Tyrrell's Way, between Milton Road and Kelaart's Field. This section is over the route of Milton's FP 299/1 a Public Right of Way and not part of the Permissive Path over Kelaart's Field.



Many of the houses have gates out onto the Public Rights of Way and other paths on Kelaart's Field.



View of the well used unofficial access point between Tyrrell's Way and Milton's FP 299/1 and new Cycle Track (2021).



View north along Milton's FP 299/1, Toward Milton Road, Sutton Courtenay, with the unofficial access to Tyrrell's Way on the right.



View south, near the unofficial access to Tyrrell's Way, along Milton's FP 299/1, toward Milton Park. The path deviates from the Public Right of Way and crosses into Kelaart's Field, Sutton Courtenay Parish. The Public Right of Way, FP 299/1, continues south on the Milton, west, side of the boundary hedge but has been ploughed in so that only the Permissive Path remains.



View south east, showing the Permissive Path sign on the north west corner of Kelaart's Field.



View south along the Permissive Path Cycle Track over Kelaart's Field in Sutton Courtenay Parish. The official Right of Way, Milton's FP 299/1 is on the other side of the fence/hedge on the right, west.



View back north along the Permissive Path, Cycle Track, from Kelaart's Field in Sutton Courtenay Parish to the point where it crosses the parish boundary on to the official Right of Way, Milton's FP 299/1. The houses are in Tyrrell's Way, Sutton Courtenay.



View north along the Permissive Path, Cycle Track on Kelaart's Field in Sutton Courtenay Parish, from the Milton's FP 299/4 on the parish boundary.



View north, from the Milton's FP 299/4, on the parish boundary along the route of Milton's FP 299/1, now a disused Public Right of Way since the opening of the Permissive Path, Cycle Track on Kelaart's Field in Sutton Courtenay Parish.



View south, on FP 299/1, toward the junction with Milton's FP 299/4, now a disused Public Right of Way since the opening of the Permissive Path and now Cycle Track, on Kelaart's Field in Sutton Courtenay Parish.



View south, of the junction on the Cycle Trace with Milton's FP 299/4. Possibly a consideration for future upgrade to Milton 299/4 to a Cycle Track continuing across Kelaart's Field to Harwell Road.



View south of the junction between the Cycle Track on Kelaart's Field and Milton's FP 299/4. 299/4 is part of the Vale Way and OCC Promoted Path. Note the waymark to the right of the picture, this is on FP 299/1 at it's junction with FP 299/4 two of the Public Rights of Way in Milton Parish.



View west on the junction between the Cycle Track on Kelaart's Field and Milton's FP 299/4. Milton's FP 299/1 crosses just the other side of the post along the edge of the field in Milton Parish. 299/4 is part of the Vale Way and OCC Promoted Path.



The view north from Moor Ditch, north over Kelaart's Field, before the Cycle Track, Permissive Path, was constructed, 2020.



The view south toward Moor Ditch, from the south west corner of Kelaart's Field, before the Cycle Track (Permissive Path) was constructed, 2020. Note the sign for another Permissive Path going east along the newly fenced of south boundary of Kelaart's field.



View back north along the new shared use Permissive Path Cycle Track over Moor Ditch from Milton Park, also used to connect to Milton's FP 299/1.



View north, of the old bridge over Moor Ditch, prior to its demolition 2020. This bridge was used in lieu of the older Moor Ditch bridge at the end of Milton's FP 299/1 and FP 299/2.



View south, of the old bridge over Moor Ditch, prior to its demolition 2020. This bridge is used in lieu of the older Moor Ditch bridge at the end of Milton's FP 299/1 and FP 299/2.



New bridge over Moor Ditch under construction 2020. The bridge is used for Milton's FP 299/1, FP 299/2 and the shared use Cycle Track, from the end of Milton Road in Sutton Courtenay and goes across the westside of Kelaart's Field, in the Parish of Sutton Courtenay.



New bridge over Moor Ditch completed 2020/2021. The bridge connects MEPC's Milton Park with the shared use Cycle Track and Milton's FP 299/1 and FP 299/2. Note the Permissive Path signs, making it clear that this is not the Public Right of Way, the Public Right of Way is on the east side of the hedgerow, in Milton Parish.

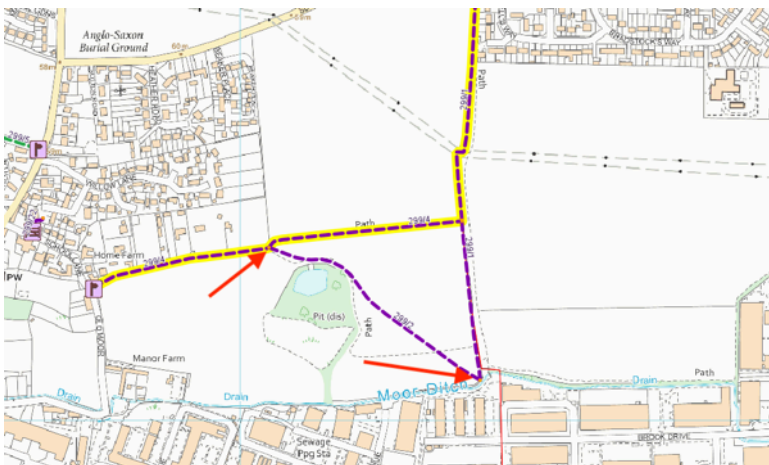


View north east, of the Bridge over Moor Ditch from Milton Park showing the path lighting and signage for paths and flora and fauna in the area.

Path reference 299/02 (Milton) **Designated** Public Footpath (FP)

From Moor Ditch (Milton/SC parish boundary) SW corner of Kelaart's Field,

To Milton FP 299/4, SE corner of Milton Village.



- Milton's FP 299/2 is identified by the mauve dash line between the two red arrows on the map
- The thin red line, partially obscured by the path line for FP 299/1, N/S, is the Drayton, Sutton Courtenay parish boundary

Description This, 425m, unmade path crosses a farmed field around a disused pit, now a fishing pool. This Public Right Of Way has been ploughed over and is unusable as a public footpath.

Function Connects the Moor Ditch crossing with the Village of Milton, providing access for Milton Park employees from Milton Village and a path between Milton Village and Didcot.

Comments The path is disused and no longer visible, having been ploughed over. At the south end the path used to meet FP 299/1, also disused, where there was a Public Right Of Way bridge over Moor Ditch. The bridge has long since been removed, leaving just the permissive path bridge owned by Milton Park (MEPC). Note, the Ordinance Survey paths, shown by the grey dash lines are also disused, however the pool is still used for fishing so people do cross this field to get to it.



View north, of the old bridge over Moor Ditch, prior to its demolition 2020. This bridge was used in lieu of the older Moor Ditch bridge at the end of Milton's FP 299/1 and FP 299/2.



View south, of the old bridge over Moor Ditch, prior to its demolition 2020. This bridge is used in lieu of the older Moor Ditch bridge at the end of Milton's FP 299/1 and FP 299/2.



New bridge over Moor Ditch under construction 2020. The bridge is used for Milton's FP 299/1, FP 299/2 and the shared use Cycle Track, from the end of Milton Road in Sutton Courtenay and goes across the westside of Kelaart's Field, in the Parish of Sutton Courtenay.



New bridge over Moor Ditch completed 2020/2021. The bridge connects MEPC's Milton Park with the shared use Cycle Track and Milton's FP 299/1 and FP 299/2.

Note the Permissive Path signs, making it clear that this is not the Public Right of Way, the Public Right of Way is on the east side of the hedgerow, in Milton Parish.

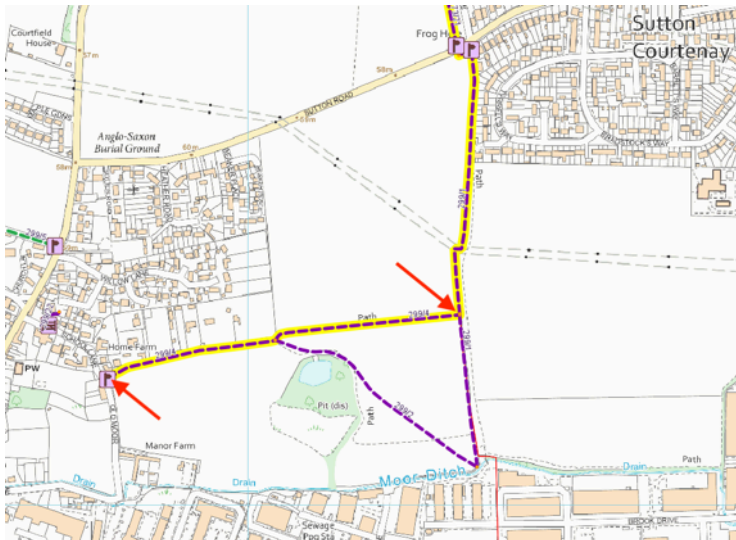


View north along FP 299/1 from Moor Ditch, where there used to be a bridge. This is also the south east end of Milton's FP 299/2, which crosses the field diagonally, NW toward Milton Village. Note both paths have been ploughed in. There is a permissive path on the other side of the hedgerow, on the right, in Sutton Courtenay Parish.

Path reference 299/04 (Milton) **Designated** Promoted Footpath (PFP)

From S end of School Lane, Milton, E

To Milton FP 299/1, SC parish boundary.



- Milton's FP 299/4 is identified by the mauve dash line between the two red arrows on the map
- The path is part of the Vale Way, highlighted in yellow, an Oxfordshire Promoted Path
- The thin red line, partially obscured by the path line for FP 299/1, N/S, is the Drayton/Sutton Courtenay parish boundary
- Although the path is in Milton parish the 327m section (Milton FP 299/4/20) between Milton FP 299/2 and Milton FP 299/1 is within the Sutton Courtenay Neighbourhood Plan Boundary

Description An unmade path linking Milton with SC

Function Linking Milton with SC

Comments Although the registered PROW stops at Milton FP 299/1 the path continues across Kelaart's Field as an unregistered path to another unregistered path that crosses Kelaart's Field diagonally from the SW corner to the NE corner. Regularly used for walking, between SC and Milton.

Although the path is in Milton parish the 327m section between Milton FP 299/2 and Milton FP 299/1 is within the Sutton Courtenay Neighbourhood Plan Boundary.



View north along the Permissive Path, Cycle Track on Kelaart's Field in Sutton Courtenay Parish, from the Milton's FP 299/4 on the parish boundary.



View north, from the Milton's FP 299/4, on the parish boundary along the route of Milton's FP 299/1, now a disused Public Right of Way since the opening of the Permissive Path, Cycle Track on Kelaart's Field in Sutton Courtenay Parish.



View south, on FP 299/1, toward the junction with Milton's FP 299/4, now a disused Public Right of Way since the opening of the Permissive Path and now Cycle Track, on Kelaart's Field in Sutton Courtenay Parish.

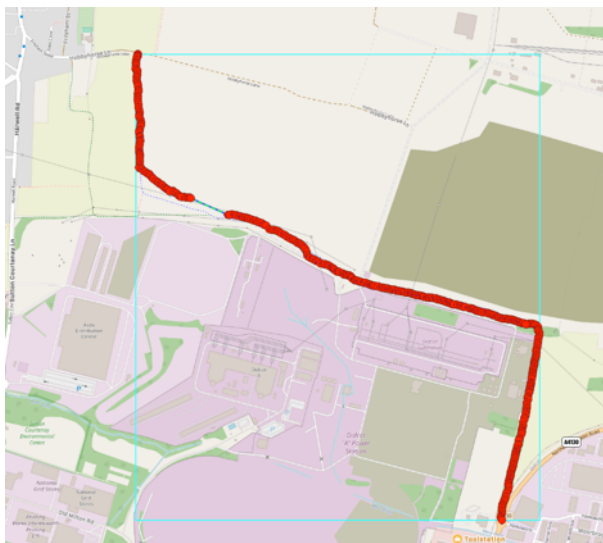


View west on the junction between the Cycle Track on Kelaart's Field and Milton's FP 299/4. Milton's FP 299/1 crosses just the other side of the post along the edge of the field in Milton Parish. 299/4 is part of the Vale Way and OCC Promoted Path.

Path reference Hanson Way - Sustrans **Designated** Cycle Track

From Hobbyhorse Lane, 373/9, SU 5039 9309 S, ESE, SSW

To Didcot Parish boundary at Moor Ditch, on the W side of the Didcot Northern Perimeter Road, at its junction with Didcot BR 189/27 (The Oxfordshire District Boundary).



- This section of the 'Hanson Way' mixed use Cycle Track is identified by the red line
- The path/track runs along side two of Sutton Courtenay's PROW, FP 373/7 and BR 373/24

Description A mostly Permissive, tarmac, c2m, shared use Walking/Cycle Track

Function A shared use track joining SC with Didcot via Frilsham St and Hobbyhorse Lane.

Comments A largely 'Permissive Path' following the routes of FP 373/7/50, BR 373/24/30 & 40, resulting in these paths being low priority for maintenance and most of BR 373/24 falling into disuse. The track is managed by Sustrans under an arrangement with the landowner. The details of the arrangement are not known. As a Permissive Path the land owner has complete control over its use and could close it at anytime without need to apply for permission; there maybe safeguards in the arrangement with Sustrans to prevent this.

Path reference Walk 01 **Designated** Walk

From High St, north end of Church St or Appleford Rd by the Fish.

To Around Sutton Courtenay taking in part of the Thames Path along Culham Cut.



Description A pleasant, easy, 5.5 mile (8.7km) walk around Sutton Courtenay, taking in a section of the Thames Path, fishing lakes and pools, historical buildings and tranquil country side around this historic village.

Function A pleasant, easy, 5.5 mile (8.7km) walk around Sutton Courtenay.

Comments This walk passes many of the historic buildings, and three remaining pubs/restaurants, in the village. On Sundays, in the summer, afternoon tea is served in the River Room at the Norman, 12th-century, All Saints' parish church, which can be found on, the east side of, the Village Green, the centre of the village for over a thousand years. The graves of Herbert Asquith (the last Liberal Prime Minister) and Eric Blair (George Orwell) can be found in the graveyard.

The original River Thames navigation passed through Sutton Courtenay, where it is joined by the River Ginge. Twelfth Century Domesday records show a mill on the

Thames here. This required the construction of the 3m high causeway above Sutton Pools, which is still part of the weir construction today. Toward the end of the 17th Century the Bank of England commissioned the Sutton Courtenay Paper Mill to produce special paper for bank notes that would be more difficult to forge. The Paper Mill exploded, around 1880, but the Mill House remains, one of many important listed buildings in the village.

River boats were charged a toll by the miller, reported to be the highest toll on the Thames. The high toll and the fact that the lock was difficult to navigate, together with the owners refusal to share any of the income with the nearby village of Culham (most of the river is in Culham Parish but the lock is not) resulted the construction of Culham Cut in 1809. As a result Sutton Courtenay became isolated from the main navigation and lost all of the income it had previously enjoyed.



Starting from the High St at Doctors Lane, FP 8, between 53 and 55 High St, head East.

Continue past the houses to the open country side and to the far end of the copse on the left. At the South East corner of the copse there is a path leading North through the trees. Follow this path to the South West corner of the Recreation ground.